

16 EXECUTIVE DRIVE
FAIRVIEW HEIGHTS, IL 62208



PROPERTY HIGHLIGHTS

- ▶ Space available in a three-story Class A office building
 - Suite 200: 3,477 SF
 - Suite 210: 2,489 SF
 - Suite 300: 4,732 SF

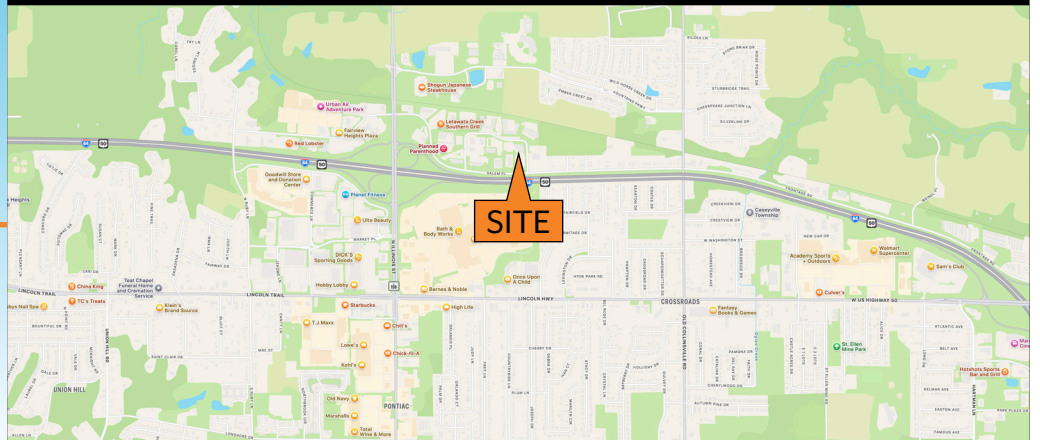
combine for 5,966 SF
- ▶ Monument signage available
- ▶ Immediate access to I-64 and Route 159
- ▶ Ideally located with dozens of restaurants and services within the immediate area
- ▶ **Lease Rate: \$24.50/sf FS**

Contact Information

Mike Hurley
(314) 646-3300
mhurley@cozadgroup.com



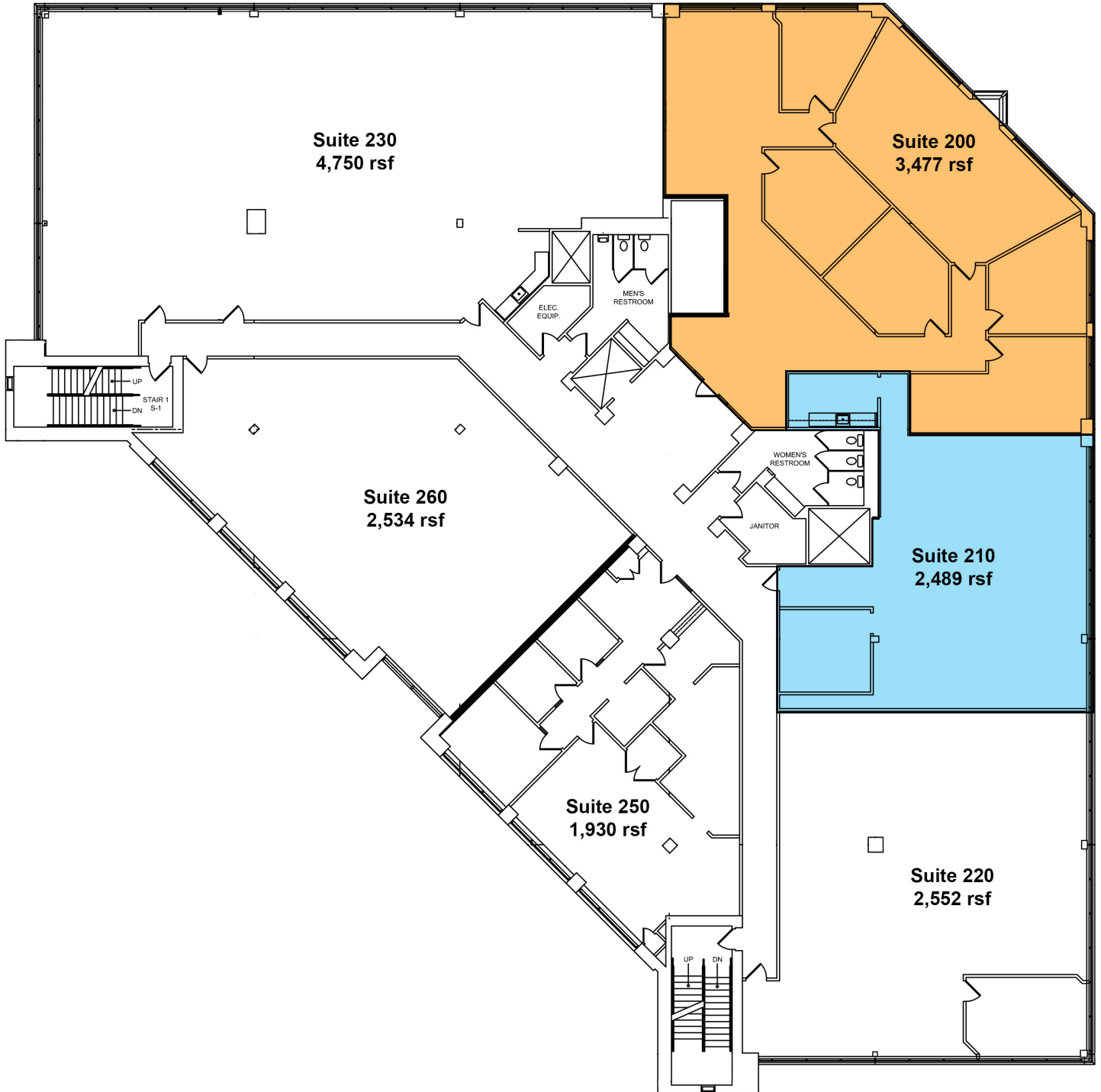
Cozad Commercial Real Estate
MD Real Estate Advisors, LLC
16 Sunnen Drive, Ste. 164
St. Louis, Missouri 63143



16 EXECUTIVE DRIVE

FAIRVIEW HEIGHTS, IL 62208

2nd Floor

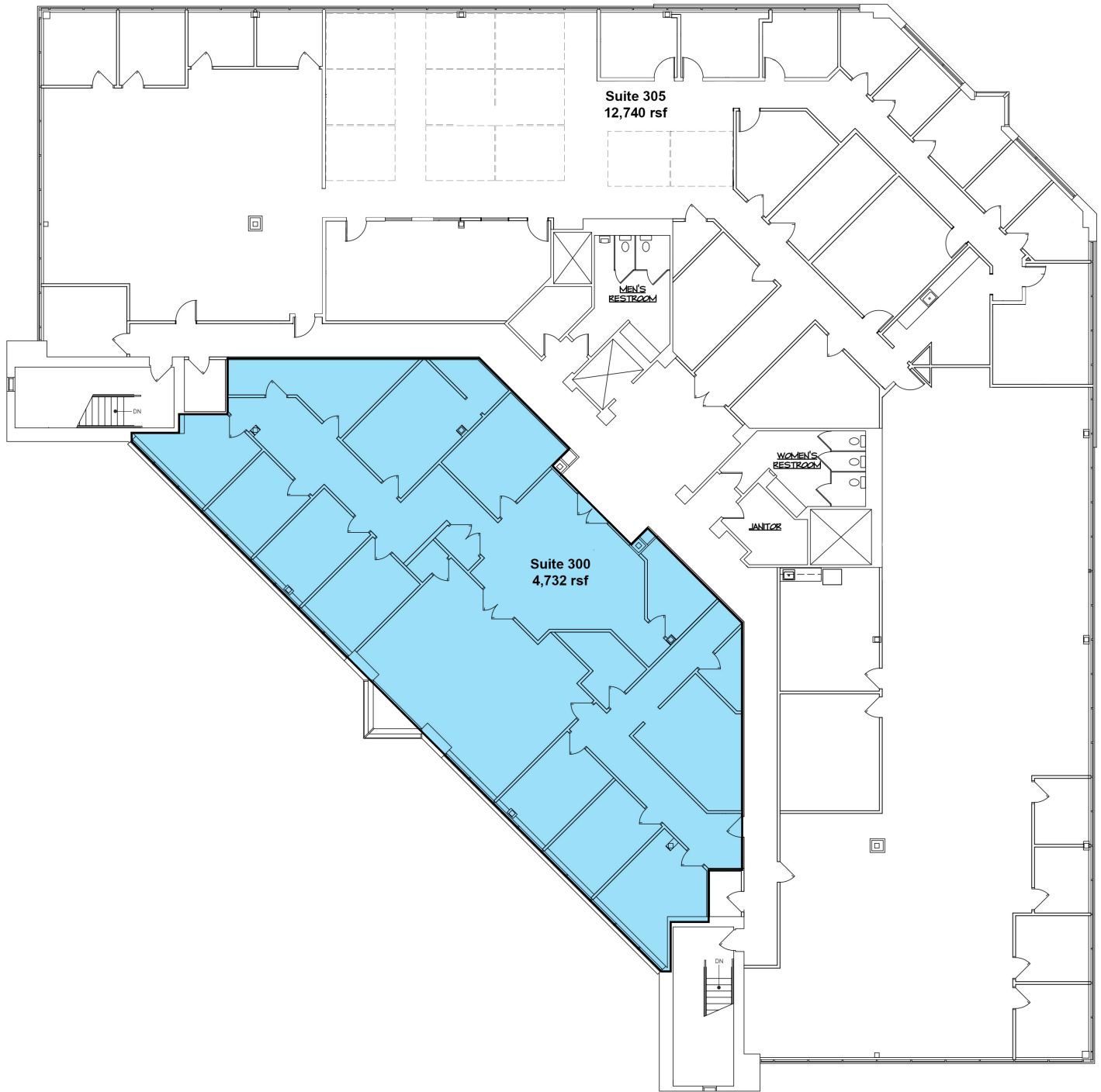


Combine Suites 200 and 210 for 5,966 SF

16 EXECUTIVE DRIVE

FAIRVIEW HEIGHTS, IL 62208

3rd Floor



Information herein has been obtained from the owner of the property or from other sources. The brokers do not guarantee the accuracy of this information. Sellers and brokers make no representation as to the environmental or other conditions of the property and that purchaser investigate fully.

COZAD COMMERCIAL REAL ESTATE
MD REAL ESTATE ADVISORS
A subsidiary of Cozad Commercial Real Estate, Ltd.
16 Sunnen Dr., Ste. 164 • St. Louis, MO 63143