

# Corporate Center II

Suite 350 - 10,137 RSF

4211 W. Boy Scout Boulevard  
Tampa, FL 33607  
[www.cbre.com](http://www.cbre.com)

Plug & Play Sublease Available!



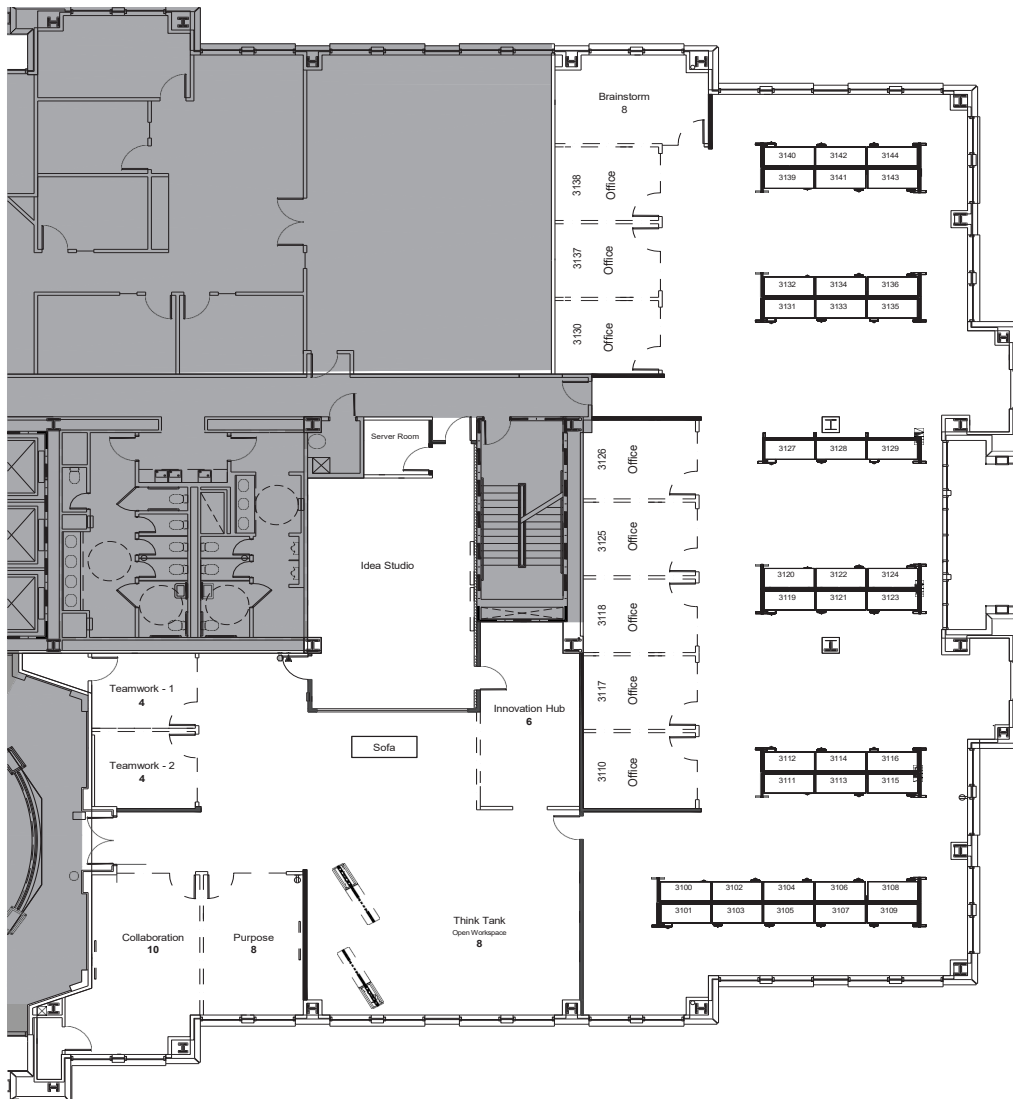
## Corporate Center II

4211 W. Boy Scout Boulevard | Tampa, FL 33607

# Building Overview

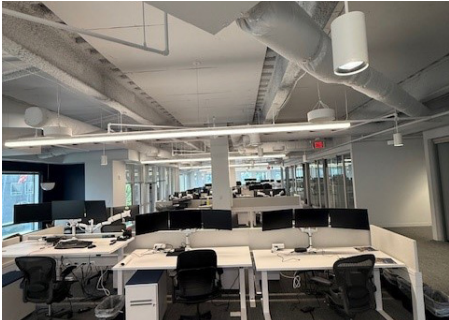
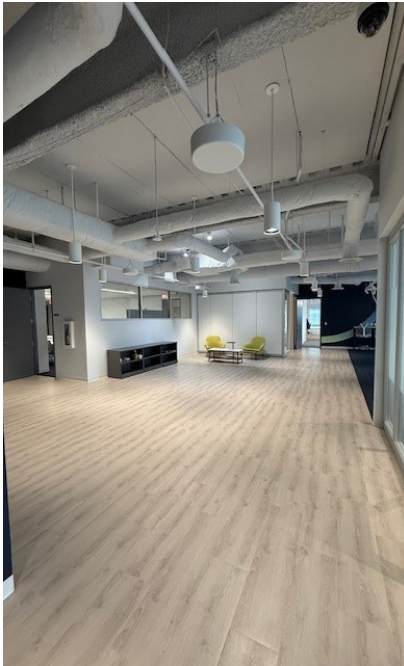
Nestled in the vibrant submarket of Westshore, Corporate Center II truly has it all! This contemporary Class A office space is situated in the vibrant Westshore Business District, close to Tampa International Airport. Constructed in 2001, it covers around 292,000 square feet and features upscale amenities, LEED Gold certification, and plenty of parking. Its strategic location ensures convenient access to major highways, downtown Tampa, and a variety of retail and dining choices, establishing it as a highly desirable location for businesses.

## Suite 350 -10,137 RSF



**Sublease Highlights**

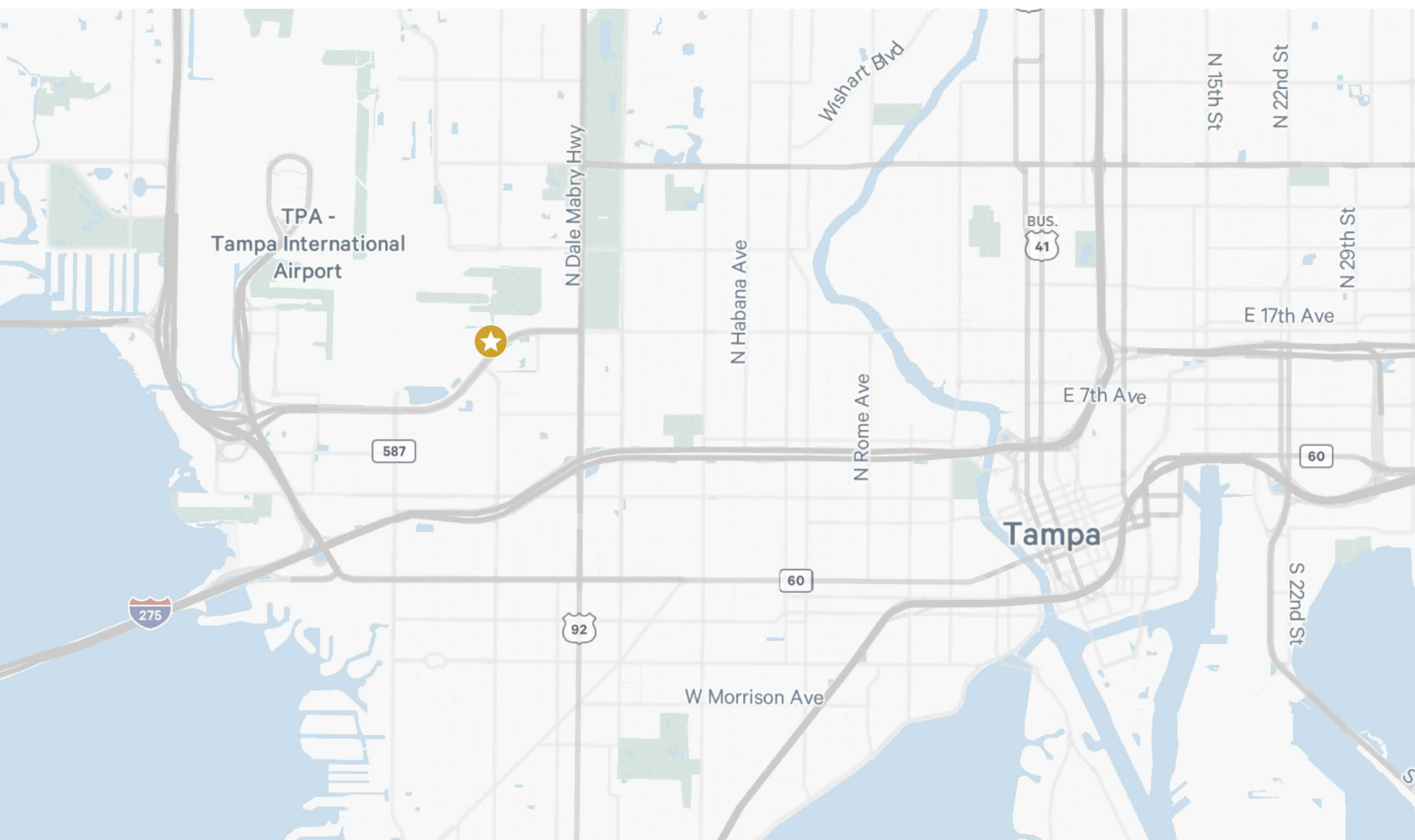
- 10,137 RSF
- Lease Expiration 8/31/2030
- Plug & Play
- Furniture Available
- Parking Ratio: 5/1,000 SF
- Double Door Entry off the Elevator Lobby
- Complimentary Airport Shuttle Service during normal business hours
- Rotating Food Trucks on-site Monday-Thursday



## Corporate Center II

4211 W. Boy Scout Boulevard | Tampa, FL 33607

# For Sublease



## Contact Us

### Cody Warren

First Vice President  
+1 813 528 1072  
cody.warren@cbre.com

### Alyssa Dominguez

Transaction Manager  
+1 850 530 0325  
alyssa.dominguez@cbre.com

© 2025 CBRE, Inc. All rights reserved. This information has been obtained from sources believed reliable, but has not been verified for accuracy or completeness. You should conduct a careful, independent investigation of the property and verify all information. Any reliance on this information is solely at your own risk. CBRE and the CBRE logo are service marks of CBRE, Inc. All other marks displayed on this document are the property of their respective owners, and the use of such logos does not imply any affiliation with or endorsement of CBRE. Photos herein are the property of their respective owners. Use of these images without the express written consent of the owner is prohibited.