

37849-37881 INTERCHANGE DRIVE FARMINGTON HILLS, MICHIGAN

HI-TECH FOR SALE OR LEASE

For Sale: 66,036 Square Feet

For Lease: 8,603 - 35,909 Square Feet



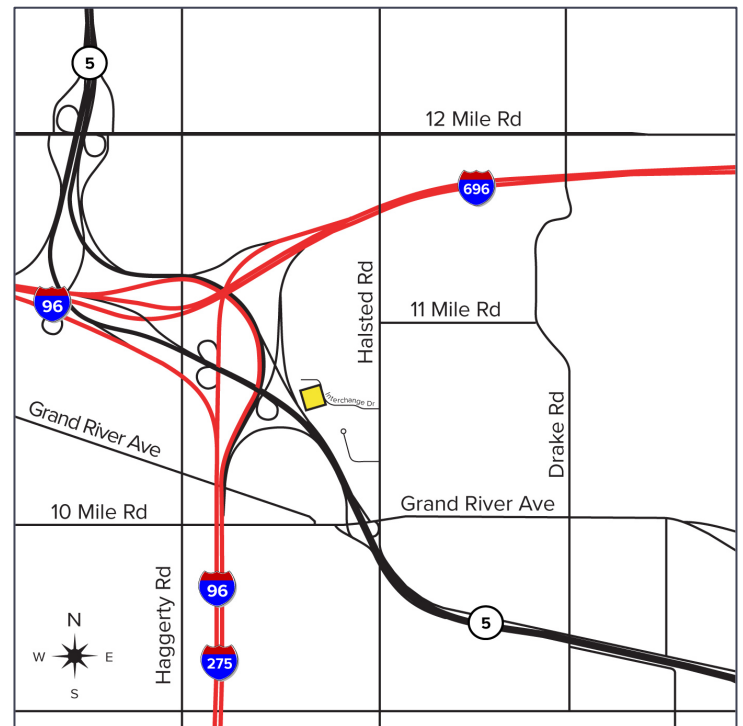
**SIGNATURE
ASSOCIATES**
KNOW SIGNATURE | KNOW RESULTS

HALSTED COMMERCE PARK



PROPERTY FEATURES

- 8,603 - 35,909 square feet available for lease
- 66,036 square foot building for sale
- 20' clear height
- (3) grade level doors, (1) truckwell
- Zoned IRO, Industrial/Research
- Includes backup generator
- 37849: Formerly occupied by DTE, this 16,863 sq. ft. space is in "white box" condition
- 37881: JST will be vacating as of 6/30/2025
- The entire building could be sold and would include a lease with Patterson Dental



For more information, please contact:

JEFF LEMANSKI

(248) 359 0641

jlemanski@signatureassociates.com

CHRISTOPHER M. D'ANGELO

(248) 948 0109

cdangelo@signatureassociates.com

SIGNATURE ASSOCIATES

One Towne Square, Suite 1200

Southfield, MI 48076

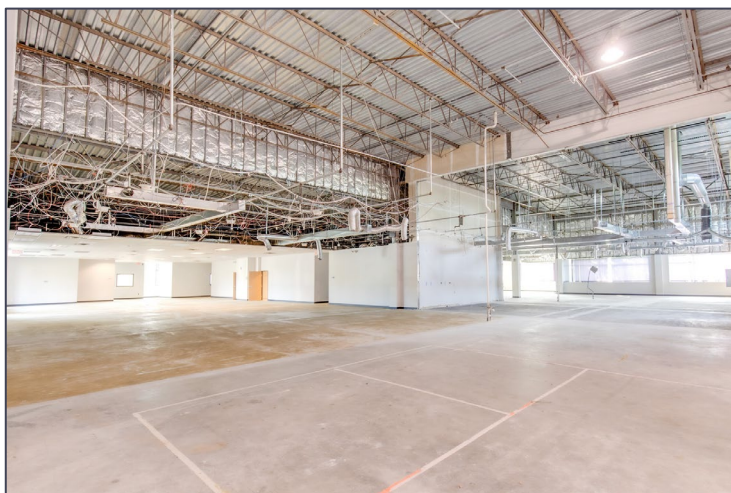
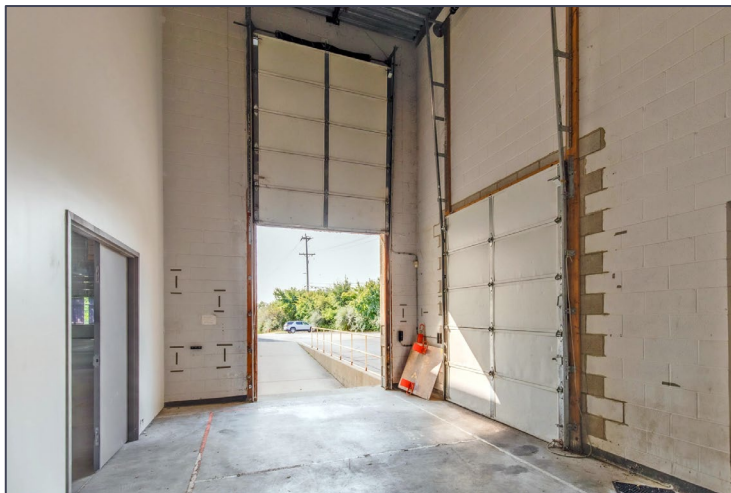
www.signatureassociates.com

37849-37881 Interchange Dr – Farmington Hills, Michigan

Hi-Tech For Sale or Lease

8,603 - 35,909
Square Feet
AVAILABLE

37849 Interchange Drive



For more information, please contact:

JEFF LEMANSKI
(248) 359 0641
jlemanski@signatureassociates.com

CHRISTOPHER M. D'ANGELO
(248) 948 0109
cdangelo@signatureassociates.com

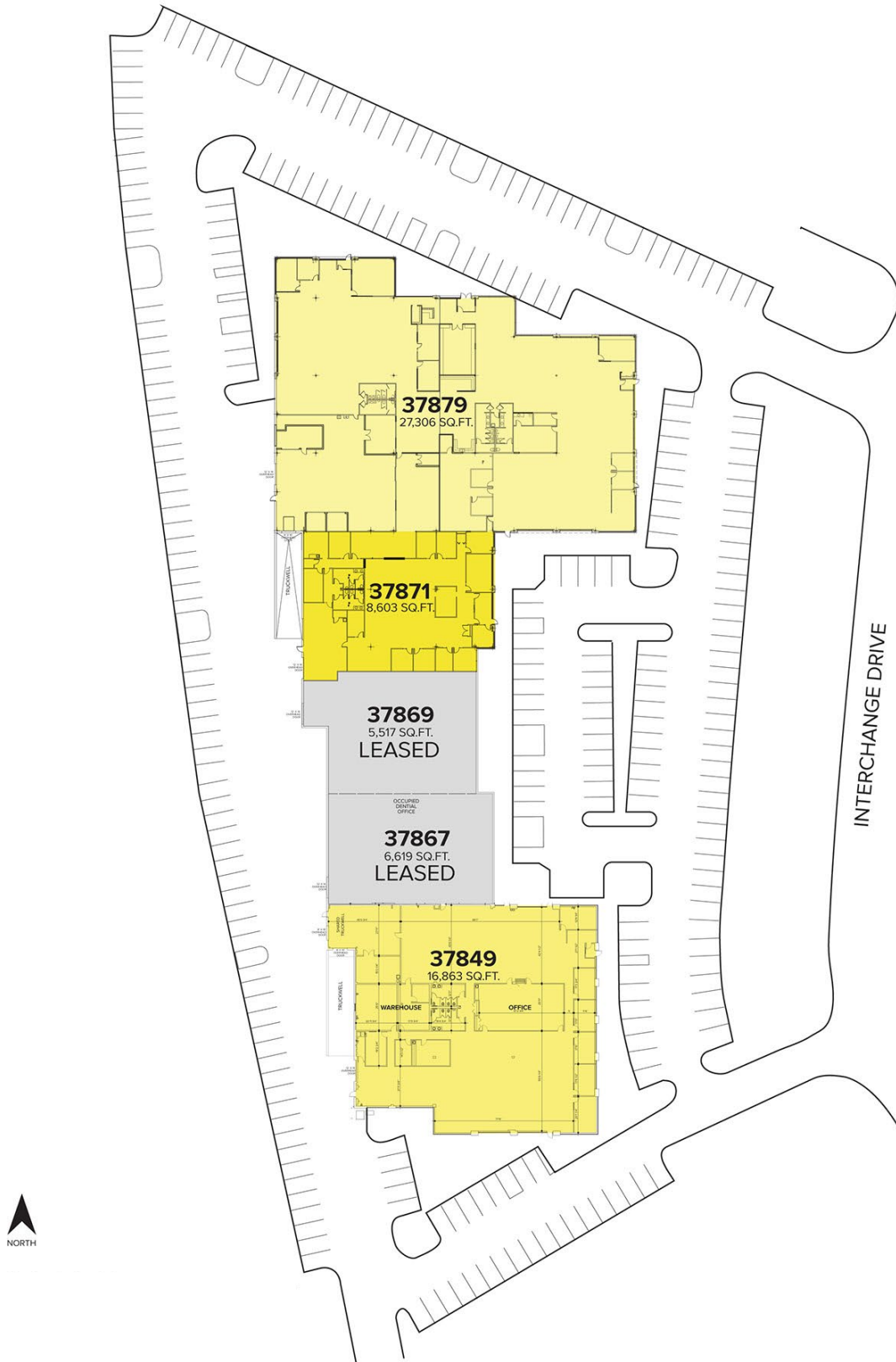
SIGNATURE ASSOCIATES
One Towne Square, Suite 1200
Southfield, MI 48076
www.signatureassociates.com

37849-37881 Interchange Dr – Farmington Hills, Michigan

Hi-Tech For Sale or Lease

8,603 - 35,909
Square Feet
AVAILABLE

Site Plan



For more information, please contact:

JEFF LEMANSKI

(248) 359 0641

jlemanski@signatureassociates.com

CHRISTOPHER M. D'ANGELO

(248) 948 0109

cdangelo@signatureassociates.com

SIGNATURE ASSOCIATES

One Towne Square, Suite 1200

Southfield, MI 48076

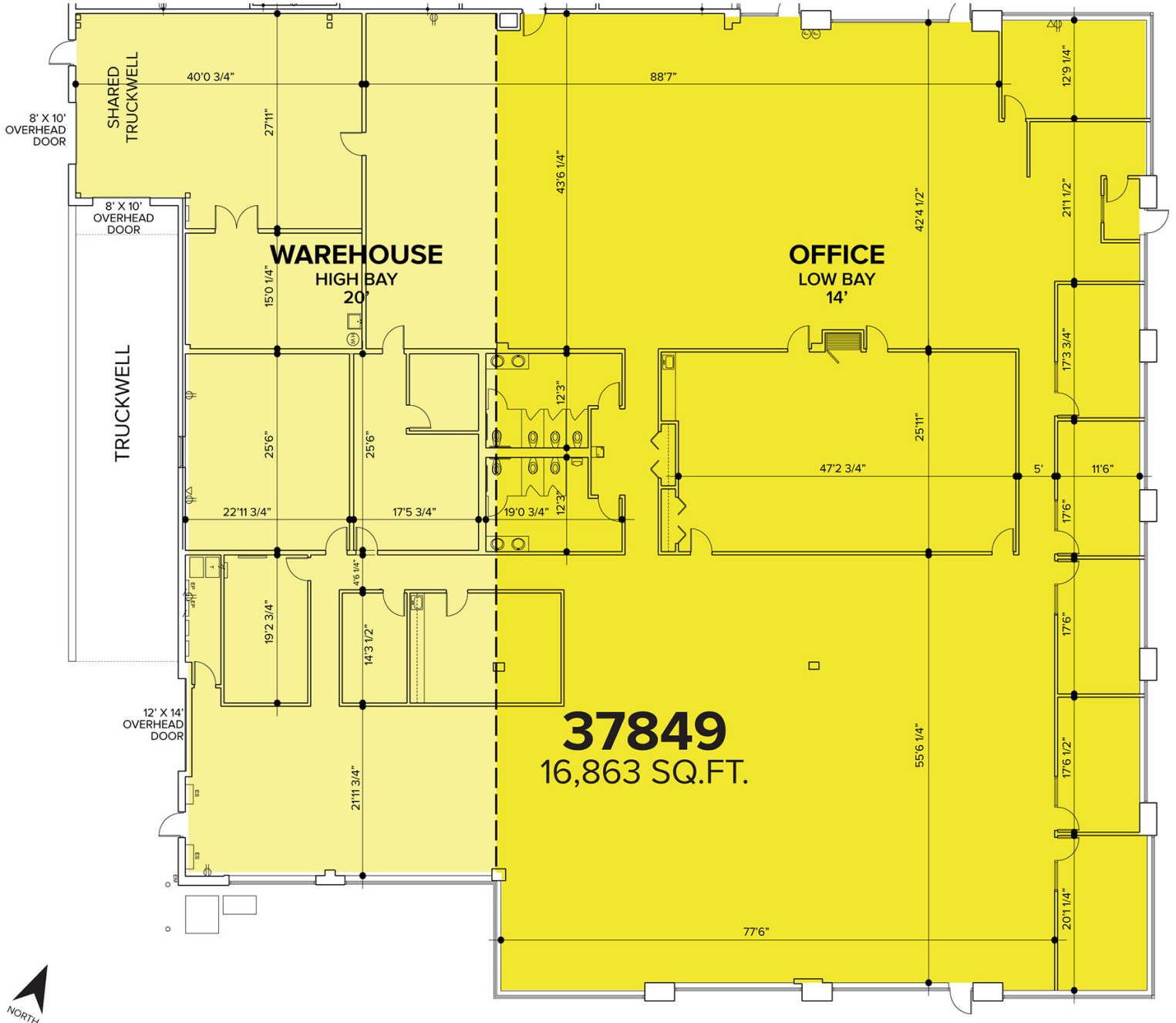
www.signatureassociates.com

37849-37881 Interchange Dr – Farmington Hills, Michigan

Hi-Tech For Sale or Lease

8,603 - 35,909
Square Feet
AVAILABLE

37849 Interchange Drive



For more information, please contact:

JEFF LEMANSKI

(248) 359 0641

jlemanski@signatureassociates.com

CHRISTOPHER M. D'ANGELO

(248) 948 0109

cdangelo@signatureassociates.com

SIGNATURE ASSOCIATES

One Towne Square, Suite 1200

Southfield, MI 48076

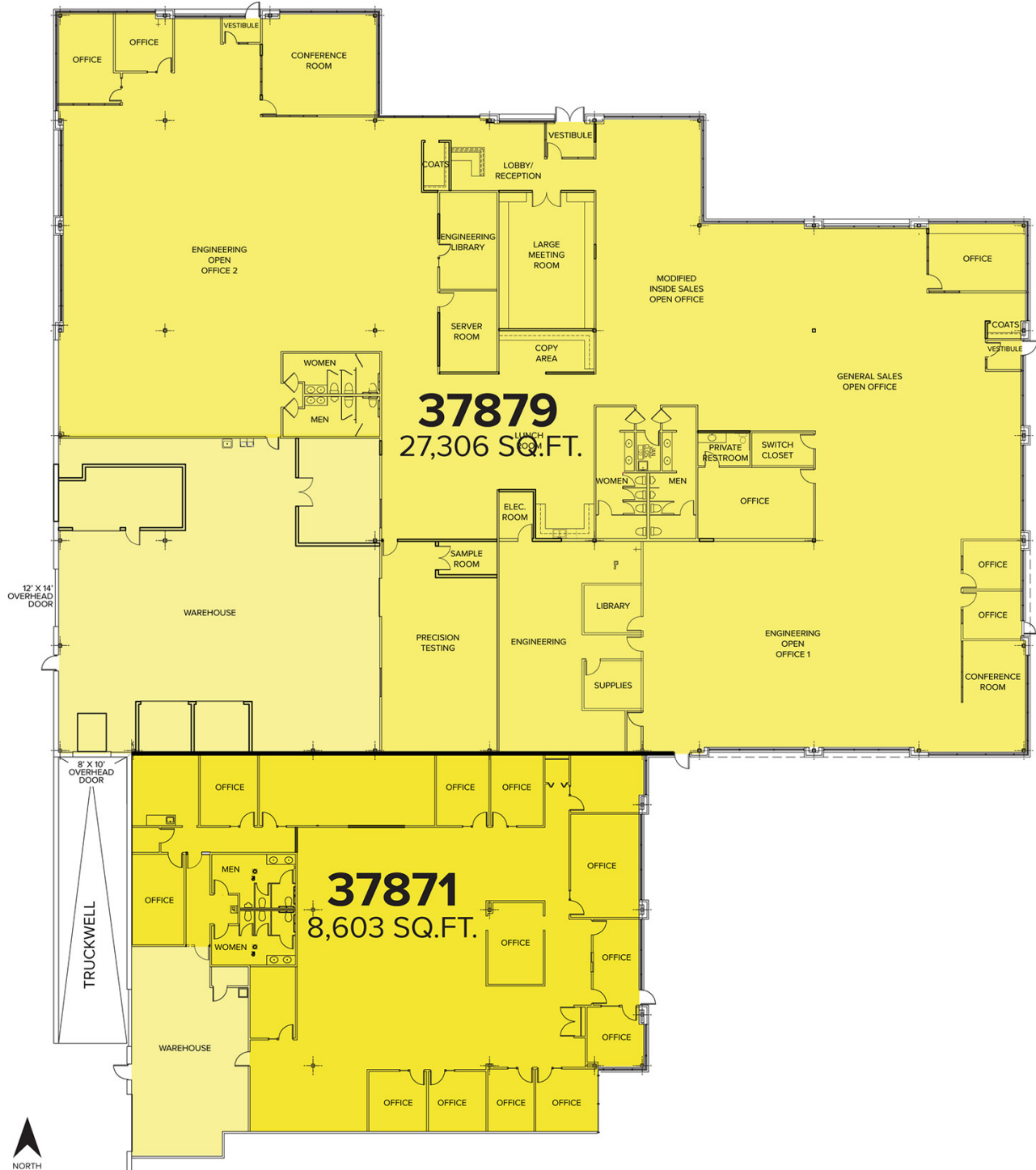
www.signatureassociates.com

37849-37881 Interchange Dr – Farmington Hills, Michigan

Hi-Tech For Sale or Lease

8,603 - 35,909
Square Feet
AVAILABLE

37871-37879 Interchange Drive
Combined – 35,909 SF



For more information, please contact:

JEFF LEMANSKI

(248) 359 0641

jlemanski@signatureassociates.com

CHRISTOPHER M. D'ANGELO

(248) 948 0109

cdangelo@signatureassociates.com

SIGNATURE ASSOCIATES

One Towne Square, Suite 1200

Southfield, MI 48076

www.signatureassociates.com

37849-37881 Interchange Dr – Farmington Hills, Michigan

Hi-Tech For Sale or Lease

8,603 - 35,909
Square Feet
AVAILABLE

Aerial



For more information, please contact:

JEFF LEMANSKI
(248) 359 0641

jlemanski@signatureassociates.com

CHRISTOPHER M. D'ANGELO
(248) 948 0109

cdangelo@signatureassociates.com

SIGNATURE ASSOCIATES
One Towne Square, Suite 1200
Southfield, MI 48076
www.signatureassociates.com