



CLASS A MEDICAL OFFICE RIVER ARTS DISTRICT

FOR LEASE

408 DEPOT SUITE 150

ASHEVILLE, NC 28801



OFFERING SUMMARY

Available SF	2,329 SF
Lease Rate	\$30.00 SF/YR (NNN)
NNN/SF	\$7.08/sf
Property Type	Office, Medical



SPECIFICATIONS & LAYOUT

408 Depot Suite 150, Asheville, NC 28801

PROPERTY DESCRIPTION

Class A Medical Office suite for lease in the River Arts District. This medical condo boasts 5 efficient exam and medical offices with several offices/consult rooms for admin and doctors.

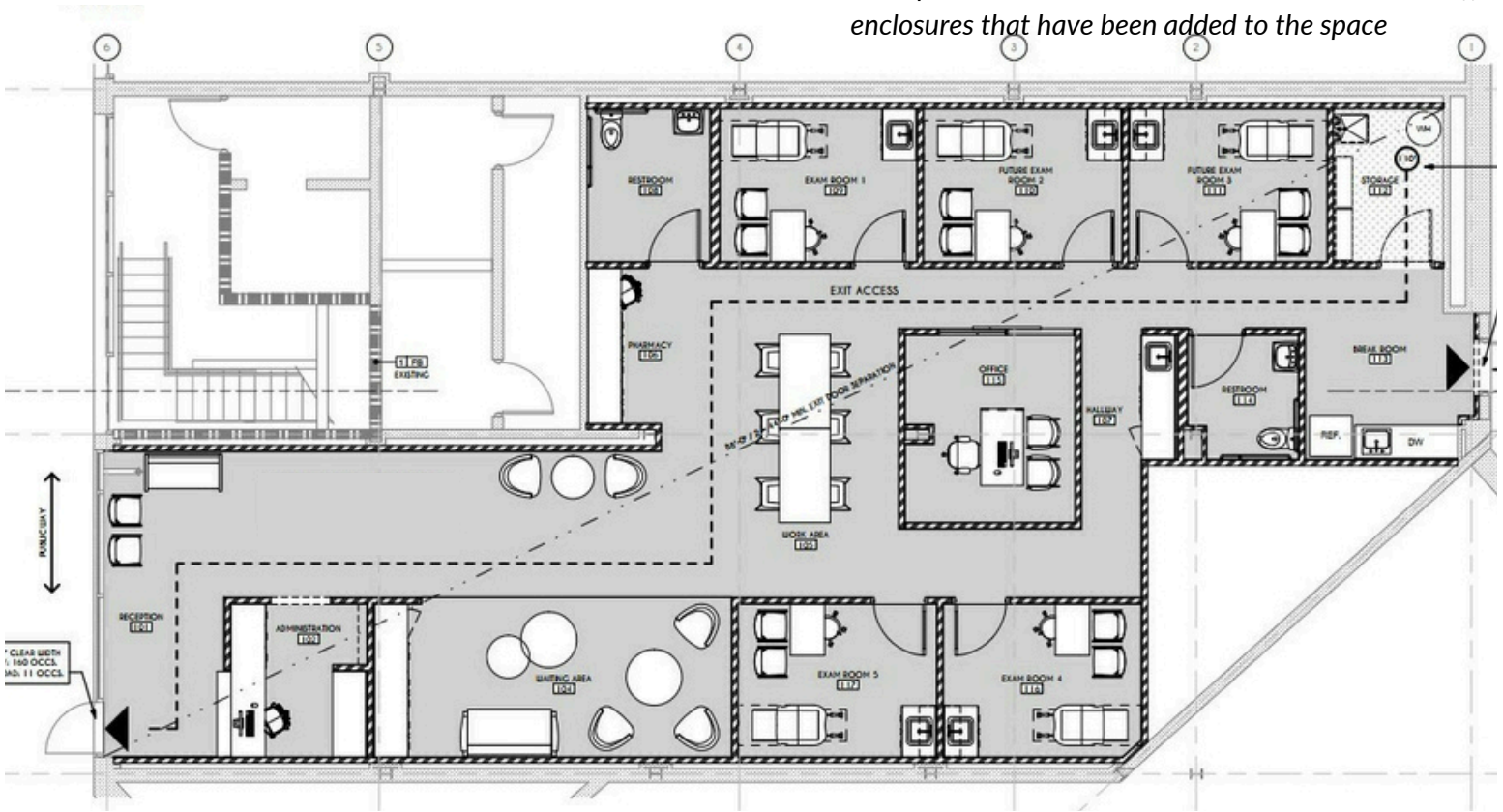
Located blocks from Mission Hospital and other medical amenities within the funky River Arts District, boasting an array of restaurants, eclectic shops, art galleries, and medical facilities, providing a perfect balance of work and leisure.

The convenience of this central location coupled with the surrounding complimentary businesses provide an ideal setting for an office or medical office tenant seeking an inspiring and diverse environment. Shared parking across Depot Street and readily available parking in front.

PROPERTY HIGHLIGHTS

- Prime location in Asheville, NC
- 5 exam rooms, multiple consult rooms, reception, breakroom.
- Modern, light filled medical office space
- High-quality finishes and fixtures
- On-site parking available for tenants
- Easy access to major highways and public transit
- Co-Tenants include: Scorch Fitness, Compassionate Grooming, River Arts Dentistry, Local Cloth

Floor plan does not illustrate some recent modular office enclosures that have been added to the space

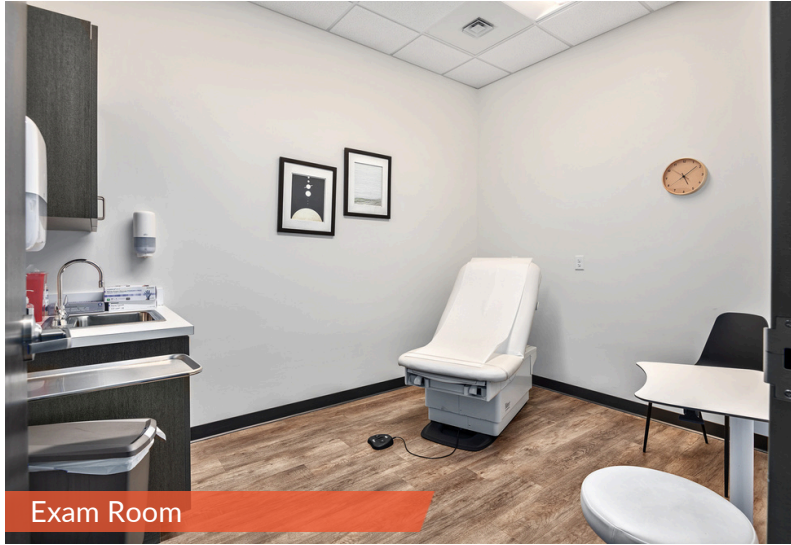


PICTURES

408 Depot Suite 150, Asheville, NC 28801



Meeting Room



Exam Room



Large Consult Room



Break Room



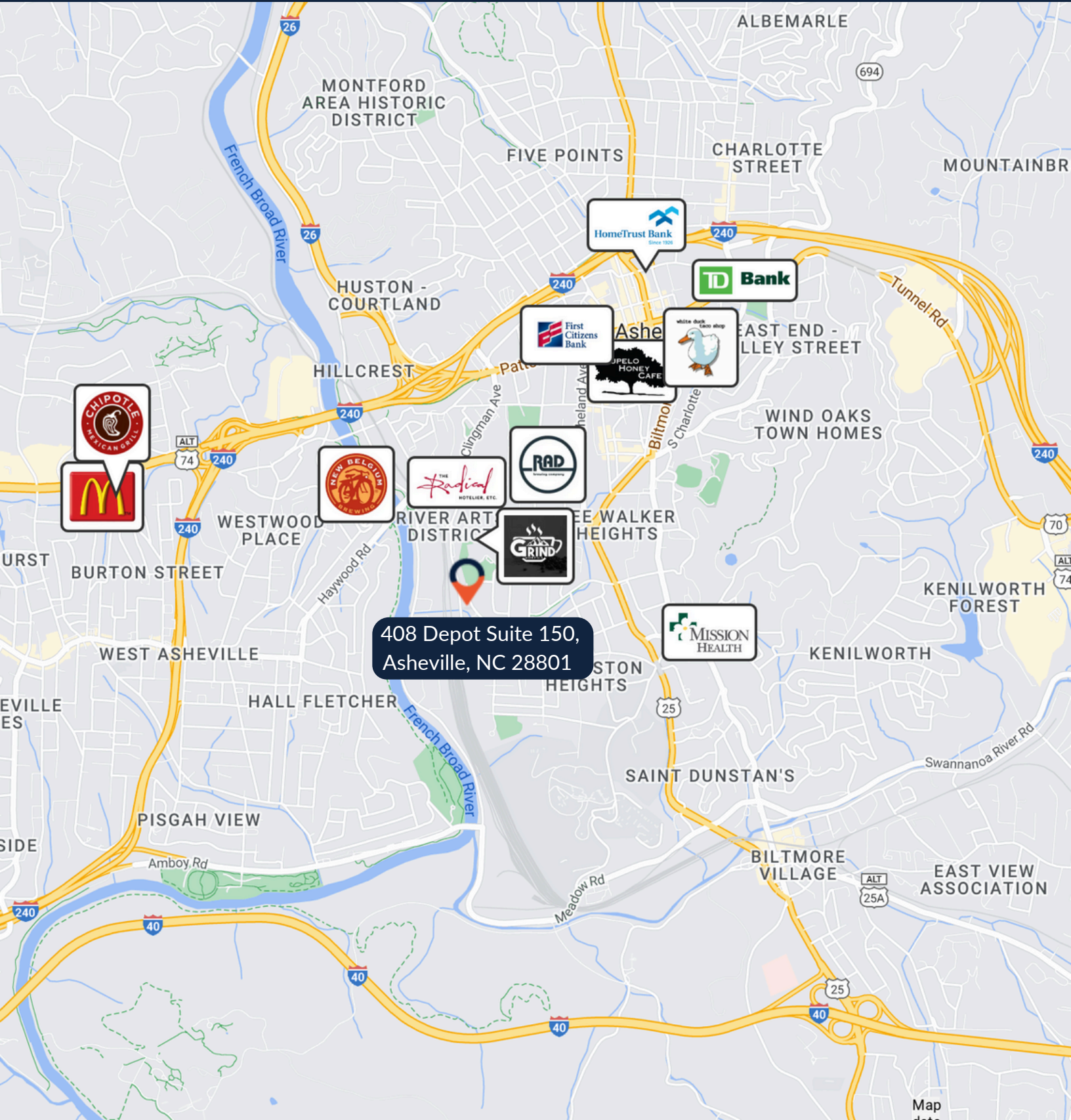
River Arts District



Waiting Room & Consult Rooms

AREA LANDMARKS

408 Depot Suite 150, Asheville, NC 28801



408 Depot Suite 150,
Asheville, NC 28801

