

# FOR SALE

## 4916 CECILIA ST, CUDAHY, CA 90201



### **EXCLUSIVELY LISTED BY:**

**Rose O'Sullivan**

Executive Vice President

d: 818-742-1615 | m: 805-338-9232

rosullivan@naicapital.com

Cal DRE Lic #01904175

**Jared Swedelson**

Vice President

d: 818-742-1632 | m: 818-644-7597

jswedelson@naicapital.com

Cal DRE Lic #02105146

**NAI Capital - Encino**

15821 Centura Blvd., Suite 320E

Los Angeles, CA 91436

d: 818-905-2400 | f: 818-905-2425

www.naicapital.com

**NAI Capital**  
COMMERCIAL REAL ESTATE SERVICES, WORLDWIDE

# TABLE OF CONTENTS

<b>PROPERTY PRICING</b>	<b>01</b>
<b>PROPERTY DETAILS</b>	<b>02</b>
<b>SITE PLAN</b>	<b>03</b>
<b>AERIAL MAPS</b>	<b>04</b>
<b>AREA OVERVIEW</b>	<b>06</b>

No warranty, express or implied, is made as to the accuracy of the information contained herein. This information is submitted subject to errors, omissions, change of price, rental or other conditions, withdrawal without notice, and is subject to any special listing conditions imposed by our principals. Cooperating brokers, buyers, tenants and other parties who receive this document should not rely on it, but should use it as a starting point of analysis, and should independently confirm the accuracy of the information contained herein through a due diligence review of the books, records, files and documents that constitute reliable sources of the information described herein. Logos are for identification purposes only and may be trademarks of their respective companies. NAI Capital, Inc. Cal DRE Lic. #02130474.

# PROPERTY PRICING

## FOR SALE

68,500 SF OF IMPROVEMENTS  
ON 2.34 AC OF LAND

Price: \$20,000,000

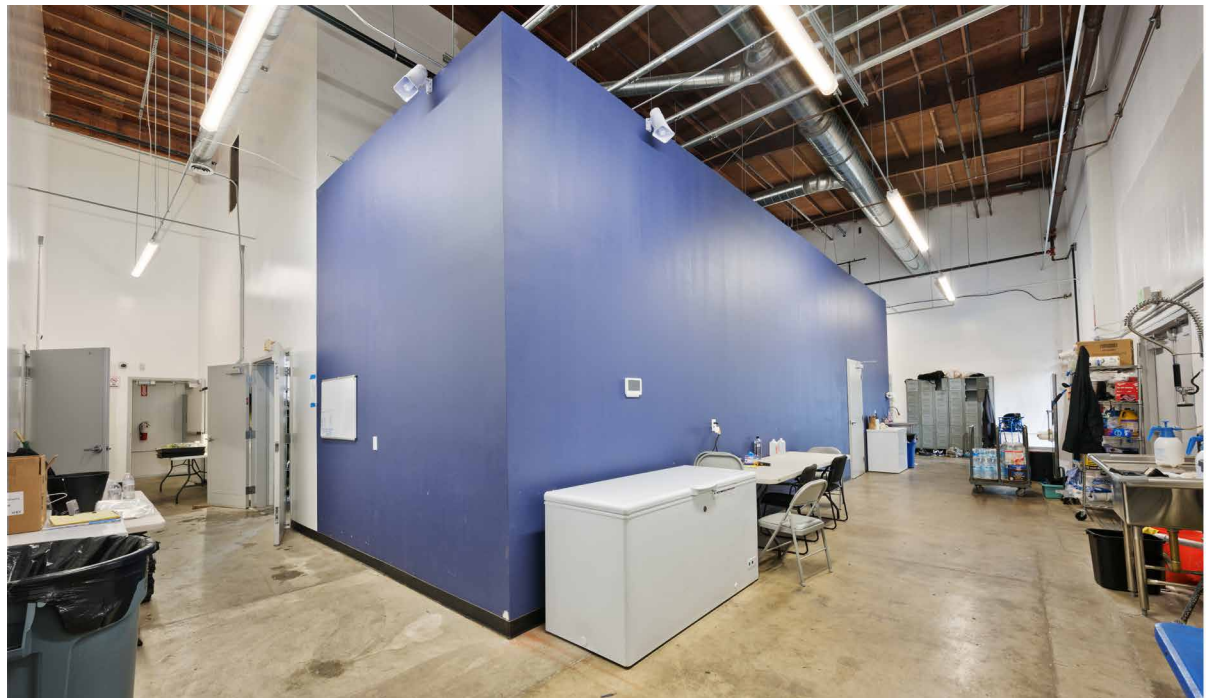
Price per SF: \$291

Price per Land SF: \$196

## FOR LEASE

Availability: 68,500 SF

Lease Rate: Negotiable



# PROPERTY DETAILS

4916 CECILIA ST, CUDAHY 90201

Clearance Height:	16 - 24 ft'
Power:	8000 AMPS (Newly installed)
Grade Level Doors:	4 (8X12)
Improvements:	Recently renovated with heavy power and 1/3rd of the building has been converted to accommodate a grow house
Year Built:	1965
Zoning:	CUM2*
Green Zone:	Yes
Fire Sprinklered:	Yes



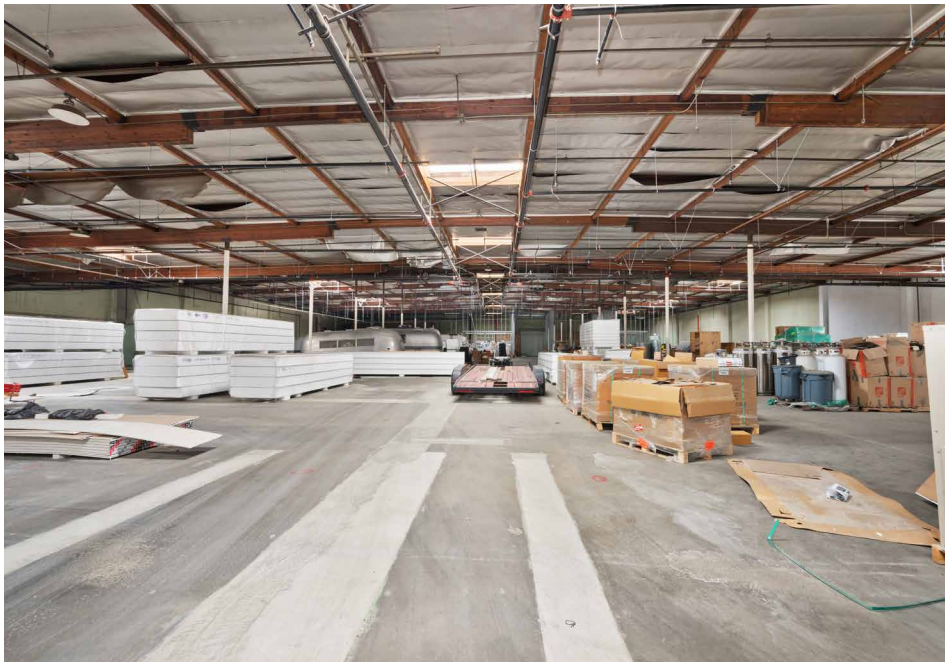
# LOCATION MAP



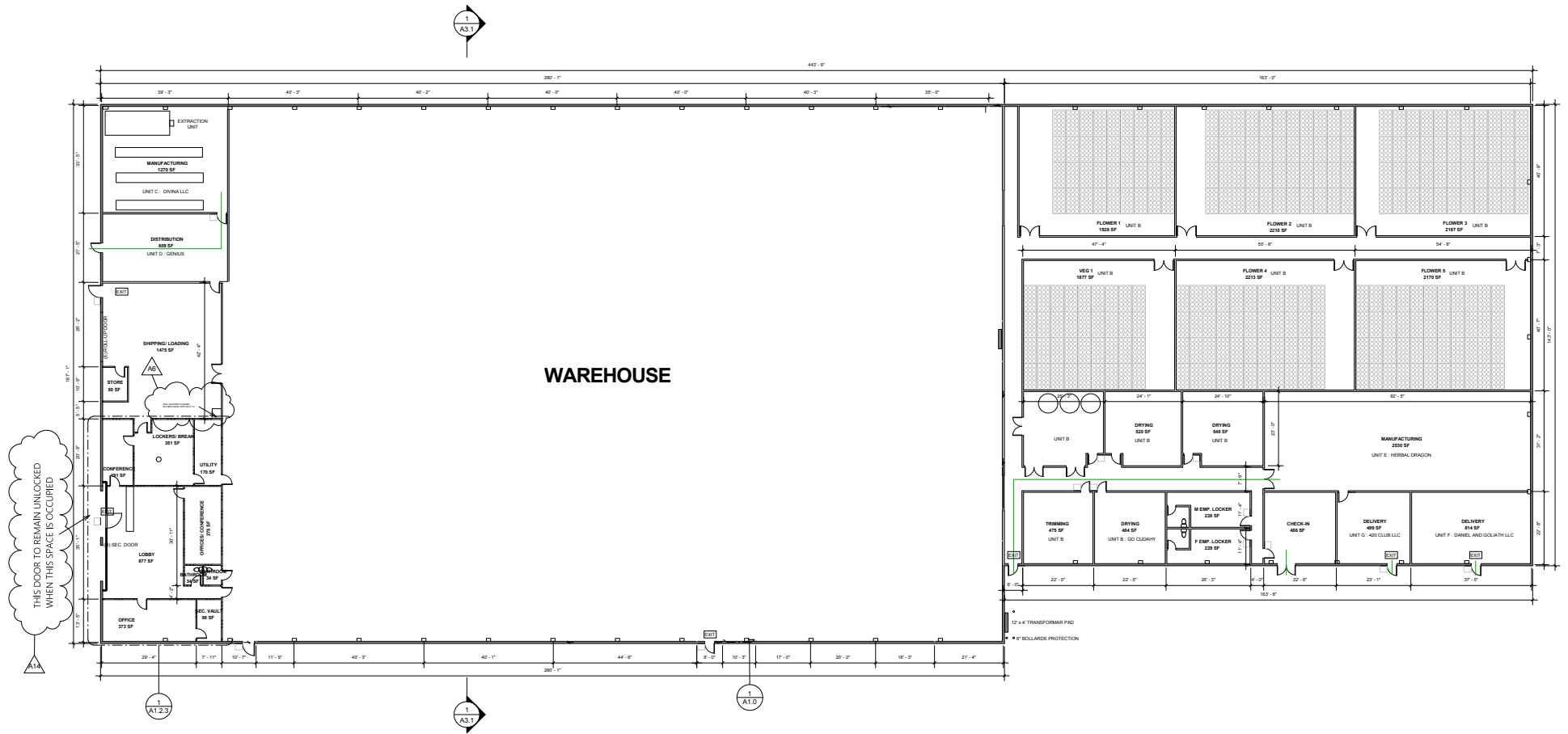
# PROPERTY PHOTOS



# PROPERTY PHOTOS



# SITE PLAN





# AERIAL MAP



# AREA OVERVIEW

Located in Central South Los Angeles, adjacent to the bustling Downey/Vernon market, the city of Cudahy offers a strategic location for businesses. Positioned conveniently off the 710 Freeways, it serves as a vital link on the industrial corridor connecting downtown Los Angeles to the Port of Long Beach.

Despite being the second smallest city in Los Angeles County, after Hawaiian Gardens, Cudahy boasts one of the highest population densities among incorporated cities in the United States.

The industrial sector in Cudahy thrives, with vacancy rates consistently below 6%, mirroring trends seen across the broader Los Angeles area. This scarcity of available space has driven up demand, leading to current effective rents averaging \$1.35 per square foot—an increase of 2.7% compared to the previous year.

Investors find Cudahy an attractive market, with current cap rates hovering around 5%, aligning with historical market rates. This stability and growth potential make Cudahy a compelling destination for industrial ventures seeking prime real estate opportunities in Southern California.



VACANCY:  
2%



TOTAL SUBMARKET  
INVENTORY:  
21,710,000 SF



MARKET RENT:  
\$1.35/SF



GREATER LA  
MARKET RENT:  
\$1.60/SF

## DEMOGRAPHICS

	1 Mile	3 Miles
Population	43,023	351,970
Household	10,146	82,432
Median Age	33.50	33.80
Median HH Income	\$51,340	\$54,984
Daytime Employees	8,144	92,517

Source: CoStar

# FOR SALE

## 4916 CECILIA ST, CUDAHY, CA 90201

4916-A

FOR SALE  
NAI Capital  
AVAILABLE  
818-905-2400  
ROSE O'SULLIVAN 805-338-9232  
JARED SWEDELSON Lic #02105146

### **EXCLUSIVELY LISTED BY:**

#### **Rose O'Sullivan**

Executive Vice President  
d: 818-742-1615 | m: 805-338-9232  
rosullivan@naicapital.com  
Cal DRE Lic #01904175

#### **Jared Swedelson**

Vice President  
d: 818-742-1632 | m: 818-644-7597  
jswedelson@naicapital.com  
Cal DRE Lic #02105146

#### **NAI Capital - Encino**

15821 Centura Blvd., Suite 320E  
Los Angeles, CA 91436  
d: 818-905-2400 | f: 818-905-2425  
www.naicapital.com

**NAI Capital**  
COMMERCIAL REAL ESTATE SERVICES, WORLDWIDE