

1001 PRINCE GEORGES BLVD  
UPPER MARLBORO, MD 20774



FOR LEASE

## Industrial Warehouse/ Flex Condos

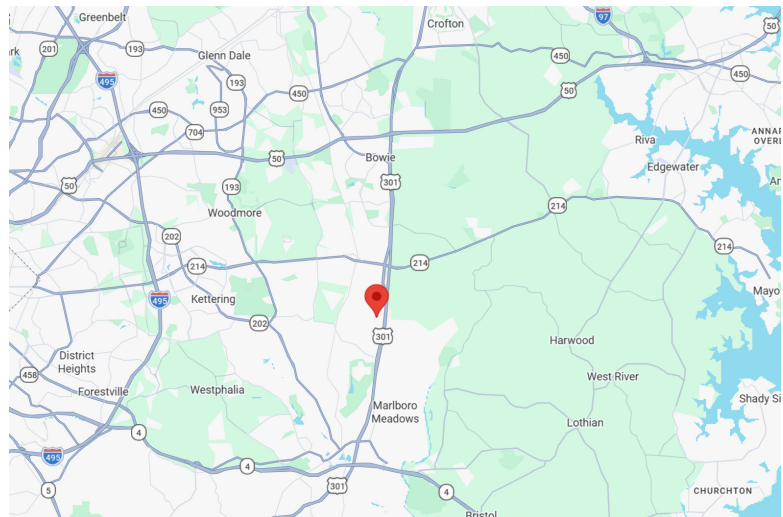
- Six Condo units totaling  $\pm$  17,012 sqft ( Divisible)
  - Unit 100 & 150:  $\pm$  5,049 (Office space)
  - Unit 250 - 400:  $\pm$  11,963 (Office and Warehouse) ( Divisible)
- Zoned IH - Ample parking
- Off of RT-301 with easy access to I-495 and I-95
- **Contact agent for pricing**

**MATTHEW ANTONIS**  
*Commercial Salesperson*

**410-449-1072**  
mantonis@friendre.com

**TED KROOS**  
*Commercial Salesperson*

**410-449-1074**  
tkroos@friendre.com



**Main: 410-449-1144 · Fax: 410-983-3956 · friendre.com**  
8436 Veterans Hwy, Millersville, MD 21108

All information is from sources deemed reliable; However, we are not responsible for errors, omissions, misinterpretation, or misuse of information presented; We make no warranty of any kind, express or implied, with respect to the property or any other matters; Information and the property is subject to change, corrections, prior sales, or withdrawal.

1001 PRINCE GEORGES BLVD  
UPPER MARLBORO, MD 20774



3D Tour



## Unit 100 & 150

- Features 15 private offices, a large conference room, 2 bathrooms, a kitchenette, and a reception area
- Ideal for a variety of commercial, institutional, & office uses
- Potential for warehouse conversion
- 2 existing drive-in bays
- **Contact agent for pricing**



**MATTHEW ANTONIS**  
Commercial Salesperson  
**410-449-1072**  
Mantonis@friendre.com



**TED KROOS**  
Commercial Salesperson  
**410-449-1074**  
tkroos@friendre.com

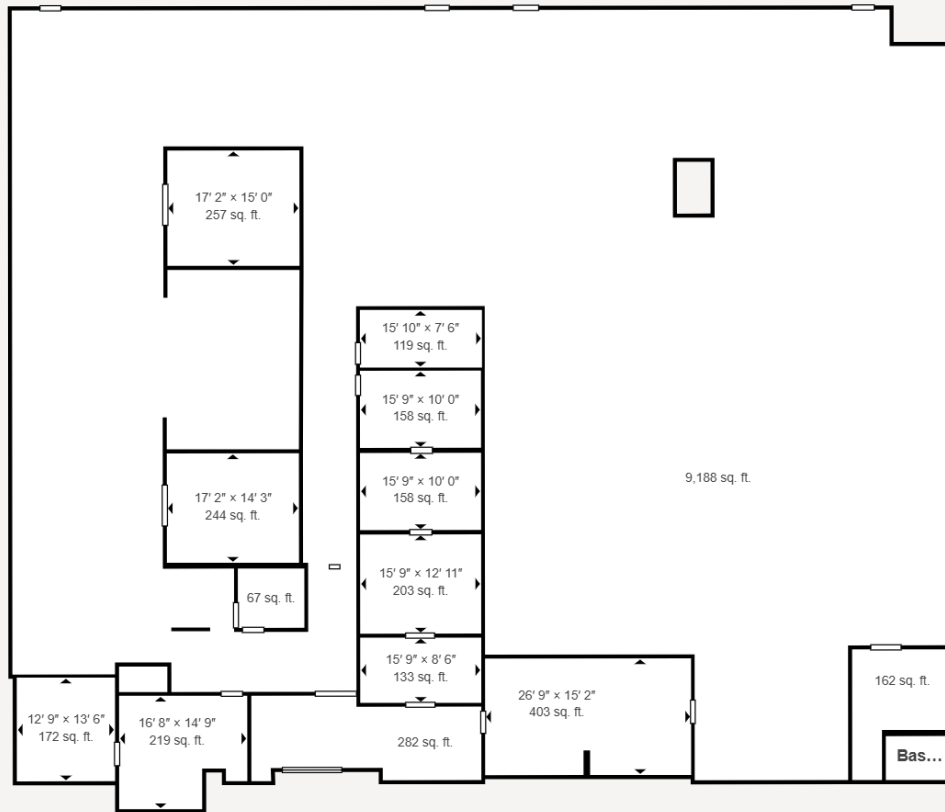
**Main: 410-449-1144 · Fax: 410-983-3956 · friendre.com**  
8436 Veterans Hwy, Millersville, MD 21108

All information is from sources deemed reliable; However, we are not responsible for errors, omissions, misinterpretation, or misuse of information presented; We make no warranty of any kind, express or implied, with respect to the property or any other matters; Information and the property is subject to change, corrections, prior sales, or withdrawal.

1001 PRINCE GEORGES BLVD  
UPPER MARLBORO, MD 20774



3D Tour



## Unit 250-400

### Contiguous warehouse space

- ± 11,963 sqft of warehouse - 100' deep
- Features a front office and a showroom
- 4 Automatic drive-in doors - 14'
- 3 Phase Electric
- 20' clear ceiling height
- **Contact agent for pricing**



**MATTHEW ANTONIS**

*Commercial Salesperson*

**410-449-1072**

Mantonis@friendre.com



**TED KROOS**

*Commercial Salesperson*

**410-449-1074**

tkroos@friendre.com

**Main: 410-449-1144 · Fax: 410-983-3956 · friendre.com**  
8436 Veterans Hwy, Millersville, MD 21108

All information is from sources deemed reliable; However, we are not responsible for errors, omissions, misinterpretation, or misuse of information presented; We make no warranty of any kind, express or implied, with respect to the property or any other matters; Information and the property is subject to change, corrections, prior sales, or withdrawal.



**MATTHEW ANTONIS**  
 Commercial Salesperson  
**410-449-1072**  
 Mantonis@friendre.com



**TED KROOS**  
 Commercial Salesperson  
**410-449-1074**  
 tkroos@friendre.com

**Main: 410-449-1144 · Fax: 410-983-3956 · friendre.com**  
 8436 Veterans Hwy, Millersville, MD 21108

All information is from sources deemed reliable; However, we are not responsible for errors, omissions, misinterpretation, or misuse of information presented; We make no warranty of any kind, express or implied, with respect to the property or any other matters; Information and the property is subject to change, corrections, prior sales, or withdrawal.