

# 651

THUNDERBOLT

CHICO | CA

## For Sale

±13,970 Square Feet

Warehouse with heavy power and fenced yard space in Chico, CA

- Skylights, clear-span layout, and full fire suppression system.
- 480 V/3-phase power with ~30 kVA and ~75 kVA capacities.
- One grade-level roll-up door and one recessed dock-high truck well.



### CARRIE WELCH, CCIM

Director of Sales & Leasing  
530.570.5107  
carrie@capitalrivers.com  
DRE #01926238

### KELSEY WATT, MS

Director of Sales & Leasing  
530.908.4905  
kelsey@capitalrivers.com  
DRE #02035244



**CAPITAL RIVERS**  
COMMERCIAL

# EXECUTIVE SUMMARY

**651**  
THUNDERBOLT  
CHICO | CA

## PROPERTY OVERVIEW

Located at 651 Thunderbolt Street in Chico, CA, this  $\pm 13,970$  SF warehouse includes approximately  $\pm 7,000$  SF of fenced yard space. The property features one grade-level roll-up door, one recessed dock-high truck well, and 480 V/3-phase power with  $\sim 30$  kVA and  $\sim 75$  kVA capacities. Interior improvements include full fire suppression, hose bibs, HVAC-served office, break area, and skylights over a clear-span layout. Zoned Airport Manufacturing, the site supports a variety of industrial and warehouse uses.

Situated in the Chico Municipal Airport Industrial area, the property offers quick access to Highway 99 and nearby arterials. Surrounding users include manufacturing, logistics, and service-based businesses. The site provides secure yard space, on-site parking, and efficient truck circulation in a well-connected industrial location.

The building may also be purchased together with the adjacent property at 265 Boeing Avenue, which includes a  $\pm 19,920$  SF building and  $\pm 6,000$  SF yard.

## OFFERING SUMMARY

**Price:** \$963,930



© Capital Rivers Commercial. This information has been obtained from sources believed reliable. We have not verified it and make no guarantee, warranty or representation about it. DRE #01522447

### CARRIE WELCH, CCIM

Director of Sales & Leasing  
530.570.5107  
carrie@capitalrivers.com  
DRE #01926238

### KELSEY WATT, MS

Director of Sales & Leasing  
530.908.4905  
kelsey@capitalrivers.com  
DRE #02035244



**CAPITAL RIVERS**  
COMMERCIAL



# PROPERTY PHOTOS

**651**  
THUNDERBOLT  
CHICO | CA



## CARRIE WELCH, CCIM

Director of Sales & Leasing  
530.570.5107  
carrie@capitalrivers.com  
DRE #01926238

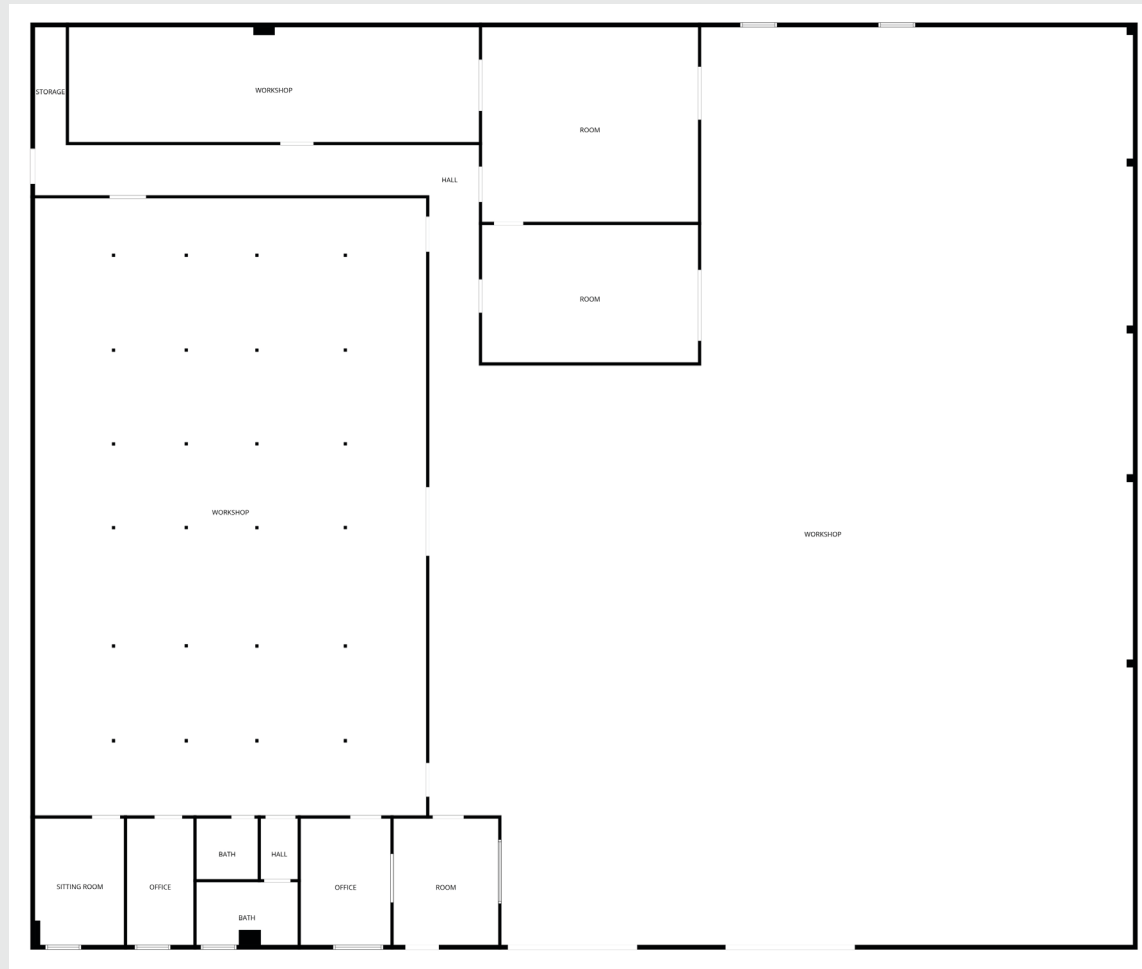
## KELSEY WATT, MS

Director of Sales & Leasing  
530.908.4905  
kelsey@capitalrivers.com  
DRE #02035244



**CAPITAL RIVERS**  
COMMERCIAL

# FLOOR PLAN



© Capital Rivers Commercial. This information has been obtained from sources believed reliable. We have not verified it and make no guarantee, warranty or representation about it. DRE #01522447

## CARRIE WELCH, CCIM

Director of Sales & Leasing  
530.570.5107  
carrie@capitalrivers.com  
DRE #01926238

## KELSEY WATT, MS

Director of Sales & Leasing  
530.908.4905  
kelsey@capitalrivers.com  
DRE #02035244



**CAPITAL RIVERS**  
COMMERCIAL

# ABOUT CHICO, CA



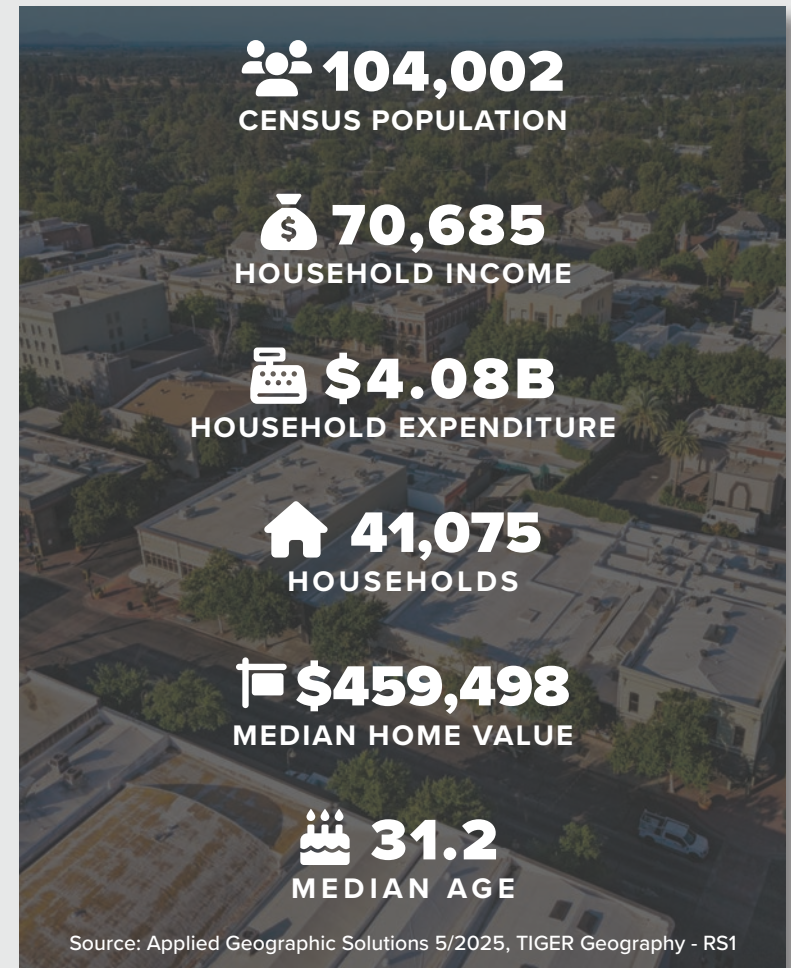
Chico, the most populous city in Butte County and fastest growing city in the state of California, is located at the northeast edge of the Sacramento Valley. As of the 2020 Census, Chico's population was 103,620, increasing to 104,002 after the 2018 Camp Fire displaced many Paradise residents who moved to Chico.

As the cultural, economic, and educational hub of the northern Sacramento Valley, Chico is home to California State University, Chico, the Sierra Nevada Brewing Company, and Bidwell Park, the 26th largest municipal park in the country.

Chico is experiencing significant investments across retail, infrastructure, residential, healthcare, and education sectors. This growth highlights the city's attractiveness as a business and residential hub, with a dynamic and expanding economy.

For businesses considering expansion, Chico offers a vibrant market with ample opportunities. Real estate investors will find a promising landscape with rising property values. For residents, Chico provides a high quality of life with its urban amenities and natural beauty.

Chico's growth and investment make it a prime destination for success and prosperity. Whether you are looking to expand your business, invest in real estate, or find a vibrant community, Chico offers opportunities for growth, innovation, and quality of life.



© Capital Rivers Commercial. This information has been obtained from sources believed reliable. We have not verified it and make no guarantee, warranty or representation about it. DRE #01522447

**CARRIE WELCH, CCIM**  
Director of Sales & Leasing  
530.570.5107  
carrie@capitalrivers.com  
DRE #01926238

**KELSEY WATT, MS**  
Director of Sales & Leasing  
530.908.4905  
kelsey@capitalrivers.com  
DRE #02035244



**CAPITAL RIVERS**  
COMMERCIAL



# REGIONAL DEMOGRAPHICS

**651**  
THUNDERBOLT  
CHICO | CA

## DEMOGRAPHICS

1 MILE 3 MILES 5 MILES

### POPULATION

2025 Estimated Population	156	32,616	84,845
2030 Projected Population	166	32,903	83,970
2020 Census Population	214	32,759	87,224
2010 Census Population	207	26,949	76,864
2025 Median Age	45.5	36.6	35.2

### HOUSEHOLDS

2025 Estimated Households	60	13,182	34,016
2030 Projected Households	67	13,756	34,824
2020 Census Households	87	13,479	35,698
2010 Census Households	80	10,941	31,184

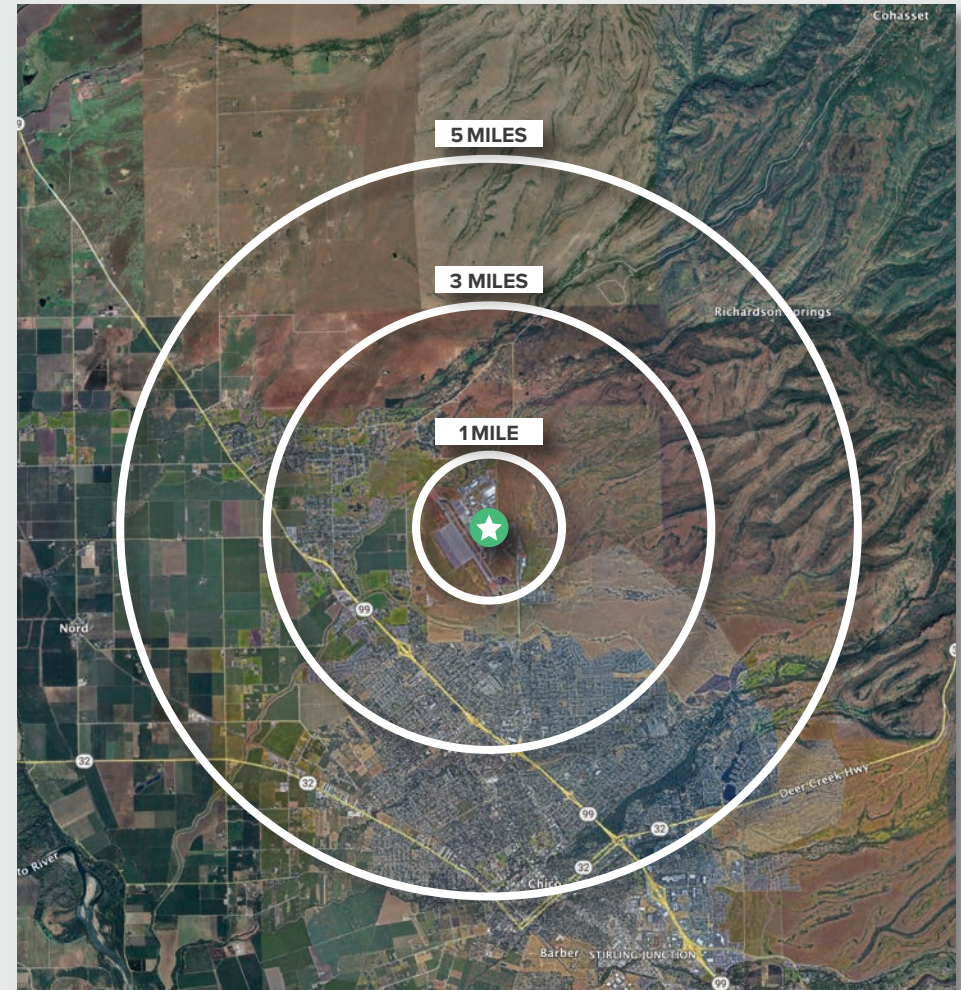
### INCOME

2025 Estimated Average Household Income	\$223,397	\$115,013	\$108,871
2025 Estimated Median Household Income	\$117,652	\$89,005	\$81,773
2025 Estimated Per Capita Income	\$86,800	\$46,569	\$43,951

### BUSINESS

2025 Estimated Total Businesses	200	1,425	3,653
2025 Estimated Total Employees	2,041	11,880	30,996

Source: Applied Geographic Solutions 5/2025, TIGER Geography - RS1



## CARRIE WELCH, CCIM

Director of Sales & Leasing  
530.570.5107  
carrie@capitalrivers.com  
DRE #01926238

## KELSEY WATT, MS

Director of Sales & Leasing  
530.908.4905  
kelsey@capitalrivers.com  
DRE #02035244



**CAPITAL RIVERS**  
COMMERCIAL

# ABOUT CAPITAL RIVERS



## CHOOSE EXCELLENCE OVER ORDINARY

Our team of brokerage, property management, and development professionals work together with you to deliver creative solutions that meet your goals and reduce risk.

### Creating a great experience is what we are all about.

Here at Capital Rivers we are dedicated to our core values helping make our real estate transactions and your brokerage experience more successful. We'll approach your project with loyalty, forward thinking, hard work, and passion. These are the values that drive everything we, as commercial real estate professionals do.

### When you contact Capital Rivers, expect a response.

As commercial brokers and agents we believe in building strong partnerships with each other and our clients through creativity, collaboration, and gratitude. Our combined experience lets us build long lasting relationships with our team as well as everyone who comes through our front door. Capital Rivers' commercial brokerage team caters to clients not only in Northern California, including Sacramento, Chico, and Redding, but also across the United States.

Learn more at [capitalrivers.com](http://capitalrivers.com)



### PROPERTY MANAGEMENT

We understand that every property is unique requiring a comprehensive strategy to optimize performance.

[Learn more about Property Management](#)



### COMMERCIAL BROKERAGE

Our goal is to deliver a complete real estate solution designed specifically to meet your needs.

[Learn more about Commercial Brokerage](#)



### DEVELOPMENT

With a wealth of unique ideas and industry experience, we're well equipped to bring your projects to life.

[Learn more about Development](#)

#### SACRAMENTO, CA:

MAIN OFFICE  
1821 Q Street  
Sacramento, CA 95811  
916.514.5225

#### CHICO, CA:

250 Vallombrosa Ave.  
Suite 450  
Chico, CA 95926  
530.570.5107

#### REDDING, CA:

280 Hemsted Drive  
Suite 104  
Redding, CA 96002  
530.221.1127

© Capital Rivers Commercial. This information has been obtained from sources believed reliable. We have not verified it and make no guarantee, warranty or representation about it. DRE #01522447

#### CARRIE WELCH, CCIM

Director of Sales & Leasing  
530.570.5107  
carrie@capitalrivers.com  
DRE #01926238

#### KELSEY WATT, MS

Director of Sales & Leasing  
530.908.4905  
kelsey@capitalrivers.com  
DRE #02035244



**CAPITAL RIVERS**  
COMMERCIAL