



420 S IRWINDALE AVE

AZUSA, CALIFORNIA 91702

OFFERING SUMMARY

Sale Price:	\$1,030,200
Building Size:	4,040 SF
Lot Size:	8,660 SF

Property Highlights

- +/- 4,040 SF Free Standing Industrial Building
- +/- 980 SF of Office
- Three (3) Grade Level Doors
- Fenced Yard with Two (2) Ingress/Egress
- 12' Minimum Warehouse Clearance
- 200 Amps/240 Volt Power (Buyer to Verify)
- Sprinklered
- Located within Minutes of the 210 and 605 Freeways

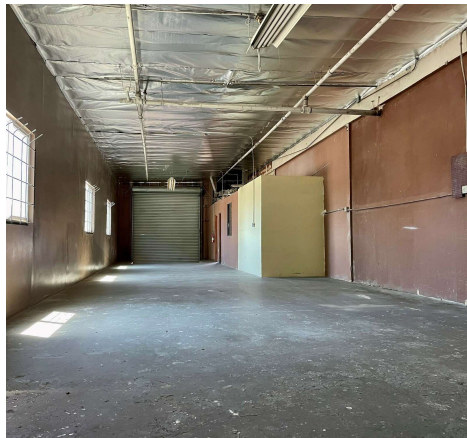
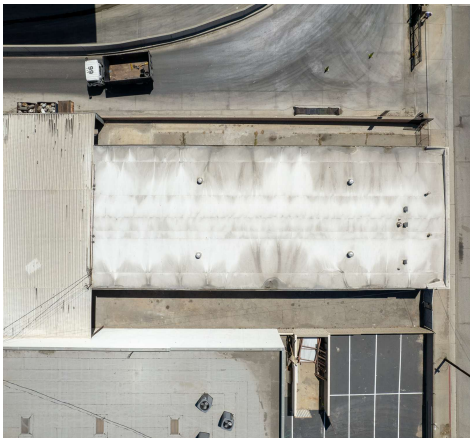
Richard Lee, SIOR
Executive Vice President
310.600.8888

rlee@naicapital.com
CA DRE #01757870

Nicholas Chang, CCIM, SIOR
Executive Vice President
949.375.2310

nchang@naicapital.com
CA DRE #01344844

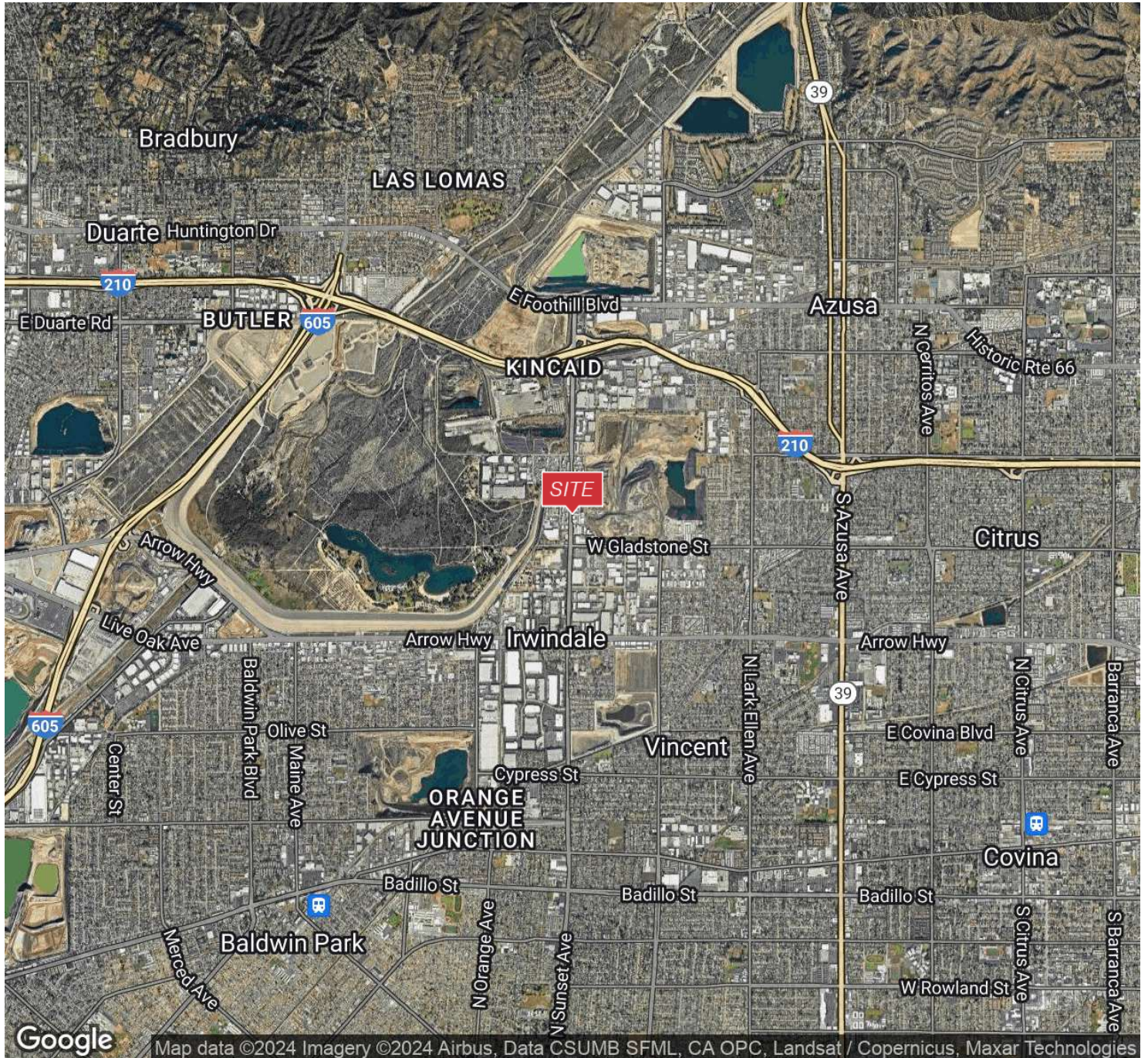
No warranty, express or implied, is made as to the accuracy of the information contained herein. This information is submitted subject to errors, omissions, change of price, rental or other conditions, withdrawal without notice, and is subject to any special listing conditions imposed by our principals. Cooperating brokers, buyers, tenants and other parties who receive this document should not rely on it, but should use it as a starting point of analysis, and should independently confirm the accuracy of the information contained herein through a due diligence review of the books, records, files and documents that constitute reliable sources of the information described herein. Logos are for identification purposes only and may be trademarks of their respective companies. NAI Capital Commercial, Inc. CAL DRE Lic. #02130474



Richard Lee, SIOR
Executive Vice President
310.600.8888
rlee@naicapital.com
CA DRE #01757870

Nicholas Chang, CCIM, SIOR
Executive Vice President
949.375.2310
nchang@naicapital.com
CA DRE #01344844

No warranty, express or implied, is made as to the accuracy of the information contained herein. This information is submitted subject to errors, omissions, change of price, rental or other conditions, withdrawal without notice, and is subject to any special listing conditions imposed by our principals. Cooperating brokers, buyers, tenants and other parties who receive this document should not rely on it, but should use it as a starting point of analysis, and should independently confirm the accuracy of the information contained herein through a due diligence review of the books, records, files and documents that constitute reliable sources of the information described herein. Logos are for identification purposes only and may be trademarks of their respective companies. NAI Capital Commercial, Inc. CAL DRE Lic. #02130474



Richard Lee, SIOR
Executive Vice President
310.600.8888
rlee@naicapital.com
CA DRE #01757870

Nicholas Chang, CCIM, SIOR
Executive Vice President
949.375.2310
nchang@naicapital.com
CA DRE #01344844

No warranty, express or implied, is made as to the accuracy of the information contained herein. This information is submitted subject to errors, omissions, change of price, rental or other conditions, withdrawal without notice, and is subject to any special listing conditions imposed by our principals. Cooperating brokers, buyers, tenants and other parties who receive this document should not rely on it, but should use it as a starting point of analysis, and should independently confirm the accuracy of the information contained herein through a due diligence review of the books, records, files and documents that constitute reliable sources of the information described herein. Logos are for identification purposes only and may be trademarks of their respective companies. NAI Capital Commercial, Inc. CAL DRE Lic. #02130474