

For Sale

cresa

Industrial Office/Flex Building or Redevelopment Opportunity

800 N Progress Drive

Saukville, WI 53080

Property Snapshot

Land Size	4.94 Acres	Outside Storage	~3.7 Acres
Building Size	8,852 SF	Main Level	3 Private offices 3 Conference rooms Kitchenette Open Areas
Stories	1	Lower Level	Training Room Storage Room Open Areas
Year Built	1994		
Zoning	M-2 General Manufacturing		
Parking	20 Surface Spaces		
Asking Price	\$425,000		

Property Notes:

The facility at 800 N. Progress Drive is an 8,852 square foot single-tenant office building situated on a 4.94-acre parcel, owned by Cardinal Logistics Management Corporation.

Located in the Saukville Industrial Park, it offers convenient access to I-43 via Highway 33, making it an attractive option for businesses needing logistical efficiency and visibility in the area.

The ample land area also provides opportunities for outside storage, expansion, or additional development.

For More Information:



Tim Ridders

608.669.4153
tridders@cresa.com



Allison Thompson

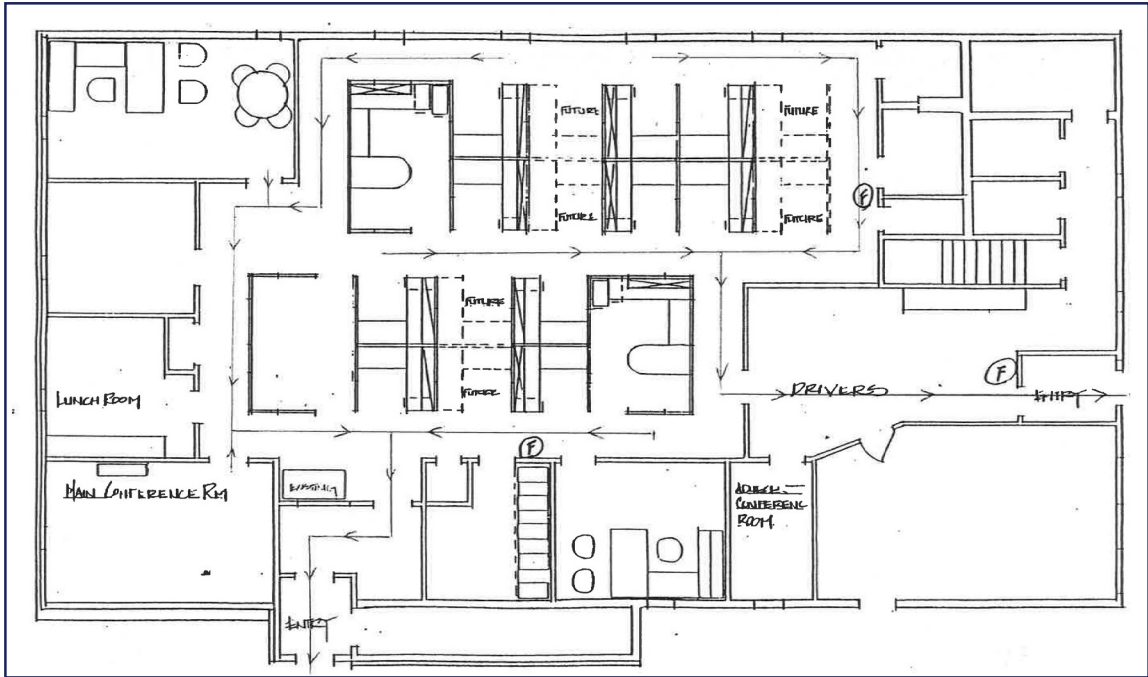
608.219.0400
amthompson@cresa.com

Cresa Madison

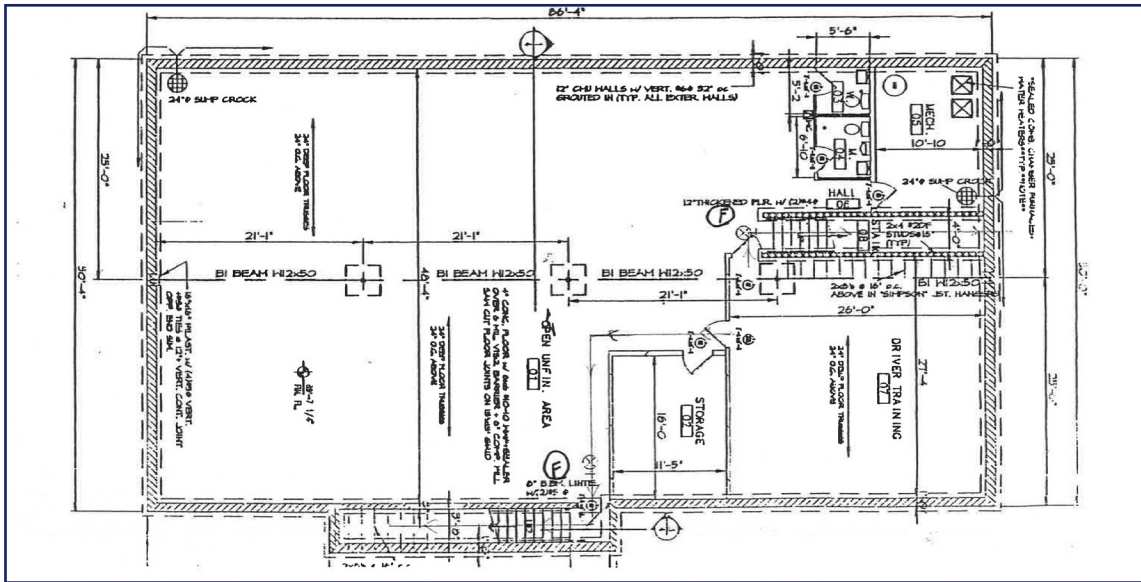
613 Williamson Street, 210
Madison WI 53703

Building Floorplans

Main Level - 4,426 SF



Lower Level- 4,426 SF



For More Information:

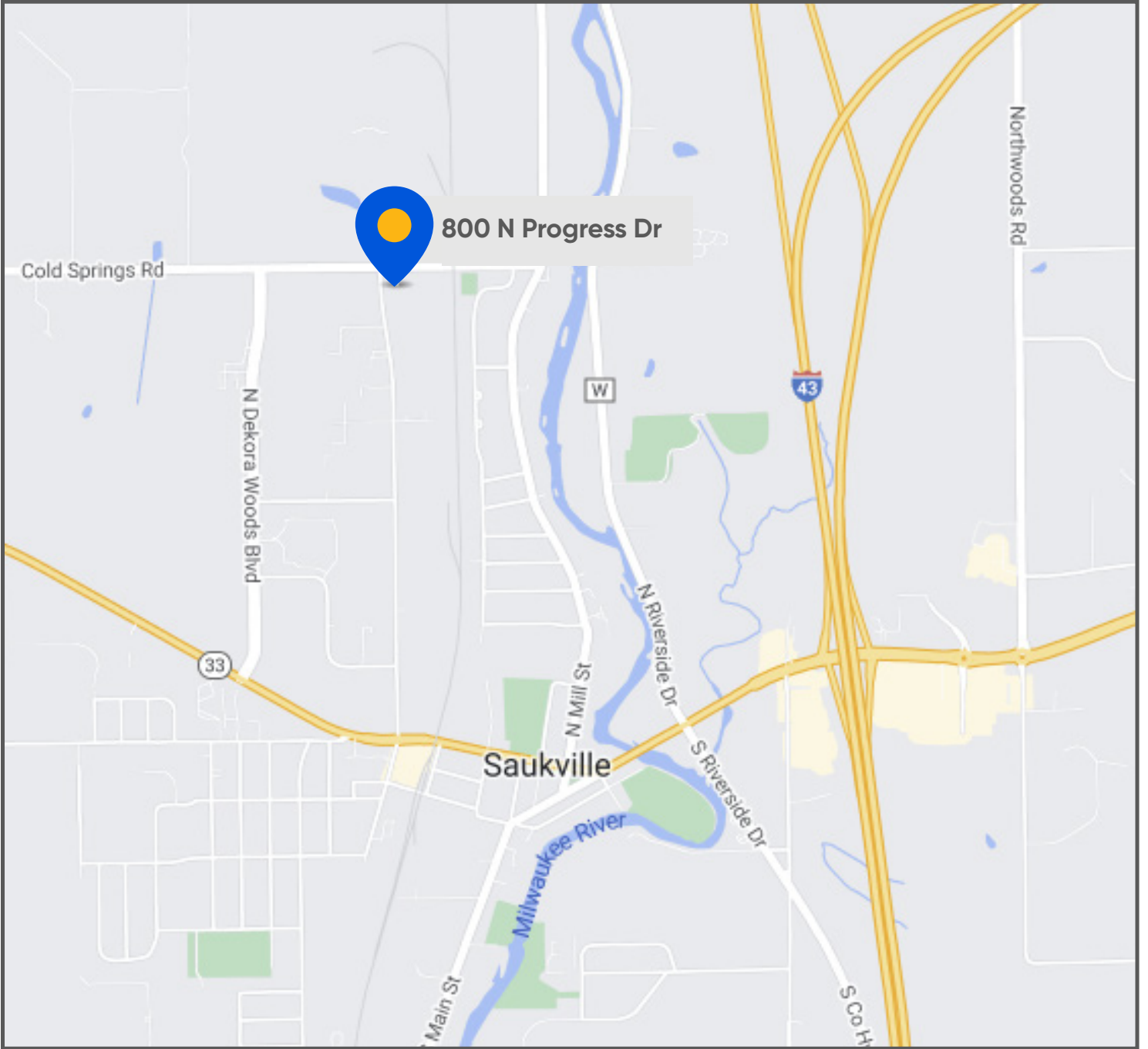


Tim Rikers
608.669.4153
trickers@cresa.com



Allison Thompson
608.219.0400
amthompson@cresa.com

Map



For More Information:

	<p>Tim Ridders 608.669.4153 trickers@cresa.com</p>		<p>Allison Thompson 608.219.0400 amthompson@cresa.com</p>
--	---	--	--