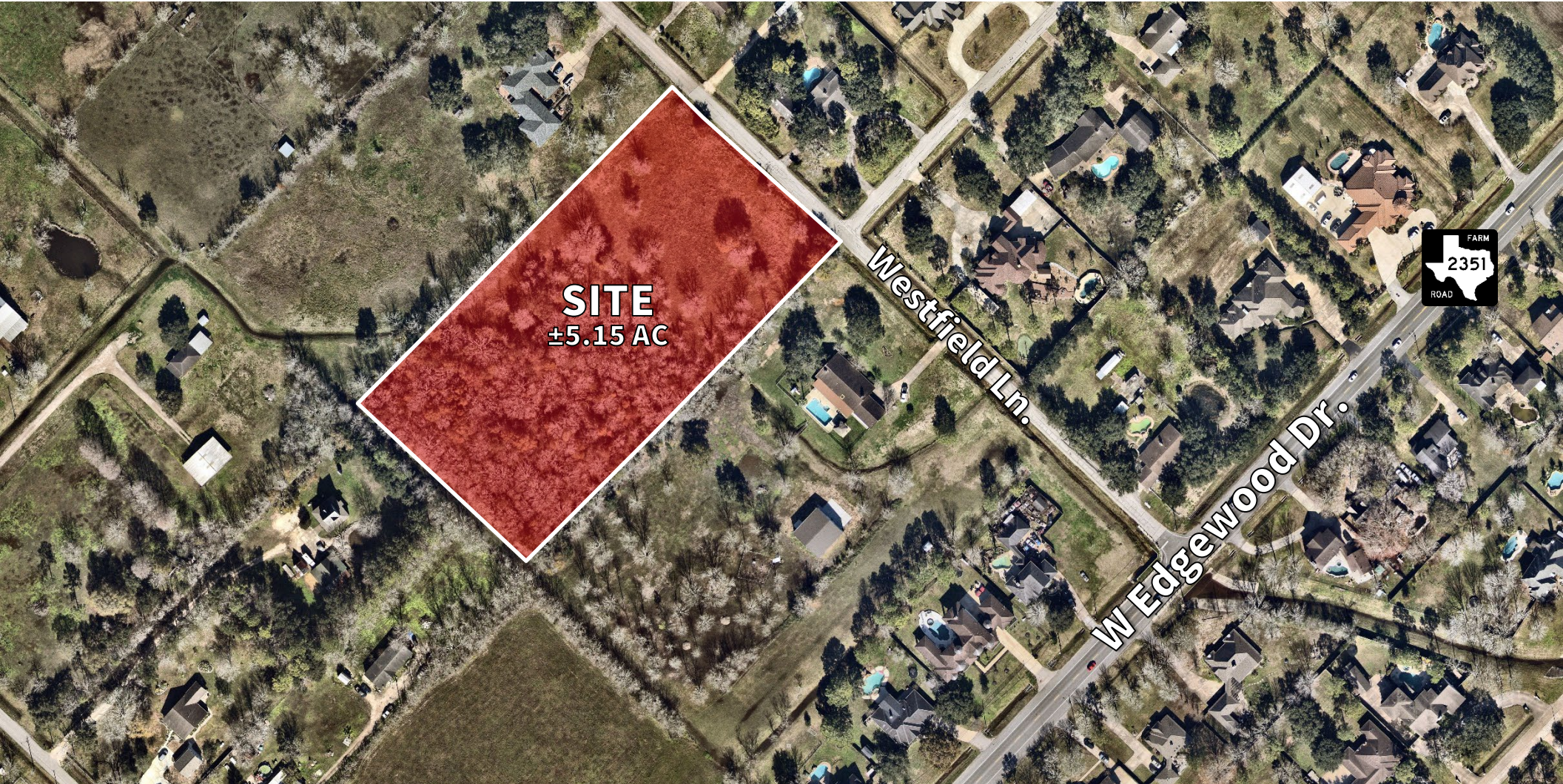


LAND FOR SALE **+5.15 AC**



NWQ FM 2351 & WESTFIELD LN. | FRIENDSWOOD, TX 77546

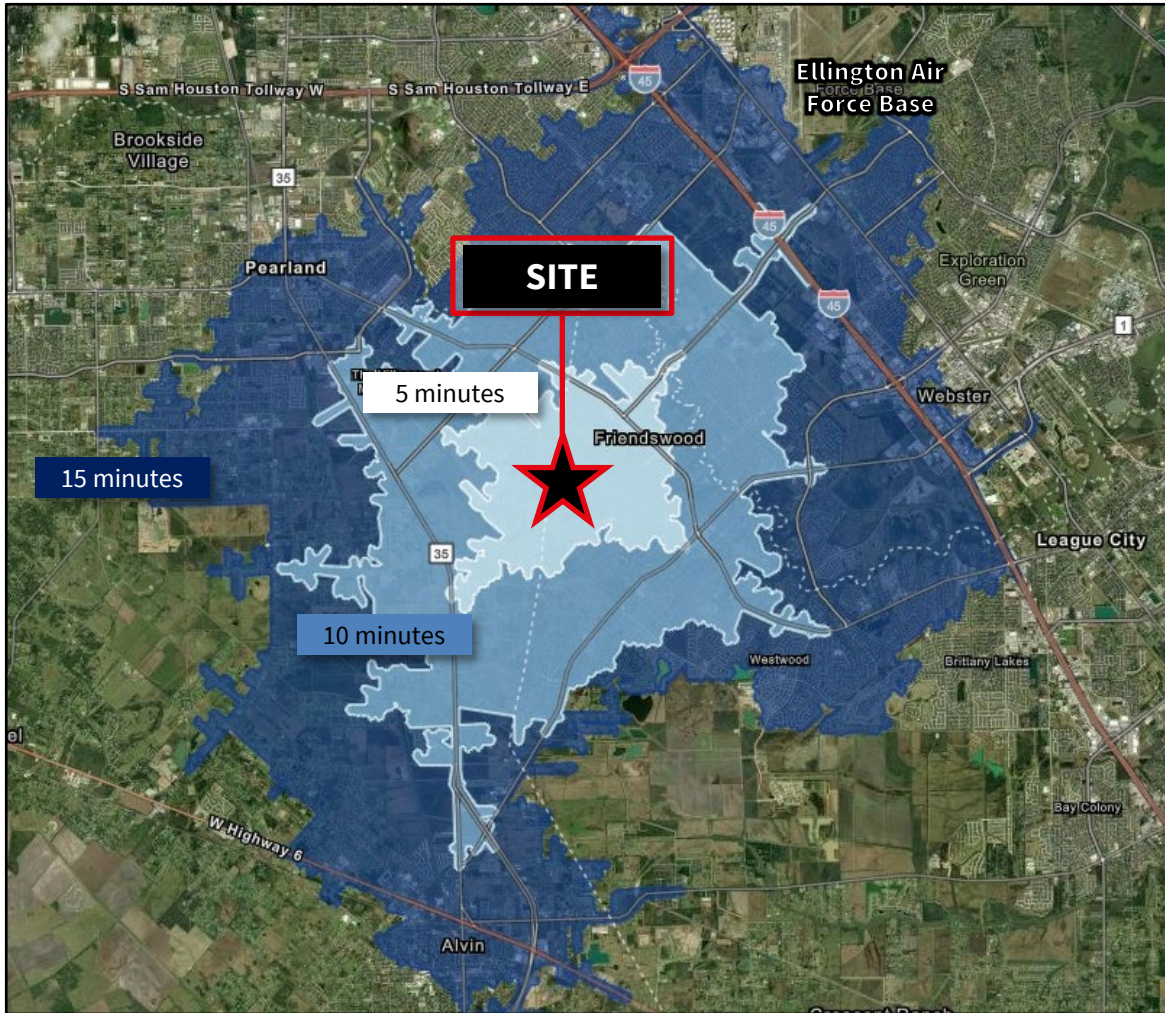


Simmi Jaggi
EVP, Managing Director
+1 713 888 4048
simmi.jaggi@jll.com

Karina Weathers
Associate
+1 713 212 6702
karina.weathers@jll.com

AREA LOCATION

±5.15 AC | FM 2351 & WESTFIELD LN. | FRIENDSWOOD, TX 77546  2



Location

NWQ of 2351 and Westfield Ln in Friendswood, TX.

Size

±5.15 Acres

Site Details

- ±330' frontage on Westfield Ln.
- Onsite detention required
- Partially zoned Single Family Residential
- Frontage is located in Galveston County and remaining land is located in Brazoria County

Surrounding Area

Known for its friendly community, Friendswood offers a peaceful and family-oriented atmosphere. The city boasts well-maintained neighborhoods, excellent schools, and a strong sense of community pride. With its convenient access to major highways and proximity to both Houston and the Gulf of Mexico, residents of Friendswood enjoy a desirable blend of small-town living and urban amenities.

Pricing

Please contact broker for pricing



Demographics

Population Summary	1-Mile	3-Mile	5-Mile
2023 Population	4,945	54,753	157,880
2023 Median Age	42.6	40.6	36.9
Average Household Income	\$124,162	\$152,568	\$134,510
Average Home Value	\$372,553	\$362,437	\$331,372

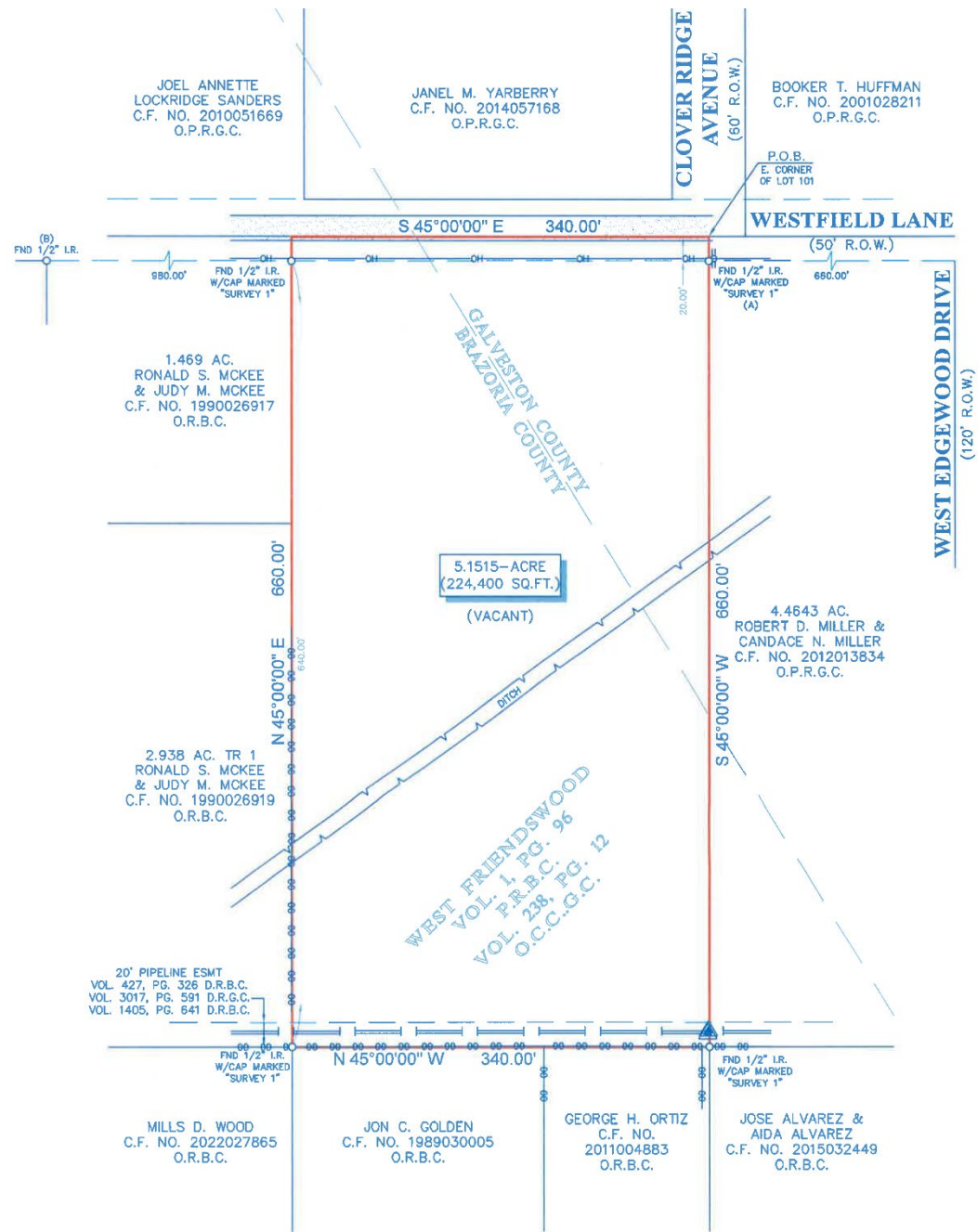


Drive Times

Locations	Minutes
The Center at Pearland Parkway	10
Baybrook Mall	12
William P. Hobby Airport (HOU)	20
Downtown Houston	30

PROPERTY SURVEY

+5.15 AC | FM 2351 & WESTFIELD LN. | FRIENDSWOOD, TX 77546



PROPERTY ZONING

±5.15 AC | FM 2351 & WESTFIELD LN. | FRIENDSWOOD, TX 77546



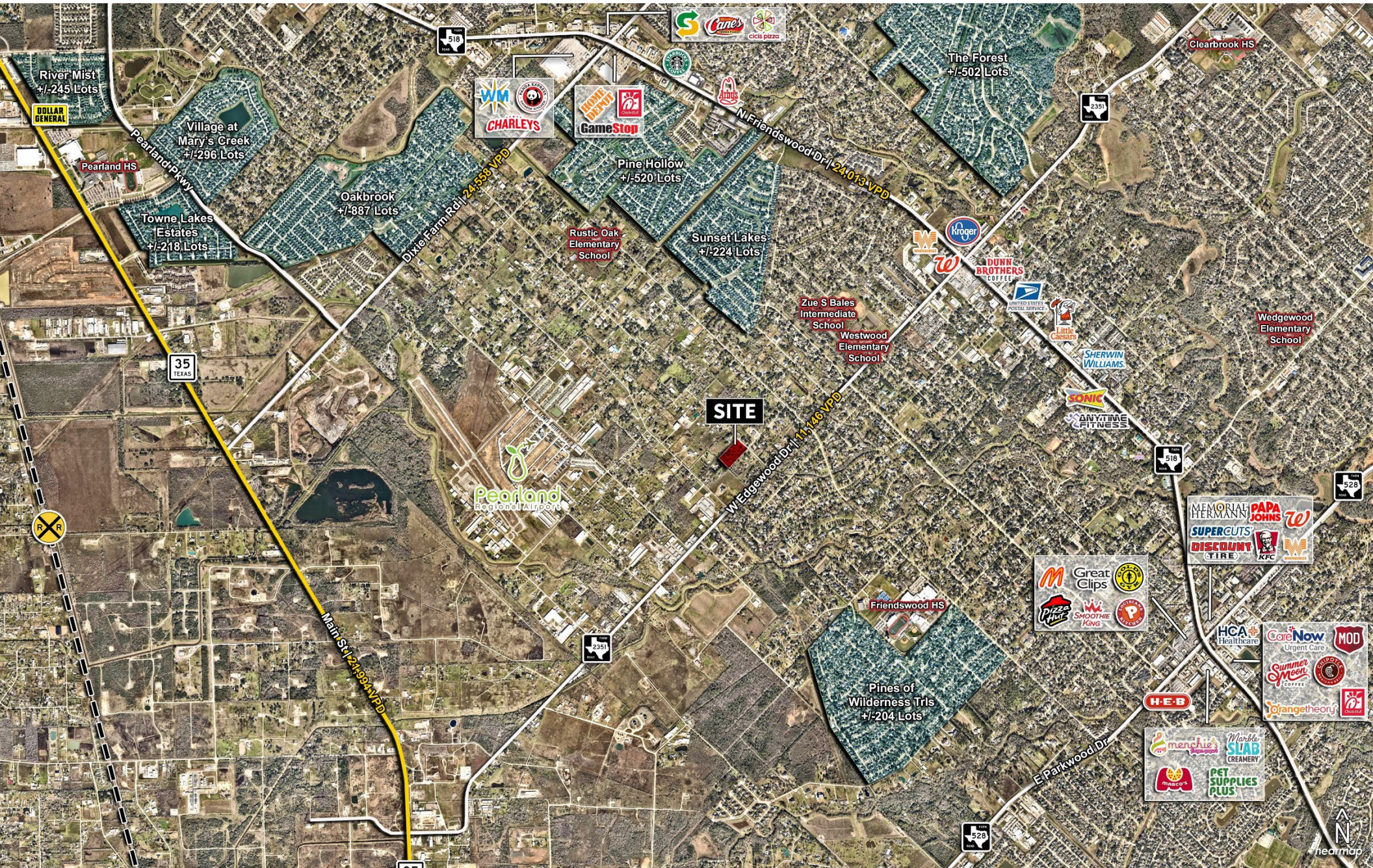
Zoning by Parcels

Legend	Opacity
A1	
BP	
CSC	
DD	
I	
LI	
GHD	
MFR-H	
MFR-L	
MFR-M	
MHR	
NC	
NO ZONING	
OPD	
PUD	
SFR	
SFR-E	



PROPERTY AERIAL

±5.15 AC | FM 2351 & WESTFIELD LN. | FRIENDSWOOD, TX 77546



Although information has been obtained from sources deemed reliable, JLL does not make any guarantees, warranties or representations, express or implied, as to the completeness or accuracy as to the information contained herein. Any projections, opinions, assumptions or estimates used are for example only. There may be differences between projected and actual results, and those differences may be material. JLL does not accept any liability for any loss or damage suffered by any party resulting from reliance on this information. If the recipient of this information has signed a confidentiality agreement with JLL regarding this matter, this information is subject to the terms of that agreement. ©2024 Jones Lang LaSalle IP, Inc. All rights reserved.