

5340 SOUTH QUEBEC STREET | GREENWOOD VILLAGE, CO 80111



Greenwood Place

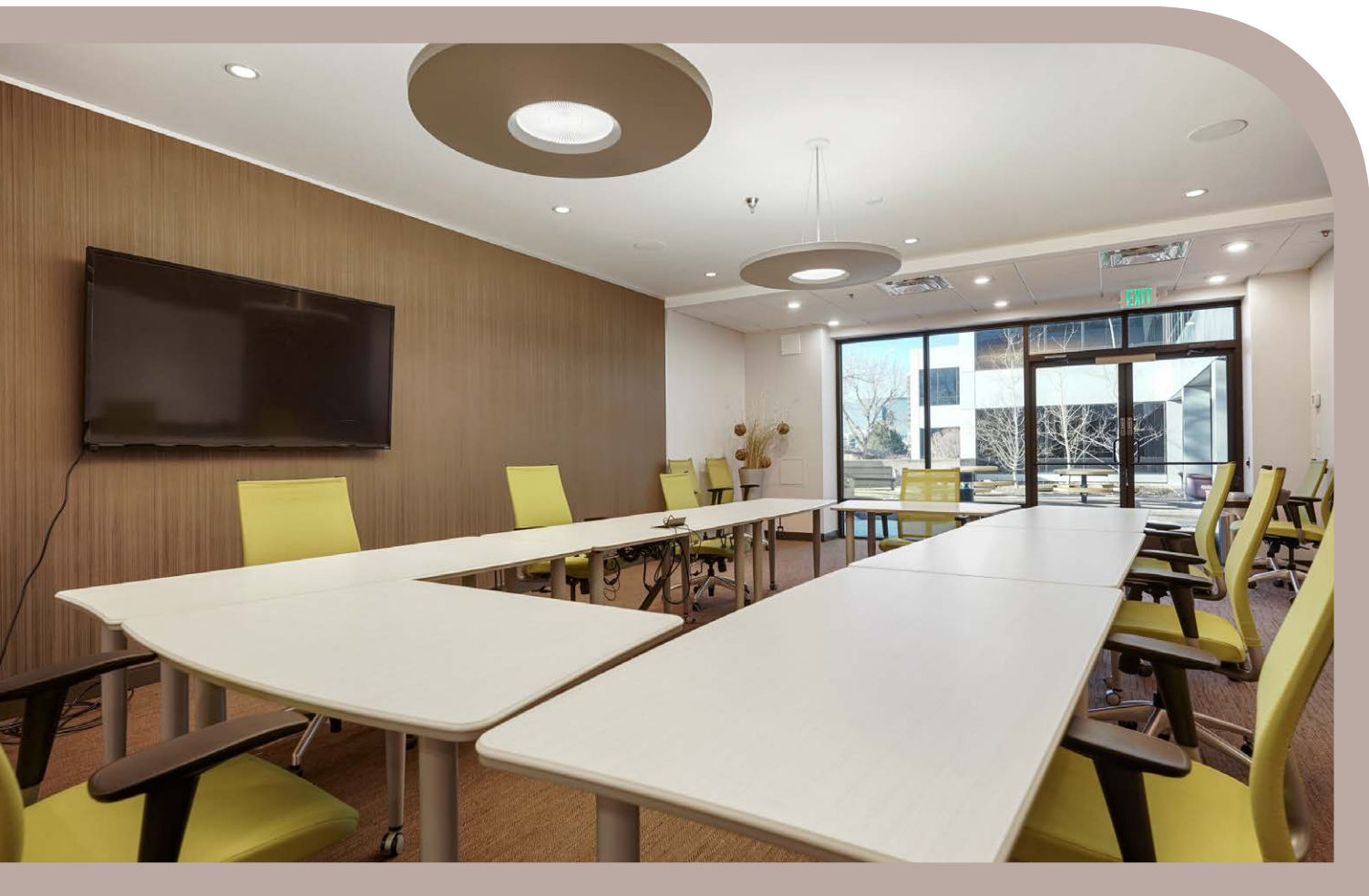


ZACHARY T. WILLIAMS
303.813.6474
zach.williams@cushwake.com

W. RYAN STOUT
303.813.6448
ryan.stout@cushwake.com

NATHAN J. BRADLEY
303.813.6444
nate.bradley@cushwake.com





Move-In Ready Spaces

3-story, 73,429 SF office building with spec suites ready for immediate occupancy and secure 24-hour key card access

Connected & Convenient

Steps from The Landmark's retail and dining, with seamless access to I-25, I-225, and Belleview Avenue



5340 SOUTH QUEBEC STREET | GREENWOOD VILLAGE, CO 80111

work where balance Comes Naturally

At Greenwood Place, work feels effortless. Surrounded by mountain views and fresh air, this thoughtfully designed environment brings calm to your workday. Flexible spaces, refined interiors, and wellness-driven amenities create the ideal balance between productivity and peace — a place where focus and comfort coexist.

Wellness-Inspired Amenities

Recharge in the fitness center, collaborate in the tenant lounge, or unwind in the outdoor pavilion



Views That Refresh

Expansive mountain vistas and outdoor spaces bring calm and inspiration to your workday



designed for the way You Work



Easy Access to Belleview Ave.,
E. Orchard Rd., I-25 & I-225



Outdoor Pavilion with Seating



Tenant Lounge



252 Free Surface Spaces



Common Conference Room



Scenic Mountain Views



Fitness Center with
Showers & Lockers



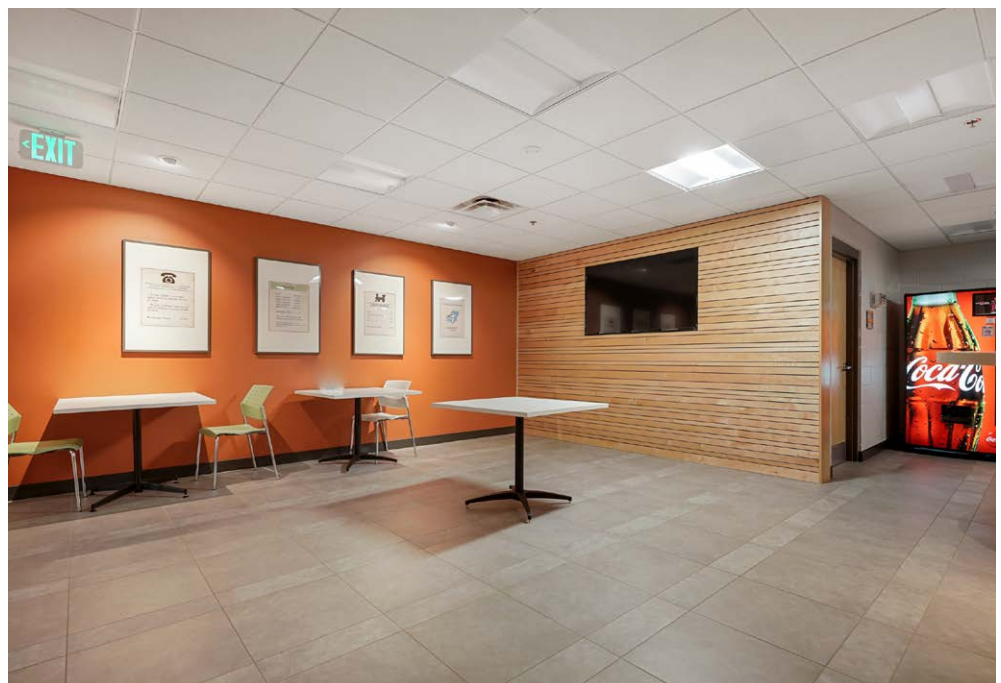
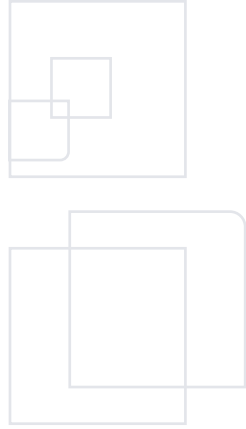
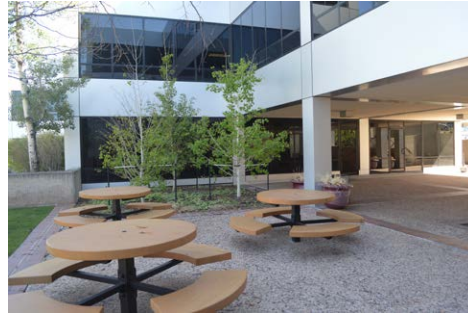
Monument Signage Available



24-Hour Key Card
Access & Security



5340 SOUTH QUEBEC STREET | GREENWOOD VILLAGE, CO 80111





step out. explore.

Recharge.



INTERSTATE
25

INTERSTATE
225




Greenwood
Place



S Quebec Street

Colorado



CLUB GREENWOOD



DOUBLETREE
BY HILTON

E. Orchard Road

5340 SOUTH QUEBEC STREET | GREENWOOD VILLAGE, CO 80111



An aerial photograph of the Denver Tech Center area. A white pin marker with the number '2' is located in the upper left quadrant. A black banner with white text reads 'DENVER TECH CENTER'. In the lower left, there is a circular icon containing a train symbol and the letters 'RTD'. Next to it, another black banner with white text reads 'ORCHARD LIGHT RAIL STATION'. To the right of the station, a highway shield sign for Interstate 25 is visible. The background shows a dense urban landscape with various buildings, roads, and green spaces under a clear sky. A north arrow is positioned in the bottom right corner.

INTERSTATE
225



INTERSTATE
25

9. Barre
10. Frozen Matter
11. Orangetheory
12. Waxing the City
13. Midici Pizza Napoletana
14. Tap Burger
15. Le French

6. The Original Pancake House
7. Bara Sushi & Grill
8. Chipotle
9. Larkburger

5. Cyclebar
6. Hapa Sushi Grill & Sake Bar
7. Yanni's Greek Cuisine
8. Early Bird Restaurant



5340 SOUTH QUEBEC STREET | GREENWOOD VILLAGE, CO 80111



Greenwood Place

ZACHARY T. WILLIAMS

303.813.6474

zach.williams@cushwake.com

W. RYAN STOUT

303.813.6448

ryan.stout@cushwake.com

NATHAN J. BRADLEY

303.813.6444

nate.bradley@cushwake.com



**CUSHMAN &
WAKEFIELD**

©2025 Cushman & Wakefield. All rights reserved. The information contained in this communication is strictly confidential. This information has been obtained from sources believed to be reliable but has not been verified. NO WARRANTY OR REPRESENTATION, EXPRESS OR IMPLIED, IS MADE AS TO THE CONDITION OF THE PROPERTY (OR PROPERTIES) REFERENCED HEREIN OR AS TO THE ACCURACY OR COMPLETENESS OF THE INFORMATION CONTAINED HEREIN, AND SAME IS SUBMITTED SUBJECT TO ERRORS, OMISSIONS, CHANGE OF PRICE, RENTAL OR OTHER CONDITIONS, WITHDRAWAL WITHOUT NOTICE, AND TO ANY SPECIAL LISTING CONDITIONS IMPOSED BY THE PROPERTY OWNER(S). ANY PROJECTIONS, OPINIONS OR ESTIMATES ARE SUBJECT TO UNCERTAINTY AND DO NOT SIGNIFY CURRENT OR FUTURE PROPERTY PERFORMANCE.
COE-PM-West-11.20.2025