



Remodeled
Office Building
For Sale

2324 Cheek Sparger Rd., Bedford, TX 76021



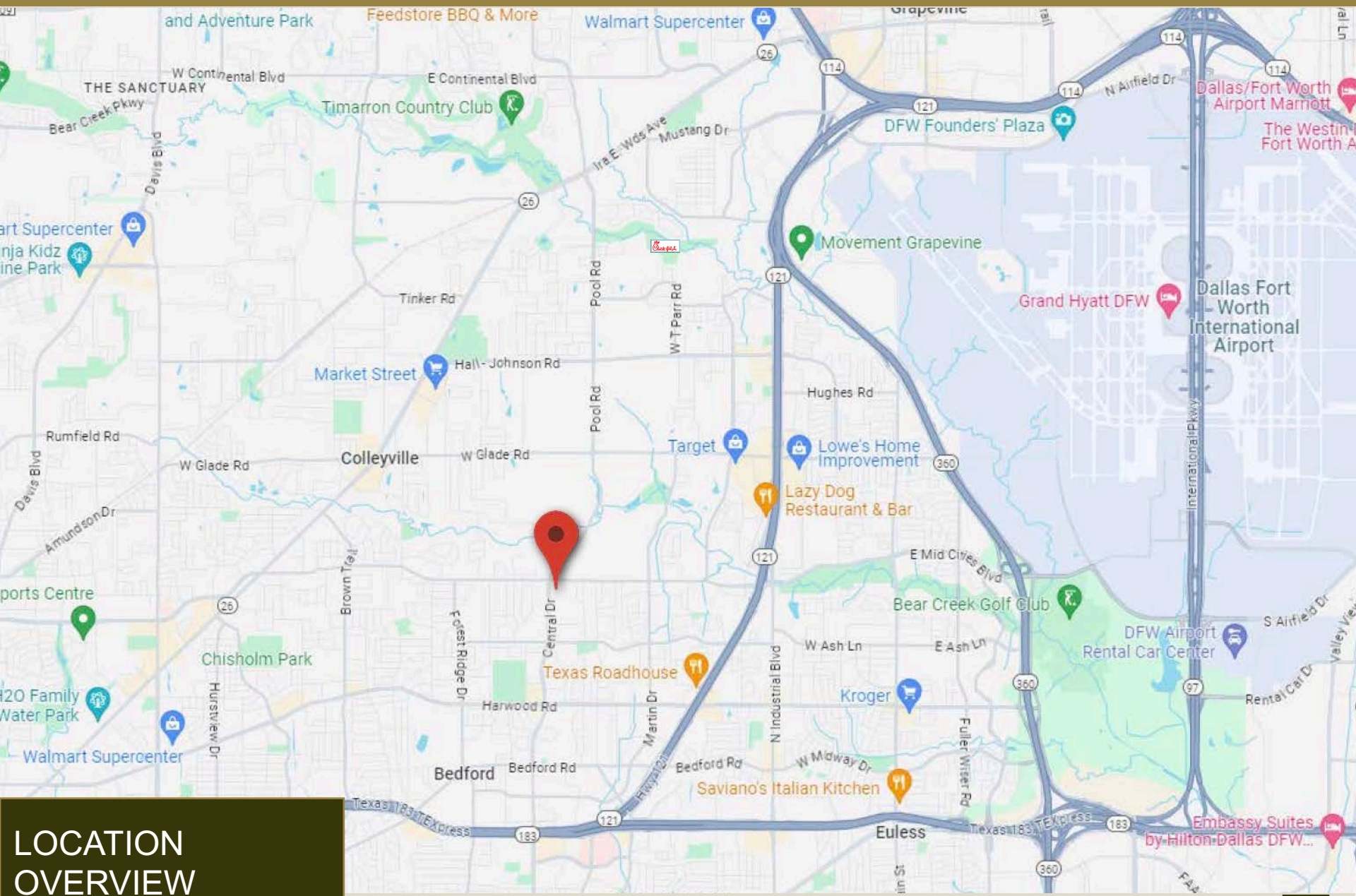
PROPERTY HIGHLIGHTS

- Perfect for Owner User or Investment
- Covered Parking and Outdoor Deck
- Excellent Location in High Demographic Area
- Monument Signage on Cheek-Sparger Road



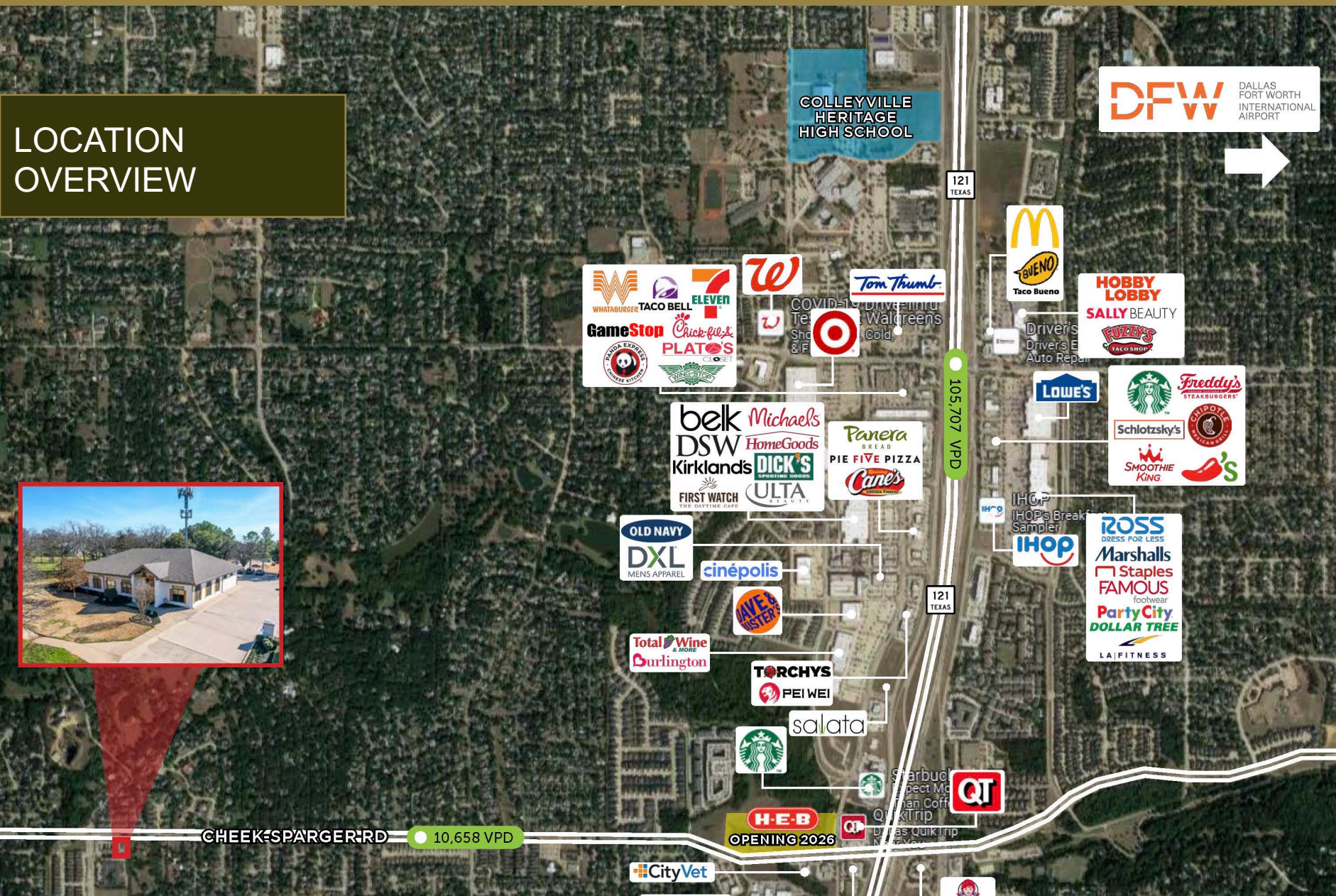
PROPERTY HIGHLIGHTS	
Address	2324 Cheek Sparger Rd. Bedford, TX 76021
Space Available	1,175 SF up to 5,777
Year Built	1997
Zoning	Commercial Office Zoning
Building Size And Acreage	5,777 SF Professional Office Building on 0.63 Acres
Great Location	Centrally located Property sits on major thoroughfare Cheek Sparger Rd. (10,658 VPD) off State Hwy 121 that offers ease of access to DFW Airport
Rent Rate	\$17/SF plus NNN
Site Highlights	<ul style="list-style-type: none">• Professional Office Space• Covered Parking Available• Newly Remodeled• Monument Signage on Cheek-Sparger• 1.5 Miles from 121 Freeway• Near Cheek-Sparger & Central Drive
Excellent Demographics	Primed to serve Bedford's and Colleyville's affluent, rapidly growing community with households boasting an average over 2x the national average at \$140,208
Parking	Plenty Surface Parking Spaces available and covered parking as well





LOCATION OVERVIEW

LOCATION OVERVIEW

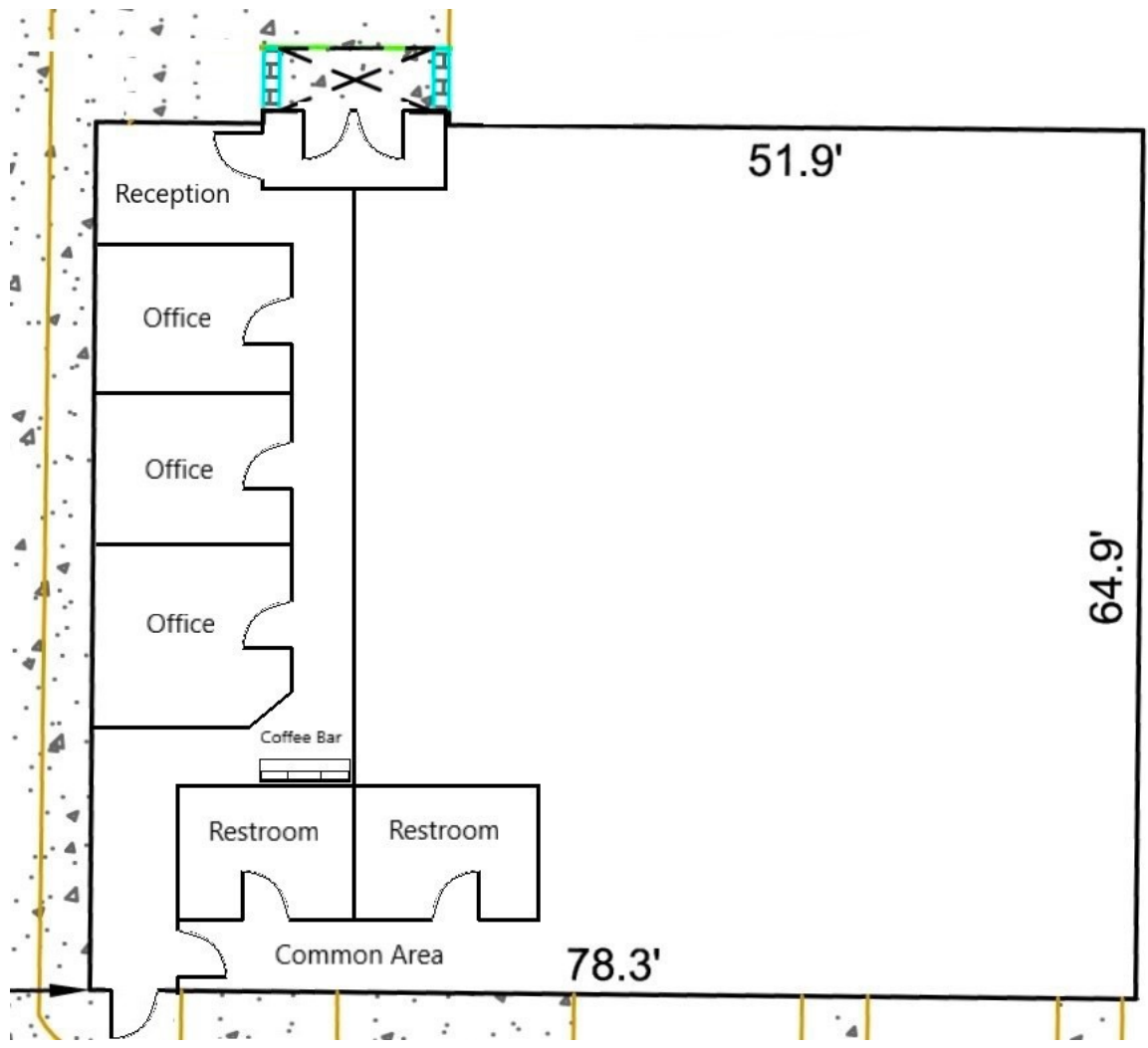




LOCATION OVERVIEW

FLOOR PLAN







CONTACT INFORMATION



PAUL BLIGHT

Partner

C: 214.682.7192

O: 214.637.4300

pblight@glaciercommercial.com



STACEY YEARIAN

Vice President

C: 618.530.3550

O: 214.637.4300

yearian@glaciercommercial.com

2324 Cheek Sparger Rd., Bedford, TX 76021 | Office Building For Sale



glaciercommercial.com

©2025 Glacier Commercial Realty L.P.

All rights reserved. The information contained herein was obtained from sources believed to be reliable. It is subject to verification. The presentation of this property is submitted subject to errors, omissions, change of price or conditions, prior to sale or lease, or withdrawal without notice.