

**NEW TO THE MARKET - PREVIOUSLY STARBUCKS**

# 219 FIRST AVENUE

NW Corner at 13th Street  
East Village, Manhattan, NY

**Retail Space**  
**1,168 SF For Lease**

**Contact**

**Gregory Gang**

[greg.gang@endurance-rea.com](mailto:greg.gang@endurance-rea.com)

646-662-3546



# SPACE DETAILS

## LOCATION

219 First Avenue  
NW Corner 13th Street  
Just one block from the L subway line

## GROUND FLOOR

Ground – 1,165 SF  
Basement (Storage only) – Approx 500 SF

## ASKING RENT

Upon Request

## FRONTAGE

21 FT of glass frontage on First Avenue  
27 FT of glass frontage on 13th Street

## CEILING HEIGHT

Ground – 9' 6"  
Basement – 7' 10"

## UTILITIES

Direct meter

## LEASE TERM

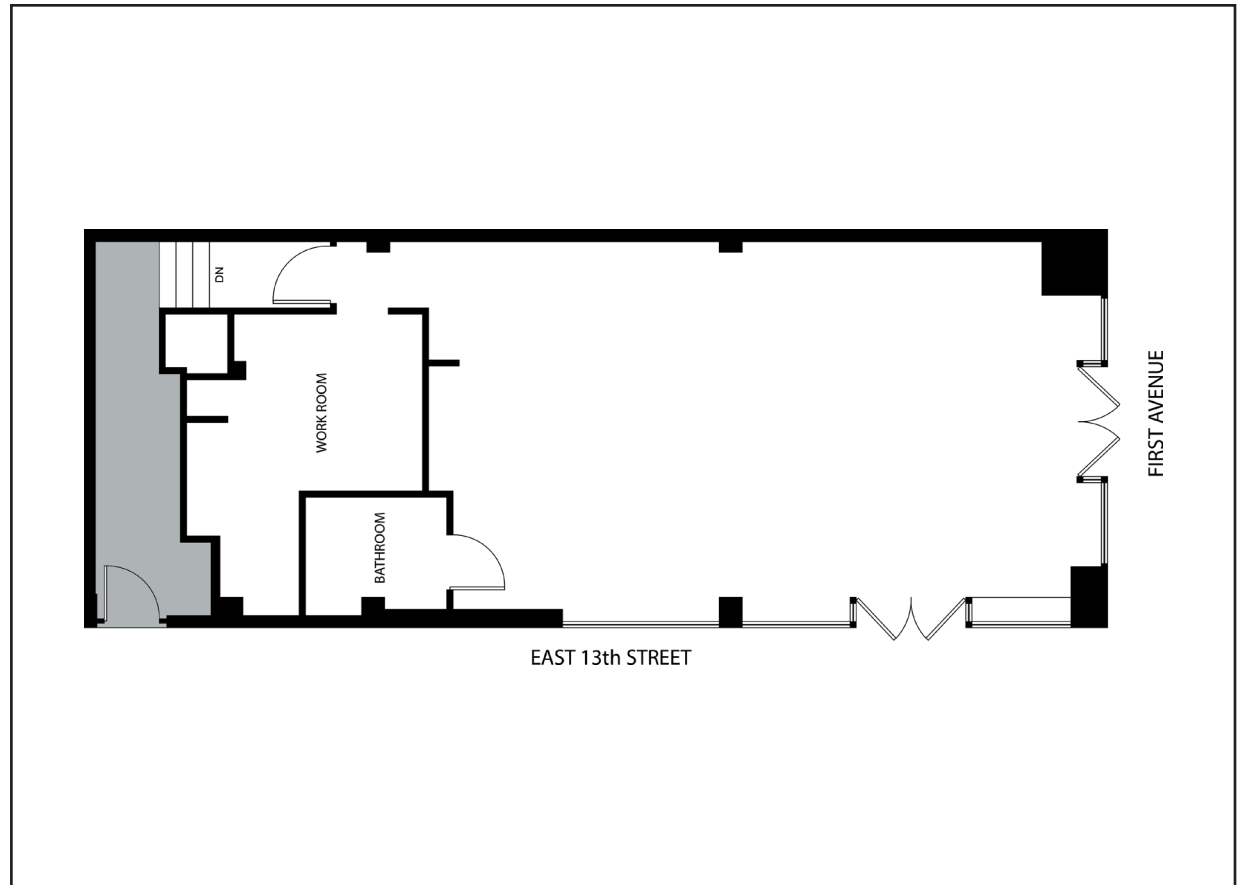
5 Years

## POSSESSION

1/1/2026

## Contact

**Gregory Gang**  
greg.gang@endurance-rea.com  
646-662-3546



## NEIGHBORS

Trader Joes, Whole Foods, Target, CVS, Chase Bank, The Ovens Slice, Fattoush Mediterranean, Mount Sinai-Urgent Care, Citi Bank, Panda Express and Wing Stop

## COMMENTS

- Previously Starbucks
- Built-out space featuring abundant prep and storage areas, handicap bathroom, central HVAC, and extensive plumbing and electric