

13240 – 13254 W STAR DRIVE
SHELBY TWP., MICHIGAN

INDUSTRIAL FOR LEASE
6,572 Square Feet Available

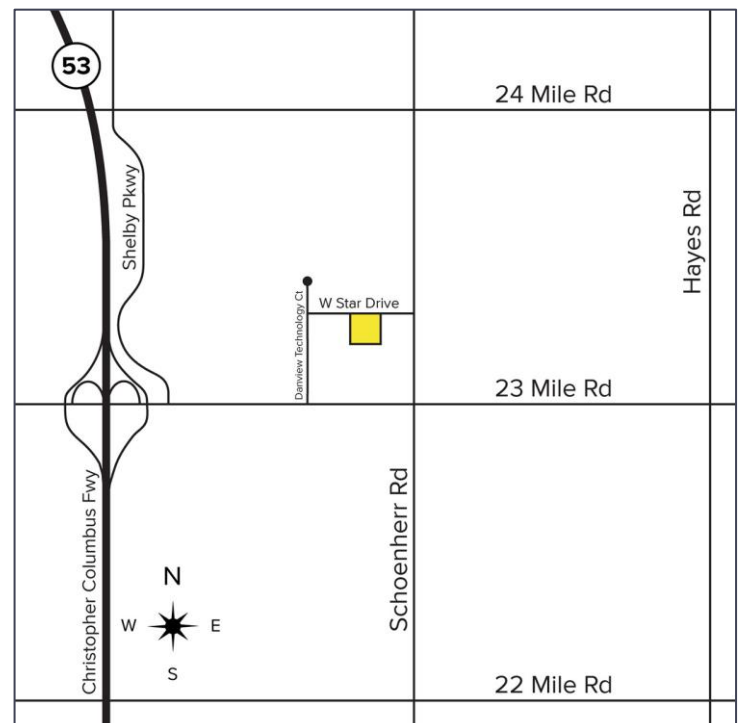


**SIGNATURE
ASSOCIATES**
KNOW SIGNATURE | KNOW RESULTS



PROPERTY FEATURES

- 6,572 square feet available
- 2,400 square feet office
- 19' clear height
- (1) 12' x 14' grade level door
- Clean, well-maintained industrial duplex
- LED / Motion / Radiant / Kitchenette / Great parking
- Taxes = \$1.39/sq. ft.
- Lease Rate: \$11.95/sq. ft. modified gross



For more information, please contact:

PAUL SAAD
(248) 359 0652

JOHN DROZE
(248) 948 4191

BEN WILKIEMEYER
(248) 359 0624

GRANT BRUCE
(248) 948 4188

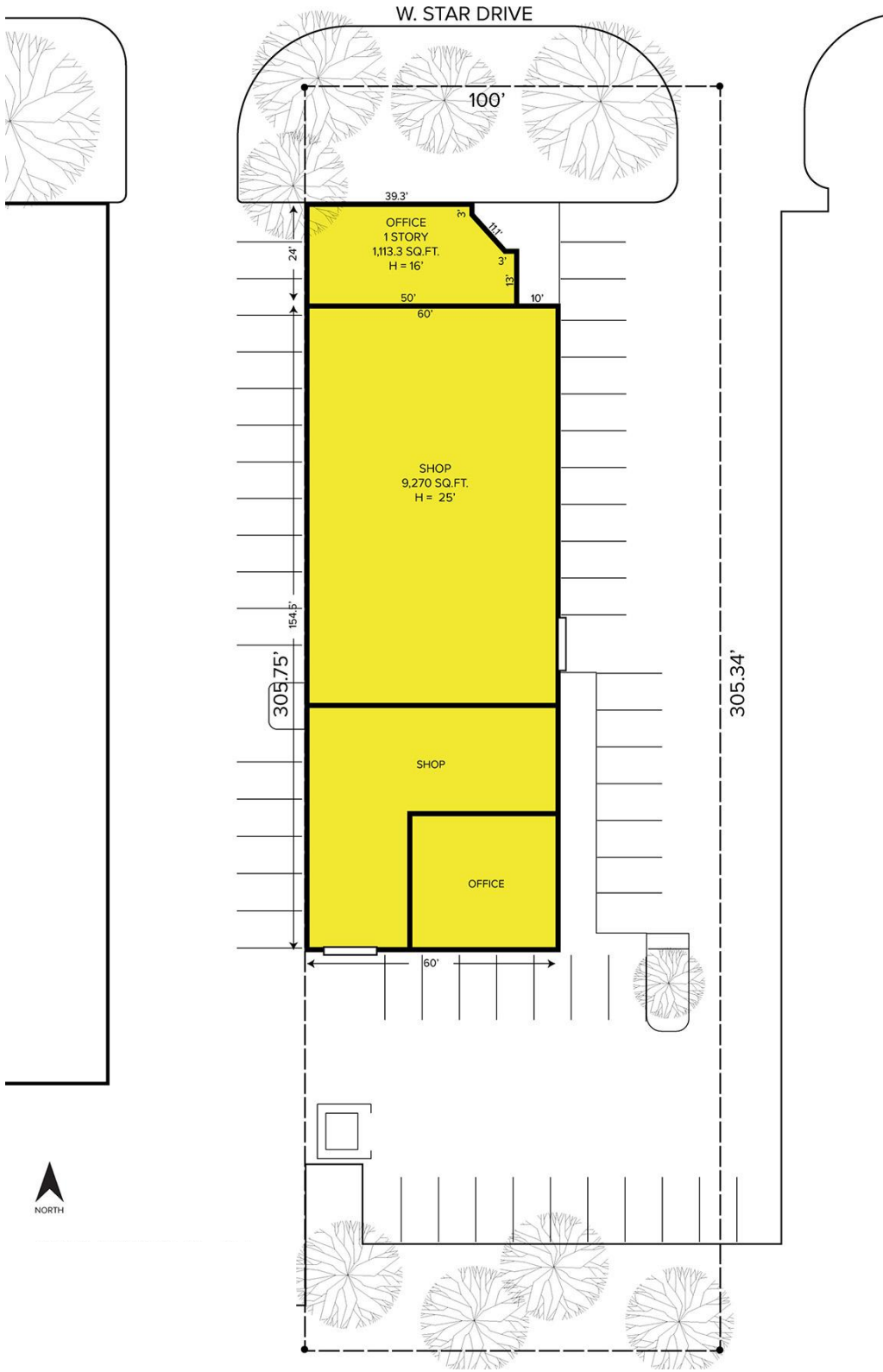
SIGNATURE ASSOCIATES
One Towne Square, Suite 1200
Southfield, MI 48076
www.signatureassociates.com

Information is subject to verification and no liability for errors or omissions is assumed. Price is subject to change and listing withdrawal.

13240 – 13254 W. Star Drive – Shelby Twp., Michigan
Industrial For Lease

6,572
Square Feet
AVAILABLE

Site Plan



For more information, please contact:

PAUL SAAD
(248) 359 0652

JOHN DROZE
(248) 948 4191

BEN WILKIEMEYER
(248) 359 0624

GRANT BRUCE
(248) 948 4188

SIGNATURE ASSOCIATES
One Towne Square, Suite 1200
Southfield, MI 48076
www.signatureassociates.com

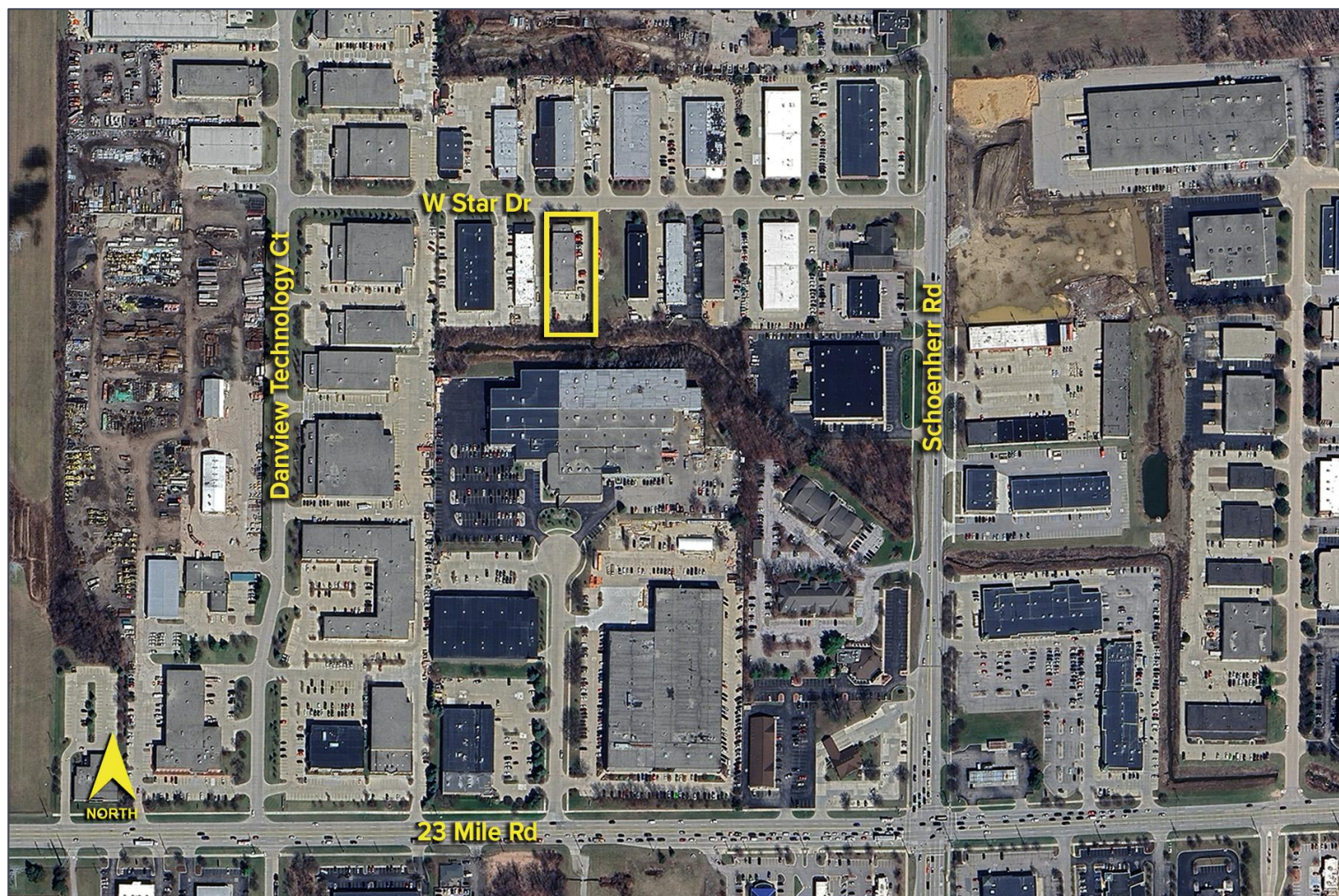
Information is subject to verification and no liability for errors or omissions is assumed. Price is subject to change and listing withdrawal.

13240 – 13254 W. Star Drive – Shelby Twp., Michigan

Industrial For Lease

6,572
Square Feet
AVAILABLE

Aerial



For more information, please contact:

PAUL SAAD
(248) 359 0652

JOHN DROZE
(248) 948 4191

BEN WILKIEMEYER
(248) 359 0624

GRANT BRUCE
(248) 948 4188

SIGNATURE ASSOCIATES
One Towne Centre, Suite 1200
One Towne Square, Suite 1200
Southfield, MI 48076
www.signatureassociates.com

Information is subject to verification and no liability for errors or omissions is assumed. Price is subject to change and listing withdrawal.