

FOR LEASE

~40,000SF WAREHOUSE &
2.8 ACRES AVAILABLE
TRAILER PARKING LOT

Contact Us:

Jordan Metz
Senior Vice President
973.493.0385
jordan@metzindustrial.com

Benito Abbate
Senior Associate
908.655.8331
ben@metzindustrial.com

James Friel
Sales Associate
908.305.9001
james@metzindustrial.com

320 ELIZABETH AVE
NEWARK NJ



**Bussel
Realty**

**Metz
Industrial Group**

Property Details

320 Elizabeth Ave, Newark NJ



Building Size
~40,000 SF



Ceiling Height
16' - 18'



Parking
2.8AC

- +/-2,200 SF Office
- 1,117 SF First Story Private Cargo Staging Area
- 2 Dedicated Docks, 6 Additional Shared Docks
- 16' - 18' Clear Height
- Two (2) Freight Elevators (2,500 lb, 7,500 lb)
- Ancillary 2.8AC Trailer Parking Available
 - Fully Lit Parcel
 - Secure Perimeter Fence



Jordan Metz
Senior Vice President
973.493.0385
jordan@metzindustrial.com

Benito Abbate
Senior Associate
908.655.8331
ben@metzindustrial.com

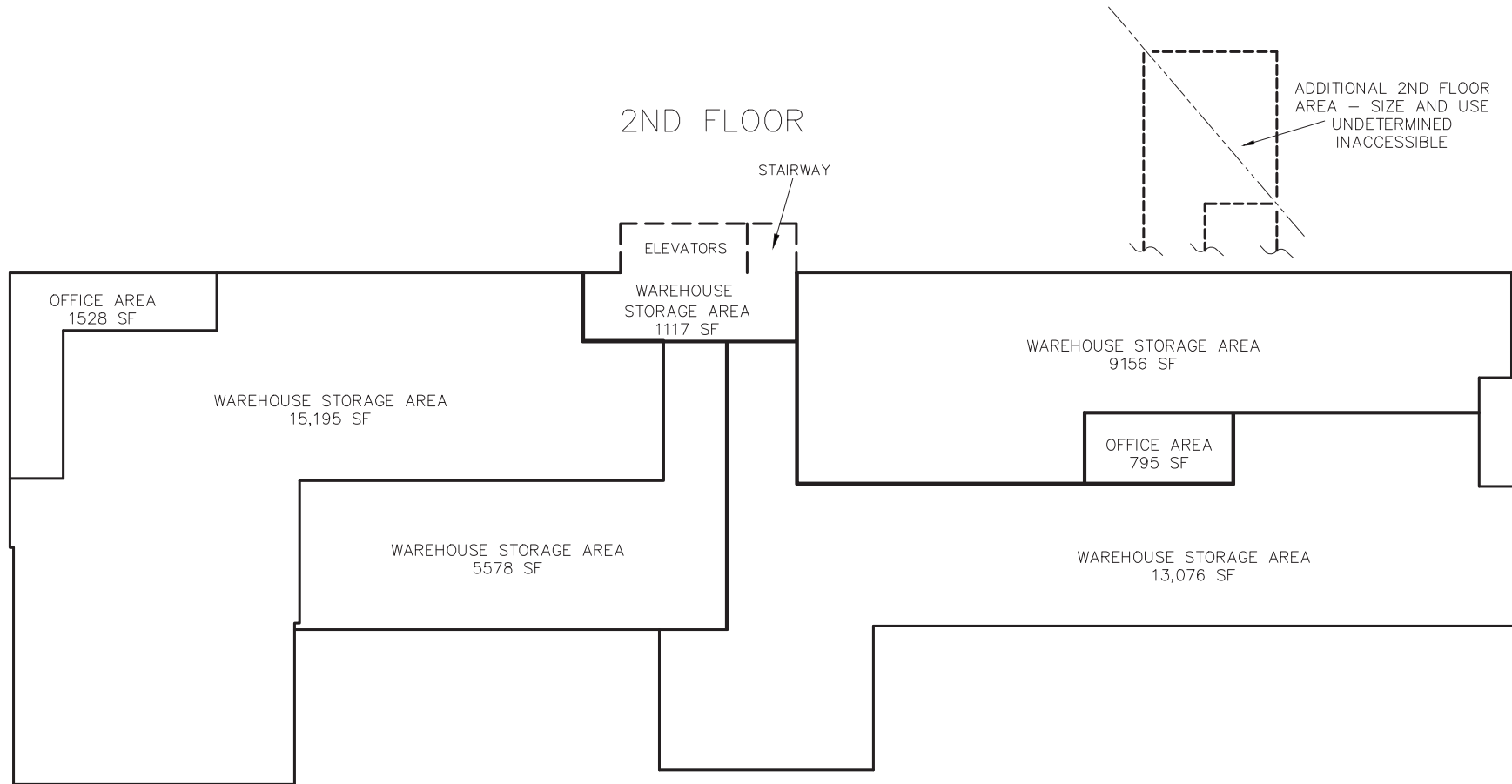
James Friel
Sales Associate
908.305.9001
james@metzindustrial.com



**Metz
Industrial Group**

Site Plan

320 Elizabeth Ave, Newark NJ



Jordan Metz
Senior Vice President
973.493.0385
jordan@metzindustrial.com

Benito Abbate
Senior Associate
908.655.8331
ben@metzindustrial.com

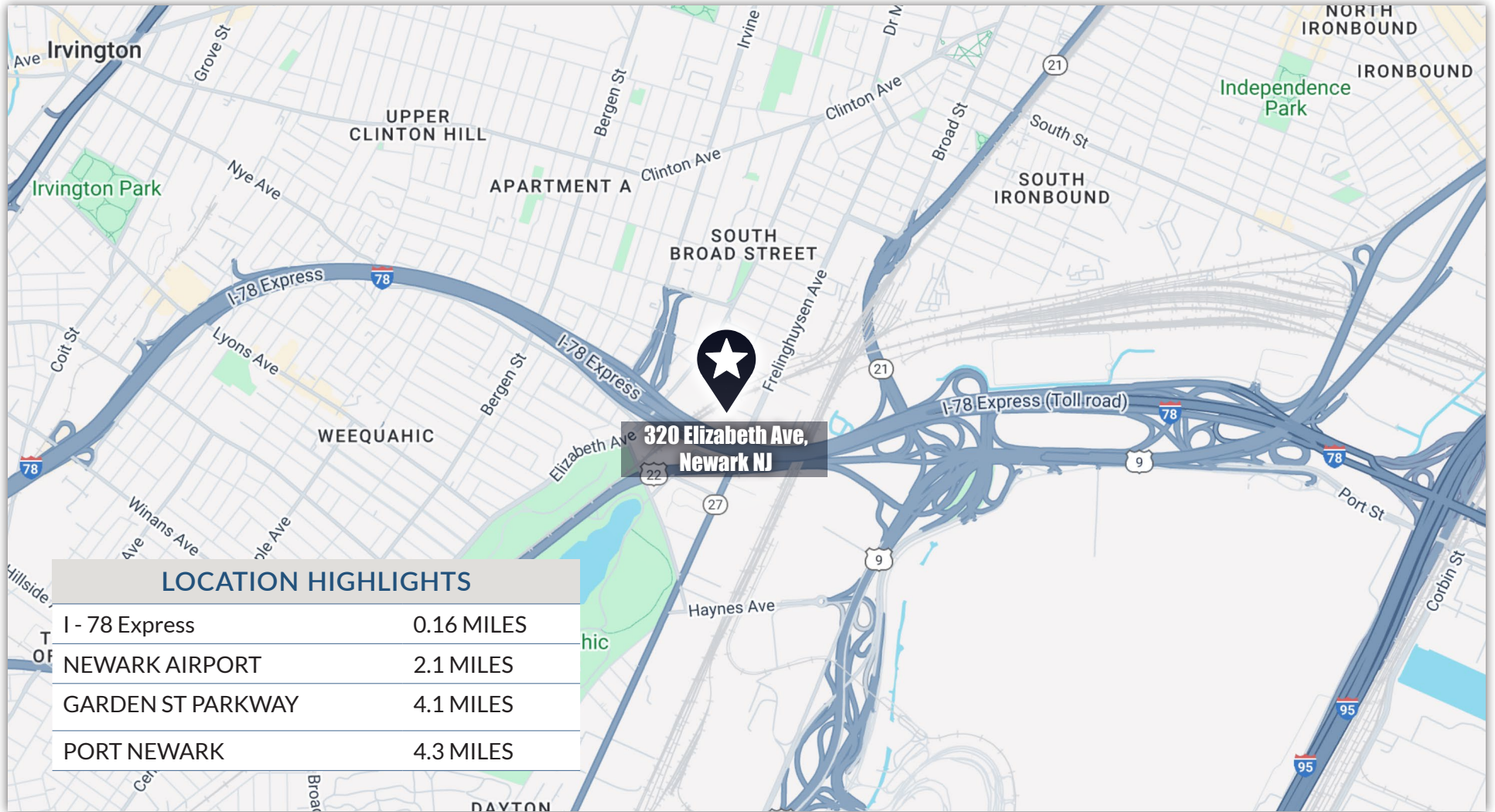
James Friel
Sales Associate
908.305.9001
james@metzindustrial.com



**Metz
Industrial Group**

LOCATION

320 Elizabeth Ave, Newark NJ



Jordan Metz
Senior Vice President
973.493.0385
jordan@metzindustrial.com

Benito Abbate
Senior Associate
908.655.8331
ben@metzindustrial.com

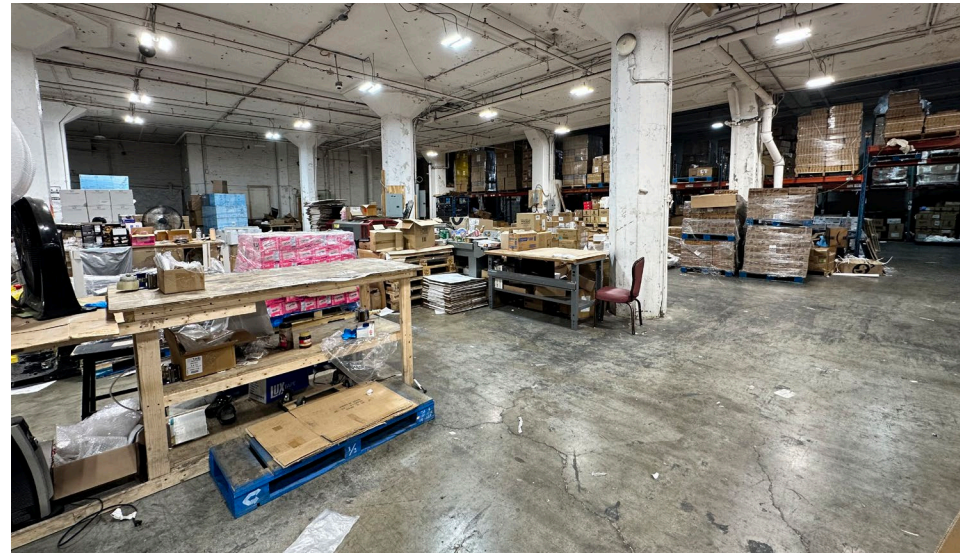
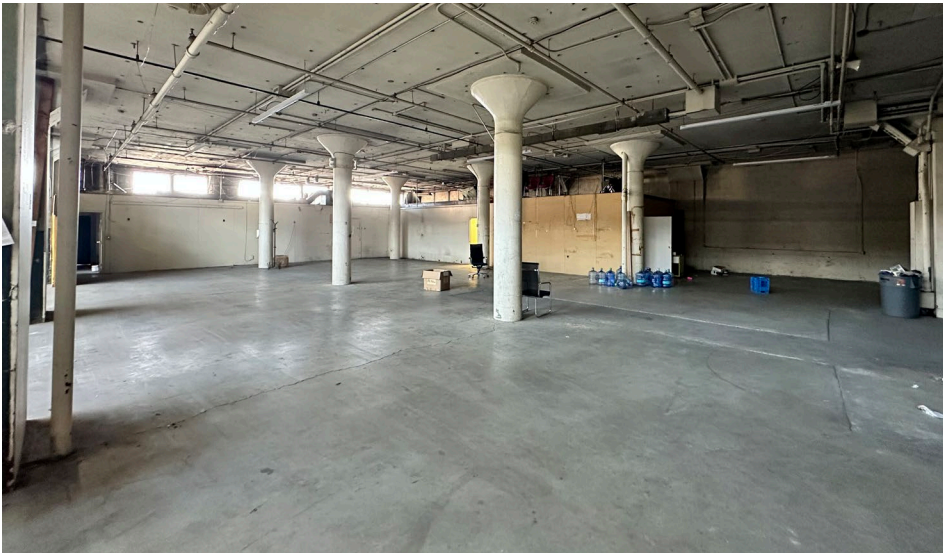
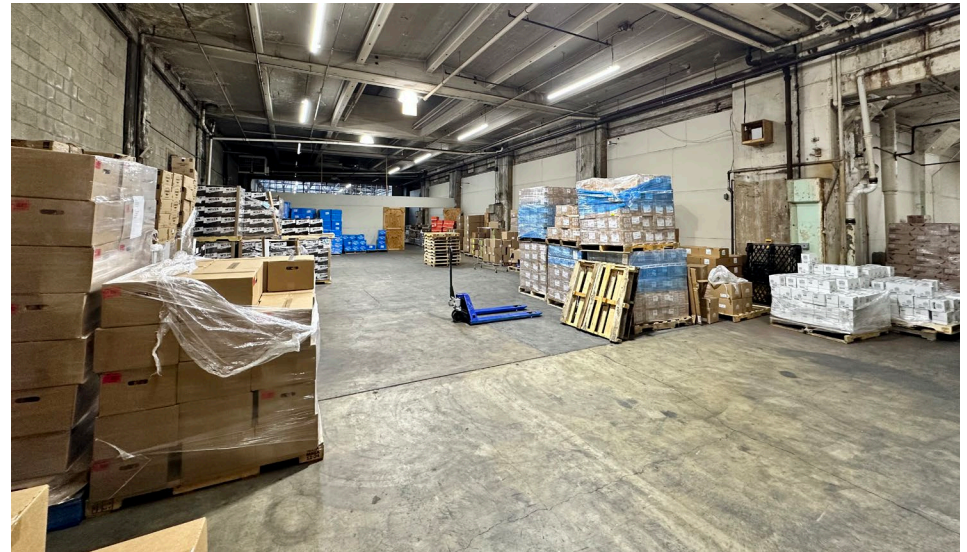
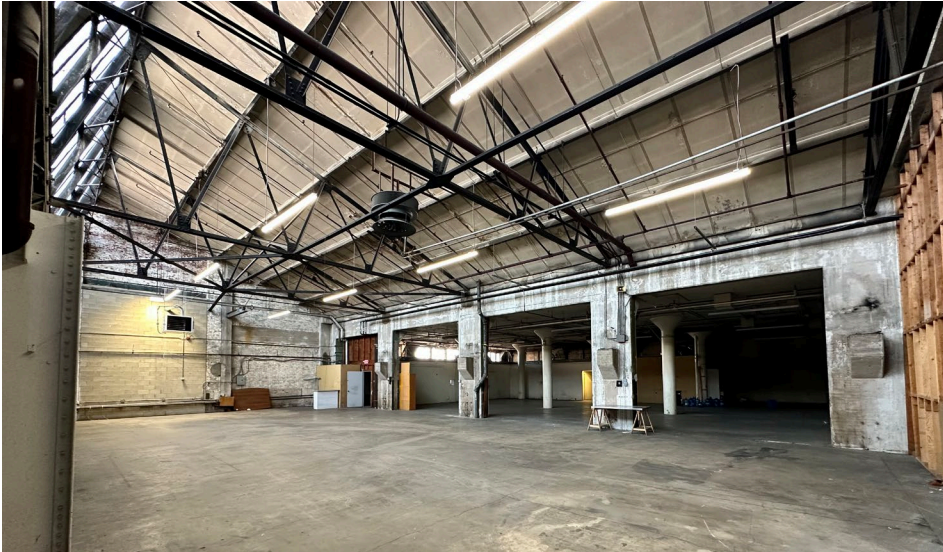
James Friel
Sales Associate
908.305.9001
james@metzindustrial.com



**Metz
Industrial Group**

Site Photos

320 Elizabeth Ave, Newark NJ

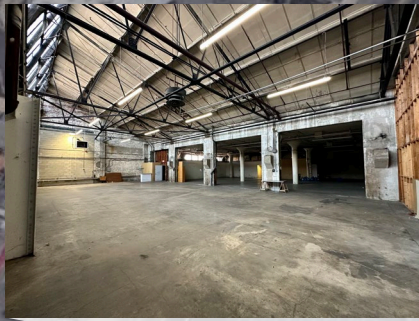


Jordan Metz
Senior Vice President
973.493.0385
jordan@metzindustrial.com

Benito Abbate
Senior Associate
908.655.8331
ben@metzindustrial.com

James Friel
Sales Associate
908.305.9001
james@metzindustrial.com





**9,156SF - 39,750 SF
WAREHOUSE**



**3 ACRES AVAILABLE
TRAILER PARKING LOT**

Jordan Metz
Senior Vice President
973.493.0385
jordan@metzindustrial.com

Benito Abbate
Senior Associate
908.655.8331
ben@metzindustrial.com

James Friel
Sales Associate
908.305.9001
james@metzindustrial.com



**Metz
Industrial Group**

**320 Elizabeth Ave,
Newark NJ**

For more information please contact our exclusive brokers:

Jordan Metz
Senior Vice President
973 493 0385
jordan@metzindustrial.com

Benito Abbate
Senior Associate
908 655 8331
ben@metzindustrial.com

James Friel
Sales Associate
908 305 9001
james@metzindustrial.com



**Bussel
Realty**

**Metz
Industrial Group**

This document has been prepared by Bussel Realty Corp. based on public information. Bussel Realty Corp. makes no guarantees, representations or warranties of any kind, expressed or implied, regarding the information including, but not limited to, warranties of content, accuracy and reliability. Any interested party should undertake their own inquiries as to the accuracy of the information. Bussel Realty Corp. excludes unequivocally all inferred or implied terms, conditions and warranties arising out of this document and excludes all liability for loss and damages arising there from. This publication is the copyrighted property of Bussel Realty Corp. and/or its licensor(s).