

AVAILABLE FOR LEASE

# SANDY COMMERCE PARK

9490 SOUTH 300 WEST  
SANDY, UTAH



CUSHMAN &  
WAKEFIELD



AVAILABLE FOR LEASE

# SANDY COMMERCE PARK

9490 SOUTH 300 WEST  
SANDY, UTAH

- Asking Lease Rate: \$28.50 PSF
- Highly visible, prominent I-15 adjacent location
- Conveniently located between 2 major freeway exits (90th South and 106th South)
- Amenity-rich location near restaurants, hotels, and other services
- Fiber optic connectivity
- Spectacular mountain views
- Shower facilities
- Parking 5/1,000 SF

**ADDITIONAL SPACE AVAILABLE  
WITHIN THE BUILDING:**

**FLOOR 3:** ±25,000 RSF  
**FLOOR 4:** ± 25,000 RSF  
**FLOOR 5:** ± 25,000 RSF

PLEASE CONTACT BROKER FOR DETAILS



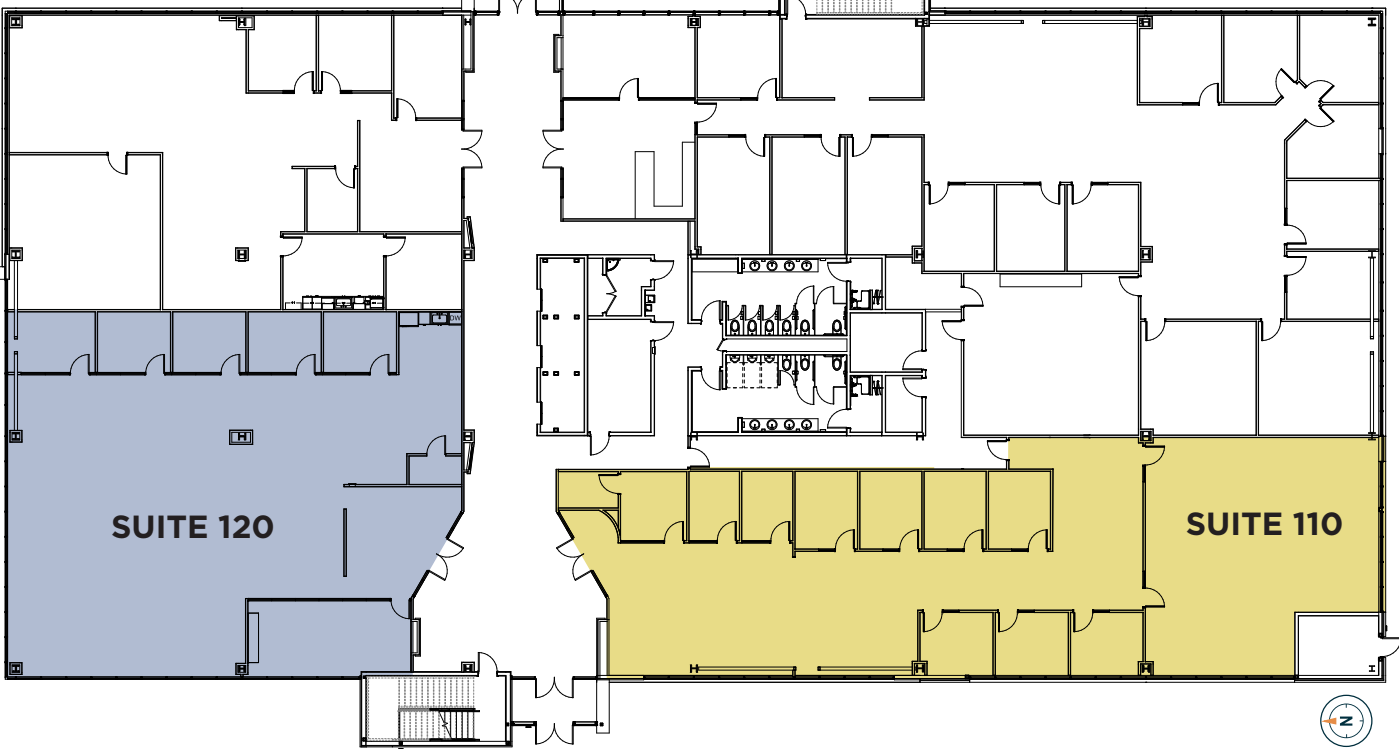


# SANDY COMMERCE CENTER

9490 SOUTH 300 WEST / SANDY, UTAH

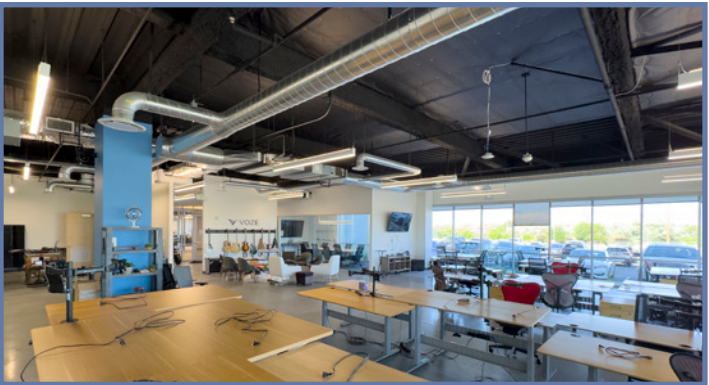
AVAILABLE FOR LEASE

FLOOR 1



SUITE 120 | ~5,000 RSF | AVAILABLE 10/1/2025

SUITE 110 | ~5,000 RSF





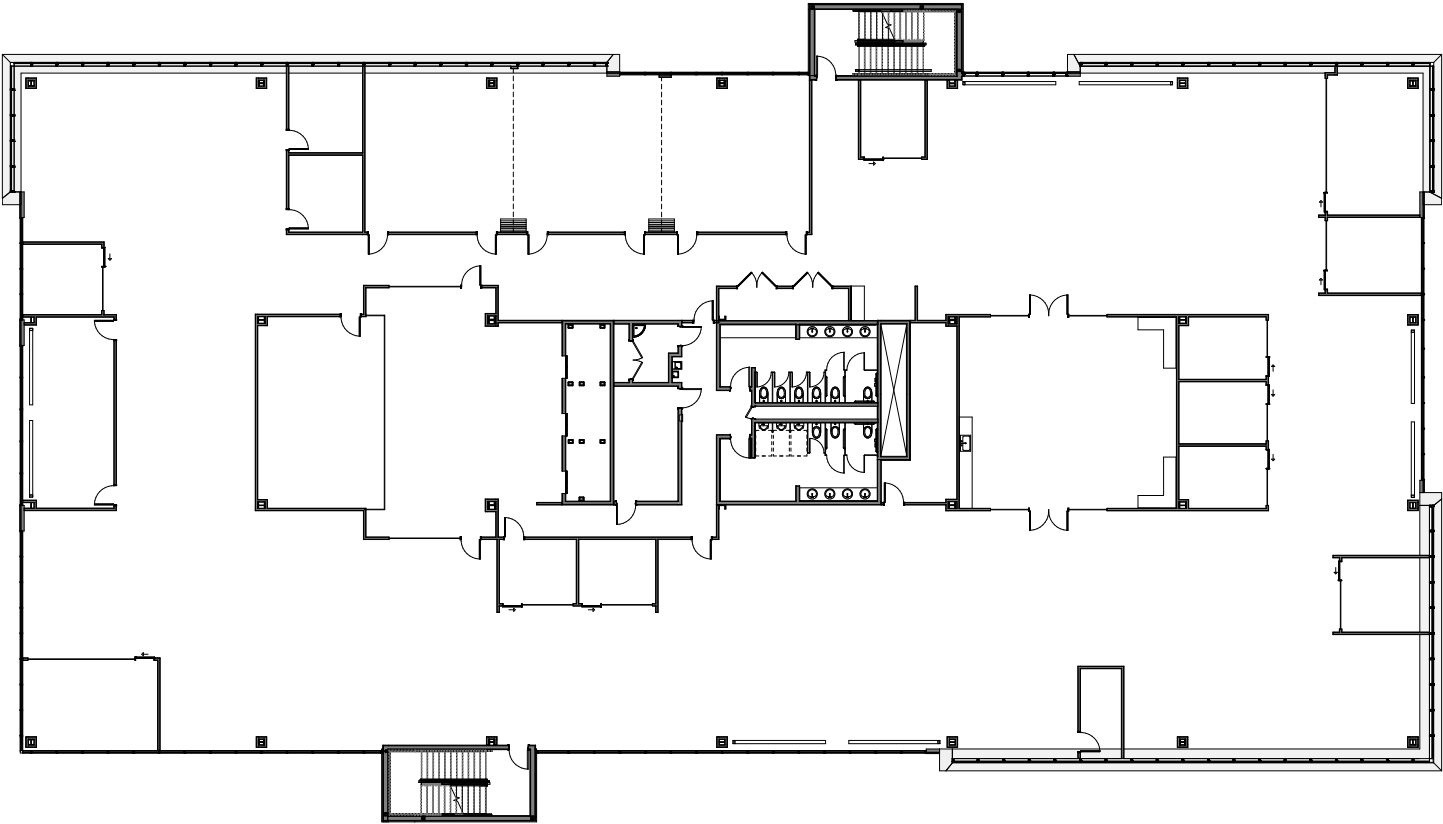
# SANDY COMMERCE CENTER

9490 SOUTH 300 WEST / SANDY, UTAH

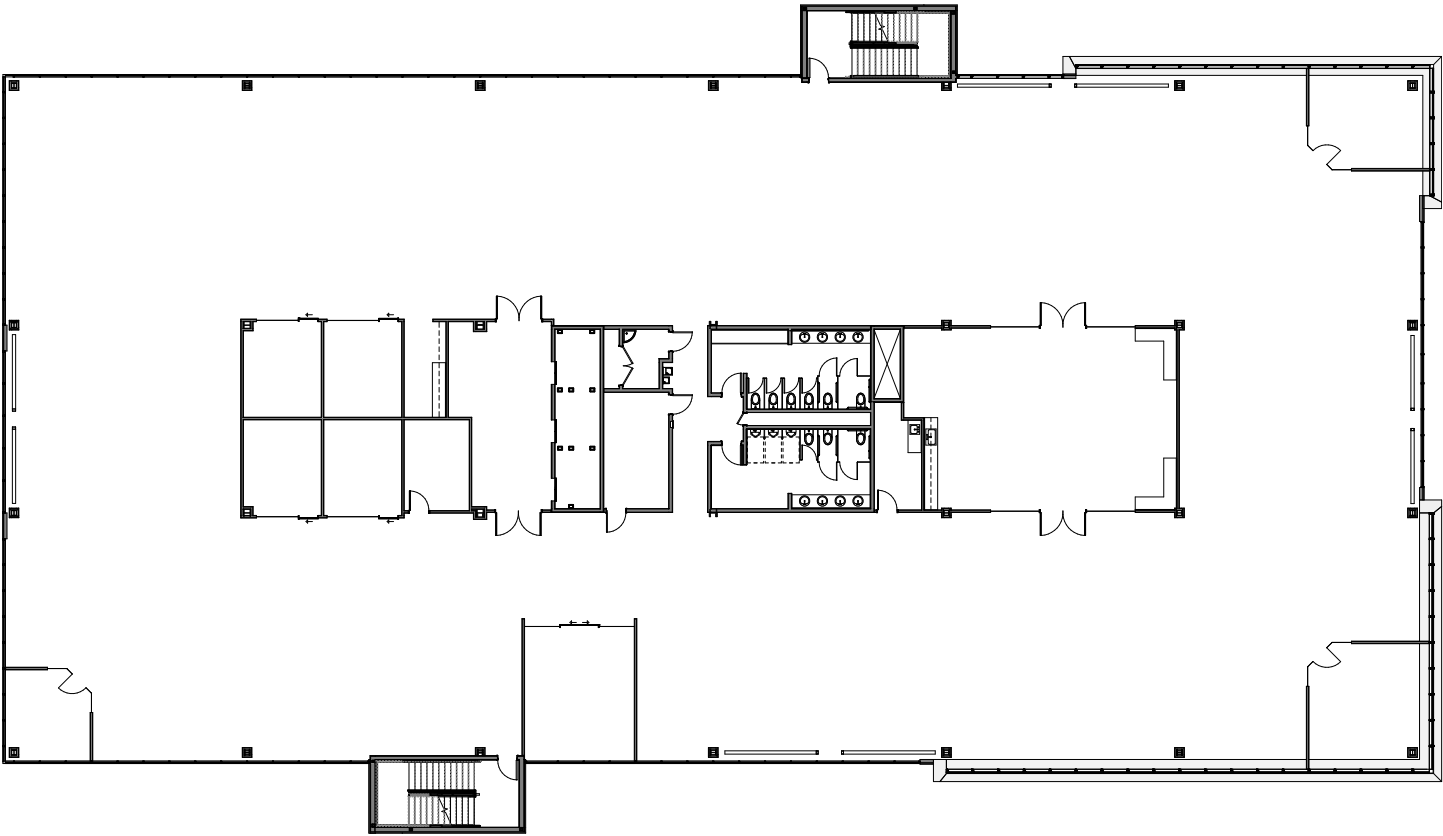
**Additional space available  
within the building.**

**Contact brokers for  
more information.**

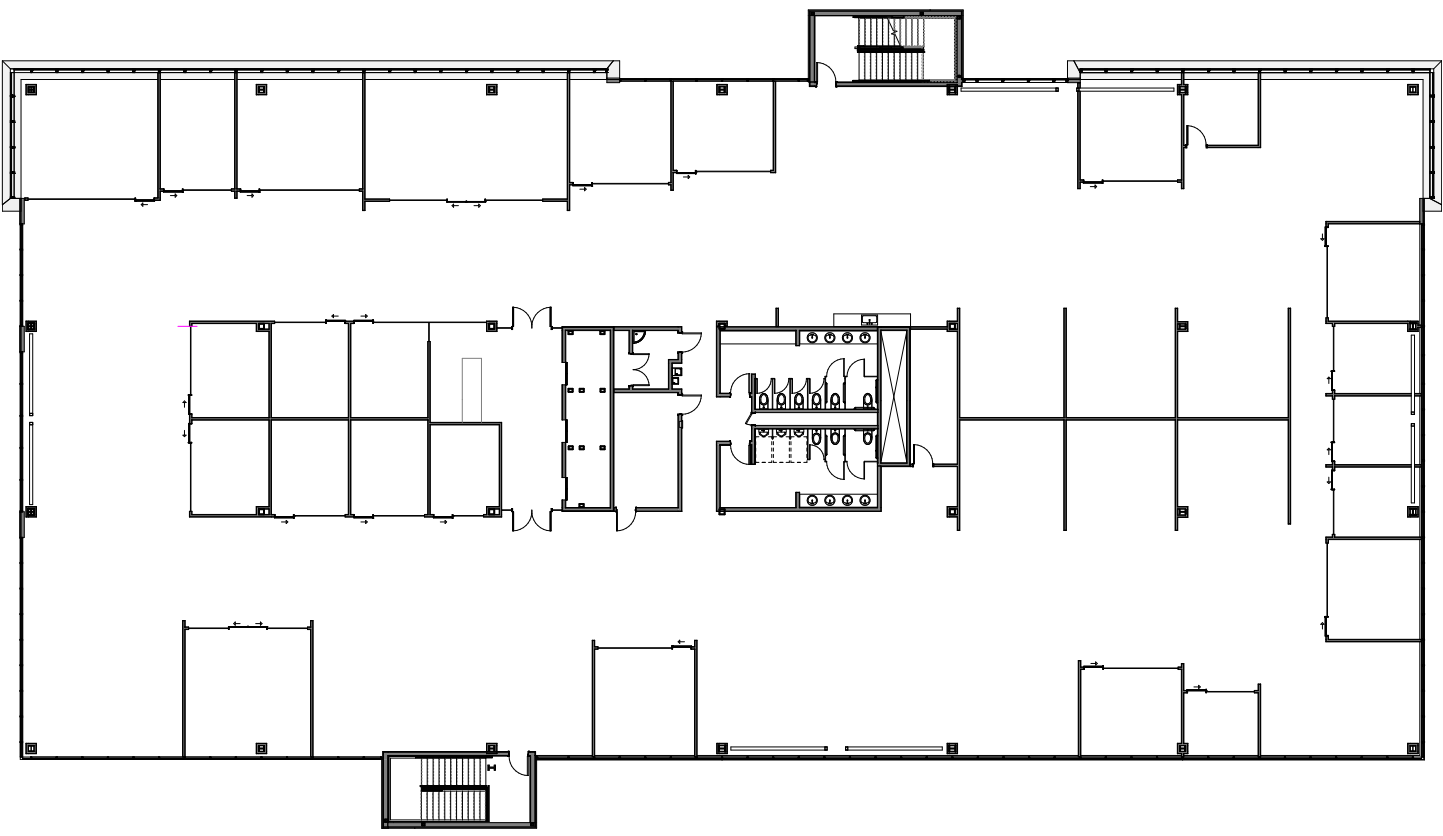
FLOOR 4 | ±25,000 SF



FLOOR 3 | ±25,000 SF



FLOOR 5 | ±25,000 SF





# SANDY COMMERCE CENTER

9490 SOUTH 300 WEST / SANDY, UTAH

AVAILABLE FOR LEASE



**SHOPS AT SOUTH TOWN**

• American Eagle	• JCPenney
• Aeropostale	• Journeys
• Buckle	• Lens Crafters
• Ethan Allen	• Morgan Jewelers
• Foot Locker	• Pacsun
• H&M	• Round 1
• Hallmark	• Vans
• HomeGoods	• Zumiez



# SANDY COMMERCE CENTER

9490 SOUTH 300 WEST / SANDY, UTAH





AVAILABLE FOR LEASE

# SANDY COMMERCE CENTER

FOR ADDITIONAL INFORMATION, CONTACT:

**Dana Baird, ccim**

Executive Managing Director  
+1 801 303 5526  
dana.baird@cushwake.com

**Mike Richmond**

Executive Managing Director  
+1 801 303 5434  
mike.richmond@cushwake.com



170 South Main Street Suite 1600  
Salt Lake City, UT  
+1 801 322 2000 [cushmanwakefield.com](http://cushmanwakefield.com)

Cushman & Wakefield Copyright 2024. No warranty or representation, express or implied, is made to the accuracy or completeness of the information contained herein, and same is submitted subject to errors, omissions, change of price, rental or other conditions, withdrawal without notice, and to any special listing conditions imposed by the property owner(s). As applicable, we make no representation as to the condition of the property (or properties) in question. (G:\UT\SL1\Shared\Apps\Gigas\1 - Projects\Richmond, Mike\1 - Flyers\SandyCommercePark)