

Up to 668,615 SF Available

Suffield Industrial Center

1120 HARVEY
LANE
Suffield Connecticut



14' - 36' Clear | 121 Loading Docks | Rail Served | Efficient Column Spacing | Building and Trailer Parking Expansion Potential



The background of the image is a light gray topographic map with various contour lines and shapes, including some triangular shapes.

1120 HARVEY
LANE
Suffield Connecticut

Property Highlights and Details

1120 HARVEY LANE
Suffield Connecticut

Building Size: 668,615 SF

Site Size: 120 Acres

Rail Bay: 1

Auto Parking: 116 spots

Lighting: LED throughout

Ceiling Height: 14'-36' clear

Dock Doors: 121 Dock Doors

Trailer Parking: 117 Paved; 50 Gravel

Office Space: +/- 28,000 SF

Sprinklers: Wet and Dry

Floors: Heavy Floor Loading

Roof: Rubber Membrane and Built up

HVAC: Varies from Section to Section

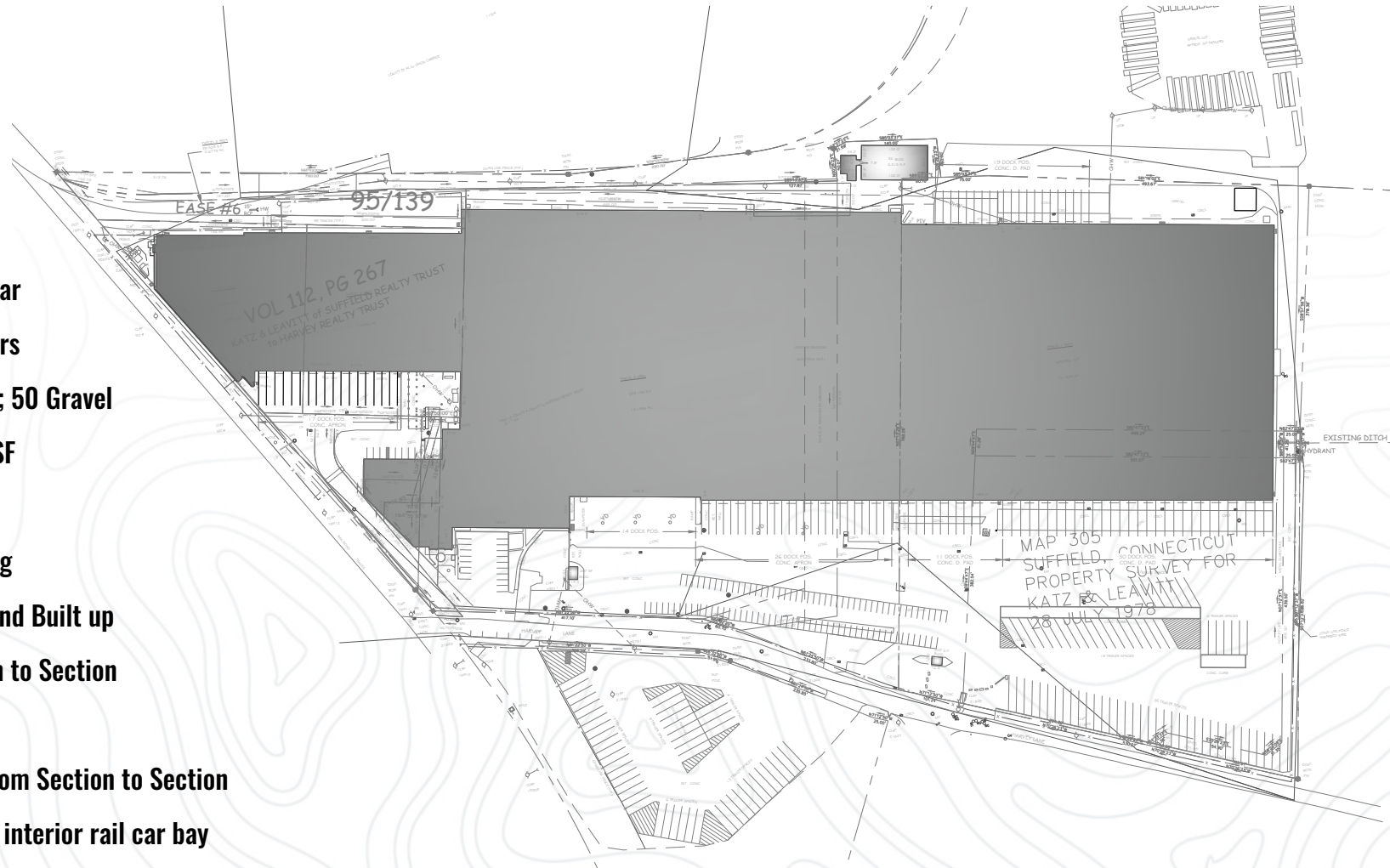
Electrical: Heavy Power

Column Spacing: Varies from Section to Section

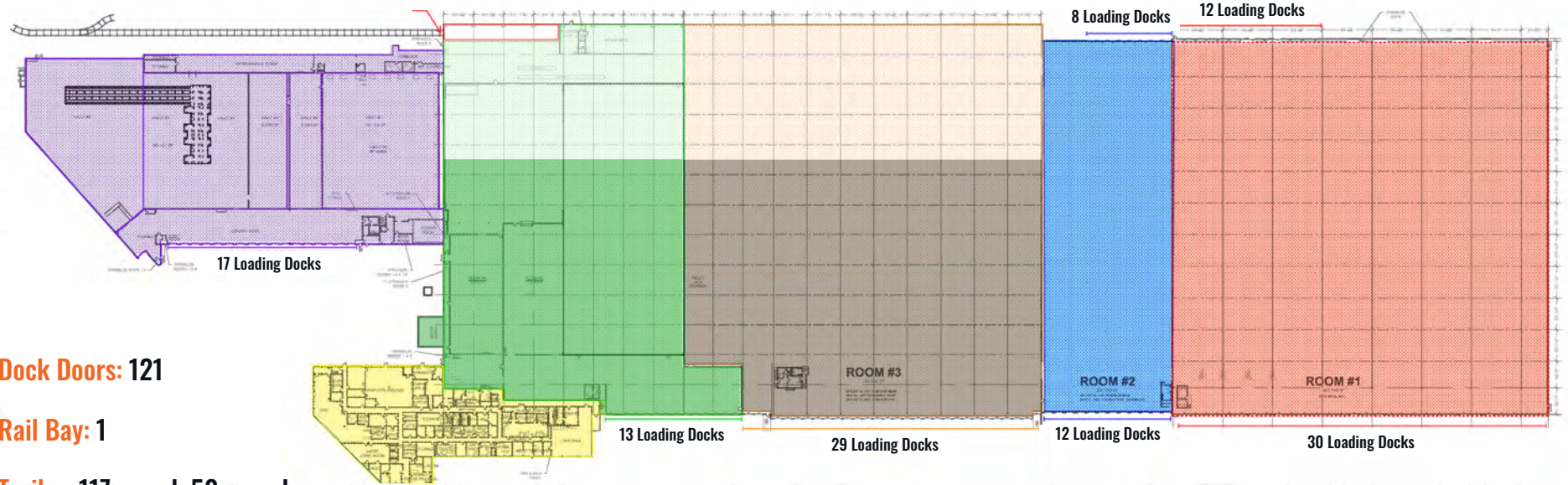
Rail Sided: With spur and interior rail car bay

Security: Fully Fenced and Secured Campus with Guard Shack

Expansion Potential: Additional Acreage to the east to accommodate building or trailer parking expansion



Floor Plan



Dock Doors: 121

Rail Bay: 1

Trailer: 117 paved; 50 gravel

Total Auto Parking: 116

Total Acres: 120

Total Building SF: 668,615

AREA 6	AREA 5	AREA 4	AREA 3	AREA 2	AREA 1
Office 28,000 SF	+/- 94,000 SF 14' - 26' clear 17 dock doors	120,000 SF 16' clear 13 dock doors	178,000 SF 21' clear 28 dock doors	62,190 SF 30' clear CROSS DOCK 20 dock doors	180,743 SF 36' clear CROSS DOCK 42 dock doors

Site Plan

Future Development / Expansion

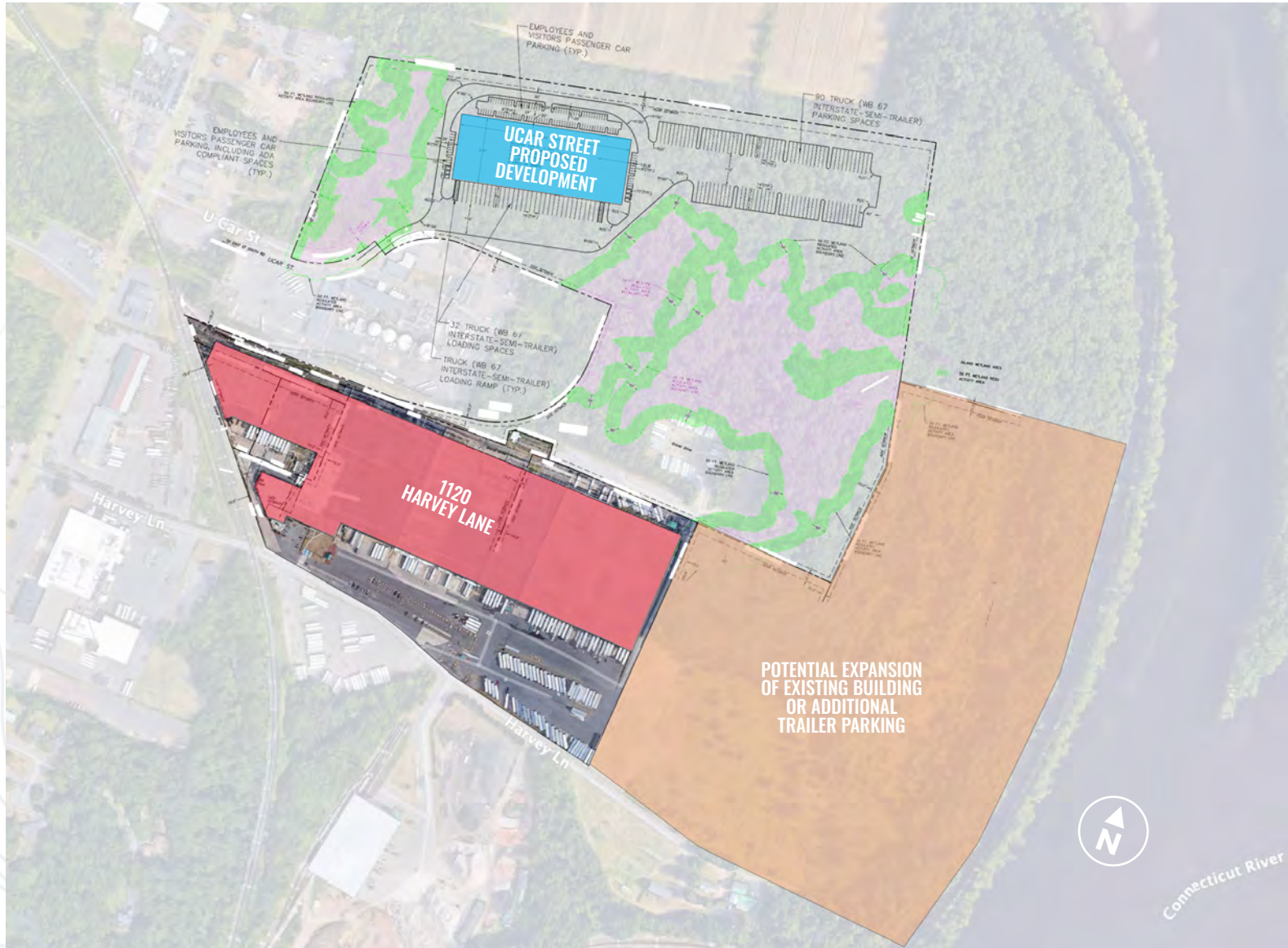
HARVEY LANE PROPOSED DEVELOPMENT

Ucar Street Proposed Development

- 138,000 SF Class A Warehouse/ Logistics Center
- 36' Clear Height
- 28 Loading Docks
- 2 Drive-in-Doors
- 90 Trailer Spaces
- 121 Auto Spaces

Harvey Lane Expansion

- 34.05 Acres of Developable Land
- Potential Building Expansion of 400,000+ SF
- Potential Trailer Parking Expansion of 400+ Trailer Spaces



Location & Access

DRIVE TIMES

Boston, MA

104 Miles 108 Minutes



Providence, RI

98 Miles 107 Minutes



Port of Boston

105 Miles 107 Minutes



New Haven Harbor

55 Miles 56 Minutes



Springfield

13 Miles 18 Minutes



CSX Intermodal

13 Miles 18 Minutes



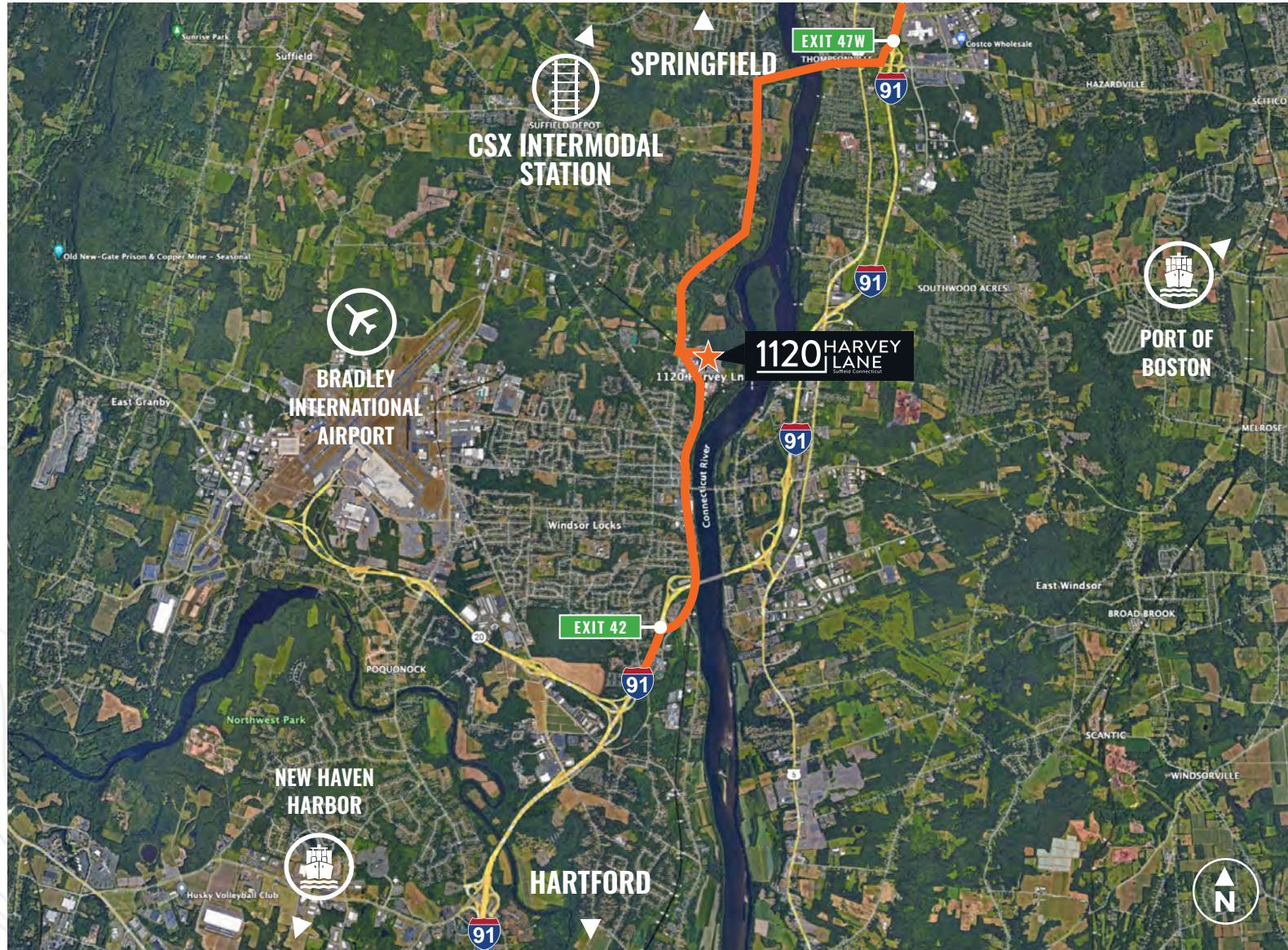
Harford

14 Miles 19 Minutes



Bradley International Airport

6 Miles 15 Minutes



Access to New England & NY

1120 HARVEY LANE
Suffield Connecticut

LABOR POPULATION

Transportation & Warehouse Employees

5 MILES

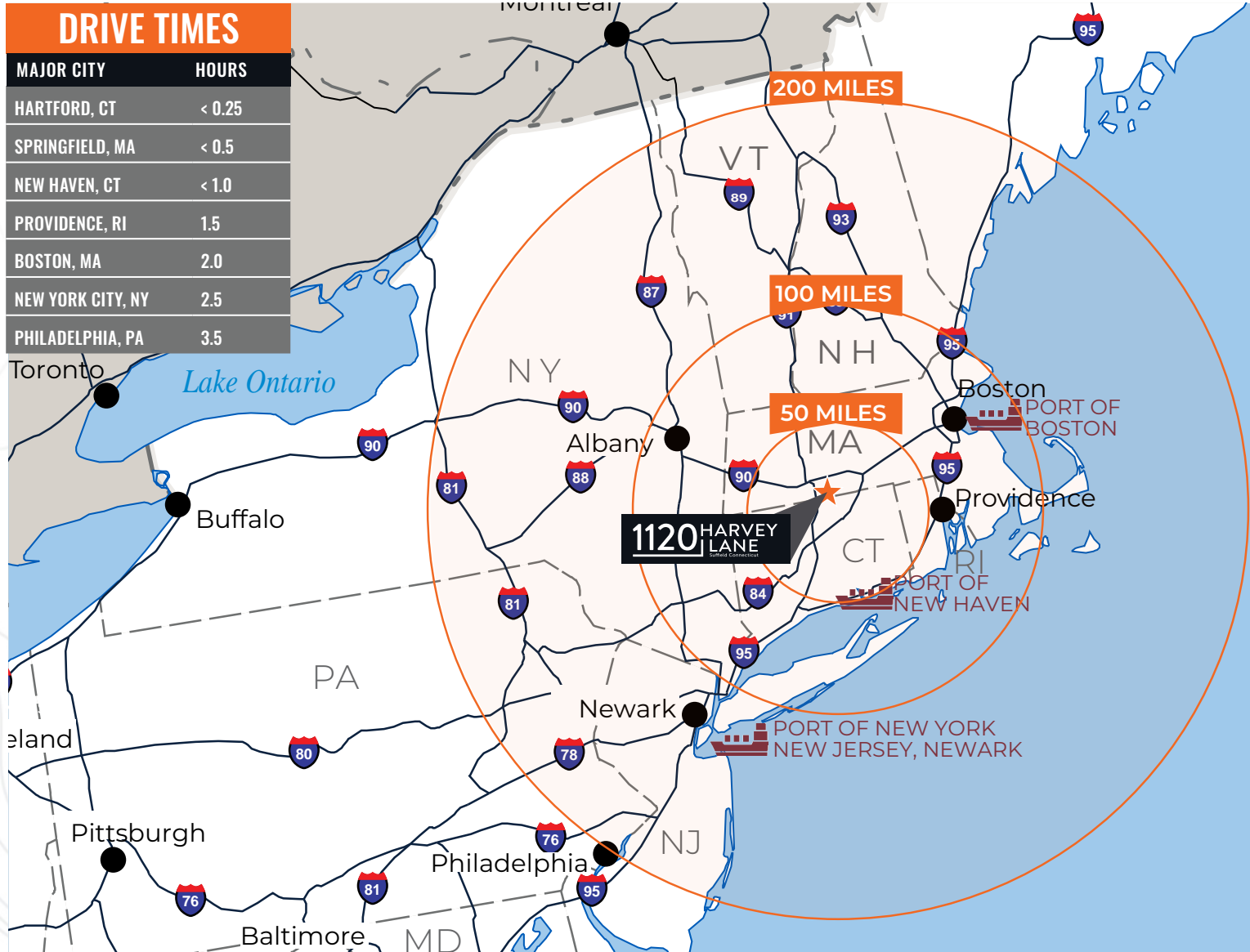
5,193
BLUE COLLAR WORKERS

10 MILES

10,193
BLUE COLLAR WORKERS

15 MILES

26,965
BLUE COLLAR WORKERS



Thank You

1120 HARVEY LANE

Suffield Connecticut



For more information, please contact:

Shawn McMahon

860.702.2833

860.214.2828

shawn.mcmahon@jll.com

Christopher Ostop

860.702.2835

860.930.3686

christopher.ostop@jll.com

Sean O'Neil

860.702.2839

860.680.4867

sean.oneil@jll.com

 **GFI PARTNERS**

 **JLL**

Although information has been obtained from sources deemed reliable, neither Owner nor JLL makes any guarantees, warranties or representations, express or implied, as to the completeness or accuracy as to the information contained herein. Any projections, opinions, assumptions or estimates used are for example only. There may be differences between projected and actual results, and those differences may be material. The Property may be withdrawn without notice. Neither Owner nor JLL accepts any liability for any loss or damage suffered by any party resulting from reliance on this information. If the recipient of this information has signed a confidentiality agreement regarding this matter, this information is subject to the terms of that agreement. ©2024 Jones Lang LaSalle IP, Inc. All rights reserved.