



Colliers

Planned
Demo

Planned
Demo

For Lease

4764 Clifton Road
Temple Hills, MD 20748

Industrial Service Facility with Outdoor Storage
13,300 SF with 2.5 Usable Acres

 **CATALYST**
INVESTMENT PARTNERS

4764 Clifton Road | For Lease

Property Overview

Located at 4764 Clifton Road, this versatile industrial site is in the beginning stages of demolition of the existing house and older bay building. When complete it will offer three ideal leasing options for a variety of users.

3 Leasing Options Available...

Option 1: Full Property

2 Service Facilities Available

- * +/-7,200 SF & +/-6,100 SF
- * 2.5 Acres of Usable Industrial Outdoor Storage
- * 12 Drive-in Doors
- * Paved, Fenced & Secured

Service Facility 1	7,200 SF
Industrial Outdoor Storage	1.5 Acre Usable IOS
Clear Height	17'
Loading	6 Drive-in Doors (12'x14')
Office	± 967 SF New Office
Power	200-amp, 120/240-volt

Service Facility 2	6,100 SF
Industrial Outdoor Storage	1 Acre Usable IOS
Clear Height	18'
Loading	6 Drive-in Doors (12'x14')
Office	± 1,100 SF Office
Power	200-amp, 120/240-volt



4764 Clifton Road | For Lease

Property Overview

Option 2: LOT 1

Service Facility 1	7,200 SF
Industrial Outdoor Storage	1.5 Acre Usable IOS
Clear Height	17'
Loading	6 Drive-in Doors (12'x14')
Office	900 SF New Office
Power	200-amp, 120/240-volt



Option 3: LOT 2

Service Facility 2	6,100 SF
Industrial Outdoor Storage	1 Acre Usable IOS
Clear Height	18'
Loading	6 Drive-in Doors (12'x14')
Office	± 1,100 SF Office
Power	200-amp, 120/240-volt

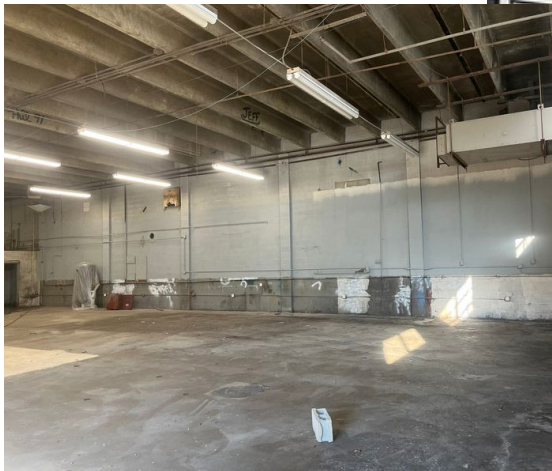


4764 Clifton Road | For Lease

Service Facility 1



Service Facility 2

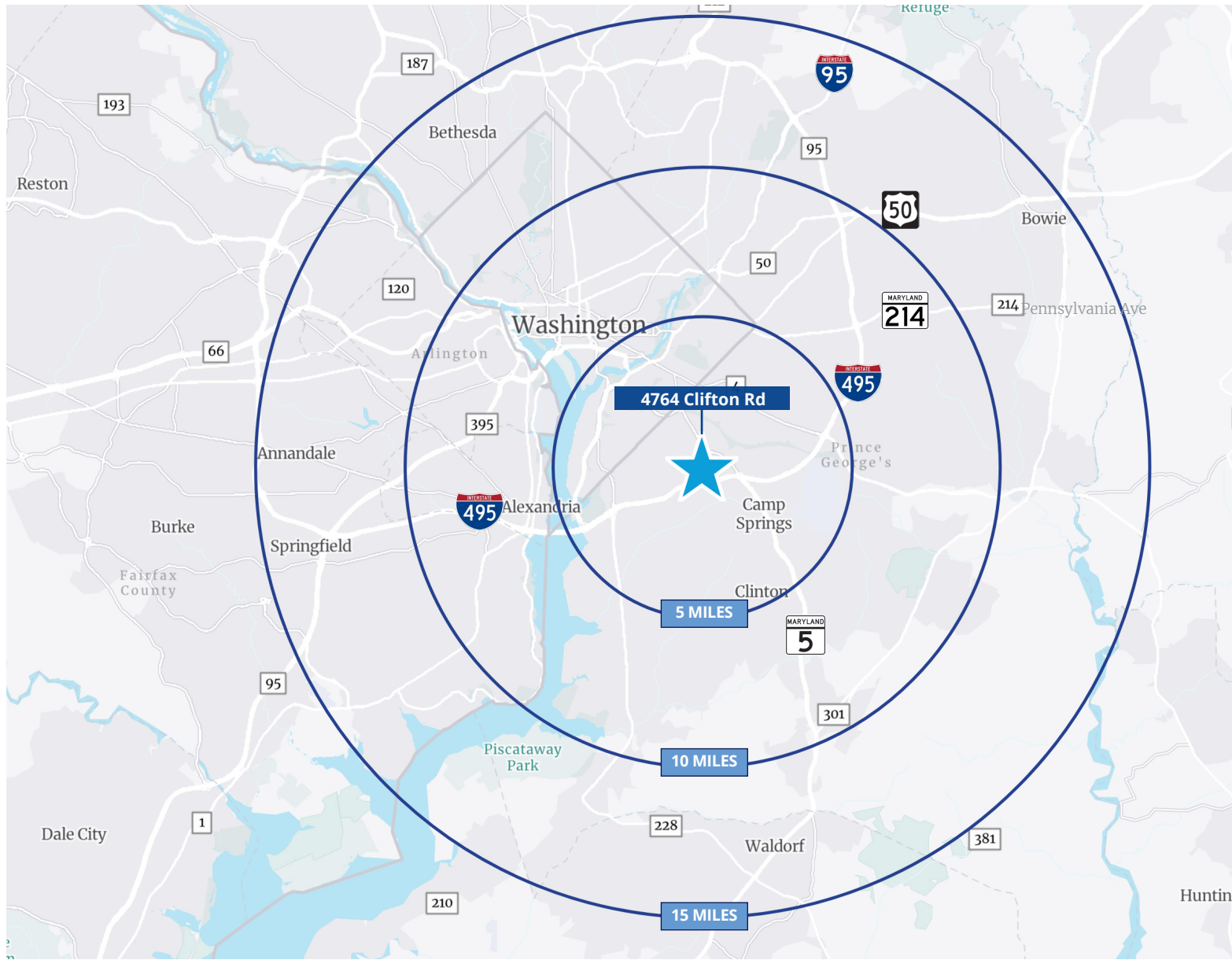


4764 Clifton Road | For Lease

Driving Distances

With direct access to major transportation arteries including I-495, I-95, and Pennsylvania Avenue, the site ensures seamless regional and interstate logistics, while being just minutes from downtown Washington DC.

The location also places businesses within reach of key Mid-Atlantic markets, including Baltimore, Washington DC and Philadelphia, enhancing distribution capabilities across the region.



1.9 Miles

Annapolis



21.7 Miles



9.9 Miles



10.4 Miles



12.3 Miles



6 Miles

Contact us:

Jason Sullivan, SIOR
Executive Vice President
+1 410 319 2409
jason.sullivan@colliers.com

Brian Siegel, SIOR
Executive Vice President
+1 410 319 2410
brian.siegel@colliers.com

Melissa Parrish
Associate Vice President
+1 410 319 2412
melissa.parrish@colliers.com

7001 Columbia Gateway Drive
Suite 220
Columbia, MD 21046
P: +1 410 319 2411
colliers.com