

Midtown Property For Lease

23 N.W. 10th Street

Oklahoma City, Oklahoma 73103

Lease Rate:
\$39.00 PSF NNN
\$50 TI Allowance



Highlights

+Available Square Feet:

-6,000± RSF

+Parking:

-(25) Total spaces

- (5) Free surface spaces

- (20) Interior garage

+Exterior signage available

+Short walk to Midtown restaurants, bars, shopping & museums

+Perfect space for retail, office, or a showroom

Conceptual Rendering



23 N.W. 10th St

+Available Square Feet:

-6,000± RSF



Current



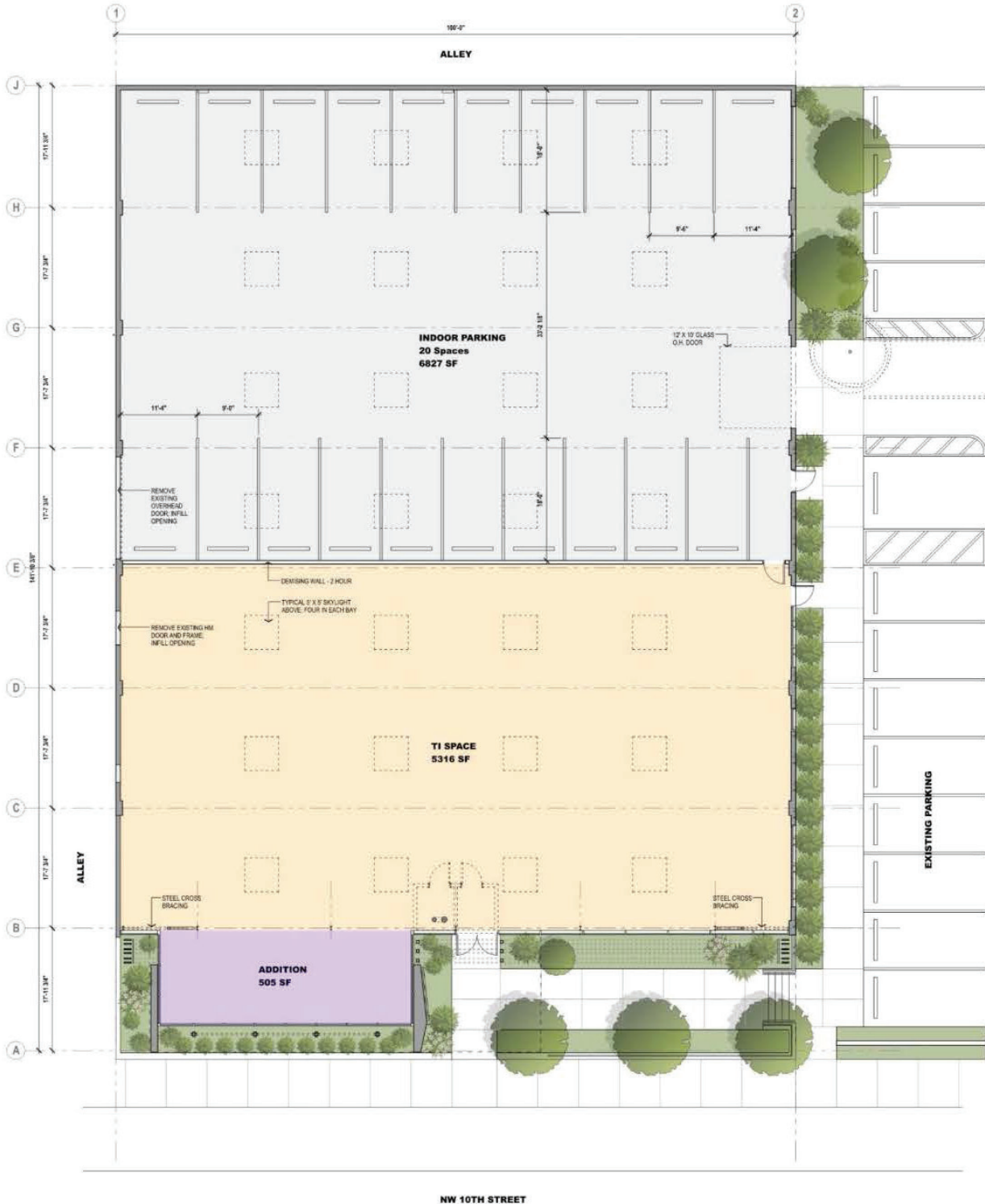
Future



Concept Site Plan

+Available Square Feet:

-6,000± RSF



Contact Us



Midtown

Walking distance
to shops and
restaurants



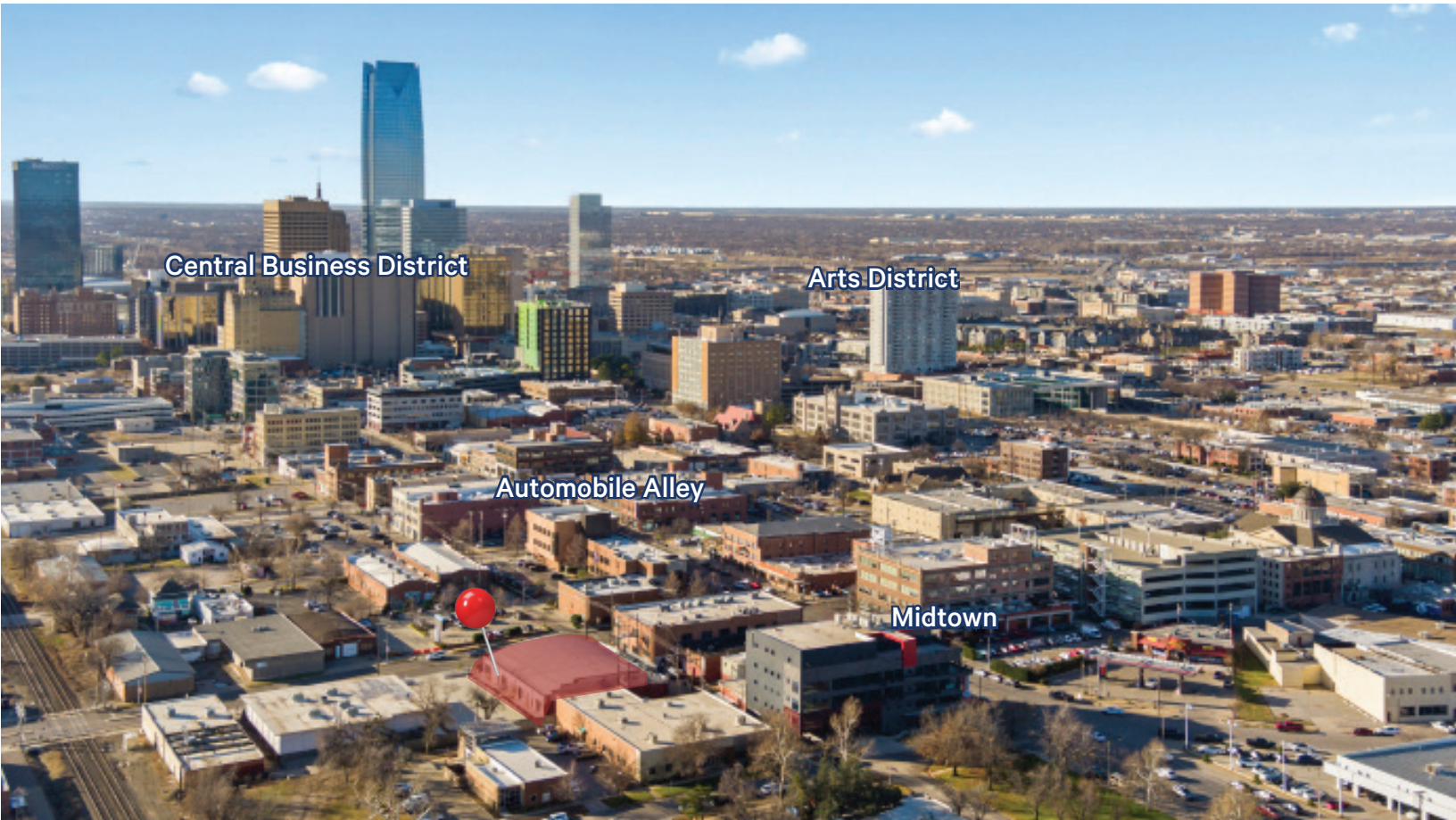
Growth

4.16% Population
growth within 1 mile



Traffic

13,051 VPD @ NW
10th & N Broadway



Amy Dunn, CCIM
First Vice President
+1 405 209 3656
amy.dunn@cbre.com

Lease Rate:
\$39.00 PSF NNN

CBRE