

# FOR LEASE

## ANGELO PLAZA

1801 D Street | Vancouver, WA 98663



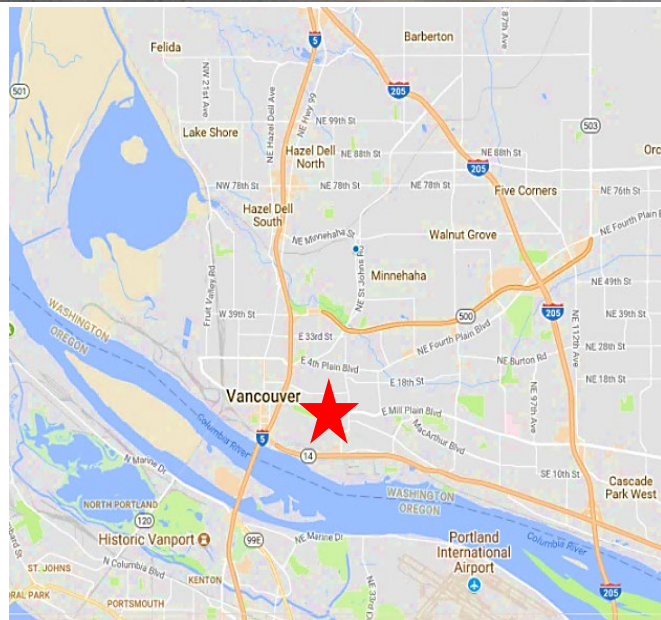
900 Washington St, Suite 850, Vancouver, WA  
360.597.0574 | [www.fg-cre.com](http://www.fg-cre.com)



## PROPERTY HIGHLIGHTS

Located in downtown Vancouver with easy access to I-5 and Highway 14

- Availability: Unit #8 – 800 RSF
- Rental Rate: \$20.00/SF, Gross
- Onsite parking available
- Very walkable (Walk Score 80)
- Easy access via mass transit



## FOR MORE INFORMATION:

Eric Fuller, CCIM, SIOR

360.901.2827 | [efuller@fg-cre.com](mailto:efuller@fg-cre.com)

KC Fuller

360.597.0569 | [kfuller@fg-cre.com](mailto:kfuller@fg-cre.com)



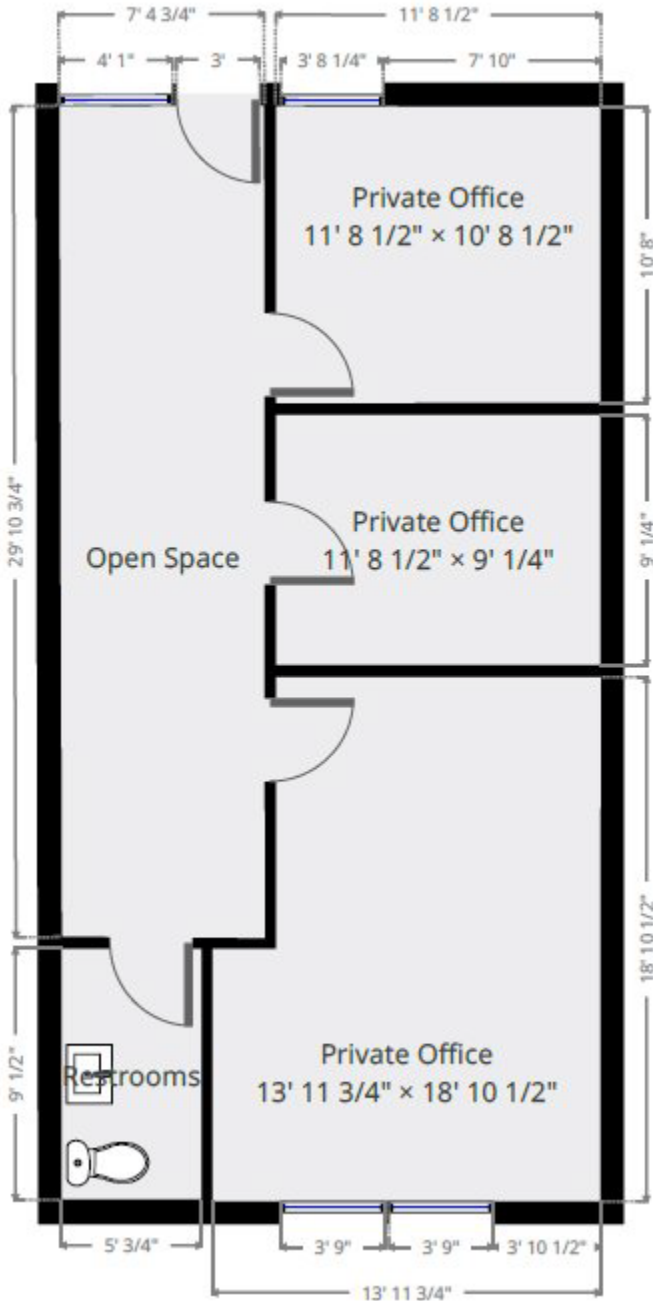
# FOR LEASE

## ANGELO PLAZA

1801 D Street | Vancouver, WA 98663



900 Washington St, Suite 850, Vancouver, WA  
360.597.0574 | [www.fg-cre.com](http://www.fg-cre.com)



### 2024/ 2025 Demographics

	1-Mile	3-Mile	5-Mile
Est. Population	16,454	78,226	225,808
Avg. Household Income	\$83,568	\$83,298	\$93,410
Daytime Employment	17,550	45,345	106,498

### Average Daily Traffic Counts

E 15<sup>th</sup> St & D St. E – 13,119

E 15<sup>th</sup> St & C St. E – 12,114

E 15<sup>th</sup> St & D St. E – 13,361