

1,163 SF RETAIL SPACE



FOR LEASE



Home Depot Center

1484-1486 East 2nd Street
Beaumont, California 92223

Property Highlights

- 1,163 SF Retail Available
- Excellent Street Visibility
- Easy Access to 10, 60 & 79 Freeways
- \$100K Average Household Income
- Great San Geronio Village Retail Corridor
- Join: Home Depot, Dollar Tree, Walmart Supercenter, Kohl's, Petco, Best Buy, Aldi, Ross, McDonald's, El Pollo Loco, Farmer Boys & More

DEMOGRAPHICS	1 MILE	3 MILES	5 MILES
Total Households	4,606	20,515	31,038
Total Population	12,858	56,744	87,778
Average HH Income	\$99,066	\$99,262	\$104,278

SPACES	LEASE RATE	NNN	SPACE SIZE
1484 Suite B	\$2.50 SF/month	\$1.09	1,163 SF



COMMERCIAL REAL ESTATE SERVICES, WORLDWIDE

www.naicapital.com

Steve Liu

Executive Vice President | 949.468.2385 | C: 714.349.3547
sliu@naicapital.com | CalDRE #01323150

Enrique Solis

Vice President | 909.243.7606 | C: 760.409.3010
enrique.solis@naicapital.com | CalDRE #02082274

Nikki Liu

Senior Associate | 949.468.2386 | C: 818.744.339
nliu@naicapital.com | CalDRE #02038755

NO WARRANTY, EXPRESS OR IMPLIED, IS MADE AS TO THE ACCURACY OF THE INFORMATION CONTAINED HEREIN. THIS INFORMATION IS SUBMITTED SUBJECT TO ERRORS, OMISSIONS, CHANGE OF PRICE, RENTAL OR OTHER CONDITIONS, WITHDRAWAL WITHOUT NOTICE, AND IS SUBJECT TO ANY SPECIAL LISTING CONDITIONS IMPOSED BY OUR PRINCIPALS, COOPERATING BROKERS, BUYERS, TENANTS AND OTHER PARTIES WHO RECEIVE THIS DOCUMENT SHOULD NOT RELY ON IT, BUT SHOULD USE IT AS A STARTING POINT OF ANALYSIS, AND SHOULD INDEPENDENTLY CONFIRM THE ACCURACY OF THE INFORMATION CONTAINED HEREIN THROUGH A DUE DILIGENCE REVIEW OF THE BOOKS, RECORDS, FILES AND DOCUMENTS THAT CONSTITUTE RELIABLE SOURCES OF THE INFORMATION DESCRIBED HEREIN. LOGOS ARE FOR IDENTIFICATION PURPOSES ONLY AND MAY BE TRADEMARKS OF THEIR RESPECTIVE COMPANIES. NAI CAPITAL, INC. CA BRE LIC. #01990696.

1,163 SF RETAIL SPACE



FOR LEASE



COMMERCIAL REAL ESTATE SERVICES, WORLDWIDE

www.naicapital.com

Steve Liu

Executive Vice President | 949.468.2385 | C: 714.349.3547
sliu@naicapital.com | CalDRE #01323150

Enrique Solis

Vice President | 909.243.7606 | C: 760.409.3010
enrique.solis@naicapital.com | CalDRE #02082274

Nikki Liu

Senior Associate | 949.468.2386 | C: 818.744.339
nliu@naicapital.com | CalDRE #02038755

NO WARRANTY, EXPRESS OR IMPLIED, IS MADE AS TO THE ACCURACY OF THE INFORMATION CONTAINED HEREIN. THIS INFORMATION IS SUBMITTED SUBJECT TO ERRORS, OMISSIONS, CHANGE OF PRICE, RENTAL OR OTHER CONDITIONS, WITHDRAWAL WITHOUT NOTICE, AND IS SUBJECT TO ANY SPECIAL LISTING CONDITIONS IMPOSED BY OUR PRINCIPALS. COOPERATING BROKERS, BUYERS, TENANTS AND OTHER PARTIES WHO RECEIVE THIS DOCUMENT SHOULD NOT RELY ON IT, BUT SHOULD USE IT AS A STARTING POINT OF ANALYSIS, AND SHOULD INDEPENDENTLY CONFIRM THE ACCURACY OF THE INFORMATION CONTAINED HEREIN THROUGH A DUE DILIGENCE REVIEW OF THE BOOKS, RECORDS, FILES AND DOCUMENTS THAT CONSTITUTE RELIABLE SOURCES OF THE INFORMATION DESCRIBED HEREIN. LOGOS ARE FOR IDENTIFICATION PURPOSES ONLY AND MAY BE TRADEMARKS OF THEIR RESPECTIVE COMPANIES. NAI CAPITAL, INC. CA BRE LIC. #01990696.

1,163 SF RETAIL SPACE



FOR LEASE



Retailer Map



COMMERCIAL REAL ESTATE SERVICES, WORLDWIDE

www.naicapital.com

Steve Liu

Executive Vice President | 949.468.2385 | C: 714.349.3547
sliu@naicapital.com | CalDRE #01323150

Enrique Solis

Vice President | 909.243.7606 | C: 760.409.3010
enrique.solis@naicapital.com | CalDRE #02082274

Nikki Liu

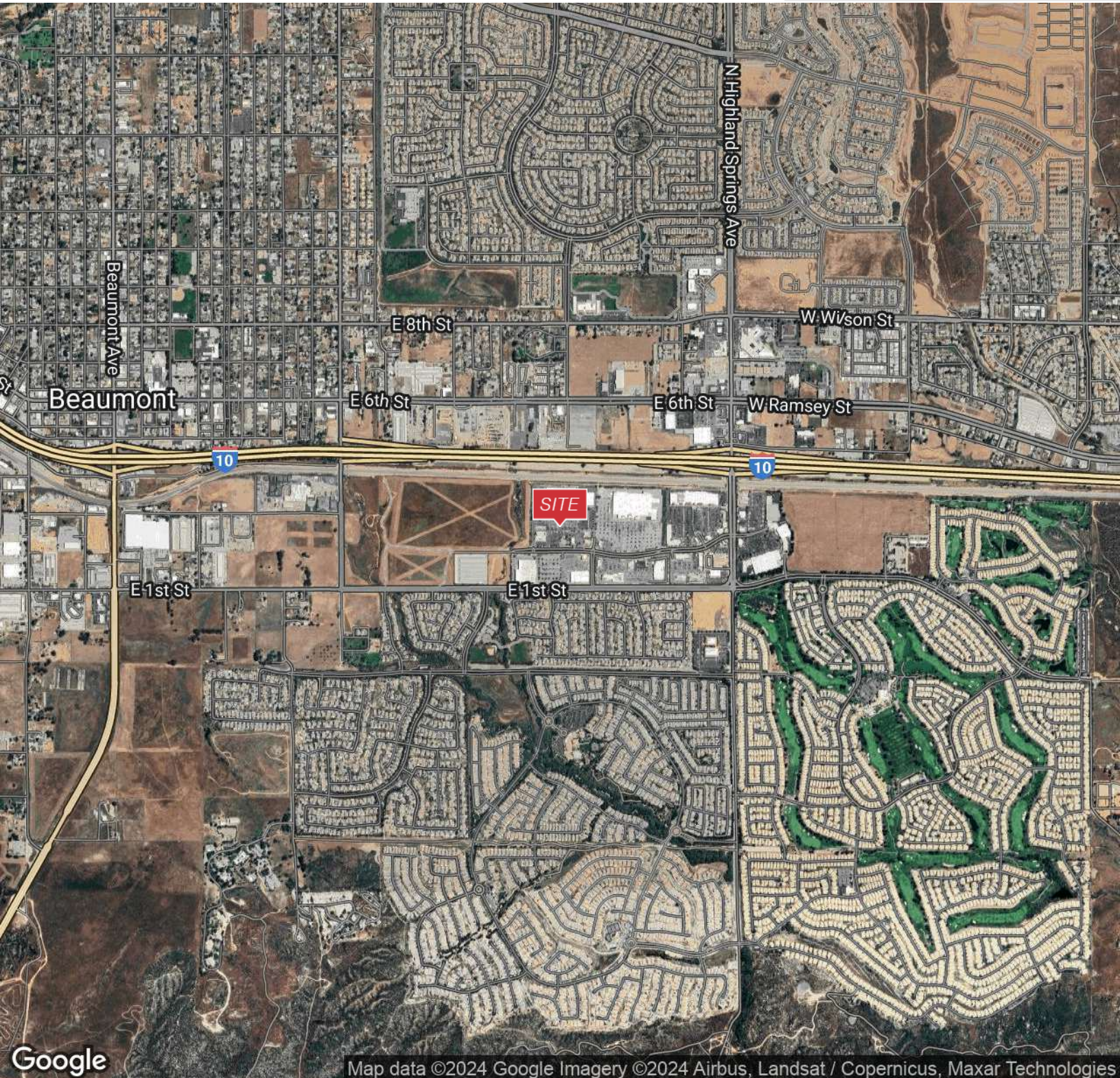
Senior Associate | 949.468.2386 | C: 818.744.339
nliu@naicapital.com | CalDRE #02038755

NO WARRANTY, EXPRESS OR IMPLIED, IS MADE AS TO THE ACCURACY OF THE INFORMATION CONTAINED HEREIN. THIS INFORMATION IS SUBMITTED SUBJECT TO ERRORS, OMISSIONS, CHANGE OF PRICE, RENTAL OR OTHER CONDITIONS, WITHDRAWAL WITHOUT NOTICE, AND IS SUBJECT TO ANY SPECIAL LISTING CONDITIONS IMPOSED BY OUR PRINCIPALS. COOPERATING BROKERS, BUYERS, TENANTS AND OTHER PARTIES WHO RECEIVE THIS DOCUMENT SHOULD NOT RELY ON IT, BUT SHOULD USE IT AS A STARTING POINT OF ANALYSIS, AND SHOULD INDEPENDENTLY CONFIRM THE ACCURACY OF THE INFORMATION CONTAINED HEREIN THROUGH A DUE DILIGENCE REVIEW OF THE BOOKS, RECORDS, FILES AND DOCUMENTS THAT CONSTITUTE RELIABLE SOURCES OF THE INFORMATION DESCRIBED HEREIN. LOGOS ARE FOR IDENTIFICATION PURPOSES ONLY AND MAY BE TRADEMARKS OF THEIR RESPECTIVE COMPANIES. NAI CAPITAL, INC. CA BRE LIC. #01990696.

1,163 SF RETAIL SPACE



FOR LEASE



Google

Map data ©2024 Google Imagery ©2024 Airbus, Landsat / Copernicus, Maxar Technologies



COMMERCIAL REAL ESTATE SERVICES, WORLDWIDE

www.naicapital.com

Steve Liu

Executive Vice President | 949.468.2385 | C: 714.349.3547
sliu@naicapital.com | CalDRE #01323150

Enrique Solis

Vice President | 909.243.7606 | C: 760.409.3010
enrique.solis@naicapital.com | CalDRE #02082274

Nikki Liu

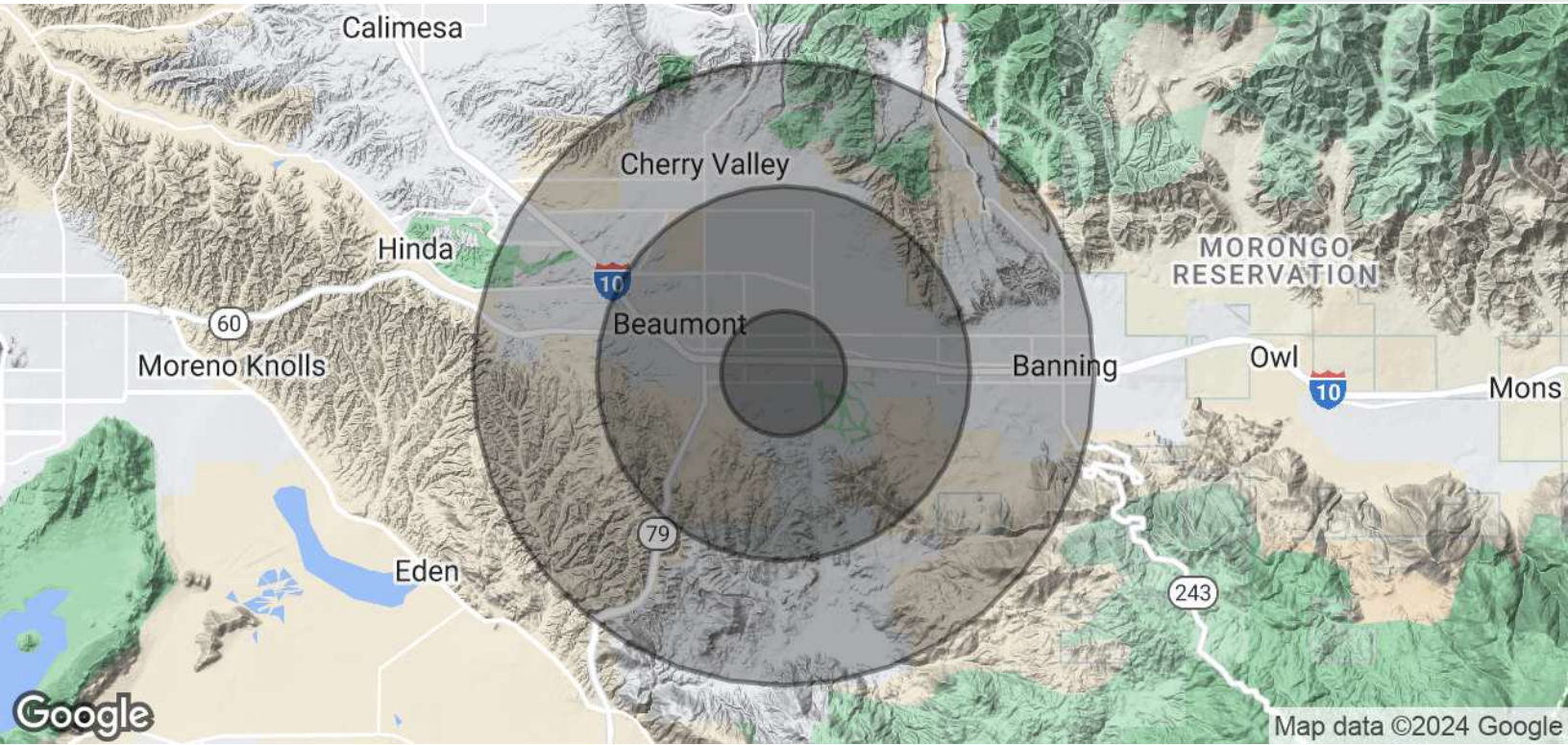
Senior Associate | 949.468.2386 | C: 818.744.339
nliu@naicapital.com | CalDRE #02038755

NO WARRANTY, EXPRESS OR IMPLIED, IS MADE AS TO THE ACCURACY OF THE INFORMATION CONTAINED HEREIN. THIS INFORMATION IS SUBMITTED SUBJECT TO ERRORS, OMISSIONS, CHANGE OF PRICE, RENTAL OR OTHER CONDITIONS, WITHDRAWAL WITHOUT NOTICE, AND IS SUBJECT TO ANY SPECIAL LISTING CONDITIONS IMPOSED BY OUR PRINCIPALS, COOPERATING BROKERS, BUYERS, TENANTS AND OTHER PARTIES WHO RECEIVE THIS DOCUMENT SHOULD NOT RELY ON IT, BUT SHOULD USE IT AS A STARTING POINT OF ANALYSIS, AND SHOULD INDEPENDENTLY CONFIRM THE ACCURACY OF THE INFORMATION CONTAINED HEREIN THROUGH A DUE DILIGENCE REVIEW OF THE BOOKS, RECORDS, FILES AND DOCUMENTS THAT CONSTITUTE RELIABLE SOURCES OF THE INFORMATION DESCRIBED HEREIN. LOGOS ARE FOR IDENTIFICATION PURPOSES ONLY AND MAY BE TRADEMARKS OF THEIR RESPECTIVE COMPANIES. NAI CAPITAL, INC. CA BRE LIC. #01990696.

1,163 SF RETAIL SPACE



FOR LEASE



POPULATION

	1 MILE	3 MILES	5 MILES
Total Population	12,858	56,744	87,778
Average Age	44	43	42
Average Age (Male)	42	42	41
Average Age (Female)	45	44	43

HOUSEHOLDS & INCOME

	1 MILE	3 MILES	5 MILES
Total Households	4,606	20,515	31,038
# of Persons per HH	2.8	2.8	2.8
Average HH Income	\$99,066	\$99,262	\$104,278
Average House Value	\$453,468	\$436,608	\$459,693

Demographics data derived from AlphaMap



COMMERCIAL REAL ESTATE SERVICES, WORLDWIDE

www.naicapital.com

Steve Liu

Executive Vice President | 949.468.2385 | C: 714.349.3547
sliu@naicapital.com | CalDRE #01323150

Enrique Solis

Vice President | 909.243.7606 | C: 760.409.3010
enrique.solis@naicapital.com | CalDRE #02082274

Nikki Liu

Senior Associate | 949.468.2386 | C: 818.744.339
nliu@naicapital.com | CalDRE #02038755

NO WARRANTY, EXPRESS OR IMPLIED, IS MADE AS TO THE ACCURACY OF THE INFORMATION CONTAINED HEREIN. THIS INFORMATION IS SUBMITTED SUBJECT TO ERRORS, OMISSIONS, CHANGE OF PRICE, RENTAL OR OTHER CONDITIONS, WITHDRAWAL WITHOUT NOTICE, AND IS SUBJECT TO ANY SPECIAL LISTING CONDITIONS IMPOSED BY OUR PRINCIPALS, COOPERATING BROKERS, BUYERS, TENANTS AND OTHER PARTIES WHO RECEIVE THIS DOCUMENT SHOULD NOT RELY ON IT, BUT SHOULD USE IT AS A STARTING POINT OF ANALYSIS, AND SHOULD INDEPENDENTLY CONFIRM THE ACCURACY OF THE INFORMATION CONTAINED HEREIN THROUGH A DUE DILIGENCE REVIEW OF THE BOOKS, RECORDS, FILES AND DOCUMENTS THAT CONSTITUTE RELIABLE SOURCES OF THE INFORMATION DESCRIBED HEREIN. LOGOS ARE FOR IDENTIFICATION PURPOSES ONLY AND MAY BE TRADEMARKS OF THEIR RESPECTIVE COMPANIES. NAI CAPITAL, INC. CA BRE LIC. #01990696.