



**CEDARLAND**  
DEVELOPMENT GROUP



**WATERFRONT  
VILLAGE CENTER**

50/60 Lakefront Blvd  
Buffalo, NY 14202

**KEVIN DAGHER**

(716) 880 - 7395

kevindag@cedarlanddev.com

[www.cedarlanddevelopment.com](http://www.cedarlanddevelopment.com)



**WATERFRONT  
VILLAGE CENTER**





Waterfront Village Center is a prestigious commercial office building with premier tenants in Buffalo, NY. Sitting directly on the water you can expect modern office spaces suited to your business featuring breathtaking views of Lake Erie. Waterfront Village accommodates its tenants with easy accessible parking, outdoor courtyard and walking path on the water, on site security, a market cafe with fresh healthy food options, large atrium with relaxing open lounge areas and a shared conference room.

## BUILDING SPECIFICATIONS

Building Type	Office
Building Height	3 Stories
Building Class	B
Building Size	133,000 SF
Year Built/ Renovated	1983/1991
Typical Floor Size	44,333 SF



**CEDARLAND - BUILDING 40 - SUITES 201 & 202 - SCHEMATIC FLOOR PLANS**

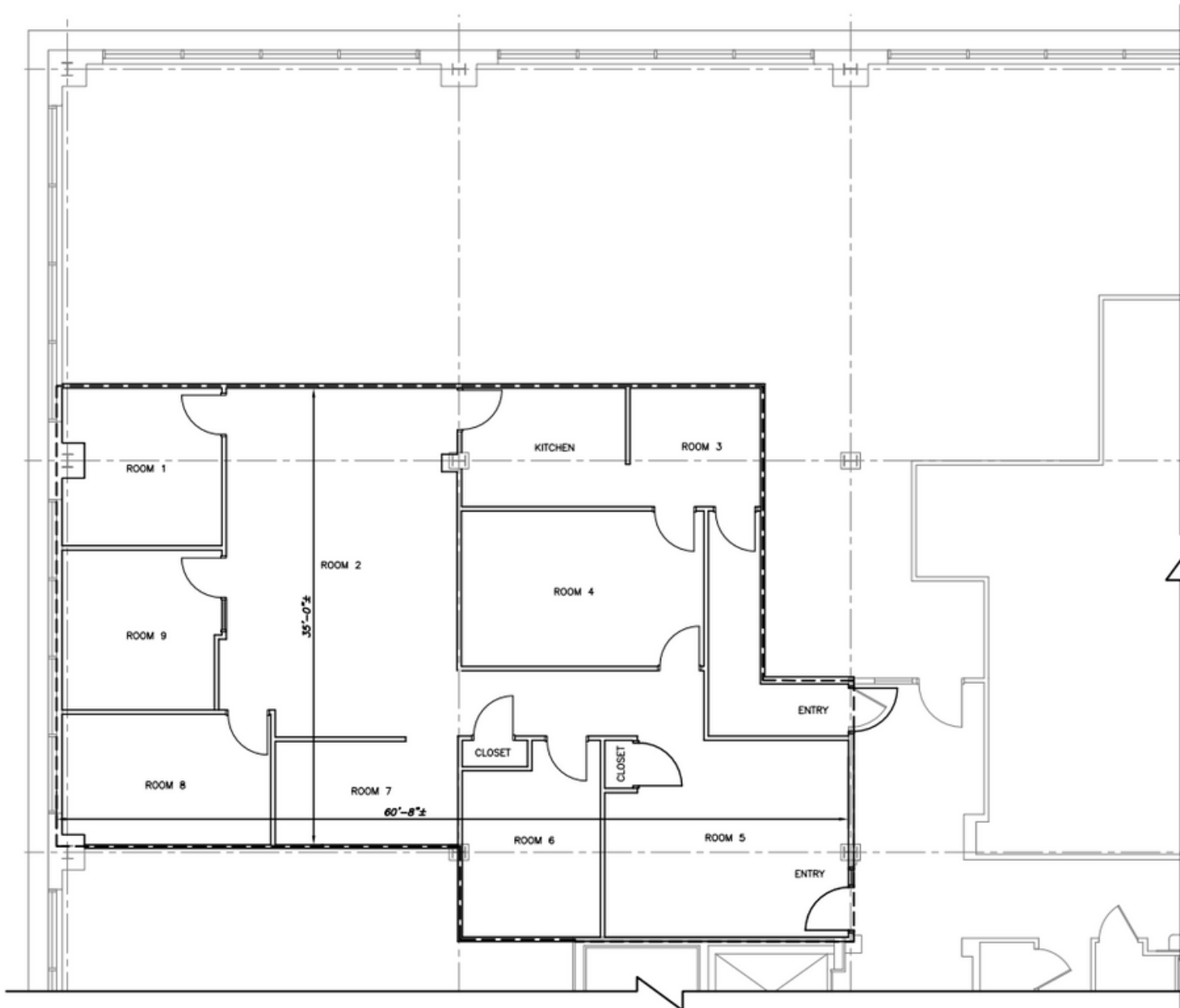


# WATERFRONT VILLAGE CENTER

40 LA RIVIERE - SUITE 202







SUITE 200  
2,640 RSF

**General Notes**

ORIGINAL DRAWINGS DATED 1980  
DIMENSIONS SHOWN THROUGHOUT  
THESE DRAWINGS ARE FOR  
INFORMATIONAL PURPOSES ONLY.  
CONTRACTOR SHALL FIELD VERIFY  
ALL DIMENSIONS PRIOR TO MAKING  
ANY MODIFICATIONS TO ANY  
OCCUPIABLE SPACE.

No.	Revision/Issue	Date

**Lu Engineers**  
LU ENGINEERS  
50 LAKEFRONT BOULEVARD  
SUITE 212  
BUFFALO, NEW YORK 14202

**Project Name and Address**  
BUILDING 50  
SUITE 200  
Turner Construction

Project	BLDG. 50	Sheet	A-201
Date	2/2018		
Scale	1/4" = 1'-0"		



# WATERFRONT VILLAGE CENTER

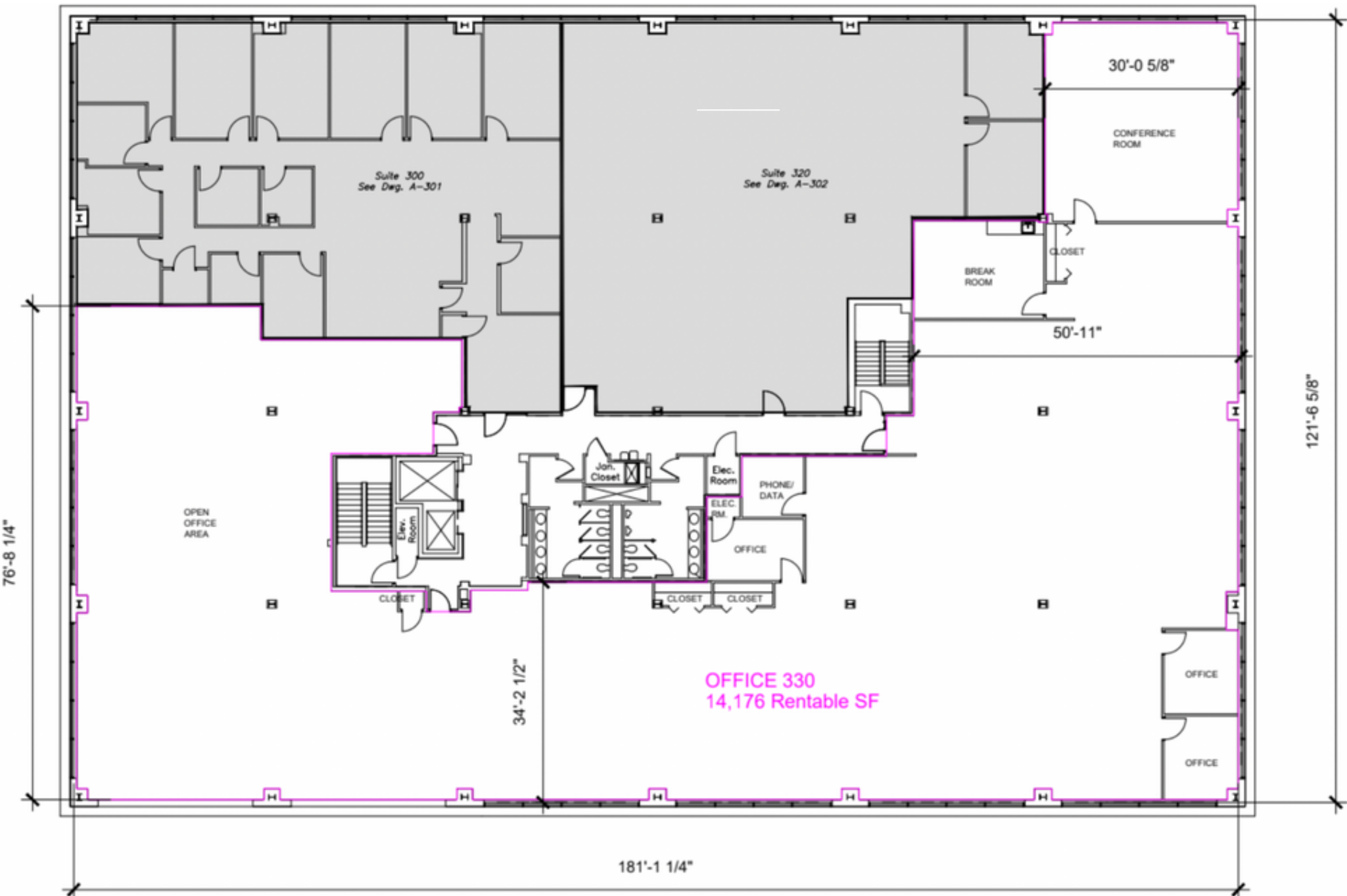
50 LAKEFRONT-SUITE 200



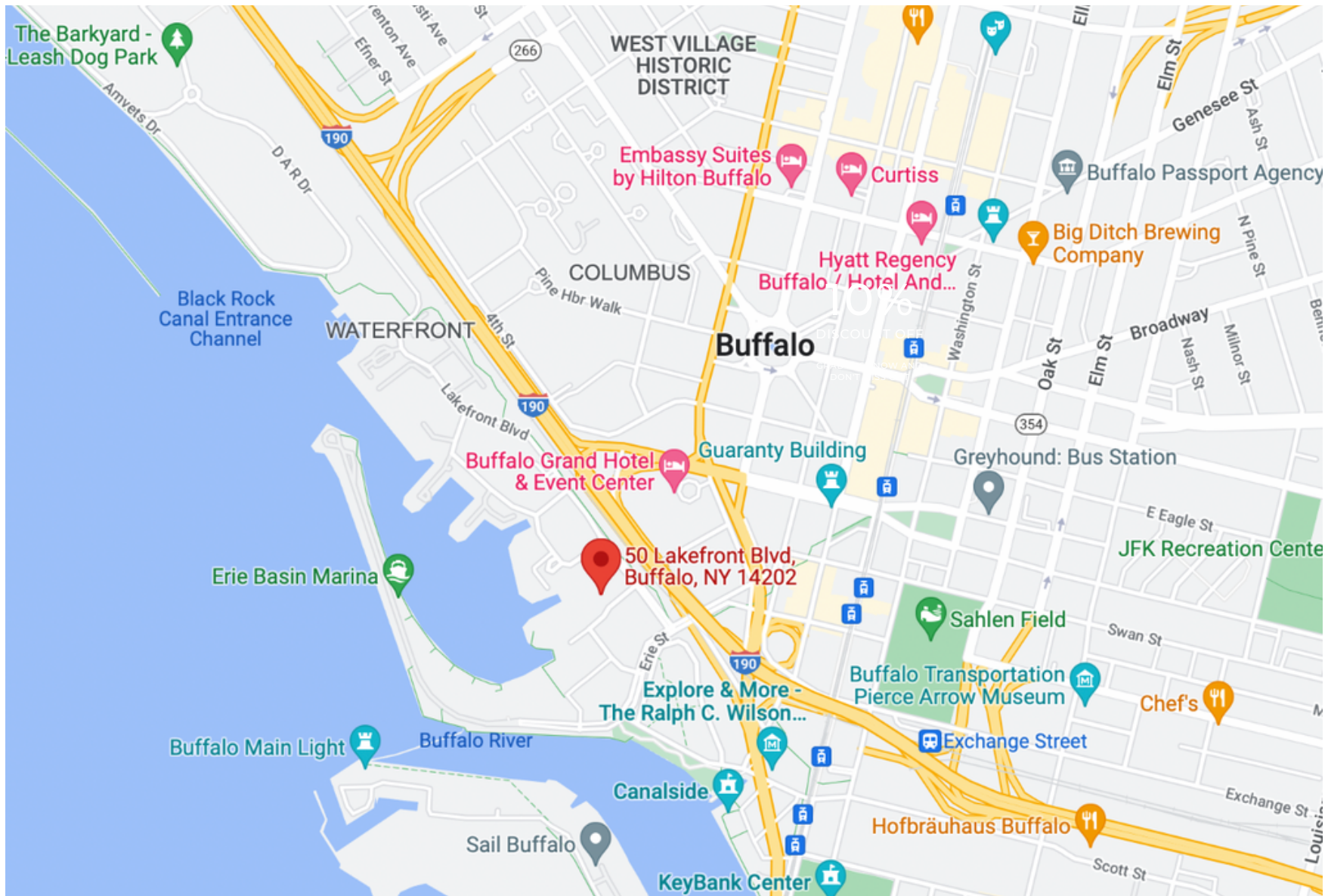


# WATERFRONT VILLAGE CENTER

50 LAKEFRONT - SUITE 330  
FLOOR PLAN







Waterfront Village Center is immediately accessible from the NYS Thruway. Tenants can enjoy walking along Canalside, the small boat harbor, with Sahlen Field and Key Bank Center nearby. Multiple stops for the Buffalo metro rail sit alongside Buffalo's best hotels and restaurants.



# WATERFRONT VILLAGE CENTER



**FOR MORE INFORMATION**

(716) 880 - 7395

[cedarlanddevelopment.com](http://cedarlanddevelopment.com)

[kevindag@cedarlanddev.com](mailto:kevindag@cedarlanddev.com)



**WATERFRONT**  
VILLAGE CENTER



**CEDARLAND**  
DEVELOPMENT GROUP