

FOR SALE:

Esquire Court

📍 Howard County, Maryland

LOCATION » 7310 Esquire Ct #5B | Elkridge, MD 21075



AVAILABLE

3,298 sf

PURCHASE PRICE:

\$709,070.00 (\$215/sf)

REAL ESTATE TAXES:

To be provided

CONDO FEES:

To be provided



Dave Sciamarelli » Vice President 973-713-1846 dsciamarelli@key-cre.com

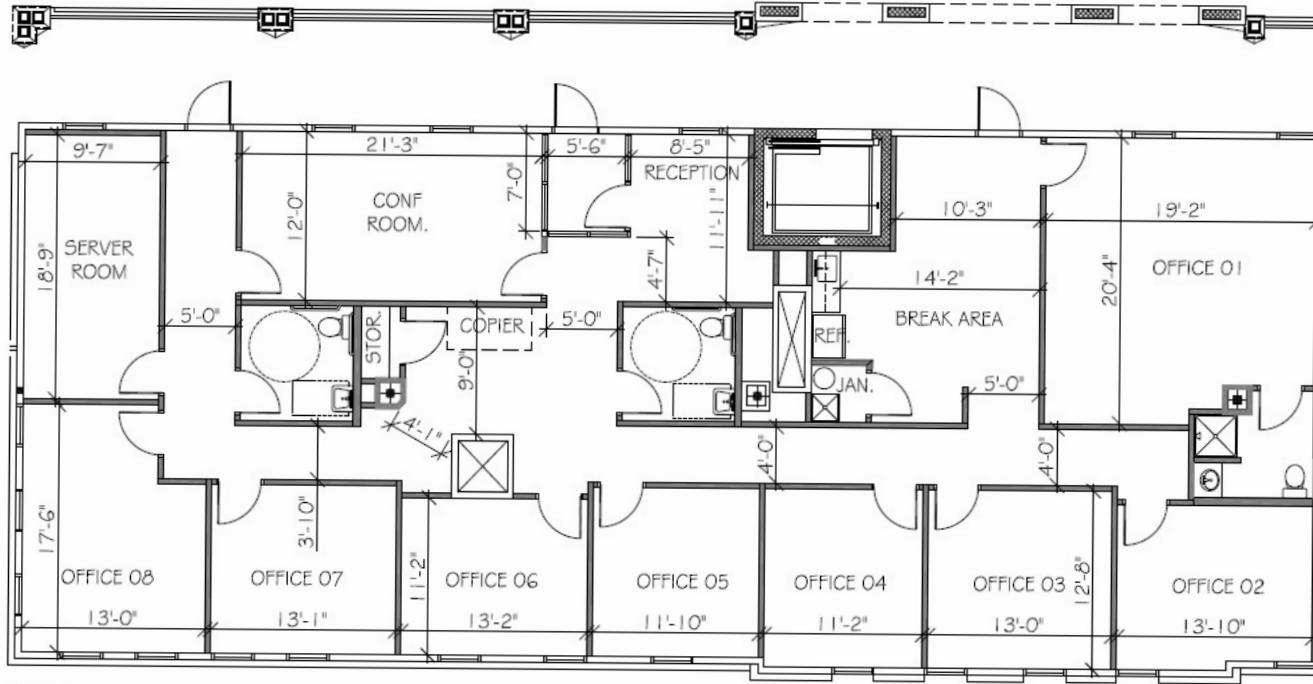
KEY COMMERCIAL REAL ESTATE • 410-872-0400 • 10500 Little Patuxent Parkway, Suite 460 | Columbia, Maryland 21044

Key-CRE.com

FOR SALE: Esquire Court

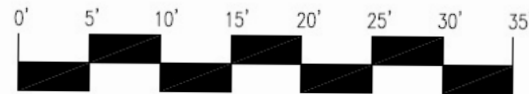
📍 Howard County, Maryland

LOCATION » 7310 Esquire Ct #5B | Elkridge, MD 21075



NOTES:
*CEILING HEIGHT 9'-0"
*CLEAR HT. TO FRAMING AB. = 11'-8"

SECOND FLOOR PLAN



Dave Sciamarelli » Vice President 973-713-1846 dsciamarelli@key-cre.com

KEY COMMERCIAL REAL ESTATE • 410-872-0400 • 10500 Little Patuxent Parkway, Suite 460 | Columbia, Maryland 21044

Key-CRE.com