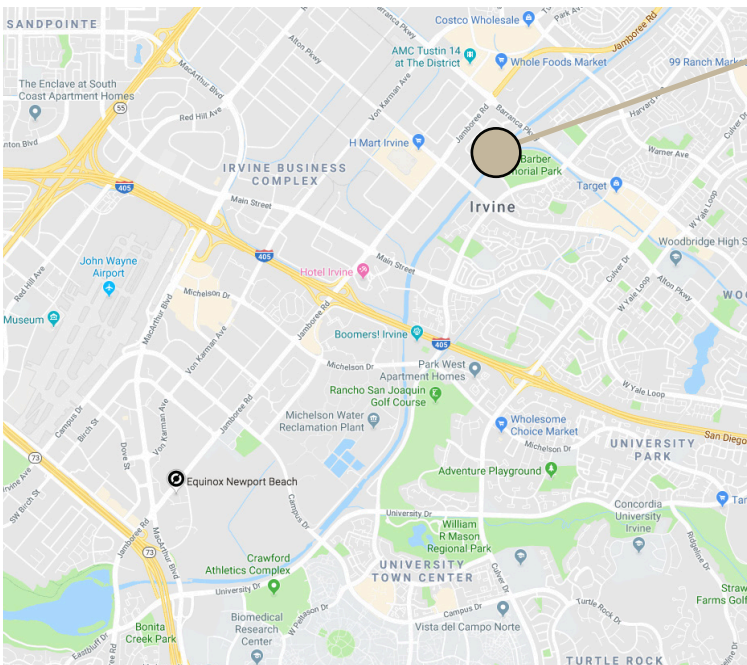




1 & 5 CORPORATE PARK > IRVINE

FOR LEASE > 1,500 - 3,671 SF



## PROPERTY OVERVIEW

- ▶ Two-story campus environment
- ▶ Located near the Tustin Legacy (over 35 restaurants, Target, Costco, Whole Foods, Planet Fitness, Union Market, AMC Theatres, and more)
- ▶ The property provides great access to major freeways (5, 55 405, and 241 Toll Road), and is only 3.5 miles to John Wayne Airport
- ▶ Abundant surface parking



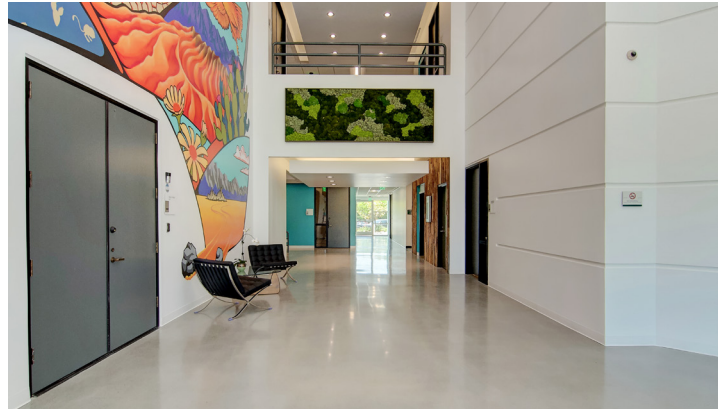
WINDWATER  
REAL ESTATE

powered by  
exp

Evangelos Karantonis

949.444.1716 | [ekarantonis@windwater.com](mailto:ekarantonis@windwater.com) | Lic. #01905849





## 1 CORPORATE PARK

SUITE	SIZE	RATE	DESCRIPTION
112	+/- 1,500 - 3,671 SF	CALL FOR DETAILS	Divisible with five private offices and conference room.
150	2,600 SF	CALL FOR DETAILS	Five offices, conference room, reception, kitchen and workroom.

## 5 CORPORATE PARK

SUITE	SIZE	RATE	DESCRIPTION
260	3,508 SF	CALL FOR DETAILS	6 private offices, conference room, reception and kitchen, open area for cubicles.



WINDWATER  
REAL ESTATE

powered by 

Evangelos Karantonis

949.444.1716 | [ekarantonis@windwater.com](mailto:ekarantonis@windwater.com) | Lic. #01905849

# 1 CORPORATE PARK

## SUITE 112

**Size:** +/- 1,500 - 3,671 SF

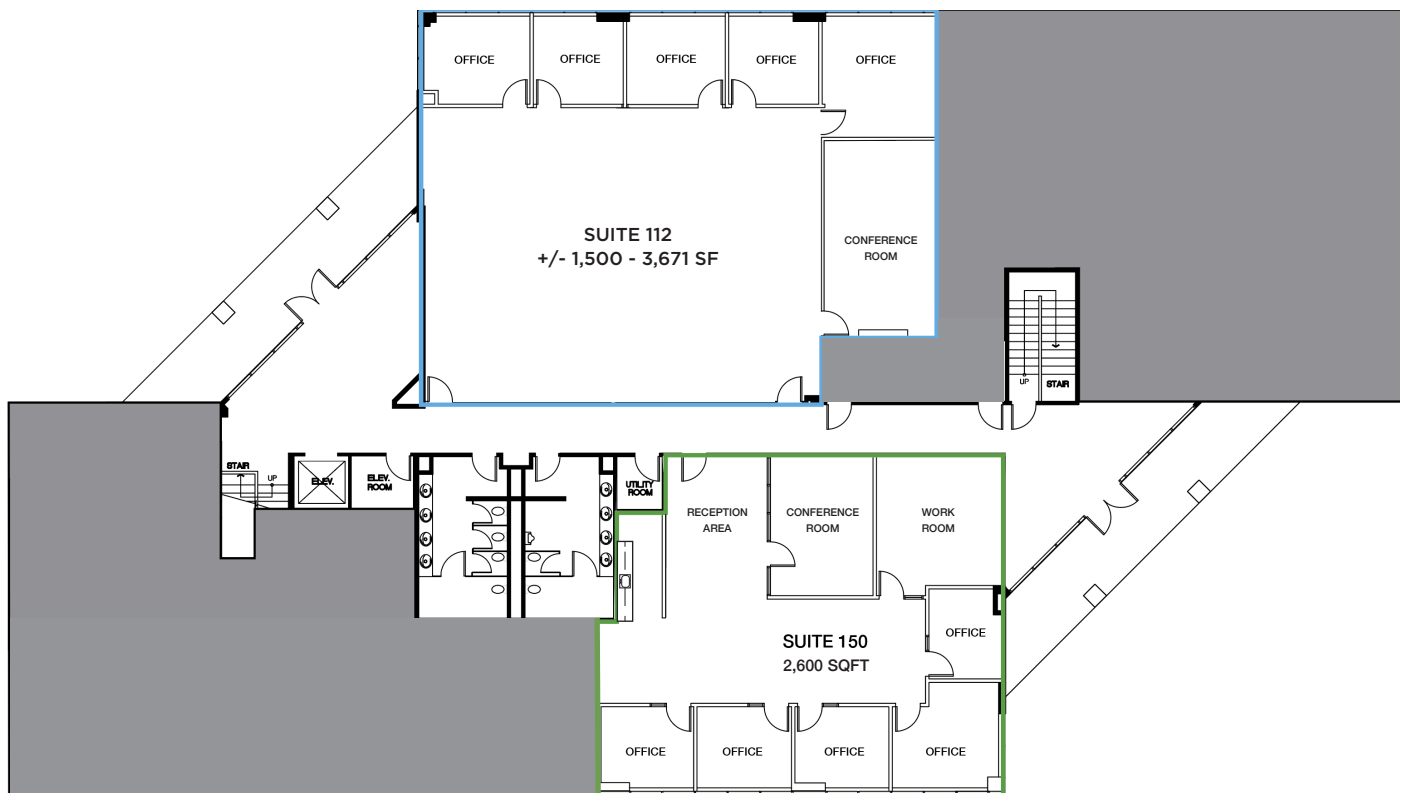
**Rate:** CALL FOR DETAILS

\*potentially divisible

## SUITE 150

**Size:** 2,600 SF

**Rate:** CALL FOR DETAILS



WINDWATER  
REAL ESTATE

powered by **exp**

Evangelo Karantonis

949.444.1716 | [ekarantonis@windwater.com](mailto:ekarantonis@windwater.com) | Lic. #01905849

## 5 CORPORATE PARK

---

### SUITE 260

**Size:** 3,508 SF

**Rate:** CALL FOR DETAILS

