

# 222,953 SF

Industrial Space For Lease



## Prologis Great Southwest 60



2951 Great Southwest Parkway  
Grand Prairie, TX 75050 USA

### LOCATION

- Easy access to major thoroughfares including SH-360, SH-161, SH-183, and I-30

### FACILITY

- 222,953 sf available
- 9,740 sf office
- 517 sf warehouse restrooms
- 24' clear height
- 40'-6" x 43'-4" typical bay spacing
- 28 (9' x 10') overhead dock doors with levelers
- 4 (10' x 10') overhead dock doors with ramp
- Fully sprinklered
- 283 auto parking spaces
- 46 trailer spaces
- 28 tractor spaces
- Fenced truck court and trailer parking
- Power: 3 phase/480V/2600 amps

### ADVANTAGES AND AMENITIES

- Access to the [Prologis Essentials](#) platform, which includes:
  - [Operations Essentials](#)
  - [Energy + Sustainability Essentials](#)
  - [Mobility Essentials](#)
  - [Workforce Essentials](#)



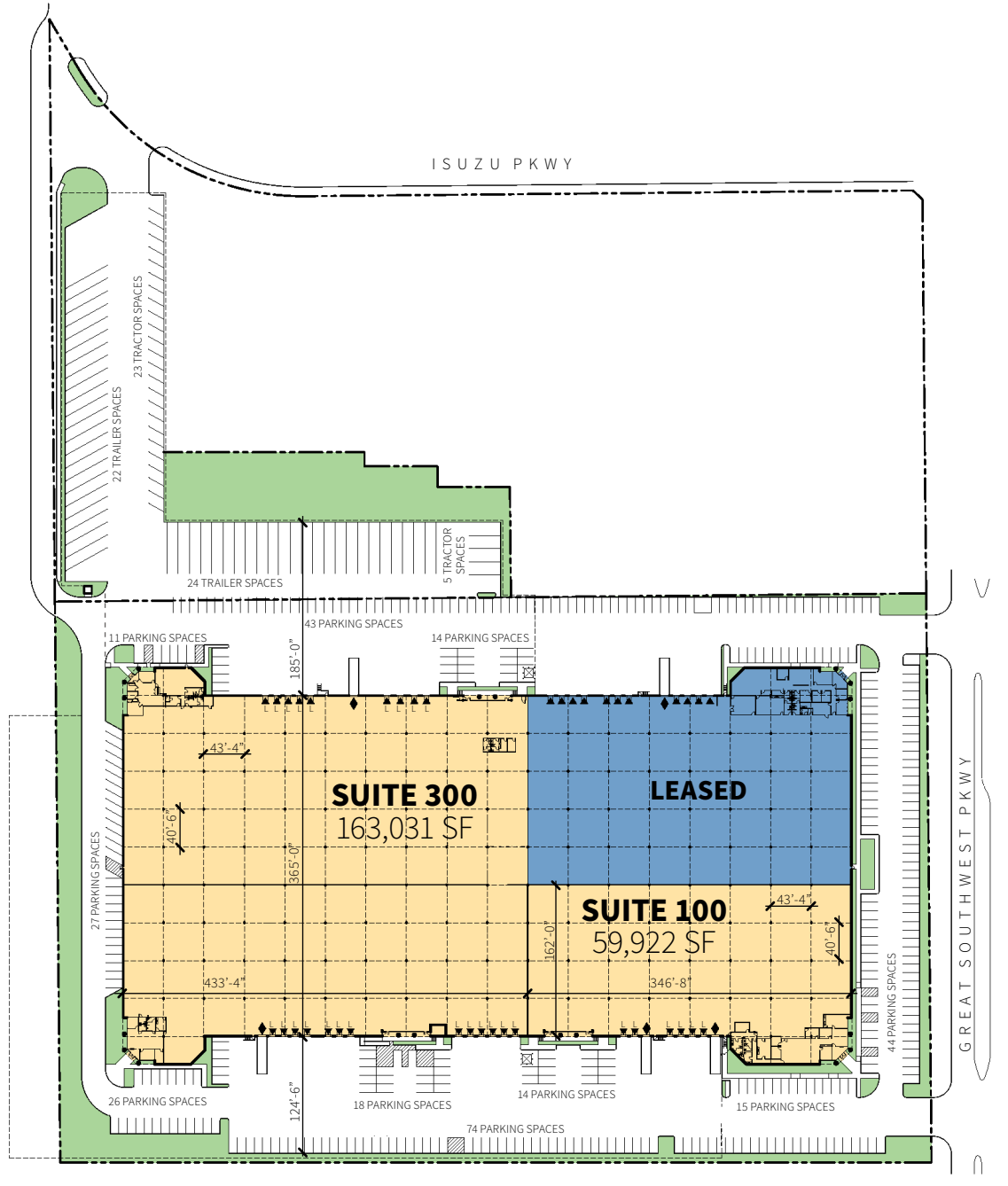
**Prologis Essentials: your single-source service for efficient move-in and operations at [prologisessentials.com](https://prologisessentials.com)**

# 222,953 SF

Industrial Space For Lease



## Prologis Great Southwest 60



**Lee & Associates**  
Mark Graybill, SIOR, CCIM  
mgraybill@lee-associates.com  
ph +1 972 934 4007  
cell +1 214 914 5537  
14950 Quorum Drive  
Suite 100  
Dallas, TX 75254 USA

**Lee & Associates**  
Reed Parker, SIOR  
rparker@lee-associates.com  
ph +1 972 934 4020  
cell +1 214 558 5558  
14950 Quorum Drive  
Suite 100  
Dallas, TX 75254 USA

**Lee & Associates**  
RJ Flores  
rjflores@lee-associates.com  
ph +1 972 934 4055  
cell +1 310 968 9362  
14950 Quorum Drive  
Suite 100  
Dallas, TX 75254 USA

**Prologis**  
Ryan McNaughton  
rmcnaughton@prologis.com  
ph +1 972 884 9218  
cell +1 214 673 9489  
2021 McKinney Avenue  
Suite 1050  
Dallas, TX 75201 USA

# 222,953 SF

Industrial Space For Lease



## Prologis Great Southwest 60



### Lee & Associates

Mark Graybill, SIOR, CCIM  
mgraybill@lee-associates.com  
ph +1 972 934 4007  
cell +1 214 914 5537  
14950 Quorum Drive  
Suite 100  
Dallas, TX 75254 USA

### Lee & Associates

Reed Parker, SIOR  
rparker@lee-associates.com  
ph +1 972 934 4020  
cell +1 214 558 5558  
14950 Quorum Drive  
Suite 100  
Dallas, TX 75254 USA

### Lee & Associates

RJ Flores  
rjflores@lee-associates.com  
ph +1 972 934 4055  
cell +1 310 968 9362  
14950 Quorum Drive  
Suite 100  
Dallas, TX 75254 USA

### Prologis

Ryan McNaughton  
rmcnaughton@prologis.com  
ph +1 972 884 9218  
cell +1 214 673 9489  
2021 McKinney Avenue  
Suite 1050  
Dallas, TX 75201 USA

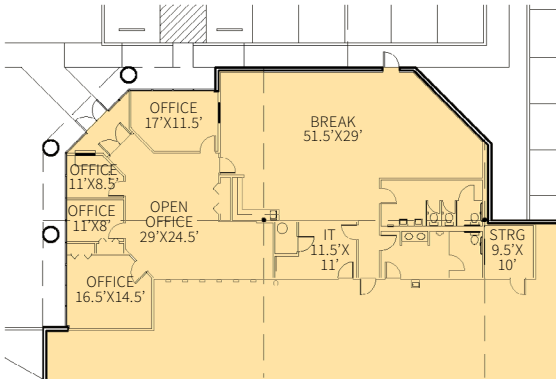
# 222,953 SF

Industrial Space For Lease

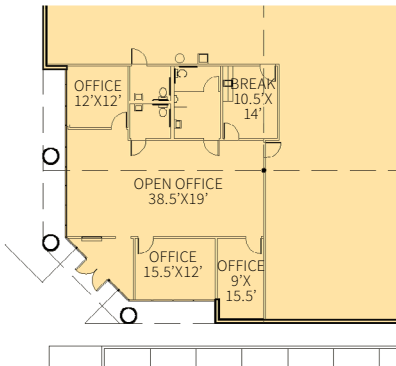


## Prologis Great Southwest 60

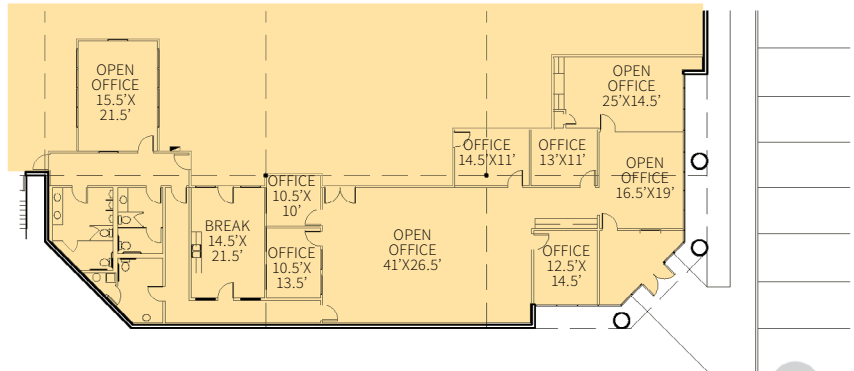
NW Office | 3,442 sf



SW Office | 1,834 sf



SE Office | 4,464 sf



### Lee & Associates

Mark Graybill, SIOR, CCIM  
mgraybill@lee-associates.com  
ph +1 972 934 4007  
cell +1 214 914 5537  
14950 Quorum Drive  
Suite 100  
Dallas, TX 75254 USA

### Lee & Associates

Reed Parker, SIOR  
rparker@lee-associates.com  
ph +1 972 934 4020  
cell +1 214 558 5558  
14950 Quorum Drive  
Suite 100  
Dallas, TX 75254 USA

### Lee & Associates

RJ Flores  
rjflores@lee-associates.com  
ph +1 972 934 4055  
cell +1 310 968 9362  
14950 Quorum Drive  
Suite 100  
Dallas, TX 75254 USA

### Prologis

Ryan McNaughton  
rmcnaughton@prologis.com  
ph +1 972 884 9218  
cell +1 214 673 9489  
2021 McKinney Avenue  
Suite 1050  
Dallas, TX 75201 USA