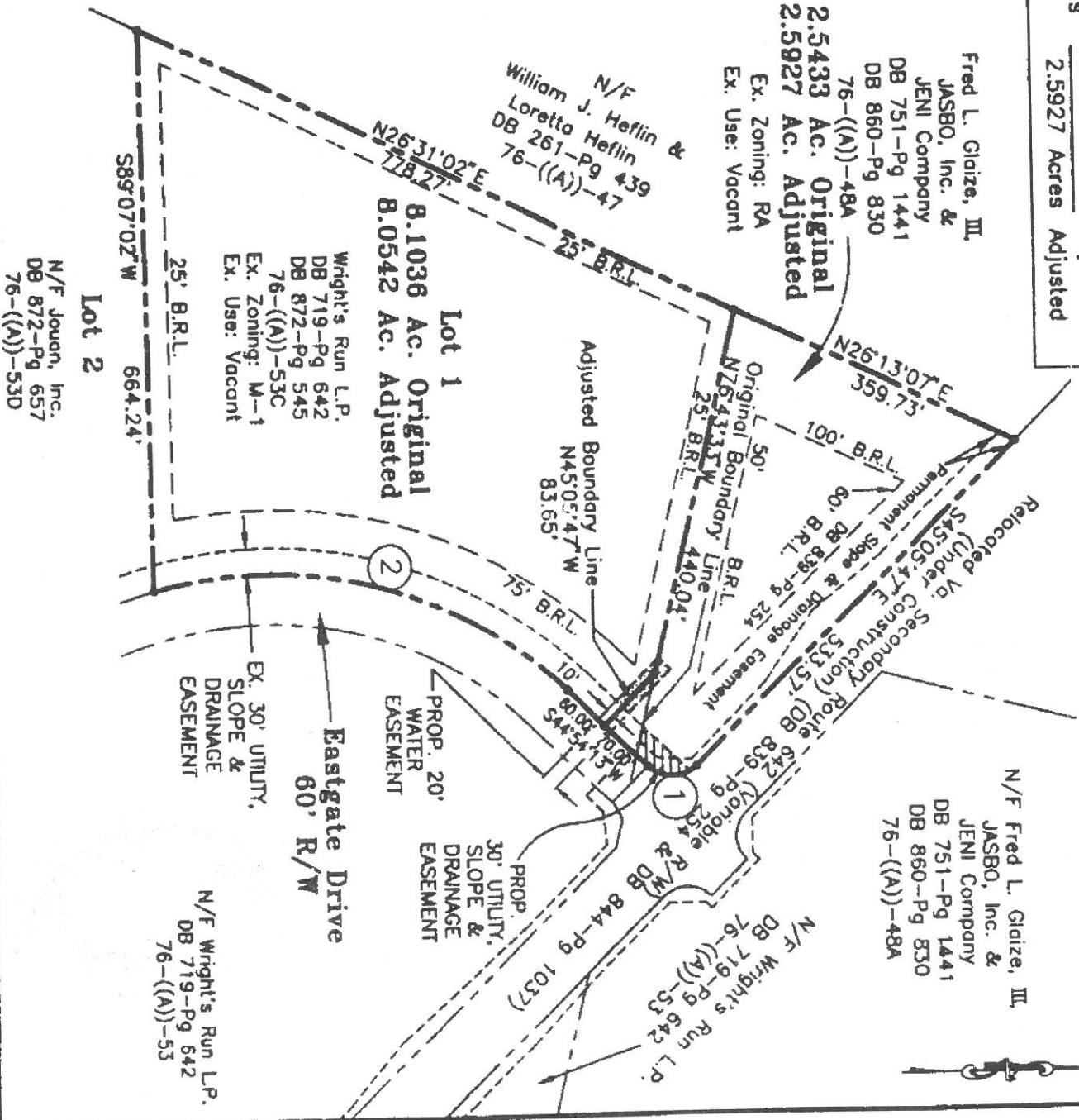


BK 876 PG 1069

Boundary Adjustment Tabulations		CURVE	RADIUS	LENGTH	TANGENT	CHORD	BEARING	DELTA
Lot 1	8.1036 Acres Original -0.0494 Acres Adjustment	1	40.00'	62.83'	40.00'	56.57'	S00°05'47"E	90°00'00"
Gloize et als	8.0542 Acres Adjusted 2.5433 Acres Original +0.0494 Acres Adjustment 2.5927 Acres Adjusted	2	500.00'	524.01'	288.95'	500.35'	S14°52'49"W	60°02'49"

B.R.L. = Building Restriction Line



**Boundary Line Adjustment**  
Between the Lands of  
**Fred L. Glaize, III, JASBO, Inc. & JENI Company**  
and  
**Wright's Run L.P.**  
Frederick County, Virginia

Shownee Magisterial District  
DATE: February 21, 1997  
SCALE: 1" = 200'  
FILE#: "9125-rw" dwg

gilbert w. difford & associates, inc.  
ENGINEERS - LAND PLANNERS - SURVEYORS  
200 North Cameron Street  
Winchester, Virginia 22601  
(540) 667-2139

150-C Olde Grassmich Drive  
Fredericksburg, Virginia 22401  
(540) 886-2115

SHEET 2 OF 2

Virginia: Frederick County, SCT.  
This instrument of writing was produced  
to me on the 28th day of March  
1997 at 1:41 PM and with certificate  
of acknowledgment thereto annexed was  
admitted to record.

*George B. Whitlatch*  
CLERK