

AXIS 360

COMMERCIAL REAL ESTATE

3001 ½ Gill St.
Suite A
Bloomington, IL
61704
axis360.co



CONDO SIZE
5,379 SF

YEAR BUILT
2004

LEASE TYPE
Modified Gross

LEASE RATE
\$17.00/SF

SALES PRICE
\$729,900

TAXES (2022)
\$15,758

131 N. WILLIAMSBURG DRIVE BLOOMINGTON | OFFICE | **SALE OR LEASE**

Welcome to a superb opportunity in the heart of our thriving central business district. This spacious commercial office condo is the ideal choice for businesses seeking a central location with a balance of affordability and quality. With its mid-market pricing and tasteful finishes, this unit reflects the essence of Midwest professionalism. Designed for tech company Aerotek, the layout ensures efficiency and functionality while allowing you to infuse your unique brand and culture into the space.

Enjoy the benefits of a central location, where convenience meets accessibility, and make your mark in the heartland of business success. Whether you're looking to buy or lease, this versatile office condo is the perfect canvas to shape your vision. Contact us today to explore this promising opportunity further and elevate your business presence.

Condo Tenants:

P/L/R INSURANCE

living|alternatives
pregnancy resource center

Randolph & Associates
FAMILY DENTISTRY

Kirk W. Noraian
D.D.S., M.S., P.C.
Laser Periodontics & Dental Implants

SWANLUND
DENTISTRY
Family & Cosmetic Dentistry

Signature Dental
EXPERIENCE

ADVANCED
REHAB & SPORTS MEDICINE

The statements and figures herein, while not guaranteed, are secured from sources we believe authoritative. This information is for illustrative purposes only.

Meghan O'Neal-Rogozinski, CCIM
meghan.oneal@axis360.co
309-532-1808

Michael O'Neal
moneal@axis360.co
309-530-3591



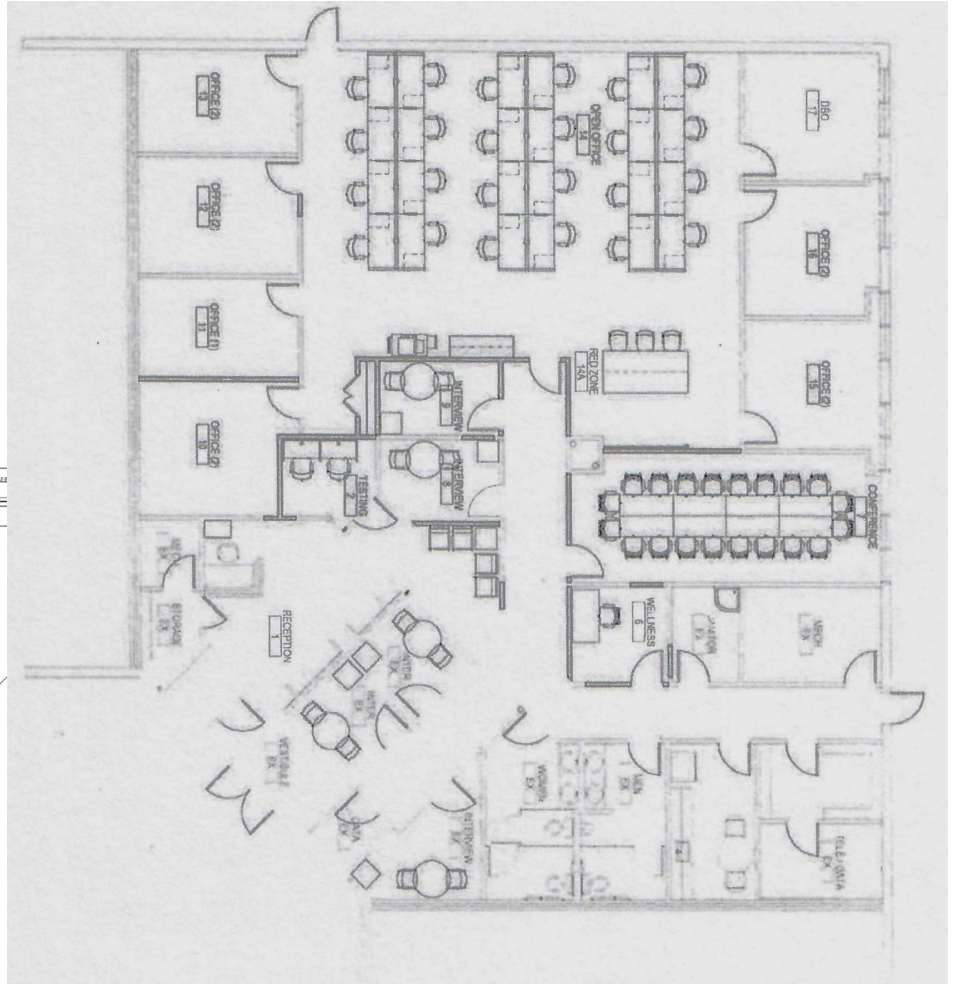
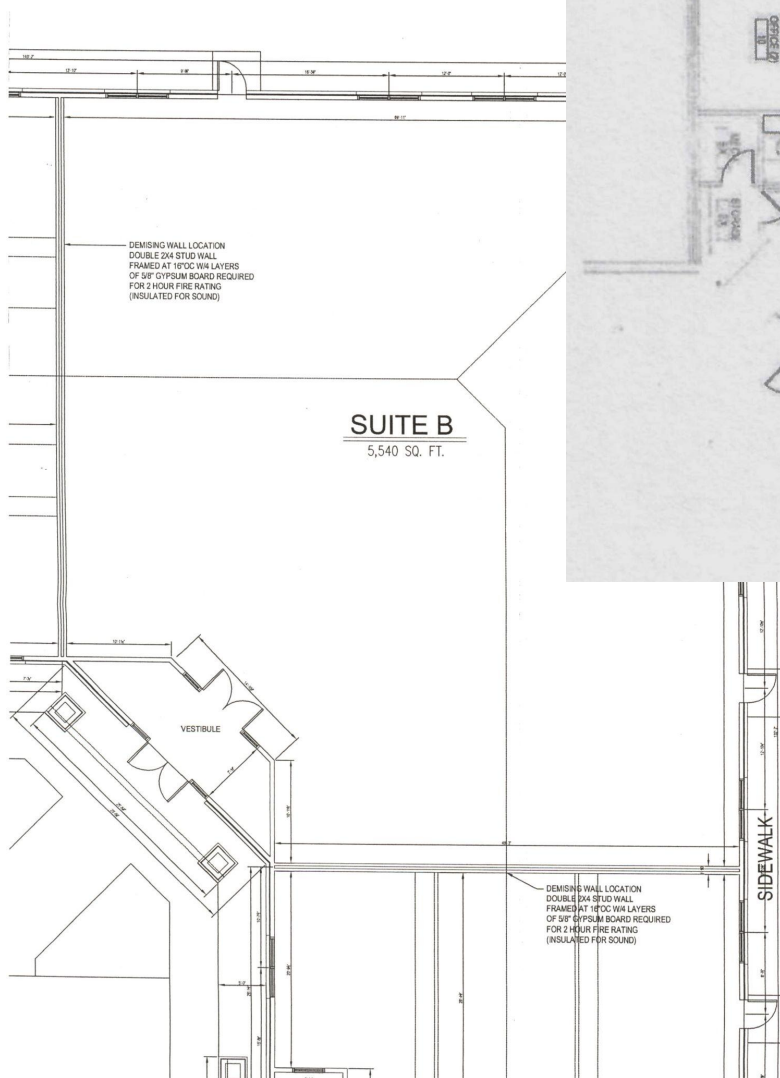


3001 1/2 Gill St. Suite A
Bloomington, IL 61704

axis360.co

131 N. Williamsburg Dr.
Bloomington, IL

Current Floor Plan



Meghan O'Neal-Rogozinski, CCIM

meghan.oneal@axis360.co

309-532-1808

Michael O'Neal

moneal@axis360.co

309-530-3591

