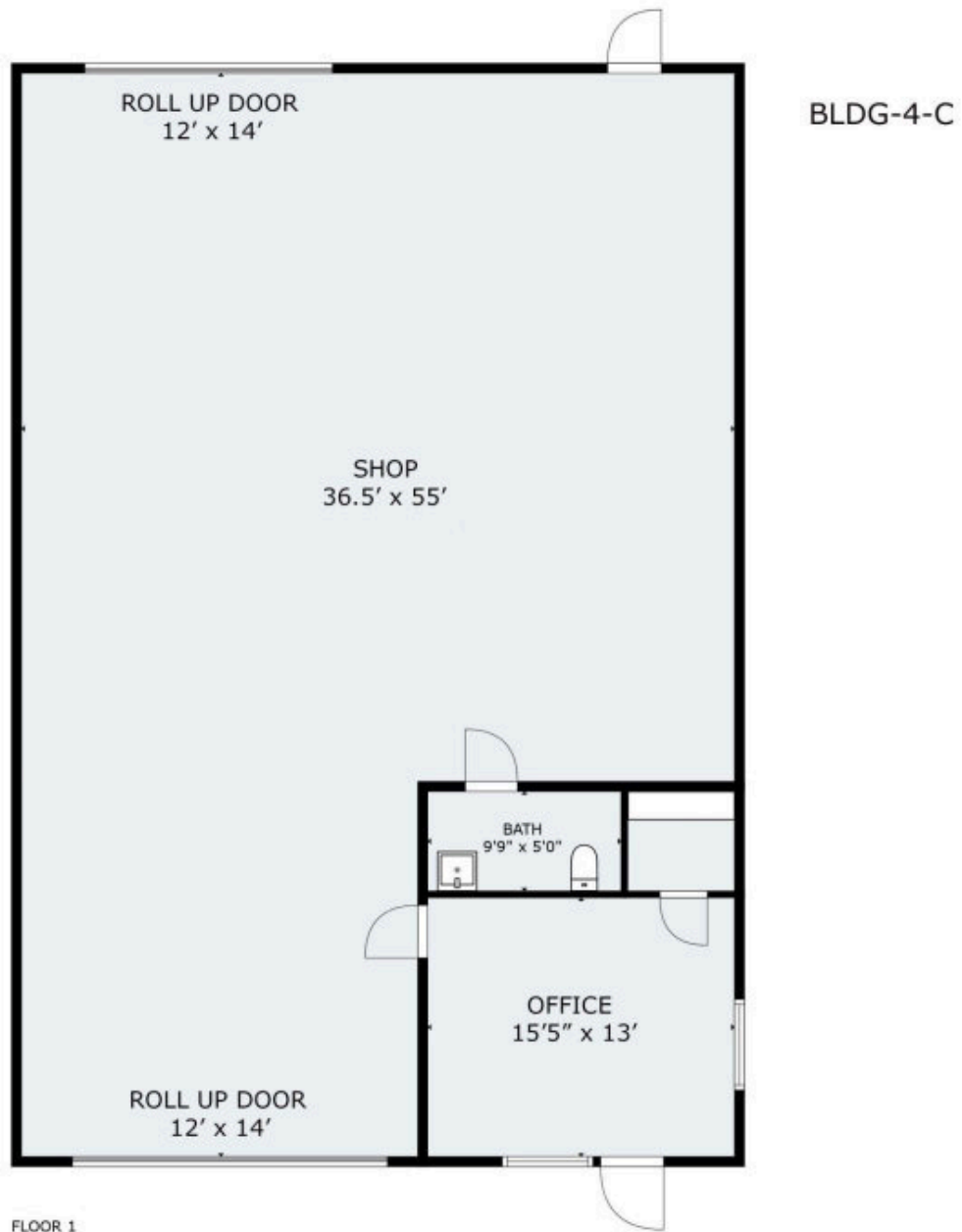




Lone Star Business Park  
2036 Seaborn Rd. Bldg. 4, Ste. C  
Ponder, TX 76259

**COMMERCIAL SPACE FOR LEASE**  
PONDER, TX



**Building 4 Suite C**  
**2000 Sq. Ft.**



Lone Star Business Park

2036 Seaborn Rd. Bldg. 4, Ste. C  
Ponder, Texas 76259

Brand new build with YARD for lease in Ponder, TX! Lone Star Business Park is the perfect spot for your commercial business! Building 4, Suite C is 2000 Sq. FT. Includes office space, storefront window, and drive-in doors. The fully fenced and gated property has additional rear parking-yard space! Buildings are equipped to handle various uses like fabrication, retail, office use, recreation, & more.

\$15/SF/YR (\$2500/month)

\$100 Flat Rate for Water per Month

Individual Electric Meters

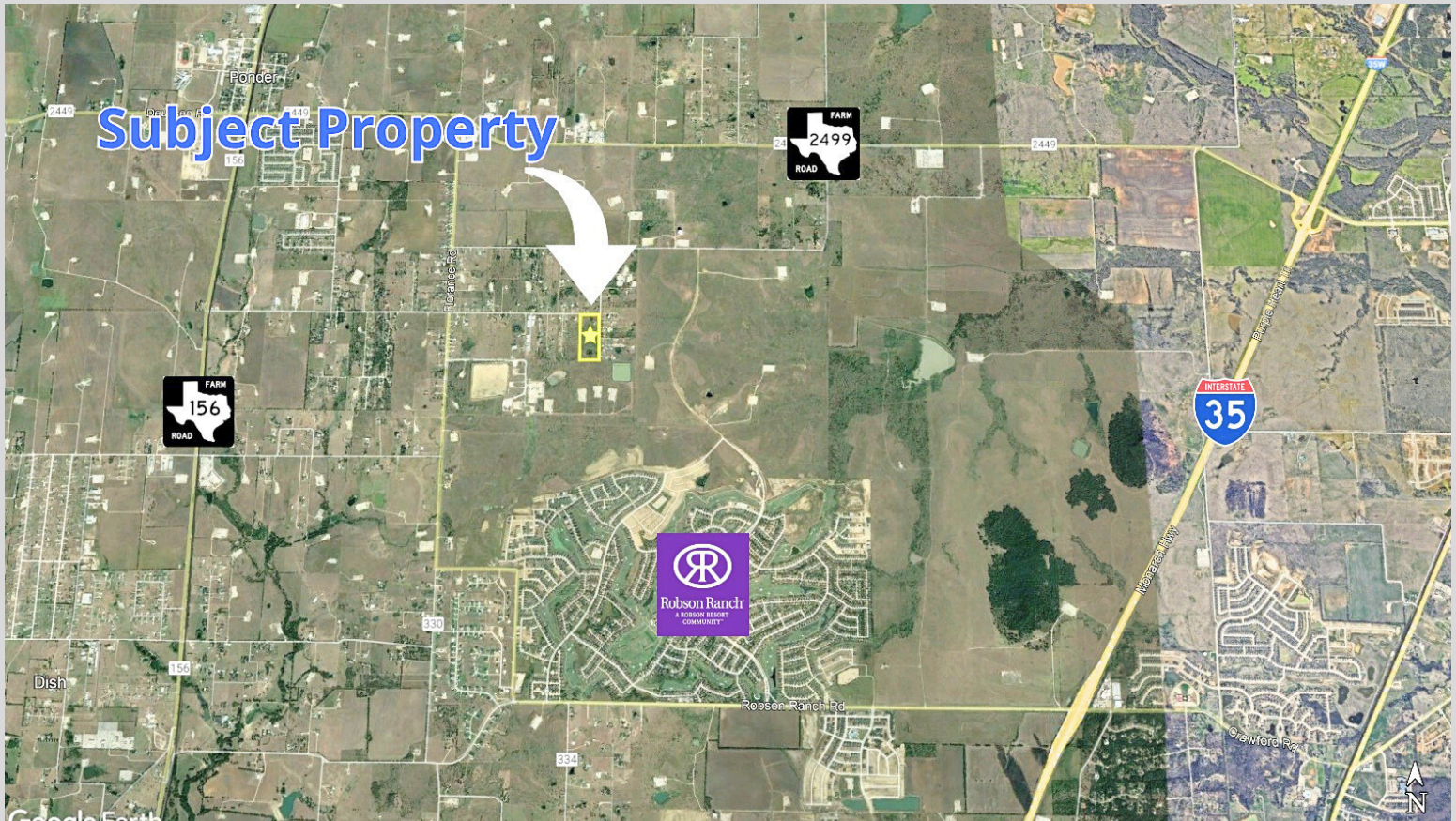
Outside City Limits

Graded YARD Space

Drive-In Doors

Store Front Office Space

Automatic Gate



**Conveniently located near FM 156 and I35W in Ponder, TX.**  
**3 miles to FM 156. 5 Miles to I35W.**



**Justin Newland**  
**940-594-9882**

[jnewland@northtexasrealestate.com](mailto:jnewland@northtexasrealestate.com)