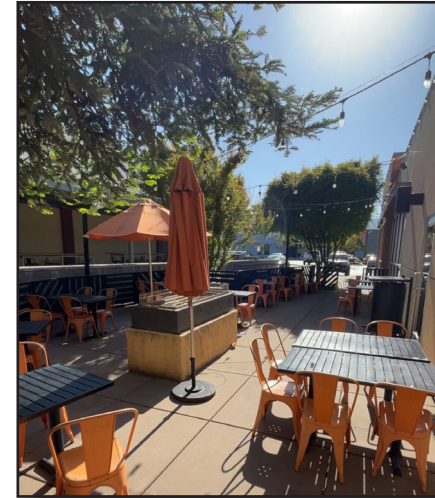


FOR LEASE MARKET/DRUG ANCHORED CENTER RARE RESTAURANT SPACE ON CLOSEST CENTER TO CAL POLY



- Rare restaurant space available at Highway 1 (Santa Rosa) & Foothill Road
- Closest Shopping Center to Cal Poly, San Luis Obispo
- Market/Drug Anchored Shopping Center
- Spaces rarely available in this center

Chris Garner
805.928.2800 ext. 104
CGarner@PacificaCRE.com
Lic #01010310



Information contained herein has been obtained from the owner of the property or from other sources deemed reliable. We have no reason to doubt its accuracy, but we do not guarantee it.

PO Box 250 | Santa Maria, CA 93456 | PacificaCommercialRealty.com

FOR LEASE 892 FOOTHILL BLVD. | SAN LUIS OBISPO, CA



PROPERTY AND LEASE DETAILS

Lease Price	+/-2,422 SF: \$4.00/SF, NNN +/-873 SF Patio: \$1.00/SF, Gross
Zoning	C-R-S (Many Allowed Uses)
Square Feet	Approximately 2,422 SF with an 873 SF patio.
Notes	A rare opportunity to lease a high-exposure former Blaze Pizza near Cal Poly. Ample onsite parking.

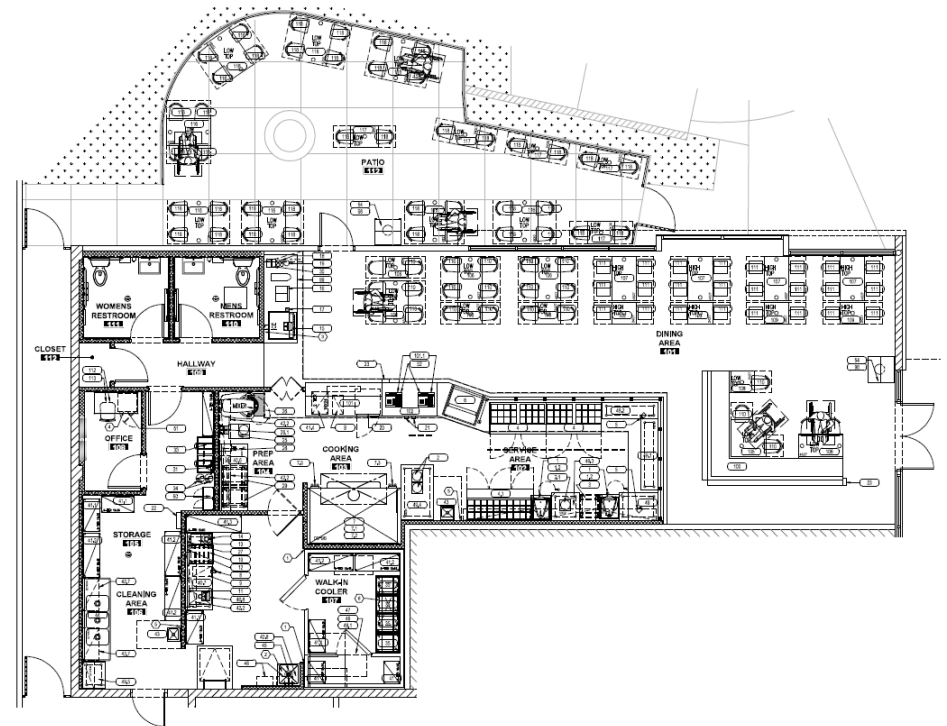
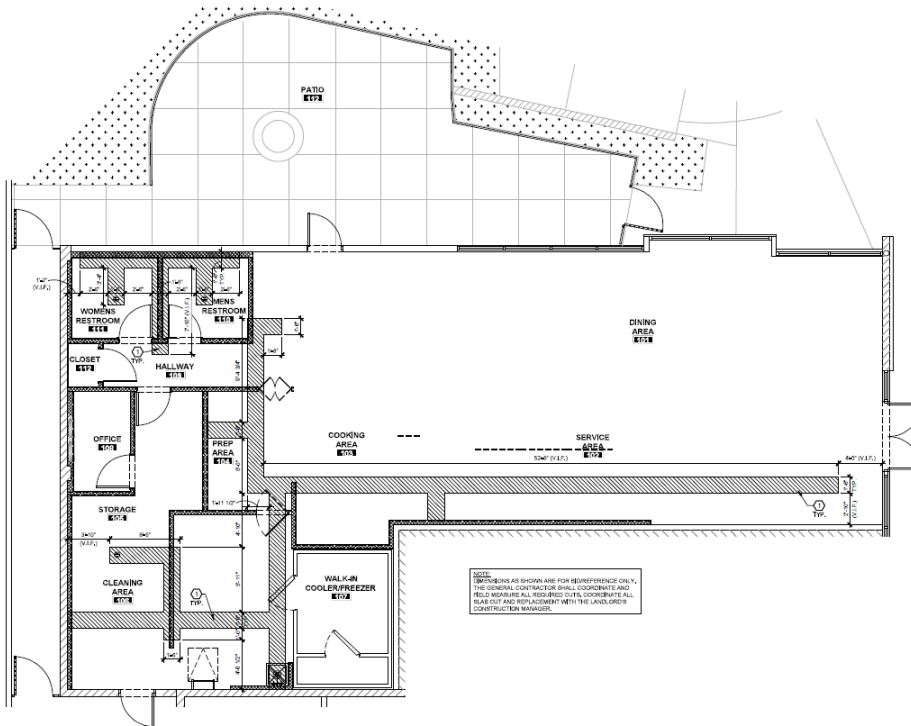
Chris Garner
805.928.2800 ext. 104
CGarner@PacificaCRE.com
Lic #01010310



PO Box 250 | Santa Maria, CA 93456 | PacificaCommercialRealty.com

Information contained herein has been obtained from the owner of the property or from other sources deemed reliable. We have no reason to doubt its accuracy, but we do not guarantee it.

FOR LEASE 892 FOOTHILL BLVD. | SAN LUIS OBISPO, CA



Chris Garner
805.928.2800 ext. 104
CGarner@PacificaCRE.com
Lic #01010310



PO Box 250 | Santa Maria, CA 93456 | PacificaCommercialRealty.com

Information contained herein has been obtained from the owner of the property or from other sources deemed reliable. We have no reason to doubt its accuracy, but we do not guarantee it.

FOR LEASE 892 FOOTHILL BLVD. | SAN LUIS OBISPO, CA



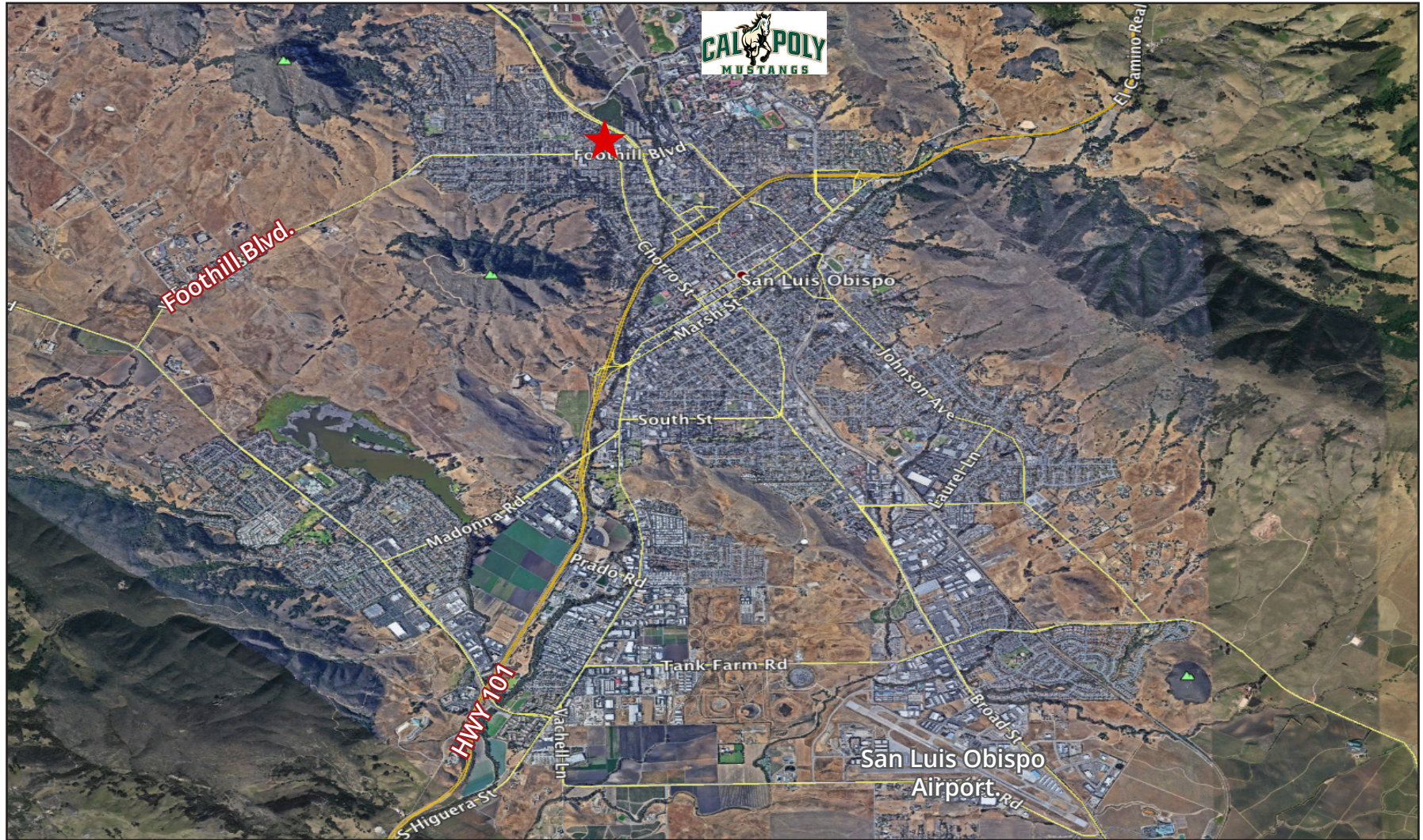
Chris Garner
805.928.2800 ext. 104
CGarner@PacificaCRE.com
Lic #01010310



PO Box 250 | Santa Maria, CA 93456 | PacificaCommercialRealty.com

Information contained herein has been obtained from the owner of the property or from other sources deemed reliable. We have no reason to doubt its accuracy, but we do not guarantee it.

FOR LEASE 892 FOOTHILL BLVD. | SAN LUIS OBISPO, CA



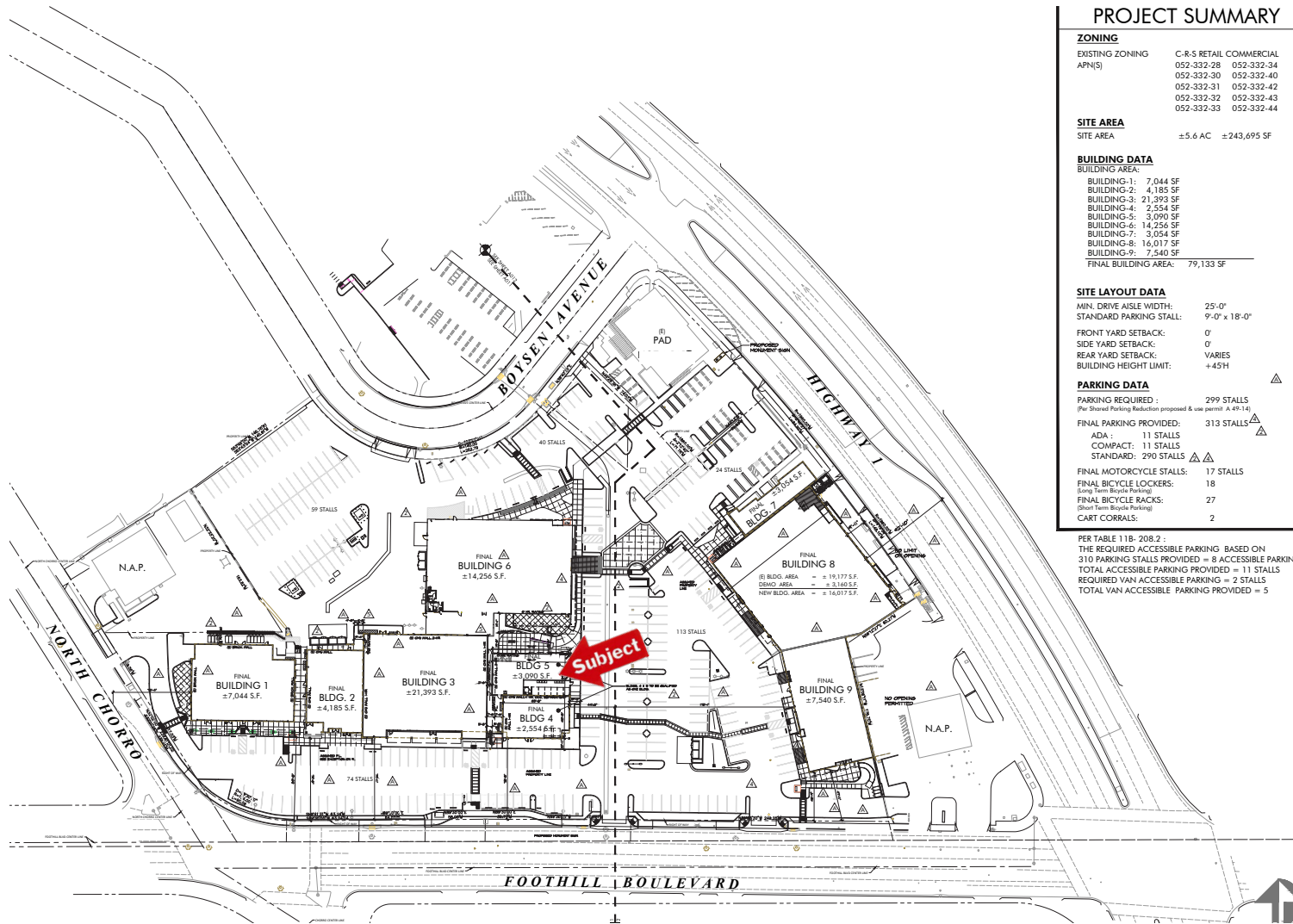
Chris Garner
805.928.2800 ext. 104
CGarner@PacificaCRE.com
Lic #01010310



PO Box 250 | Santa Maria, CA 93456 | PacificaCommercialRealty.com

Information contained herein has been obtained from the owner of the property or from other sources deemed reliable. We have no reason to doubt its accuracy, but we do not guarantee it.

FOR LEASE 892 FOOTHILL BLVD. | SAN LUIS OBISPO, CA



Chris Garner
805.928.2800 ext. 104
CGarner@PacificaCRE.com
Lic #01010310



PO Box 250 | Santa Maria, CA 93456 | PacificaCommercialRealty.com

Information contained herein has been obtained from the owner of the property or from other sources deemed reliable. We have no reason to doubt the accuracy, but we do not guarantee it.