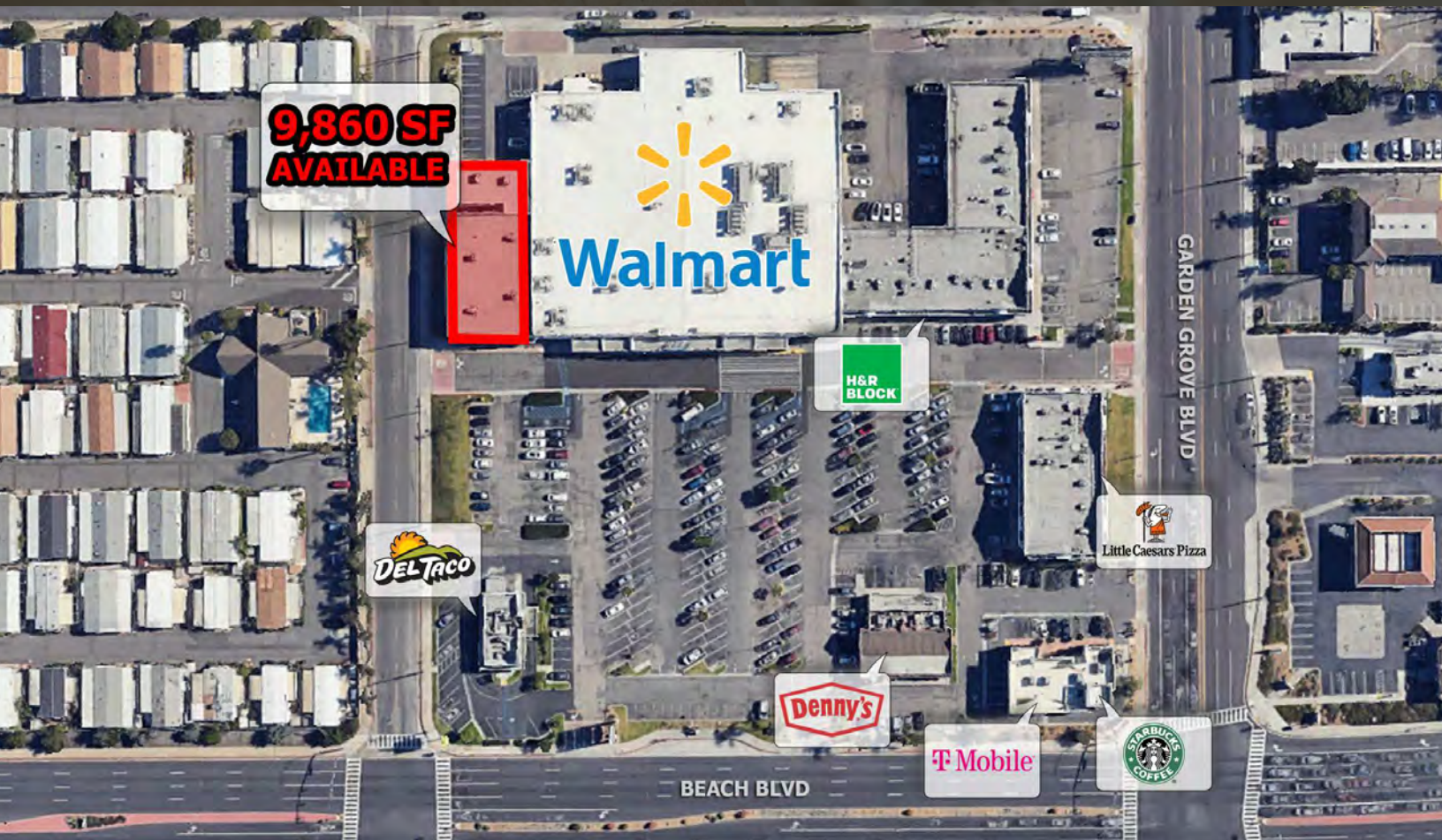


FOR LEASE

PLAZA ON THE BOULEVARD

12820-12950 BEACH BOULEVARD STANTON, CA 90680

CORELAND
COMPANIES



9,860 SF (Divisible to 6,000 SF) & 1,000 SF Retail Spaces For Lease

PROPERTY DESCRIPTION

9,860 SF (Divisible to 6,000 SF) and 1,000 SF Retail Spaces Available

PROPERTY HIGHLIGHTS

- Features the area's only Walmart Neighborhood Market
- 110,475 vehicles per day at NEC Beach Blvd. and Garden Grove Blvd
- Directly across from new development 22 & Beach featuring In-N-Out, Cane's and Planet Fitness
- Additional area retailers Include CVS Pharmacy, Home Depot, Sam's Club, Walgreens & Walmart

SPACES

SPACE SIZE

Unit 12820

9,860 SF

Unit 12860 G

1,000 SF

DEMOGRAPHICS

1 MILE

3 MILES

5 MILES

Total Households

9,562

76,911

197,868

Total Population

32,105

260,511

644,496

Average HH Income

\$90,078

\$114,467

\$119,177

TIM MULLER

MATT HAMMOND

714.210.6724

tmuller@coreland.com
LIC #01786175

714.210.6711

mhammond@coreland.com
LIC #01235239

The information contained herein has been obtained from sources we deem reliable, however no warranty or representation is made to the accuracy of the information. Terms of lease or availability are subject to change or withdrawal without notice.

FOR LEASE

PLAZA ON THE BOULEVARD

12820-12950 BEACH BOULEVARD STANTON, CA 90680



FOR LEASE

PLAZA ON THE BOULEVARD

12820-12950 BEACH BOULEVARD STANTON, CA 90680



CORELAND
COMPANIES

TIM MULLER

714.210.6724
tmuller@coreland.com
LIC #01786175

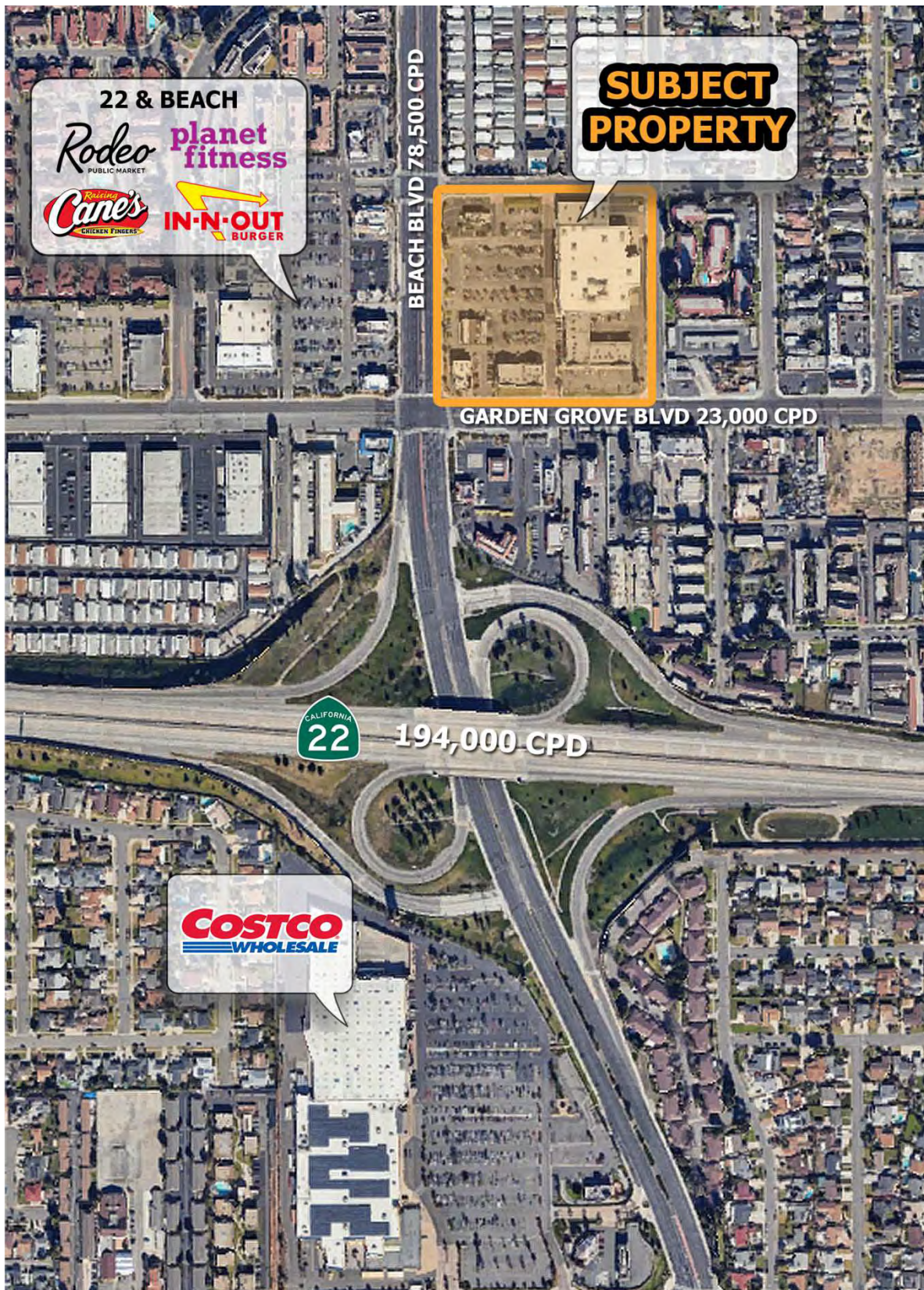
MATT HAMMOND

714.210.6711
mhammond@coreland.com
LIC #01235239

FOR LEASE

PLAZA ON THE BOULEVARD

12820-12950 BEACH BOULEVARD STANTON, CA 90680



CORELAND
COMPANIES

TIM MULLER

714.210.6724
tmuller@coreland.com
LIC #01786175

MATT HAMMOND

714.210.6711
mhammond@coreland.com
LIC #01235239