

AVAILABLE

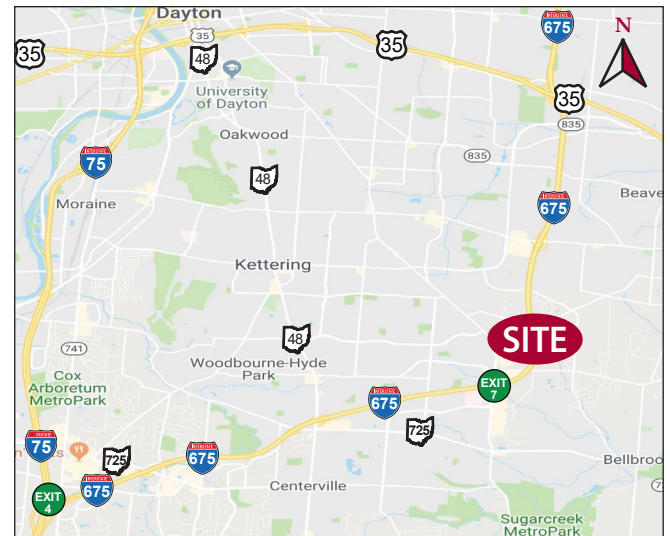


CORNERSTONE OF CENTERVILLE SOUTH

I-675 & Wilmington Pike
Centerville, OH 45440



- **PREMIER 72-ACRE MIXED USE DEVELOPMENT** accommodating restaurant, destination retail, entertainment, hotel and office users
- **CLOSE PROXIMITY TO CORNERSTONE NORTH**, the 156-acre premier regional mixed-use destination anchored by Costco, Kroger and Cabela's
- **STRATEGICALLY LOCATED** in southeast Dayton on I-675 at Wilmington Pike amid Dayton's most desirable demographics including Centerville/Washington Twp., Kettering, Oakwood, Beaver Creek, Bellbrook and Sugar Creek Township
- **SITE OFFERS EXCELLENT I-675 VISIBILITY** providing drive-by traffic of over 61,500 cars per day
- **BUILD-TO-SUIT OPPORTUNITIES**
- **IDEALLY SITUATED AT I-675 FULL INTERCHANGE AND ACROSS FROM BOTH:** Miami Valley Hospital South, a 750,000 SF hospital & medical office complex with over 450 employees; and Sinclair College South Campus, a 39-acre education, cultural & community center providing access to college & university classes, recreation, health services, cultural & performing arts activities



CHRIS CONLEY
937.531.5514
cconley@oberer.com

DANIELLE KUEHNLE
937.531.5528
dkuehnle@oberer.com

2021 DEMOGRAPHICS	5 mile	7 mile	10 mile
POPULATION	133,927	252,658	448,741
HH INCOME	\$99,997	\$95,046	\$86,347
TOTAL EMPLOYEES	72,727	136,373	263,126

WELCOME TO THE REGION WE KNOW

OBERER REALTY SERVICES, LTD. • 937-910-0851 • 3445 Newmark Drive, Miamisburg, Ohio 45342 • www.obererrealty.com

CORNERSTONE OF CENTERVILLE SOUTH

I- 675 & Wilmington Pike
Centerville, OH 45440



SITE PLAN



CORNERSTONE OF CENTERVILLE, SOUTH
INTERSTATE 675 & WILMINGTON PIKE
 CITY OF CENTERVILLE, COUNTY OF GREENE, STATE OF OHIO

****THIS CONCEPT PLAN WAS COMPLETED WITHOUT AN ALTA SURVEY.****
 THE INFORMATION SHOWN ON THIS CONCEPT PLAN IS TO ILLUSTRATE GENERAL INTENT AND SHALL NOT BE CONSTRUED AS FINAL WITH REGARD TO ANY AND ALL IMPROVEMENTS SHOWN HEREON.
 MAY 2021

SITE CONCEPT
 SCALE: NONE
 The information shown on this concept plan is to illustrate general intent and shall not be construed as final with regard to any and all improvements shown hereon.



WELCOME TO THE REGION WE KNOW

OBERER REALTY SERVICES, LTD. • 937-910-0851 • 3445 Newmark Drive, Miamisburg, Ohio 45342 • www.obererrealty.com

CORNERSTONE OF CENTERVILLE

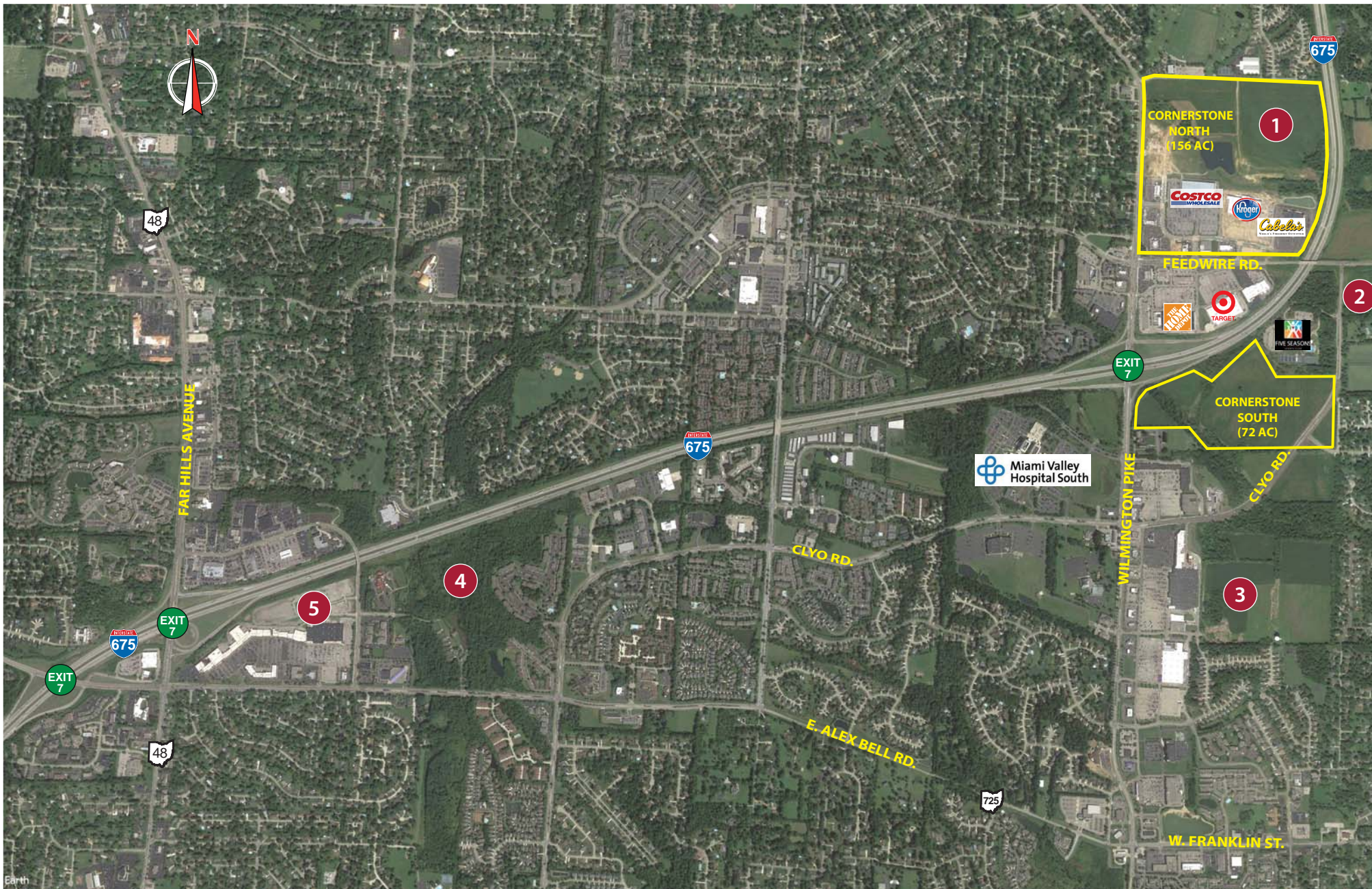
Wilmington Pike & Feedwire Rd.
Centerville, OH 45440



WELCOME TO THE REGION WE KNOW

OBERER REALTY SERVICES, LTD. • 937-910-0851 • 3445 Newmark Drive, Miamisburg, Ohio 45342 • www.obererrealty.com

NEW MULTIFAMILY RESIDENTIAL DEVELOPMENTS



1 Cornerstone of Centerville: 300 units

3 White Oaks Landing: 203 units

5 The Allure: 312 units

2 Waterford at Sugarcreek: 231 units

4 Gateway Lofts: 396 units