

# Anacortes Professional Center

---

ANACORTES DOWNTOWN

**Nate Scott**

(360)708-2354 / [NScott@windermere.com](mailto:NScott@windermere.com)



Windermere Real Estate / North Sound

# Anacortes Professional Center

**LEASED**

**331**  
GROUND FLOOR, OFFICE SUITE  
915 SQUARE FEET  
9.77% NNN OF NORTH BUILDING

DIRECT ACCESS TO COMMERCIAL AVENUE  
TWO PRIVATE OFFICES  
OPEN WORK AREA

KITCHENETTE  
ONE RESTROOM  
STORAGE CLOSET

**LEASED**

**335**  
GROUND FLOOR, OFFICE SUITE  
3,400 SQUARE FEET  
36.33% NNN OF NORTH BUILDING

DIRECT ACCESS TO COMMERCIAL AVENUE  
THREE PRIVATE OFFICES  
OPEN WORK AREA

KITCHENETTE  
TWO MULTI-USER RESTROOMS  
STORAGE CLOSET

**317**  
**AMENITIES:**  
GROUND FLOOR ACCESS FROM  
COMMERCIAL AVENUE  
SHIPPING/RECEIVING AREA  
ELEVATOR  
ARCHITECTURAL ELEMENTS  
FIBER INTERNET ACCESS  
SHARED CONFERENCE ROOM  
SHARED KITCHENETTE  
RESTROOMS ALL FLOORS

**SUITE 102**  
5,060 SQ. FT. GROUND FLOOR  
25.50% NNN OF SOUTH BUILDING  
LARGE OPEN WORK AREA  
PRIVATE RESTROOMS  
CONFERENCE ROOM

**SUITE 202**  
**LEASED**  
14,750 SQ. FT. SECOND FLOOR  
0.7% NNN OF SOUTH BUILDING  
(GROSS LEASE)  
SINGLE OFFICE

**SUITE 100**  
**LEASED**  
1,592 SQ. FT. GROUND FLOOR  
8.02% NNN OF SOUTH BUILDING  
THREE OFFICES, OPEN WORK AREA,  
DRINKING FOUNTAIN, KITCHENETTE

**SUITE 101**  
**LEASED**  
220 SQ. FT. GROUND FLOOR  
1.11% NNN OF SOUTH BUILDING  
(GROSS LEASE)  
SINGLE OFFICE

**SUITE 203**  
1,871 SQ. FT. SECOND FLOOR  
9.43% NNN OF SOUTH BUILDING  
TWO PRIVATE OFFICES, LARGE WORK AREA,  
KITCHENETTE, PRIVATE CONFERENCE ROOM

**SUITE 200**  
**LEASED**  
4,150 SQ. FT. SECOND FLOOR  
2.2% NNN OF SOUTH BUILDING  
(GROSS LEASE)  
TWO OFFICE SUITE

**SUITE 204**  
**LEASED**  
1,115 SQ. FT. SECOND FLOOR  
0.58% NNN OF SOUTH BUILDING  
(GROSS LEASE)  
SINGLE OFFICE

**SUITE 101**  
168 SQ. FT. GROUND FLOOR  
0.85% NNN OF SOUTH BUILDING  
(GROSS LEASE)  
SINGLE OFFICE

**SUITE 201**  
**LEASED**  
1,713 SQ. FT. SECOND FLOOR  
53.9% NNN OF SOUTH BUILDING  
10% NNN OF NORTH BUILDING  
(GROSS LEASE)  
SEPARATE PUBLIC AND EMPLOYEE ENTRANCES  
MULTIPLE OFFICES, CONFERENCE ROOM,  
RESTROOMS, DRINKING FOUNTAIN, AND LARGE  
EMPLOYEE BREAK AREA. VIEWS TO CHANNEL

**SUITE 205**  
**LEASED**  
5,070 SQ. FT. SECOND FLOOR  
28.76% NNN OF SOUTH BUILDING  
MULTIPLE OFFICES, PRIVATE MULTI-USER  
RESTROOMS, CONFERENCE ROOMS, LARGE  
OPEN WORK AREAS, KITCHENETTE, BREAK  
ROOM AREA. OPTION TO SUBDIVIDE INTO  
MULTIPLE SUITES.

# Anacortes Professional Center

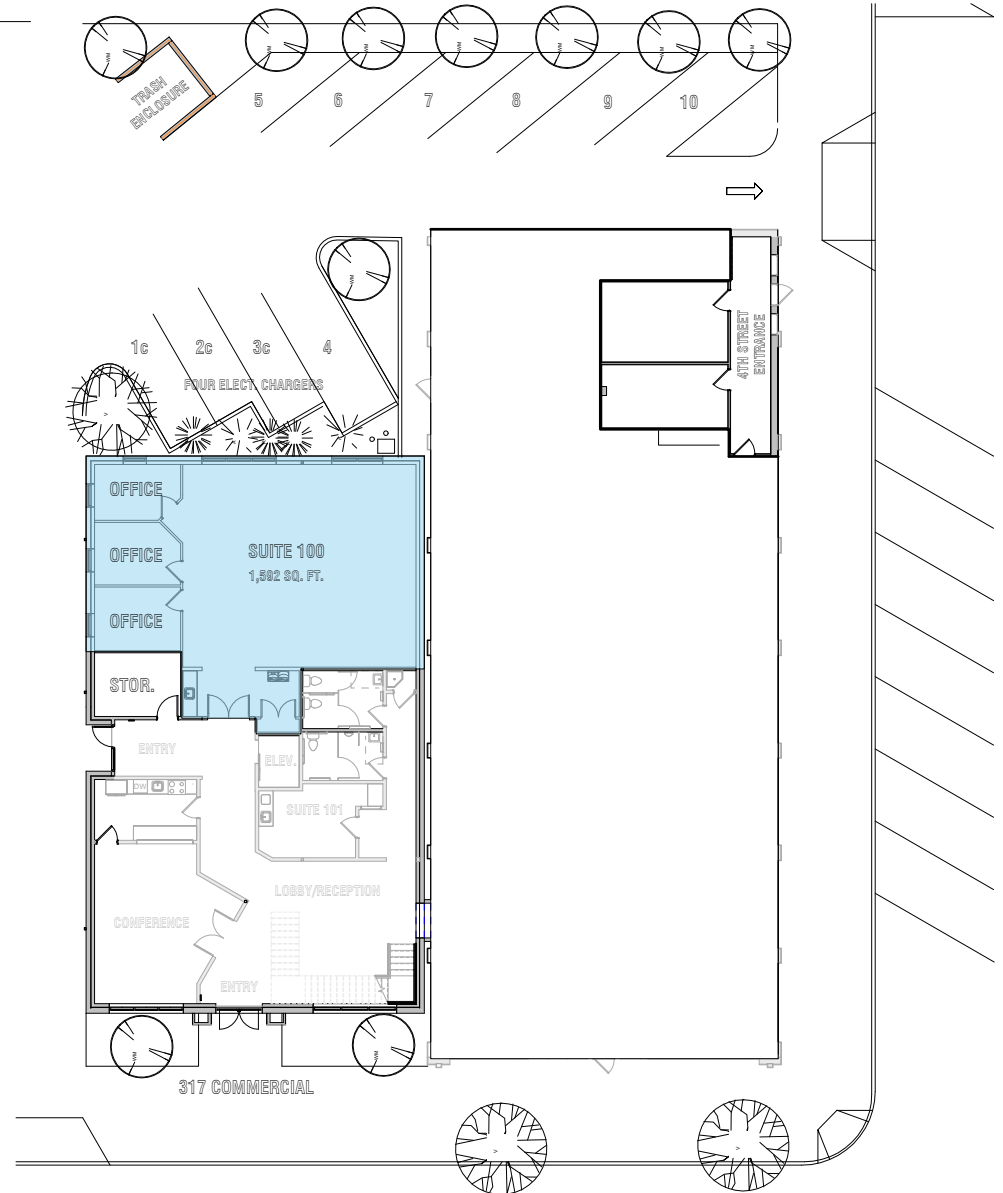
317 Commercial Avenue

SUITE 100  
1,592 SQUARE FEET  
8.02% OF SOUTH BUILDING

**LEASED**



317 COMMERCIAL



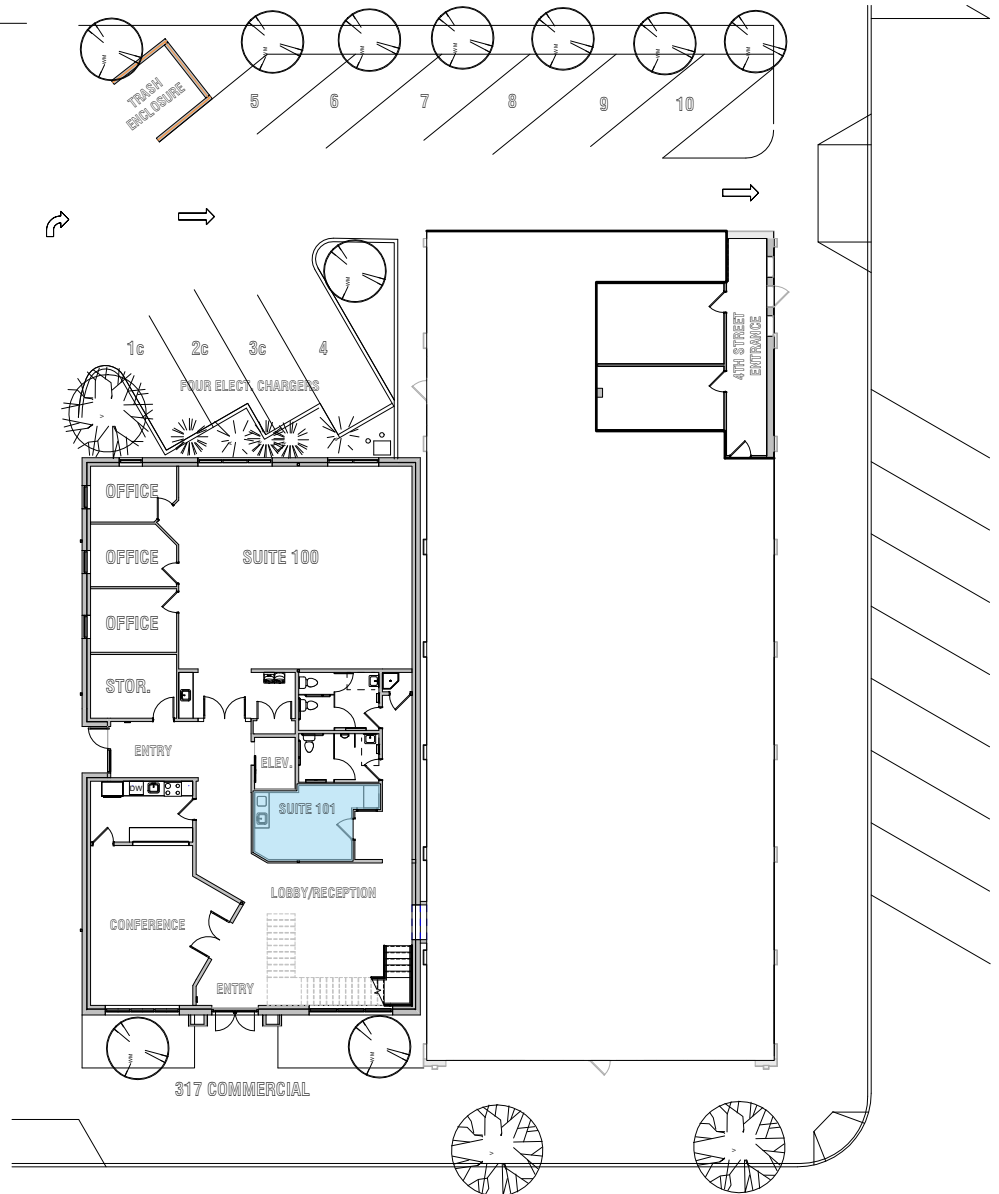
# Anacortes Professional Center

317 Commercial Avenue

SUITE 101  
168 SQUARE FEET  
0.85% NNN OF SOUTH BUILDING  
(GROSS LEASE)



317 COMMERCIAL



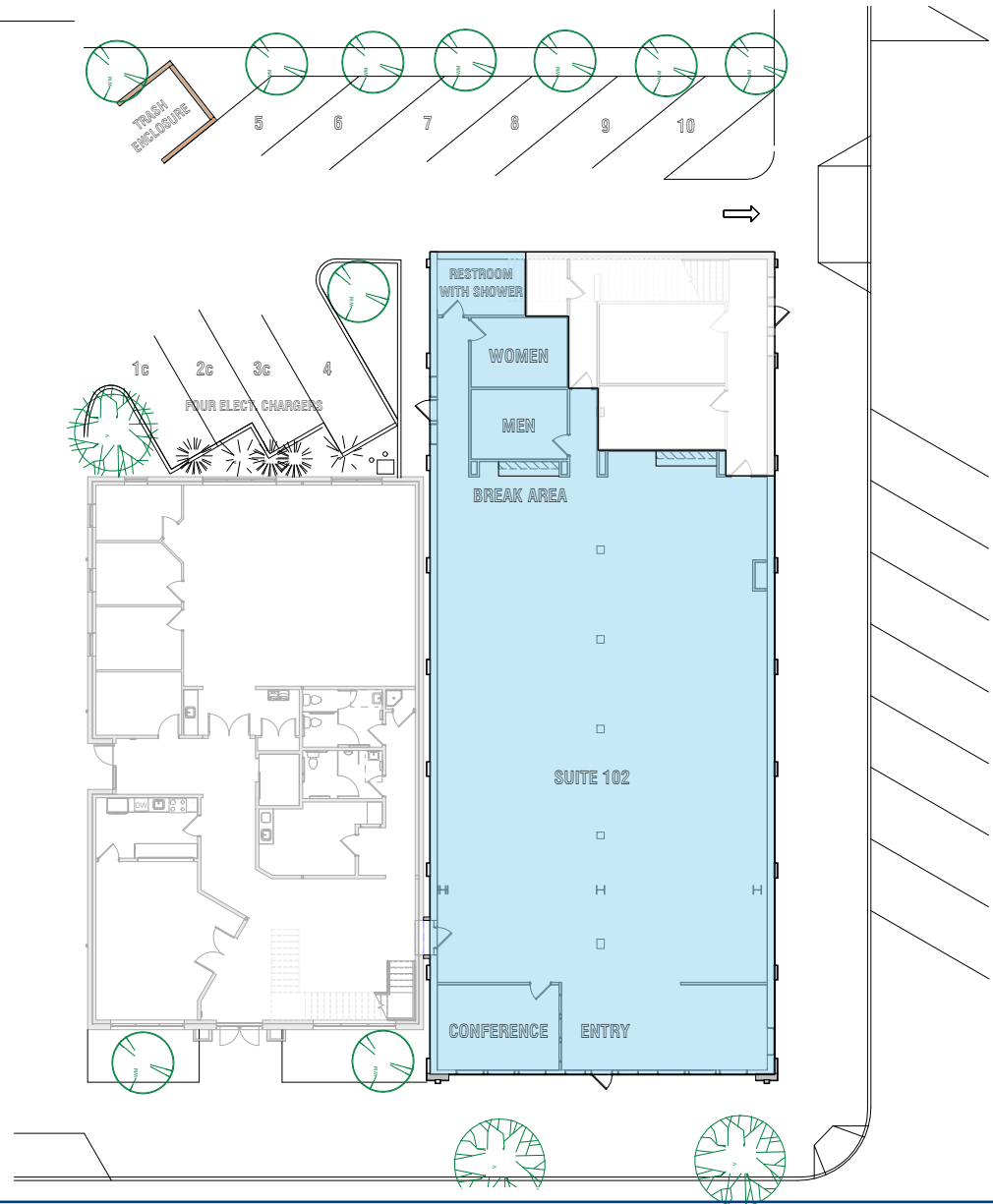
# Anacortes Professional Center

317 Commercial Avenue

SUITE 102  
5,060 SQUARE FEET  
25.50% NNN



317 COMMERCIAL



# Anacortes Professional Center

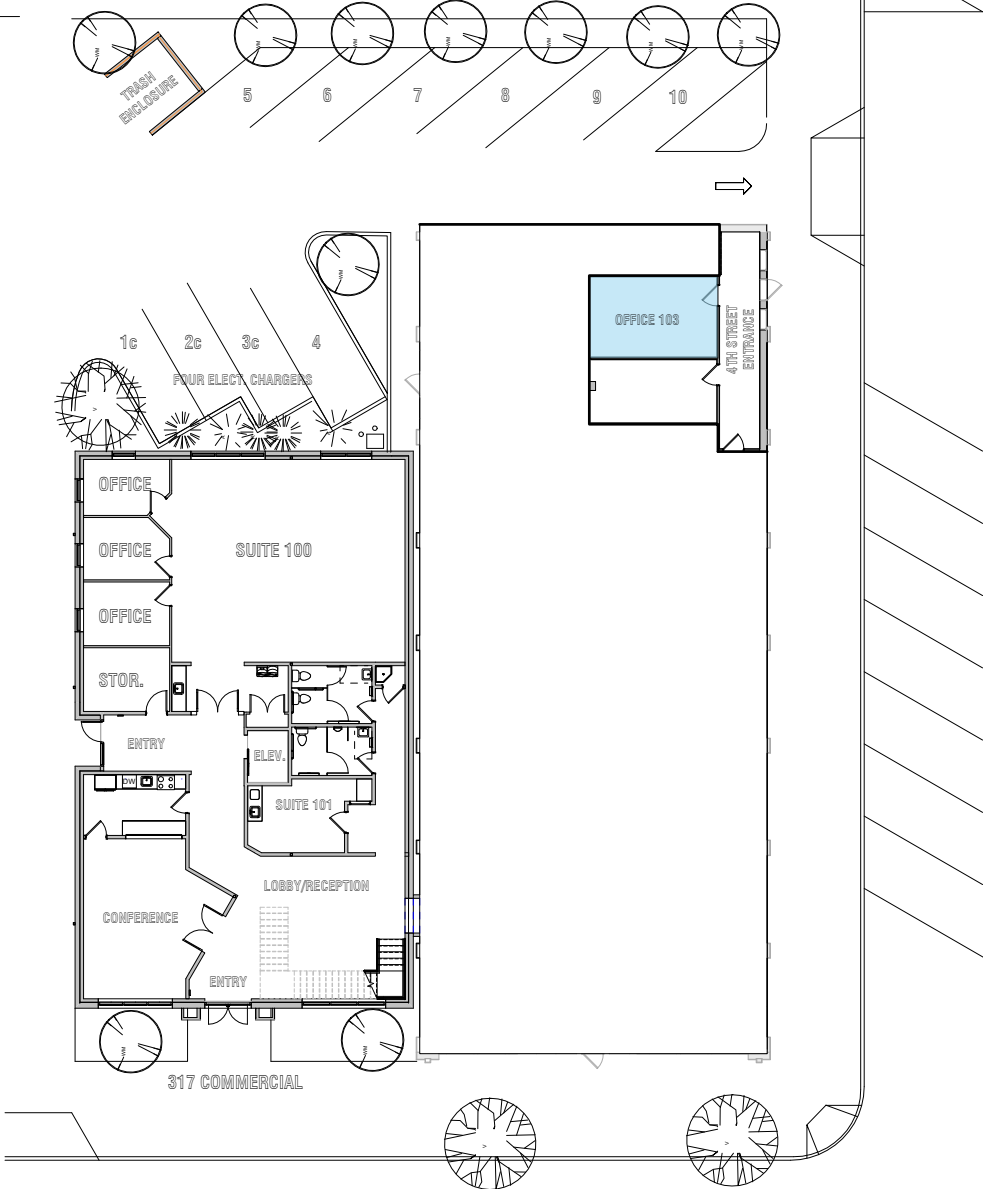
317 Commercial Avenue

SUITE 103  
220 SQUARE FEET  
1.11% SHOWN OF SOUTH BUILDING  
(GROSS LEASE)

**LEASED**



317 COMMERCIAL



# Anacortes Professional Center

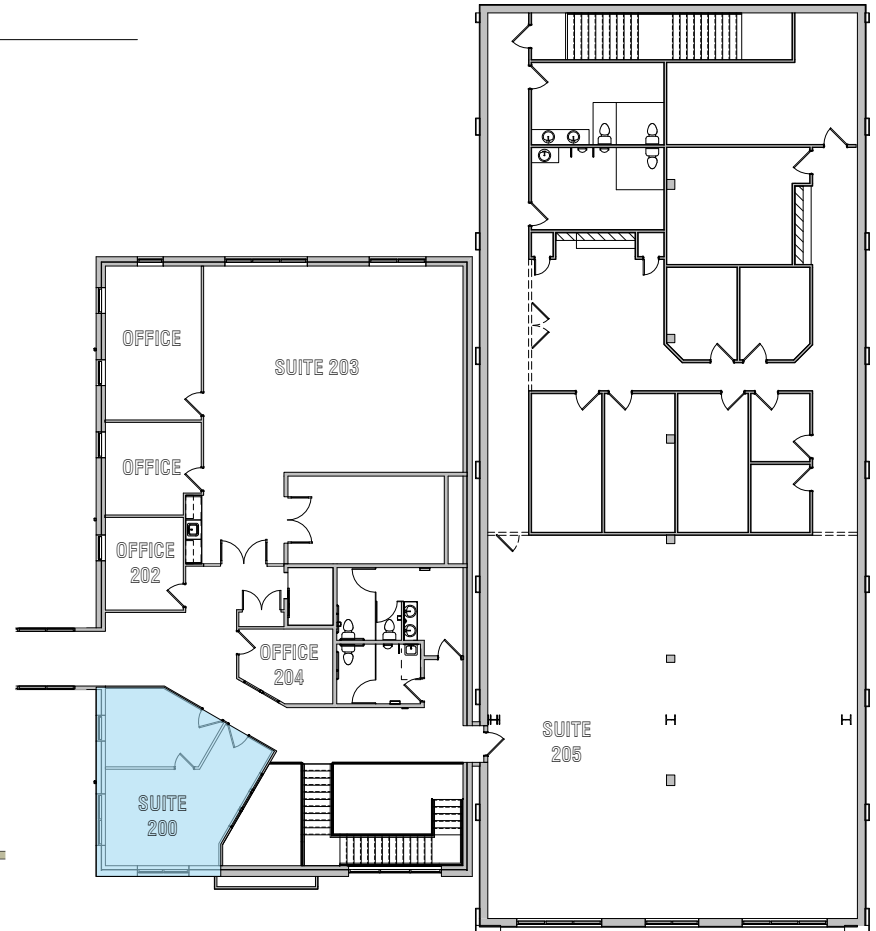
317 Commercial Avenue

SUITE 200  
435 SQUARE FEET  
2 1/2' MIN OF SOUTH BUILDING  
(GROSS LEASE)

**LEASED**



317 COMMERCIAL



# Anacortes Professional Center

317 Commercial Avenue

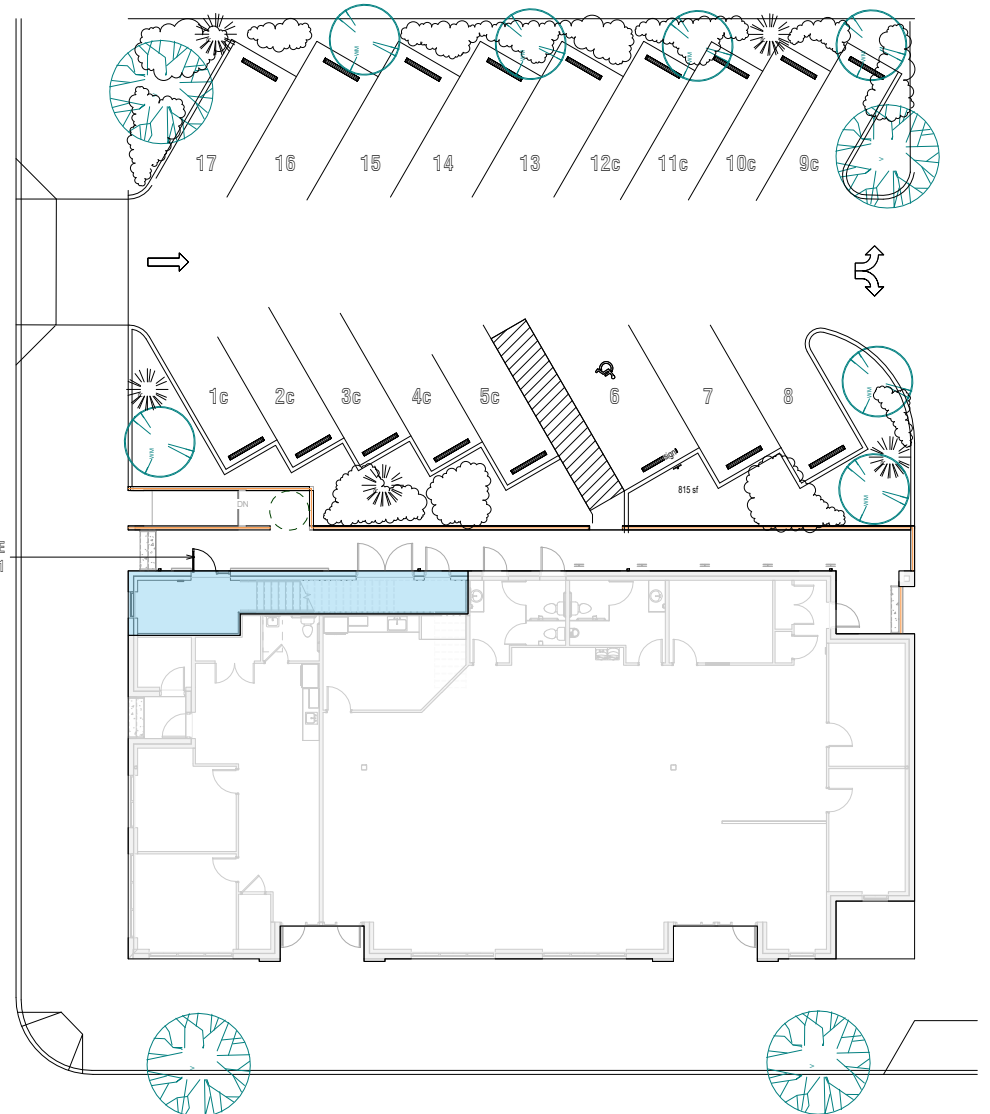
SUITE 201  
5,048 SQUARE FEET  
FIRST FLOOR: 280 SQUARE FEET  
SECOND FLOOR: 4,768 SQUARE FEET  
55.9% NNN OF NORTH BUILDING  
10% NNN OF SOUTH BUILDING

**LEASED**



317 COMMERCIAL

3RD STREET ENTRANCE  
TO SUITE 201





# Anacortes Professional Center

317 Commercial Avenue

SUITE 201

5,048 SQUARE FEET

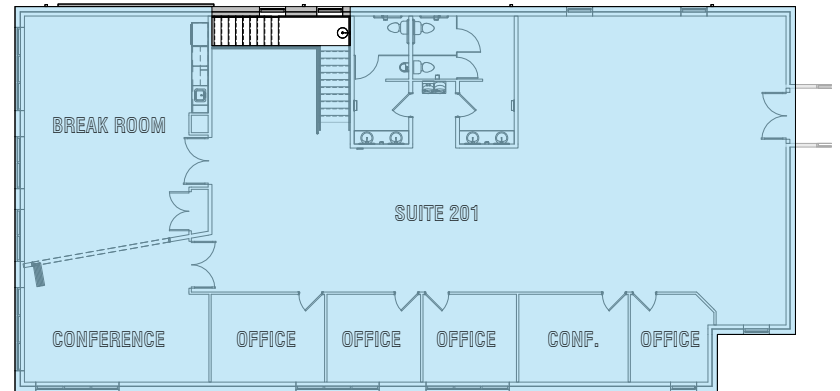
FIRST FLOOR: 280 SQUARE FEET

SECOND FLOOR: 4,768 SQUARE FEET

53.9% NNN OF NORTH BUILDING

10% OF SOUTH BUILDING

**LEASED**



317 COMMERCIAL

# Anacortes Professional Center

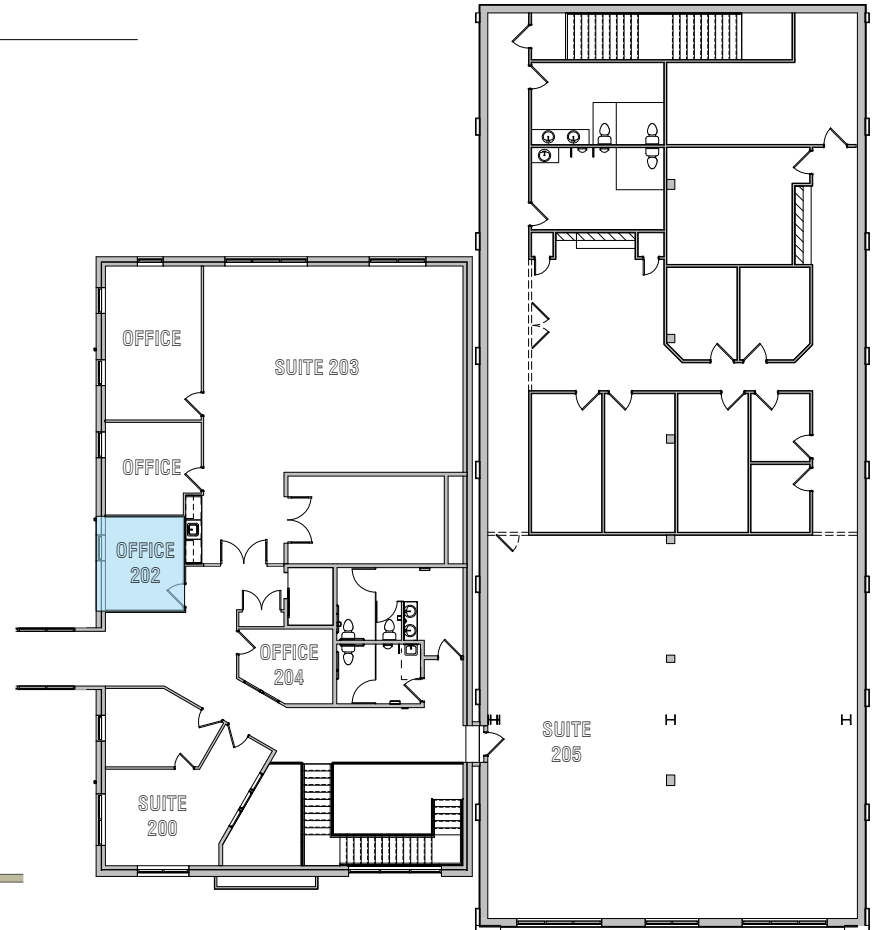
317 Commercial Avenue

SUITE 202  
140 SQUARE FEET  
9.7% (INCL. OF SOUTH BUILDING  
(GROSS LEASE)

**LEASED**



317 COMMERCIAL



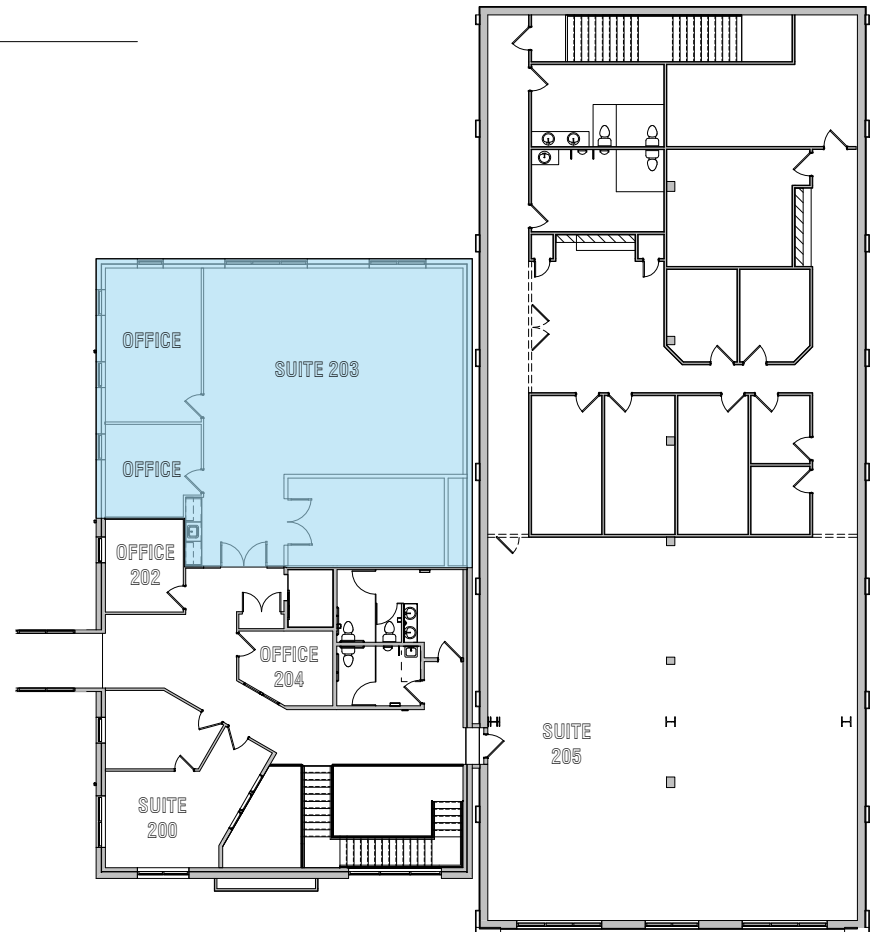
# Anacortes Professional Center

317 Commercial Avenue

SUITE 203  
1,871 SQUARE FEET  
9.43% NNN OF SOUTH BUILDING



317 COMMERCIAL



# Anacortes Professional Center

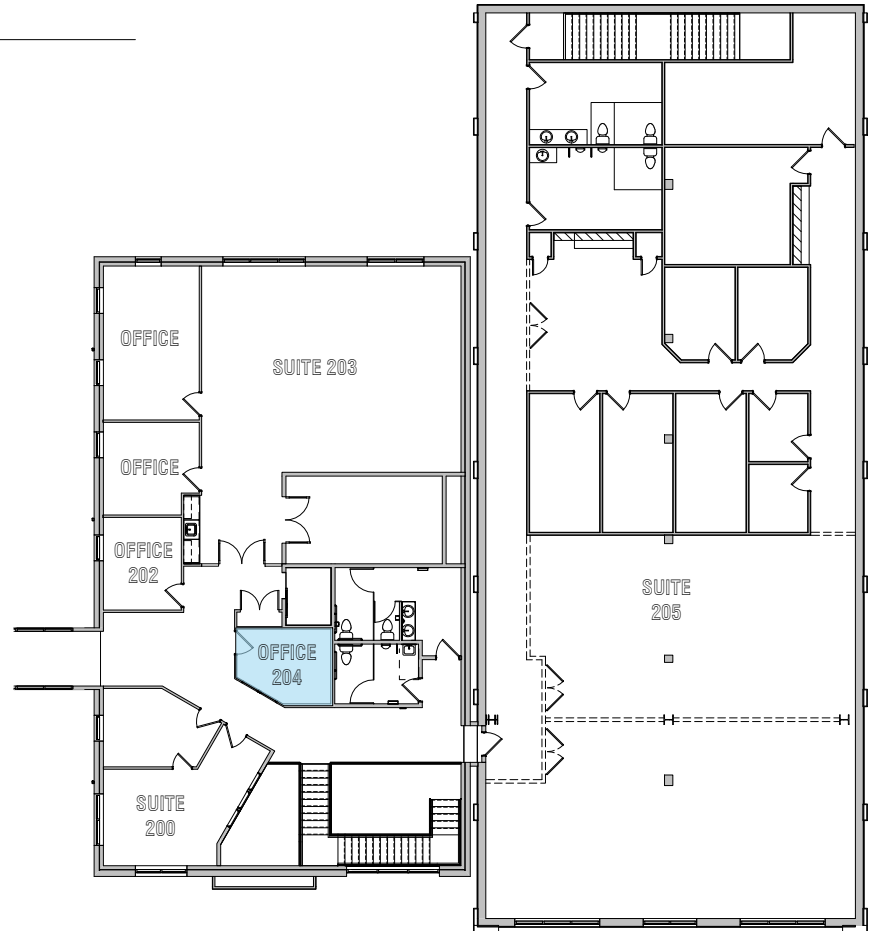
317 Commercial Avenue

SUITE 204  
115 SQUARE FEET  
0.38% IN IN OF SOUTH BUILDING  
(GROSS LEASE)

**LEASED**



317 COMMERCIAL



# Anacortes Professional Center

317 Commercial Avenue

SUITE 205

5,707 SQUARE FEET

28.76% N.W. 1/4 OF SOUTH BUILDING

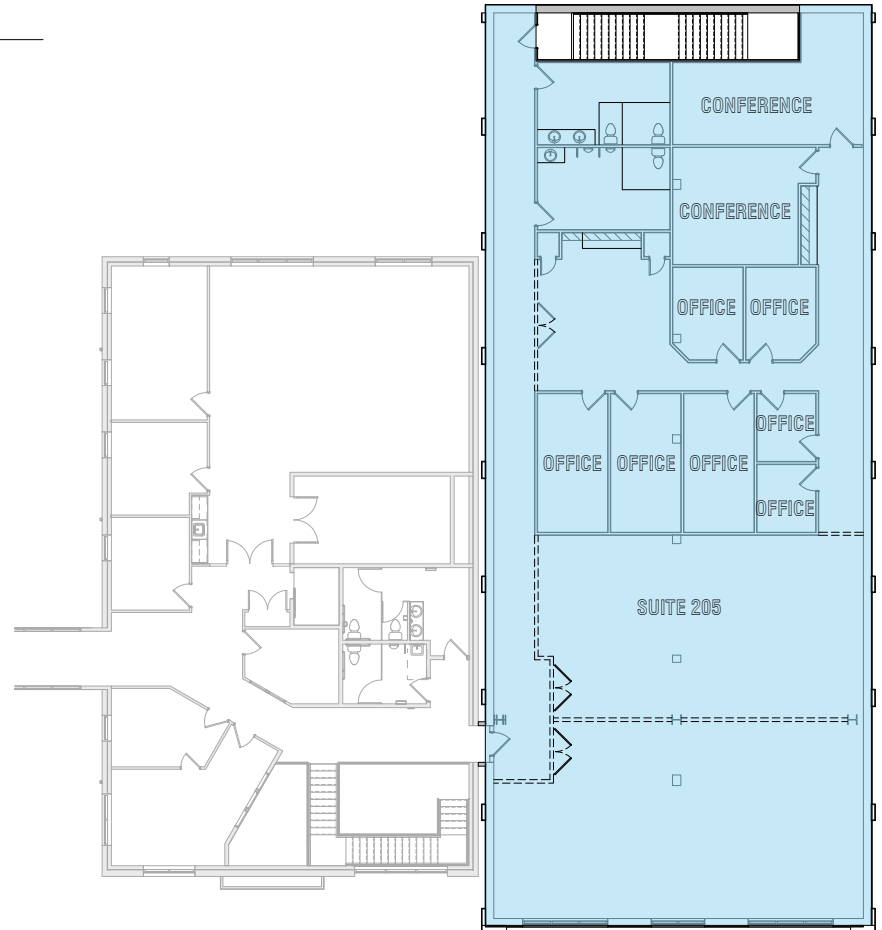
NO F.

SPACE COULD BE SUBDIVIDED INTO  
MULTIPLE SUITES

**LEASED**



317 COMMERCIAL



317 COMMERCIAL

# Anacortes Professional Center

317 Commercial Avenue

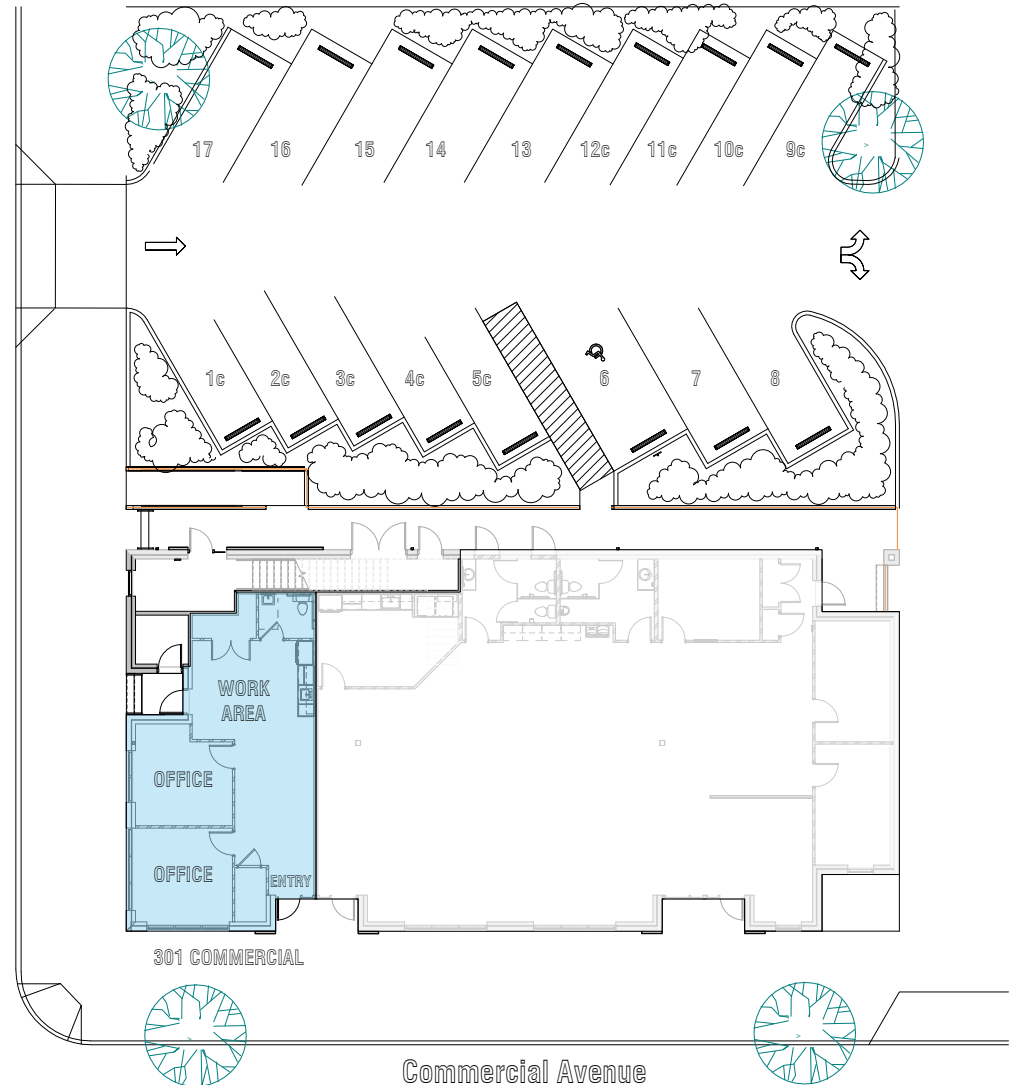
915 SQUARE FEET

9.77% NN OF NORTH BUILDING

**LEASED**



301 COMMERCIAL



301 COMMERCIAL

Commercial Avenue

# Anacortes Professional Center

317 Commercial Avenue

3,400 SQUARE FEET  
36.28% NORTH OF NORTH BUILDING

**LEASED**



305 COMMERCIAL

