

266 W 135 STREET



BETWEEN FREDERICK DOUGLAS & ADAM CLAYTON POWELL BOULEVARDS



FOR MORE INFORMATION, PLEASE CONTACT:

KENNETH SALZMAN, SIOR

212.776.1227

ksalzman@lee-associates.com

SETH ROSEN

212.776.1278

srosen@lee-associates.com

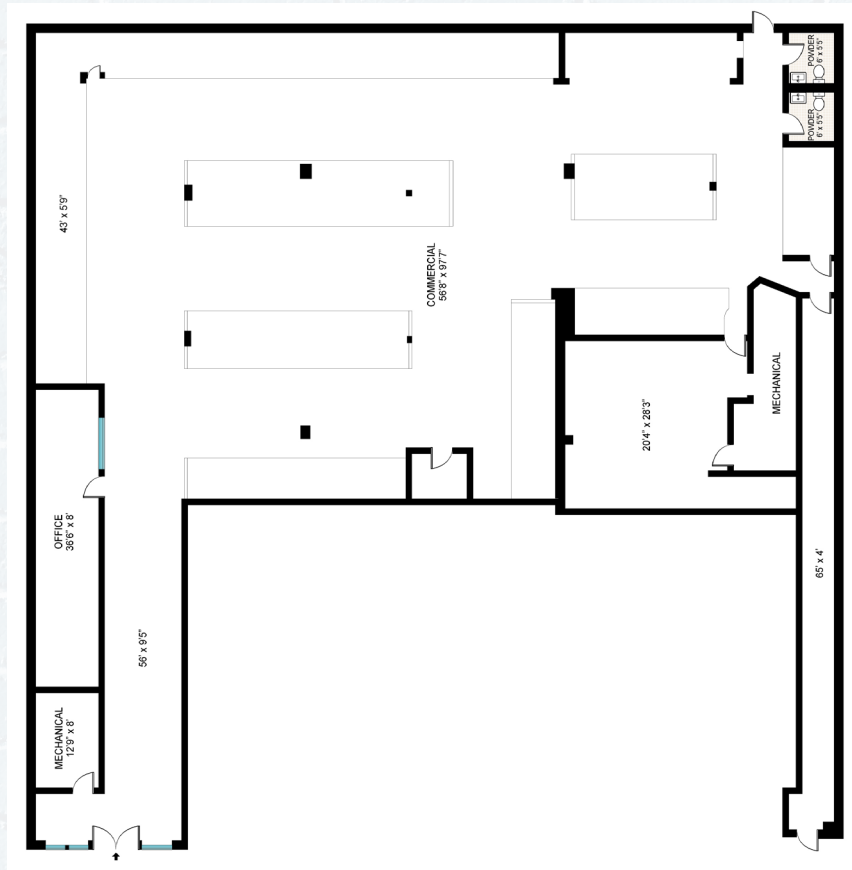
CORY GAHR

212.776.1271

cgahr@lee-associates.com

266 W/135 STREET

BETWEEN FREDERICK DOUGLAS & ADAM CLAYTON POWELL BOULEVARDS



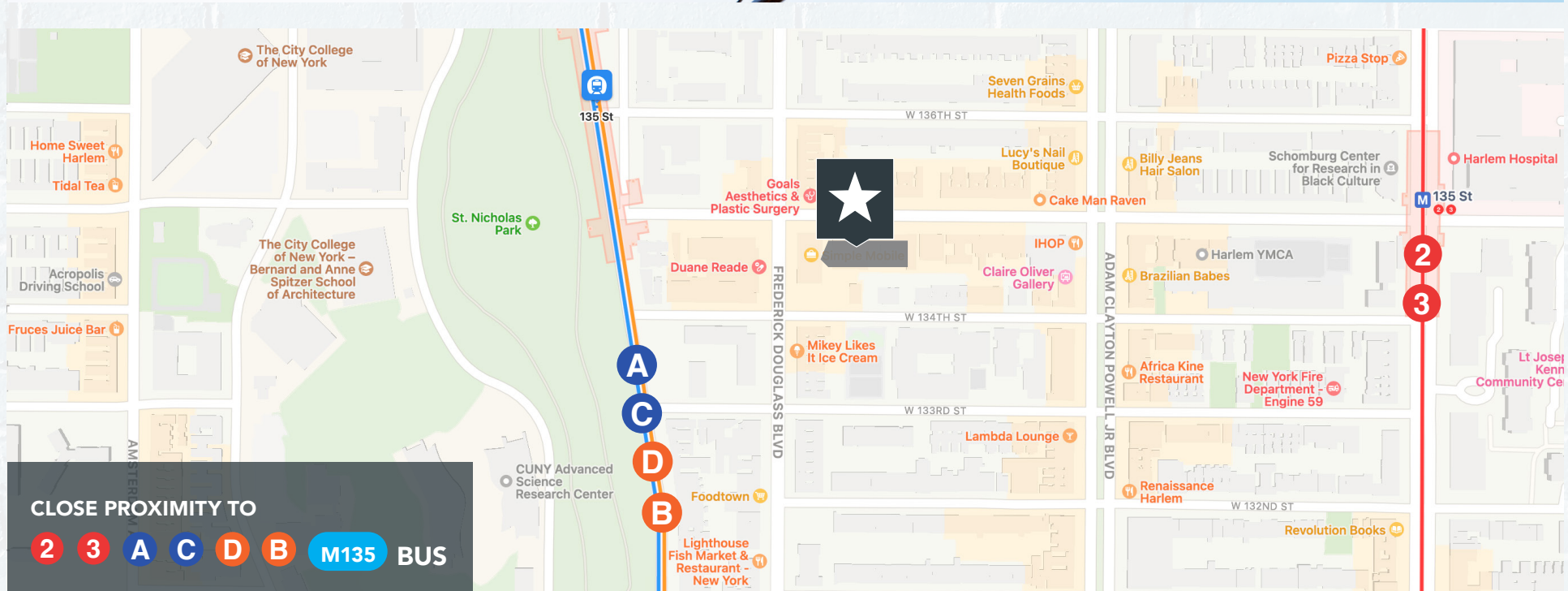
135TH STREET

HIGHLIGHTS

- Approximately 6,500 SF of available retail (up to 10,000 sf in total can be made available)
- Vacant, former laundromat with existing water and power infrastructure
- Up to 100 feet of frontage
- Incredible signage and branding opportunity
- Available for long-term net lease, up to 65,000+ SF Community Facility

266 W 135 STREET

WEST HARLEM



FOR MORE INFORMATION, PLEASE CONTACT:

KENNETH SALZMAN, SIOR

212.776.1227

ksalzman@lee-associates.com

SETH ROSEN

212.776.1278

srosen@lee-associates.com

CORY GAHR

212.776.1271

cgahr@lee-associates.com