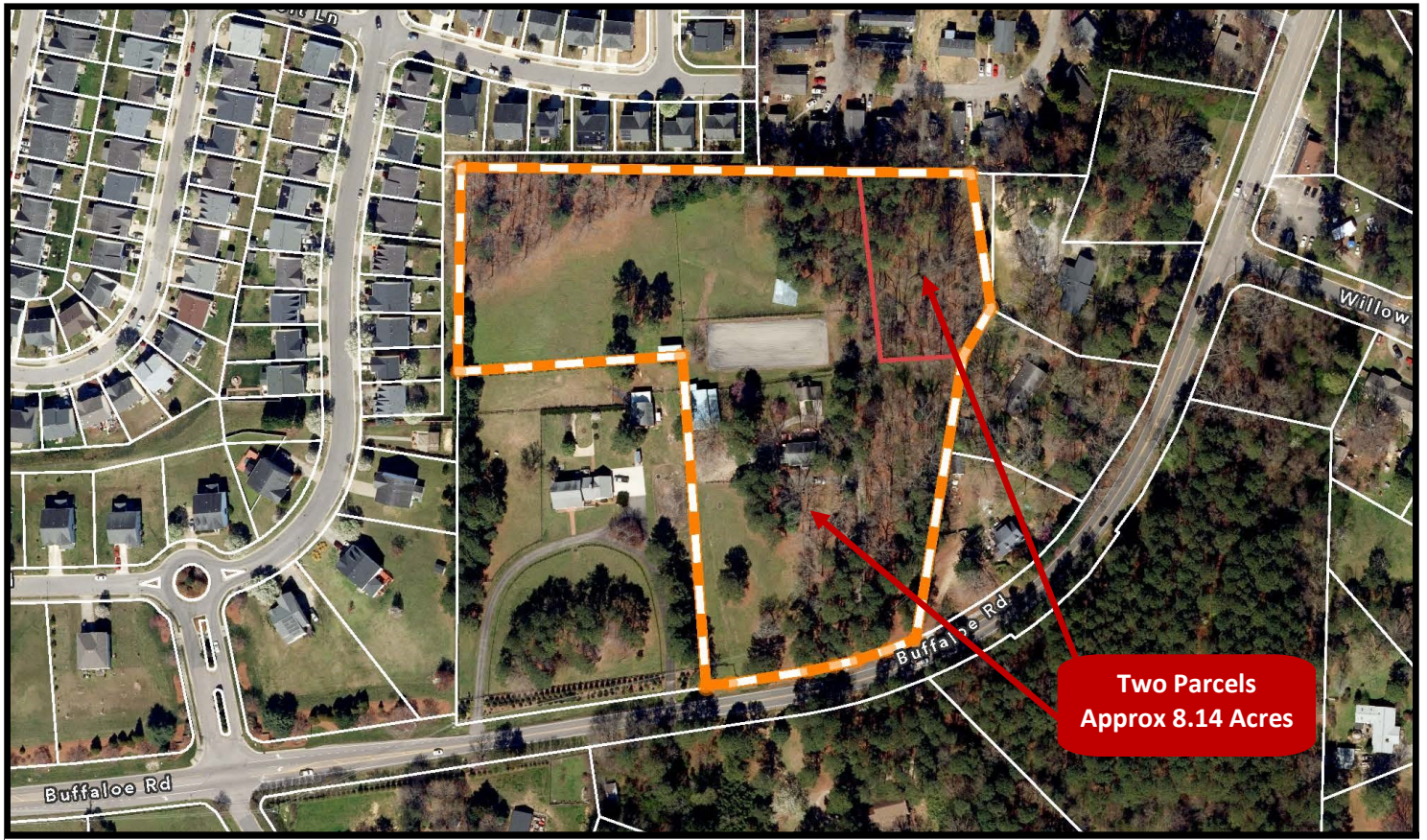


Exhibit A

Property Description



Approximately 8.14 Acres, with improvements, consisting of two lots with Lot #2 being approximately 7.19 acres with PIN #1735494487 and REID #0035237 with legal description of "LO2 PROP JOHNSON & JOHNSON BM2000-264" and additional Lot being approximately .95 Acres with PIN #1735496692 and REID #0325217 with legal description of "DIVISION PROPERTY DAN CRITCHER".