

Office / Service Retail Space for Lease

AVAILABLE: 3,794 – 9,397 RSF | CAPITOL HILL LOCATION

115 15TH AVE E, SEATTLE, WA 98112



Property Highlights

LEASE RATE: \$20.00 PSF NNN | EST. NNN: \$11.87 PSF

Located in highly desirable Capitol Hill neighborhood

Signage opportunities

Private interior elevator in building

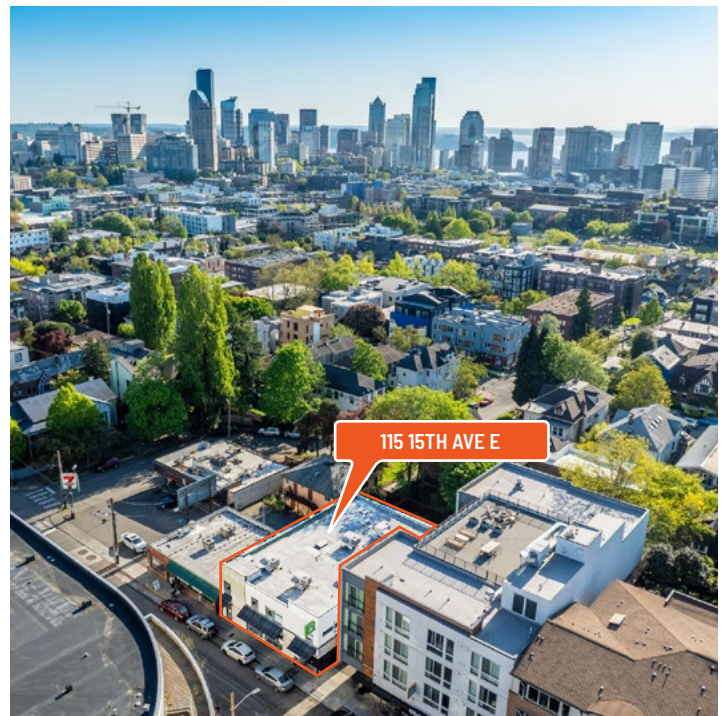
±6 free surface onsite parking spaces

Easy access to I-5 and Downtown Seattle

Perfect for service-oriented business seeking high visibility

Walk Score® 97 | Transit Score® 78 | Bike Score® 89

[This property is also available for sale \[Click for Info\]](#)



FOR MORE INFO
CONTACT

BOJIDAR GABROVSKI
JACK DEANE
JACK FRANZ

bgabrovski@orioncp.com
jdeane@orioncp.com
jfranz@orioncp.com

847.275.8474
206.707.1315
925.482.7232

1218 Third Ave, Suite 2200
Seattle, WA 98101
www.orioncp.com

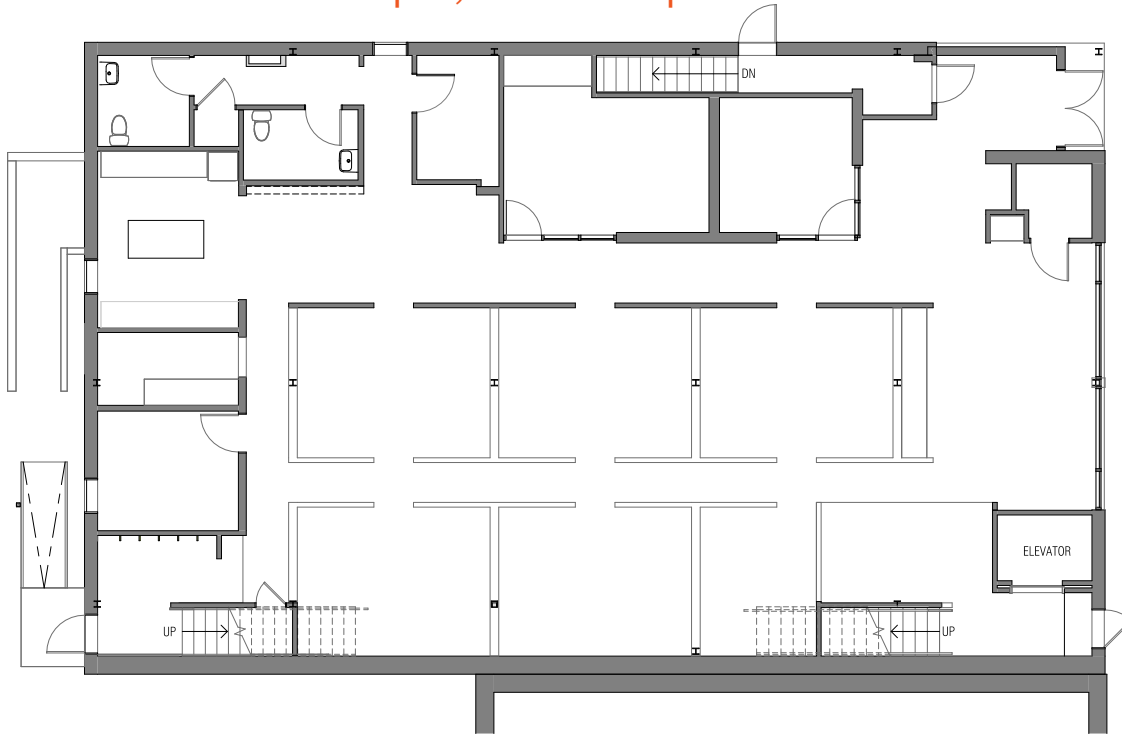
ORION
COMMERCIAL PARTNERS

Office / Service Retail Space for Lease

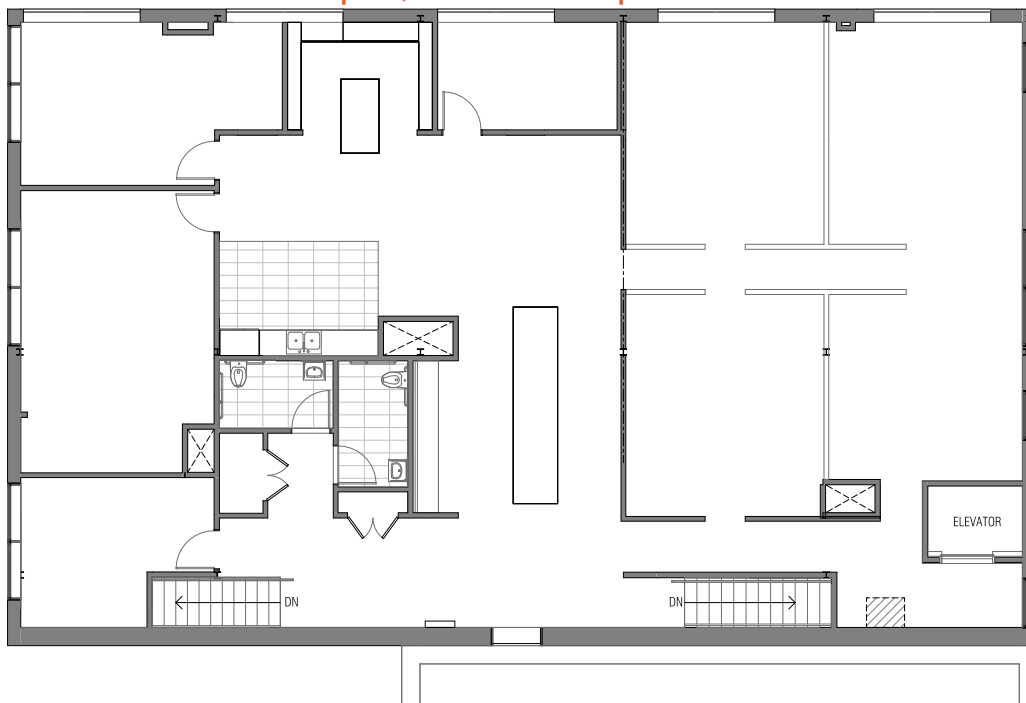
FIRST & SECOND FLOOR | 3,794 – 9,397 RSF FULL BUILDING

115 15TH AVE E, SEATTLE, WA 98112

First Floor | 3,794 RSF | Renovated 2016



Second Floor | 3,888 RSF | Renovated 2020



FOR MORE INFO
CONTACT

BOJIDAR GABROVSKI
JACK DEANE
JACK FRANZ

bgabrovski@orioncp.com
jdeane@orioncp.com
jfranz@orioncp.com

847.275.8474
206.707.1315
925.482.7232

1218 Third Ave, Suite 2200
Seattle, WA 98101
www.orioncp.com

ORION
COMMERCIAL PARTNERS

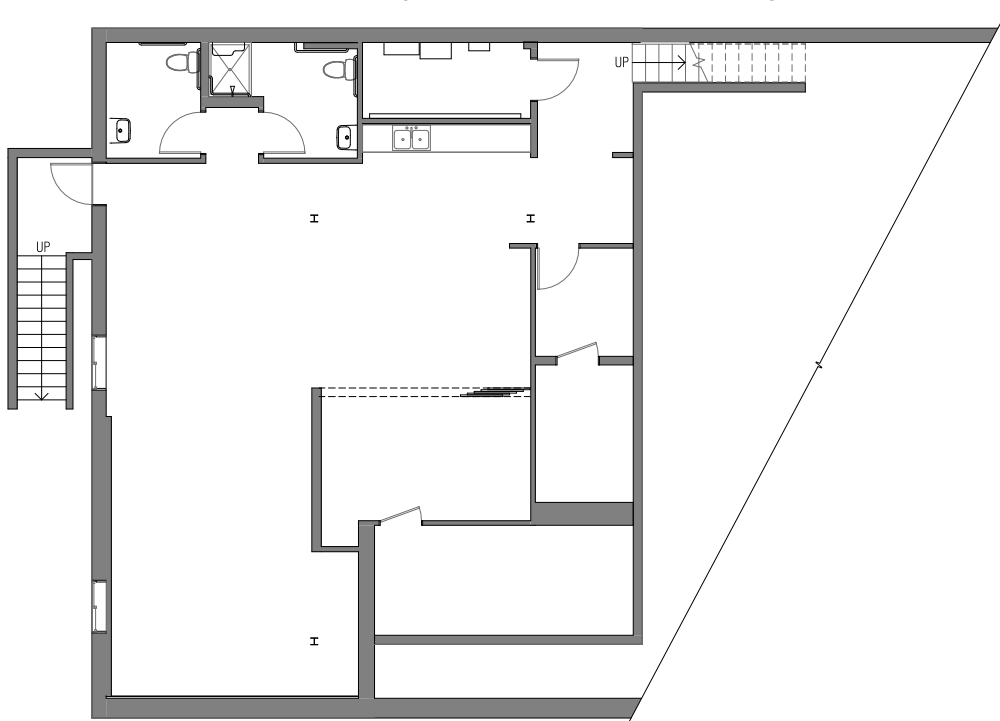
Office / Service Retail Space for Lease

AVAILABLE: 3,794 – 9,397 RSF | CAPITOL HILL LOCATION

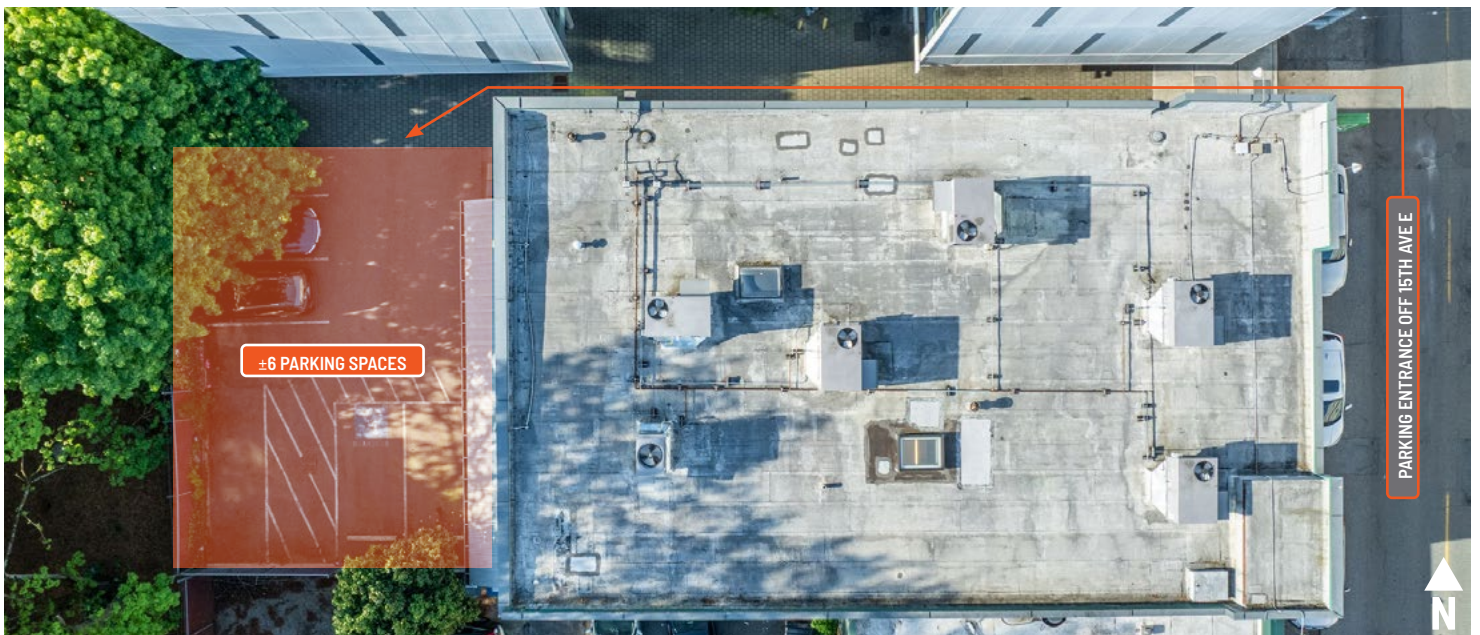
115 15TH AVE E, SEATTLE, WA 98112

Basement | 1,715 RSF | Renovated 2016

Available only with first floor or full building lease



Onsite Parking



FOR MORE INFO
CONTACT

BOJIDAR GABROVSKI
JACK DEANE
JACK FRANZ

bgabrovski@orioncp.com
jdeane@orioncp.com
jfranz@orioncp.com

847.275.8474
206.707.1315
925.482.7232

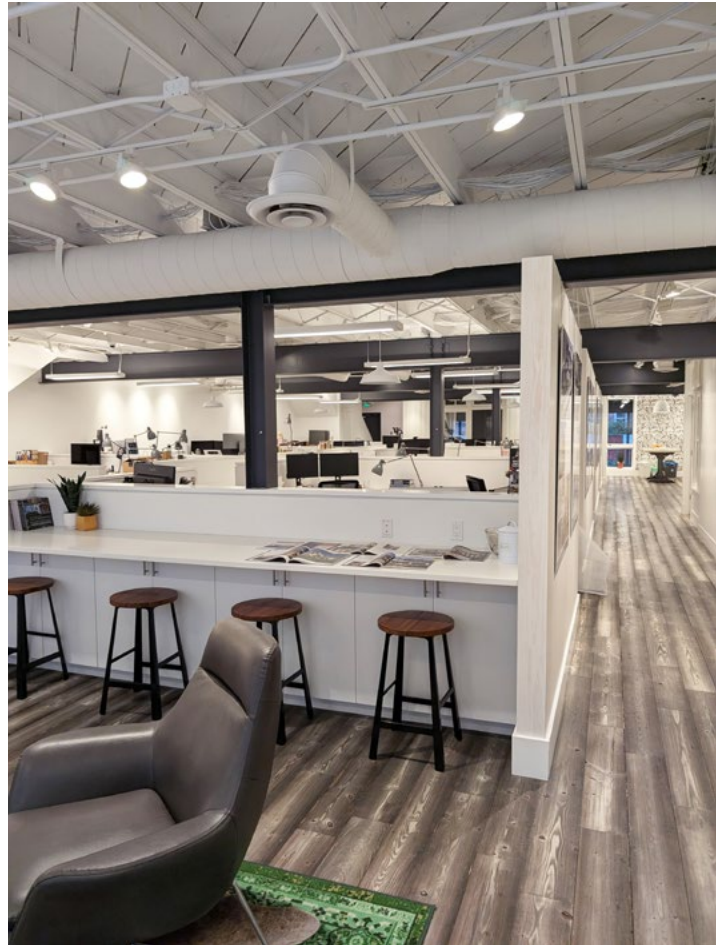
1218 Third Ave, Suite 2200
Seattle, WA 98101
www.orioncp.com

ORION
COMMERCIAL PARTNERS

Office / Service Retail Space for Lease

AVAILABLE: 3,794 – 9,397 RSF | CAPITOL HILL LOCATION

115 15TH AVE E, SEATTLE, WA 98112



FOR MORE INFO
CONTACT

BOJIDAR GABROVSKI
JACK DEANE
JACK FRANZ

bgabrovski@orioncp.com
jdeane@orioncp.com
jfranz@orioncp.com

847.275.8474
206.707.1315
925.482.7232

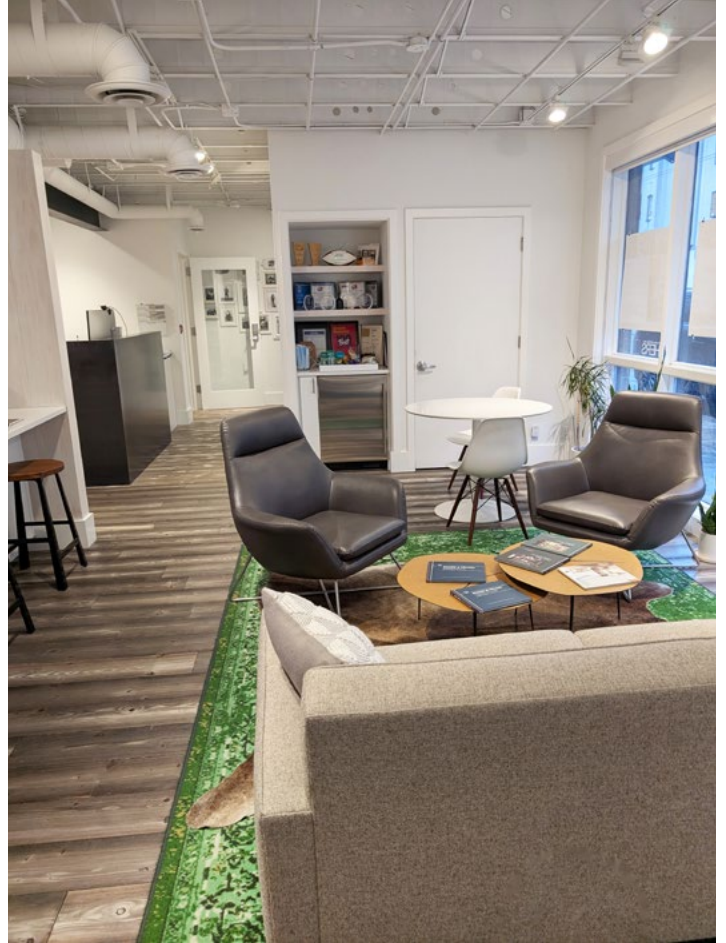
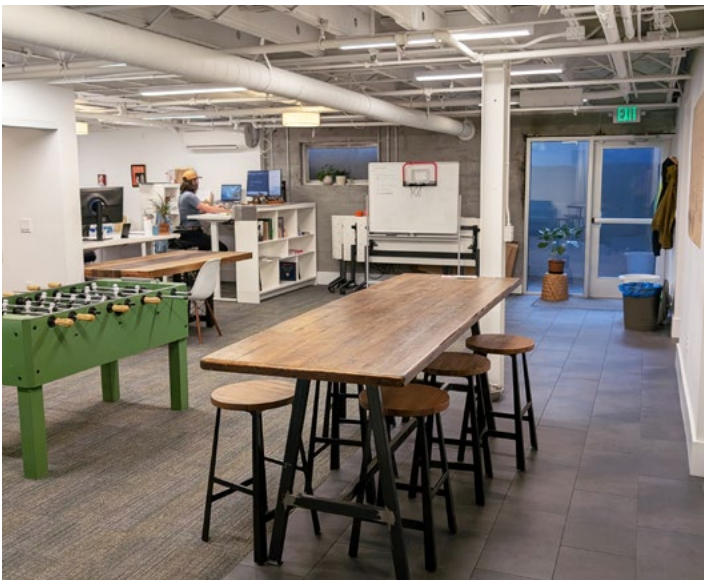
1218 Third Ave, Suite 2200
Seattle, WA 98101
www.orioncp.com

ORION
COMMERCIAL PARTNERS

Office / Service Retail Space for Lease

AVAILABLE: 3,794 – 9,397 RSF | CAPITOL HILL LOCATION

115 15TH AVE E, SEATTLE, WA 98112



FOR MORE INFO
CONTACT

BOJIDAR GABROVSKI
JACK DEANE
JACK FRANZ

bgabrovski@orioncp.com
jdeane@orioncp.com
jfranz@orioncp.com

847.275.8474
206.707.1315
925.482.7232

1218 Third Ave, Suite 2200
Seattle, WA 98101
www.orioncp.com

ORION
COMMERCIAL PARTNERS

Office / Service Retail Space for Lease

AVAILABLE: 3,794 – 9,397 RSF | CAPITOL HILL LOCATION

115 15TH AVE E, SEATTLE, WA 98112

Location Highlights

- Capitol Hill neighborhood with strong retail, dining, and residential density
- 11 minute walk to Light Rail
- 10 minute commute to Downtown Seattle
- 11 minute commute to South Lake Union

The map shows the Capitol Hill neighborhood in Seattle, WA, centered around 115 15th Ave E. The I-5 Express highway runs vertically through the center. Surrounding areas include South Lake Union, Cascade, First Hill, and Cherry Hill. Numerous businesses and landmarks are marked with icons and labels, including Starbucks, QFC, Safeway, Trader Joe's, 7-Eleven, and Whole Foods Market. The map also shows major streets like Fairview Ave N, Bellevue Ave E, and Pike St.

FOR MORE INFO
CONTACT

BOJIDAR GABROVSKI
JACK DEANE
JACK FRANZ

bgabrovski@orioncp.com
jdeane@orioncp.com
jfranz@orioncp.com

847.275.8474
206.707.1315
925.482.7232

1218 Third Ave, Suite 2200
Seattle, WA 98101
www.orioncp.com

ORION
COMMERCIAL PARTNERS