



FOR LEASE

1614 KALAKAUA AVE



1614 Kalakaua Avenue
Honolulu, HI 96826

Prime Commercial Space at 1614 Kalakaua Ave, Honolulu, HI

Situated in a bustling commercial corridor, 1614 Kalakaua Avenue offers an exceptional opportunity for businesses seeking a high-visibility location. This property features prominent signage, ensuring strong brand presence along a well-trafficked area. Convenient access to a bus line makes it easily reachable for employees and customers alike. Additionally, the space includes dedicated storage, providing practical solutions for business operations.

Surrounded by major financial institutions such as Hawaii National Bank, Central Pacific Bank, American Savings Bank, Territorial Savings Bank, and First Hawaiian Bank, as well as popular retailers and dining options like Starbucks, L&L Hawaiian Barbecue, and Times Supermarkets.



This property benefits from a vibrant business environment. Its strategic location and key amenities make it an ideal space for a variety of business needs.

FOR LEASE

1614 KALAKAUA AVE

Retail and Office Space | 600 - 1230 SF of Space Available

Page 4: STE 102 | 630 SF

Page 5: STE 201 | 600 SF

Base Rent

Unit 102: \$6.5/sq.ft. per mo.

Unit 201: \$2.25 sq. ft. per mo.

CAM

TBD

Parking Ratio

3.02 Spaces/1,000 SF

Lease Term

2 Year with 1 Year Option

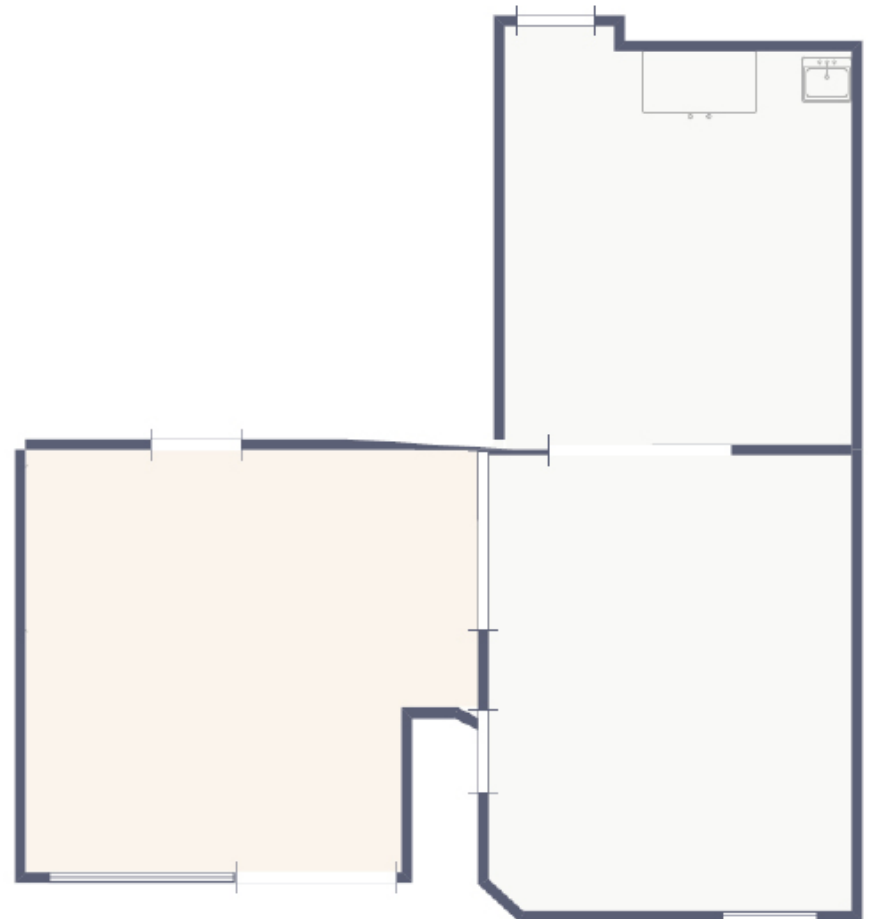
SUITE 102

1614 Kalakaua Ave.

Floor 1
630 SF

Prime Retail Space Available –

- 630 SF retail space – Perfect for a shop or service business
- \$6.5/SF/Mo – Competitive pricing for a prime location
- Modified Gross lease – Convenient and straightforward leasing structure
- Immediate availability – Move in now and start your business right away
- High-visibility location – Ideal for driving foot traffic to your business
- Ample space for growth – Room to showcase your brand and offerings



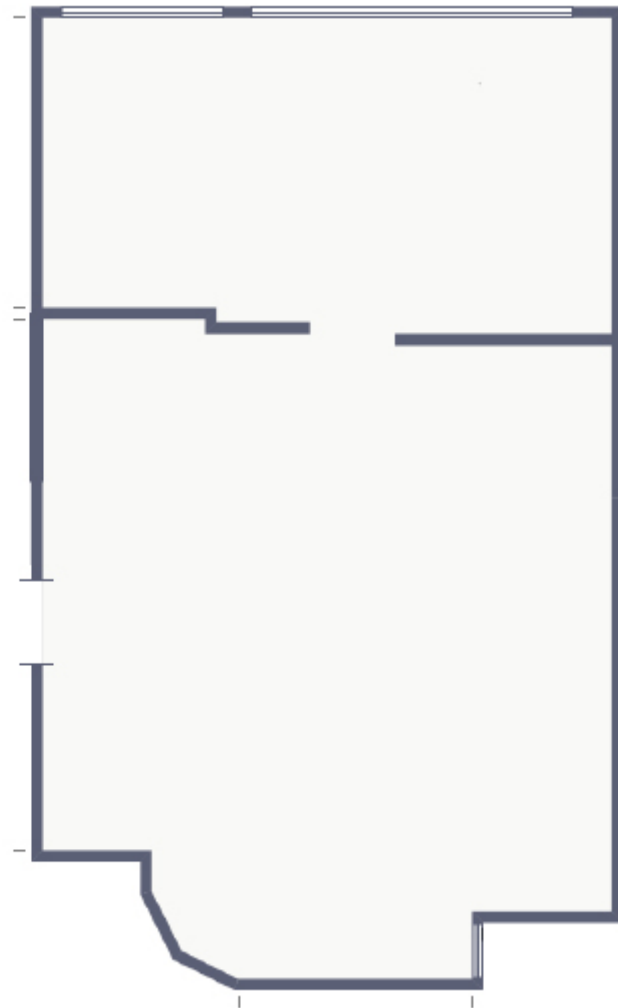
SUITE 201

1614 Kalakaua Ave.

Floor 2
600 SF

Flexible Office Space Available –

- 600 SF office space – Ideal for a small team or growing business
- Fits 2-5 people – Perfect for a small office or startup
- \$2.25/SF/MO – Affordable pricing for quality office space
- Negotiable lease terms – Options to suit your business needs
- Immediate availability – Move in and start working right away
- Convenient layout – Versatile space to create your ideal office environment



Suite 201 Photos





PACIFIC
PROPERTY
GROUP INC

CONTACT US

Keane Omaye-Backman
Lic. RS-76415
Keane@pacificpropertygrouphawaii.com
(808) 292-6861

Wyatt Santilena
Lic. RS-87287
wyatt@pacificpropertygrouphawaii.com
(808) 421-8556

Miles Kamimura
Lic. RB-15589
miles@pacificpropertygrouphawaii.com
(808) 592-0200