

# WEST JORDAN WAREHOUSE FOR LEASE

5320 WELLS PARK ROAD, WEST JORDAN 84081



## PROPERTY INFORMATION

- Warehouse with Office Available 2/1/2026
- Suite 13: 2,617 SF
- (1) 10' x 10' GL Door
- 3 Phase Power Throughout Shop
- 12' Clear Height
- Zoned: M-1
- Heated
- (2) Water Heaters
- Ample Parking
- Easy Access to Mtn View Corridor

LEASE RATE : \$1.25/SF MONTH NNN

WEST HARADIN

**801.617.1700**

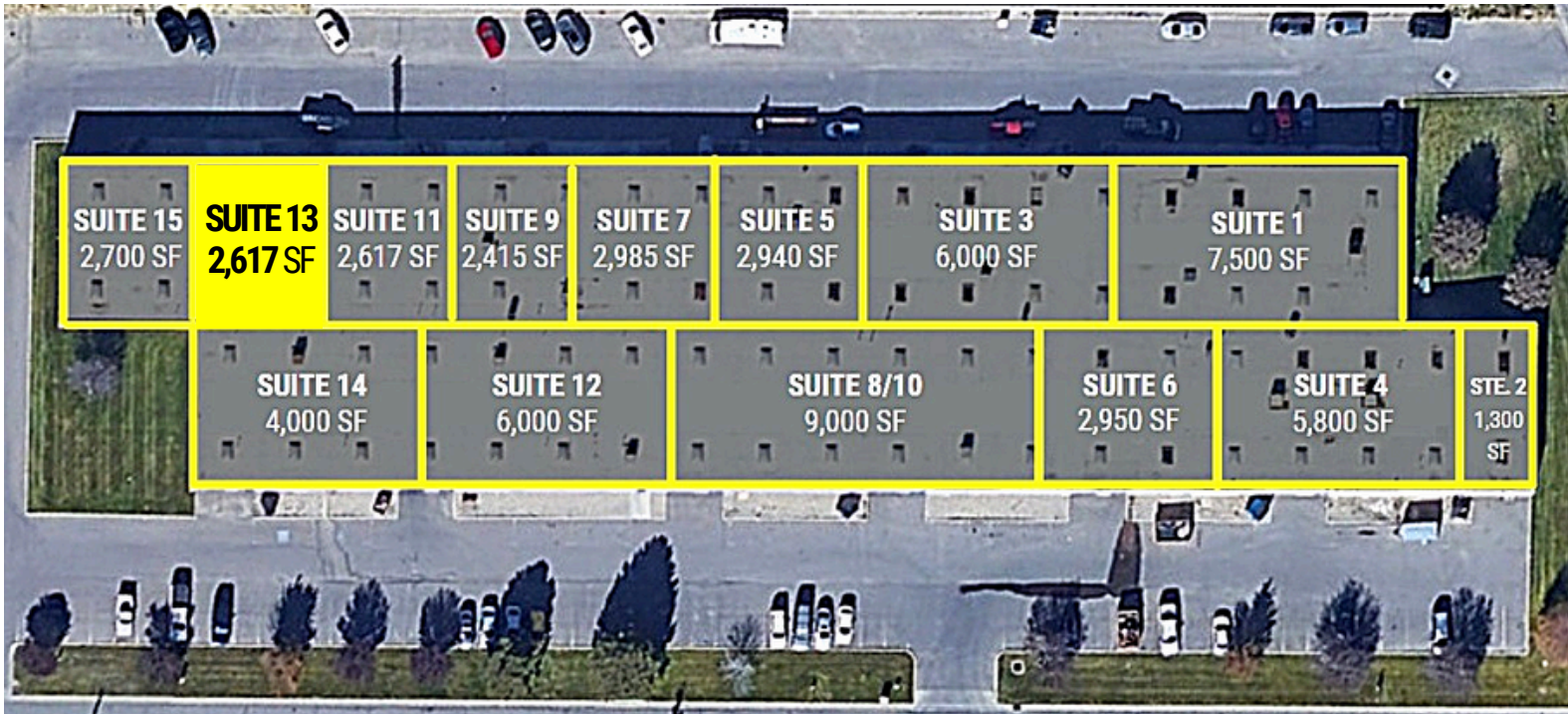
JEREMY SIEVERTS

WEST.HARADIN@CRCNATIONWIDE.COM JEREMY.SIEVERTS@CRCNATIONWIDE.COM

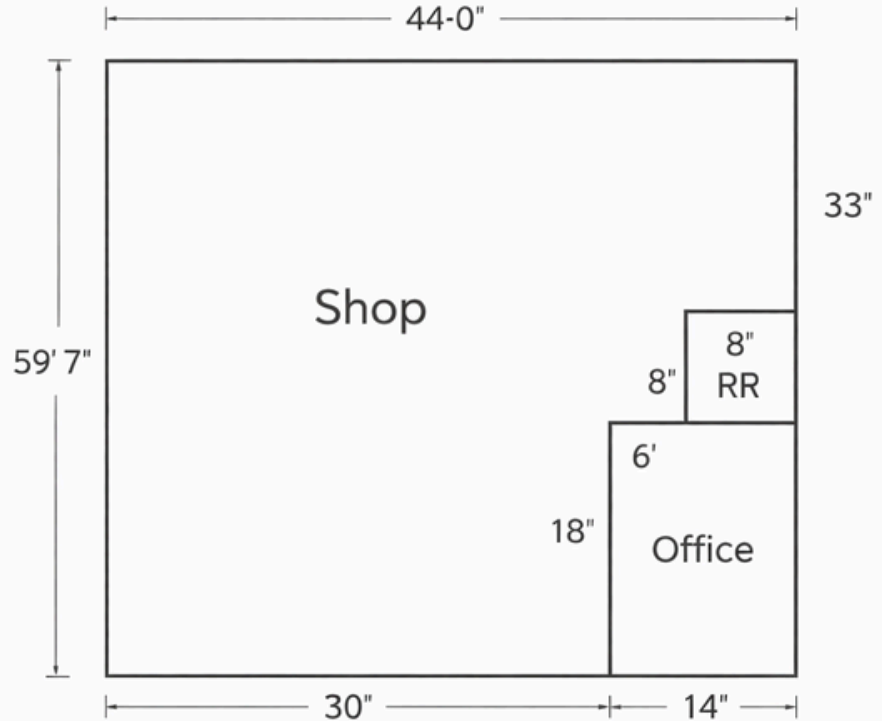


# WEST JORDAN WAREHOUSE FOR LEASE

5320 WELLS PARK ROAD, WEST JORDAN 84081



## SUITE 13: 2,617 SF



This information is given with the understanding that all negotiations and/or real estate activity related to the property described above shall be conducted through this cRc Nationwide office. The above information, while not guaranteed, was obtained from sources we believe to be reliable.

WEST HARADIN

**801.617.1700**

JEREMY SIEVERTS

WEST.HARADIN@CRCNATIONWIDE.COM JEREMY.SIEVERTS@CRCNATIONWIDE.COM