

Gulfoast Industrial Campus

16140 Lee Rd, Units 120 & 140
Fort Myers, FL



COMMERCIAL
PROPERTY
SOUTHWEST FLORIDA



For Sub-Lease

Property Highlights

- Newly constructed in 2018
- Metal frame with concrete construction
- 6 - 16'X16' overhead doors rated withstand 160 mph winds
- 3-phase power
- 24' clear heights
- Units come with fenced in yards
- Units sprinkled
- Above average parking ratio
- Property benefits from heavy industrial zoning

STRAP NUMBER	04-46-25-00-00001.0260
PROPERTY TYPE	Industrial
YEAR BUILT	2018
ZONING	IPD
LEASE EXPIRATION	05/31/2028
LEASE RATE	\$12.00 - \$14.00 NNN
CAM	\$5.24
SUBMARKET	S Fort Myers/San Carlos

Better never settles

GARY TASMAN
CEO / Principal Broker
(239) 489-3600
gtasman@cpswfl.com

Gulfcoast Industrial Campus

16140 Lee Rd, Units 120 & 140
Fort Myers, FL

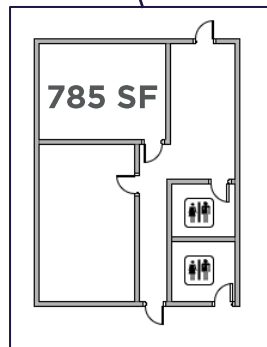
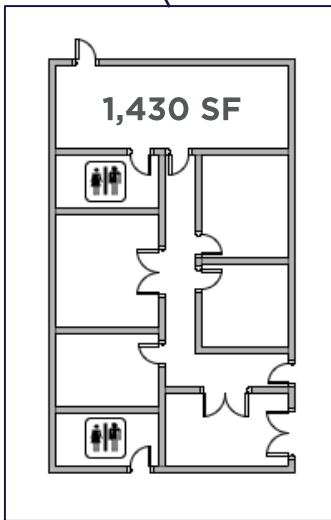
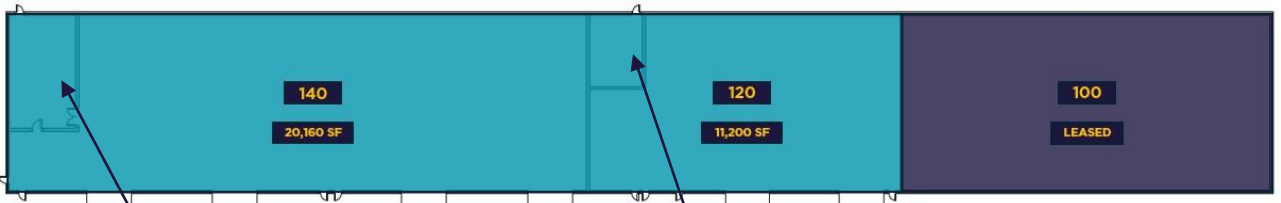


CUSHMAN &
WAKEFIELD

COMMERCIAL
PROPERTY
SOUTHWEST FLORIDA

Availabilities

Building 3 - 16140 Lee Rd



- Can be leased together or separately
- 24' clear height
- Fully sprinkled
- 16 x 16 overhead doors
- 3-phase power
- Lease expiration 5/31/2028

Building 3 - 16140 Lee Rd

Unit	Size	Lease Rate	CAM	Monthly Rent
120	11,200 SF	\$14.00 NNN	\$5.24	\$17,957.33
140	20,160 SF	\$14.00 NNN	\$5.24	\$32,323.20
120/140	31,360 SF	\$12.00 NNN	\$5.24	\$45,053.87

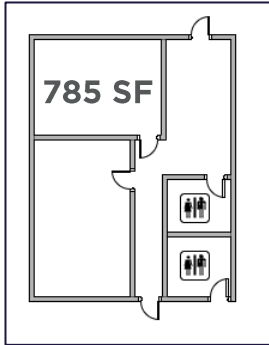
GARY TASMAN
CEO / Principal Broker
(239) 489-3600
gtasman@cpswfl.com

Gulfcoast Industrial Campus

16140 Lee Rd, Units 120 & 140
Fort Myers, FL

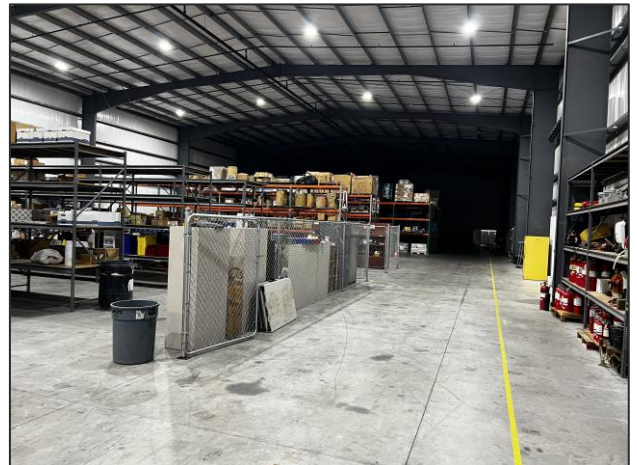
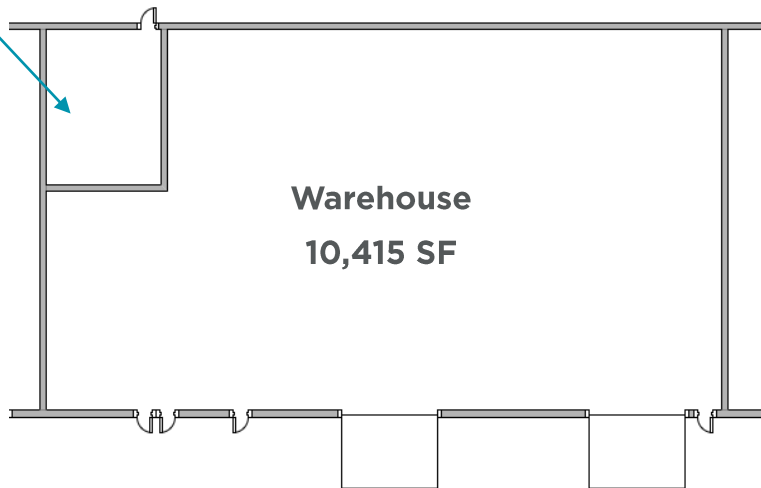
Unit 120 Information

- **+785 SF of Fully built-out office space**
- **24' clear height**
- **2 - 16 x 16 overhead doors**
- **3-phase power**
- **Fully sprinkled**
- **Fenced-in outside storage**



Building 3 - 16140 Lee Rd

Unit	Size	Lease Rate	CAM	Monthly Rent
120	11,200 SF	\$14.00 NNN	\$5.24	\$17,957.33

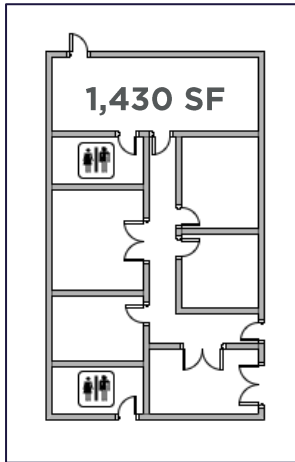


Gulfoast Industrial Campus

16140 Lee Rd, Units 120 & 140
Fort Myers, FL

Unit 140 Information

- **+1,430 SF of Fully built-out office space**
- **24' clear height**
- **4 - 16 x 16 overhead doors**
- **3-phase power**
- **Fully sprinkled**
- **Fenced-in outside storage**



Building 3 - 16140 Lee Rd

Unit	Size	Lease Rate	CAM	Monthly Rent
140	20,160 SF	\$14.00 NNN	\$5.24	\$32,323.20



Gulfoast Industrial Campus

16140 Lee Rd, Units 120 & 140
Fort Myers, FL



COMMERCIAL
PROPERTY
SOUTHWEST FLORIDA



16' x 16'
overhead
doors



24' clear
height



Heavy
industrial
zoning



3-phase power



ESFR
Sprinklers

Better never settles

GARY TASMAN
CEO / Principal Broker
(239) 489-3600
gtasman@cpswfl.com