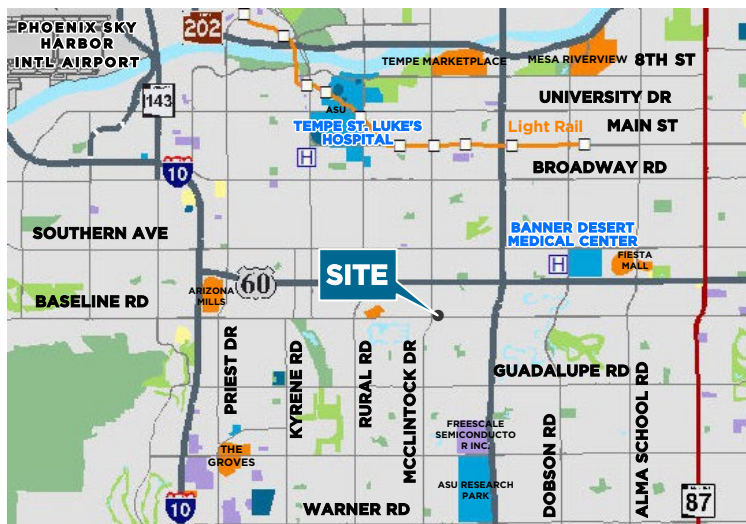


1840-1844 East Baseline Road

Baseline Dental Medical Center | Tempe, Arizona 85283



Property Features

- Single-story, garden-style, multitenant building
 - Excellent location with abundant parking
 - Attractive courtyard with garden planter
 - Monument signage available
 - Easy access to US-60 and Price Freeway (Loop 101)
 - Available Suites
 - Suite A-3 | ±1,104 SF - Medical*
 - Suite C-4 | ±1,335 SF - Shell*
 - Suite B-1 | ±2,192 RSF
- *Contiguous to ±2,573 SF
- Lease Rates from \$18.00/RSF Full service, net janitorial

For more information:

Tom Weinhold
Managing Director
+1 602 224 4428
tom.weinhold@cushwake.com

Sheila Bale
Managing Director
+1 602 224 4454
sheila.bale@cushwake.com

Erika Eckblad
Senior Associate
+1 602 224 4451
erika.eckblad@cushwake.com

2555 E. Camelback Rd., Suite 400
Phoenix, Arizona 8516
ph: +1 602 954 9000
fx: +1 602 253 0528

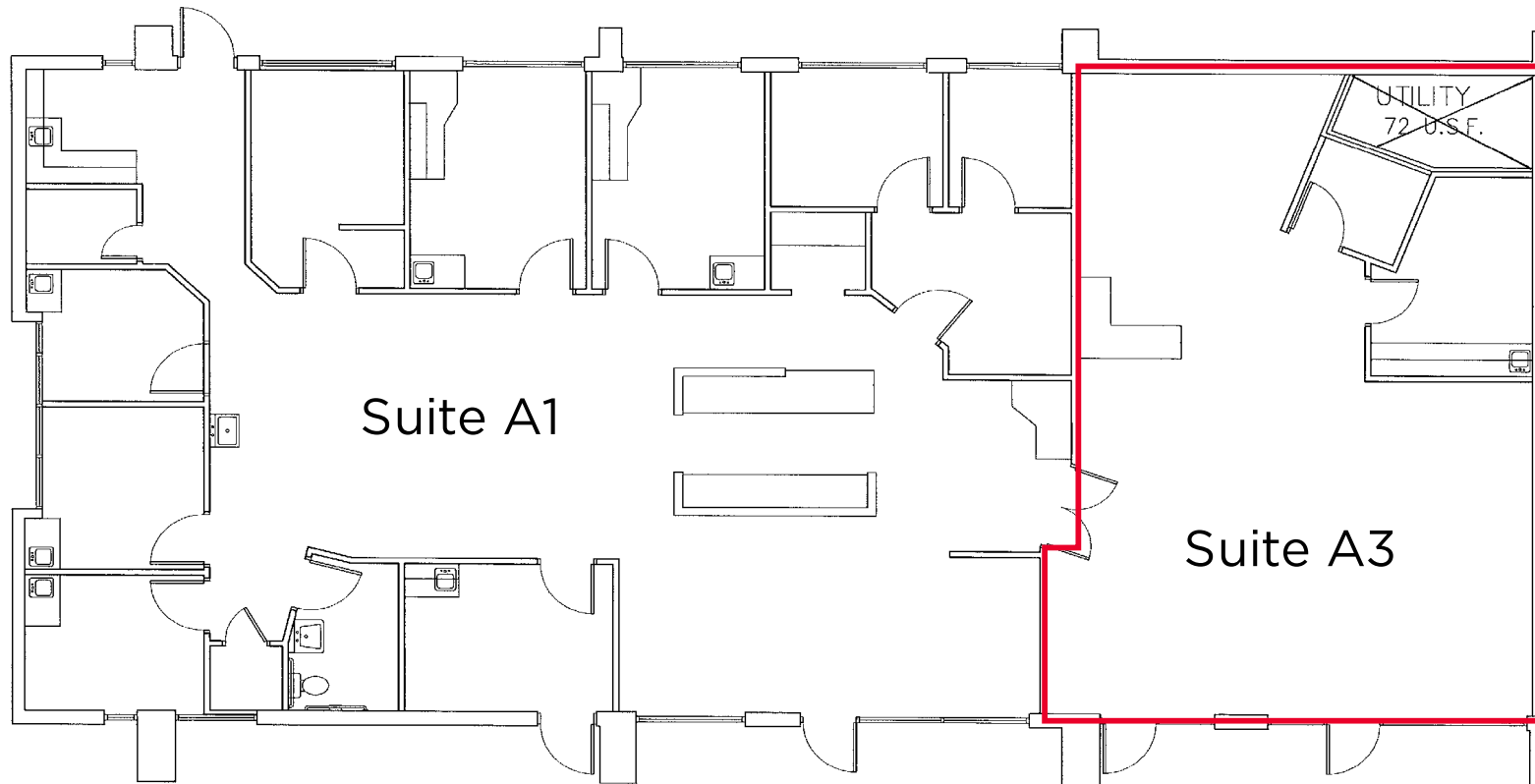
cushmanwakefield.com

1840-1844 East Baseline Road

Baseline Dental Medical Center | Tempe, Arizona 85283



FLOOR PLAN | Suite A-3 | ±1,104 RSF



For more information, please contact:

Tom Weinhold

Managing Director

+1 602 224 4428

tom.weinhold@cushwake.com

Sheila Bale

Managing Director

+1 602 224 4454

sheila.bale@cushwake.com

Erika Eckblad

Senior Associate

+1 602 224 4451

erika.eckblad@cushwake.com

2555 E Camelback Rd., Suite 400

Phoenix, Arizona 85016

M: +1 602 954 9000

F: +1 602 253 0528

cushmanwakefield.com

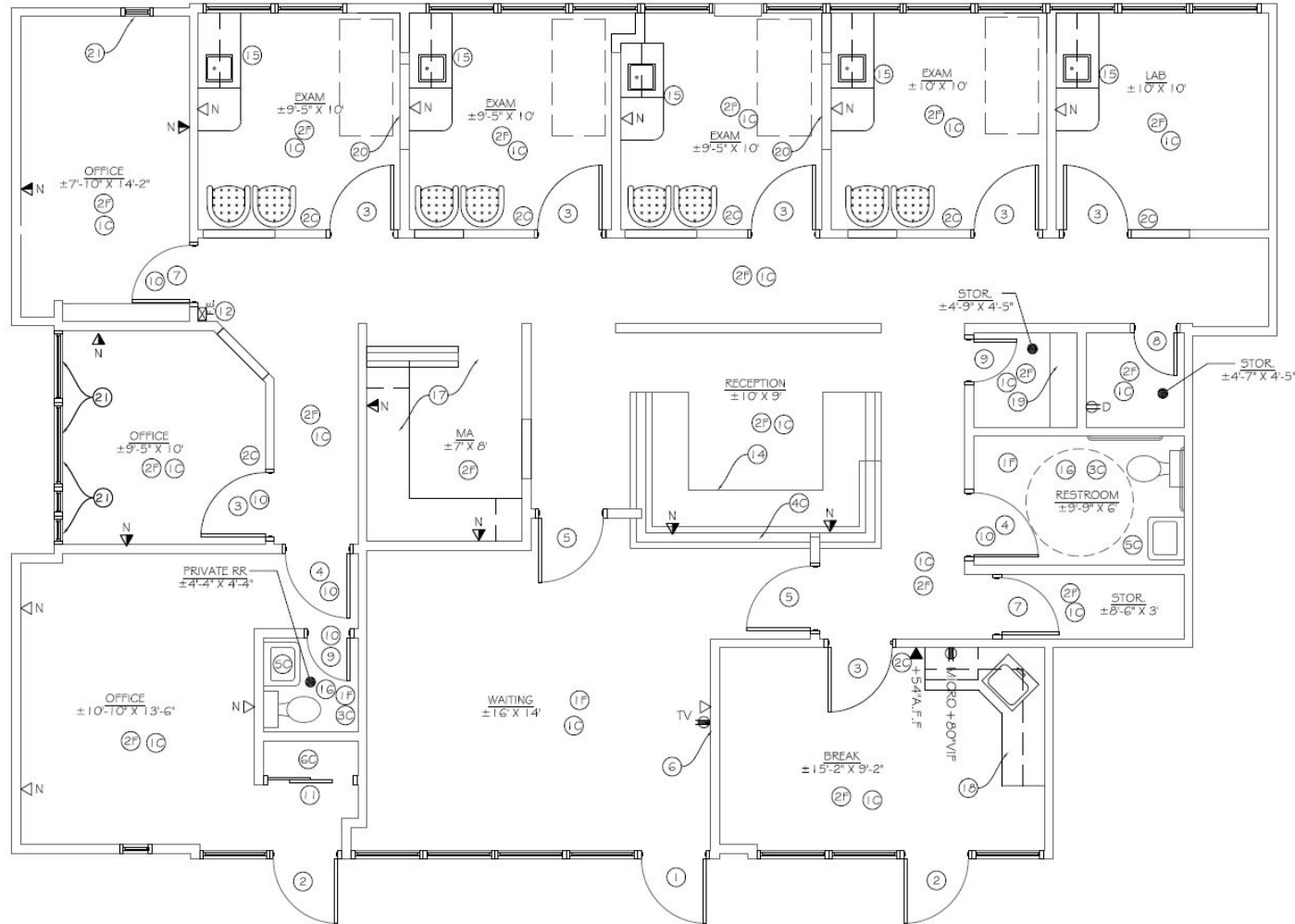
©2024 Cushman & Wakefield. All rights reserved. The information contained in this communication is strictly confidential. This information has been obtained from sources believed to be reliable but has not been verified. NO WARRANTY OR REPRESENTATION, EXPRESS OR IMPLIED, IS MADE AS TO THE CONDITION OF THE PROPERTY (OR PROPERTIES) REFERENCED HEREIN OR AS TO THE ACCURACY OR COMPLETENESS OF THE INFORMATION CONTAINED HEREIN, AND SAME IS SUBMITTED SUBJECT TO ERRORS, OMISSIONS, CHANGE OF PRICE, RENTAL OR OTHER CONDITIONS, WITHDRAWAL WITHOUT NOTICE, AND TO ANY SPECIAL LISTING CONDITIONS IMPOSED BY THE PROPERTY OWNER(S). ANY PROJECTIONS, OPINIONS OR ESTIMATES ARE SUBJECT TO UNCERTAINTY AND DO NOT SIGNIFY CURRENT OR FUTURE PROPERTY PERFORMANCE.

1840-1844 East Baseline Road

Baseline Dental Medical Center | Tempe, Arizona 85283



FLOOR PLAN | Suite B-1 | ±2,192 RSF



For more information, please contact:

Tom Weinhold

Managing Director
+1 602 224 4428
tom.weinhold@cushwake.com

Sheila Bale

Managing Director
+1 602 224 4454
sheila.bale@cushwake.com

Erika Eckblad

Senior Associate
+1 602 224 4451
erika.eckblad@cushwake.com

2555 E Camelback Rd., Suite 400
Phoenix, Arizona 85016
M: +1 602 954 9000
F: +1 602 253 0528
cushmanwakefield.com

©2024 Cushman & Wakefield. All rights reserved. The information contained in this communication is strictly confidential. This information has been obtained from sources believed to be reliable but has not been verified. NO WARRANTY OR REPRESENTATION, EXPRESS OR IMPLIED, IS MADE AS TO THE CONDITION OF THE PROPERTY (OR PROPERTIES) REFERENCED HEREIN OR AS TO THE ACCURACY OR COMPLETENESS OF THE INFORMATION CONTAINED HEREIN, AND SAME IS SUBMITTED SUBJECT TO ERRORS, OMISSIONS, CHANGE OF PRICE, RENTAL OR OTHER CONDITIONS, WITHDRAWAL WITHOUT NOTICE, AND TO ANY SPECIAL LISTING CONDITIONS IMPOSED BY THE PROPERTY OWNER(S). ANY PROJECTIONS, OPINIONS OR ESTIMATES ARE SUBJECT TO UNCERTAINTY AND DO NOT SIGNIFY CURRENT OR FUTURE PROPERTY PERFORMANCE.