



marcus



Entitled Multi-Family
Development Opportunity

838 LOKAHI STREET

Honolulu, HI 96826



Proposed Renderings



Learn more at
marcushawaii.com

*Seller & Seller's brokerage make no guarantees on any
information contained herein.*

838 LOKAHI ST
HONOLULU, HI
3,600 SQUARE FEET FOR SALE



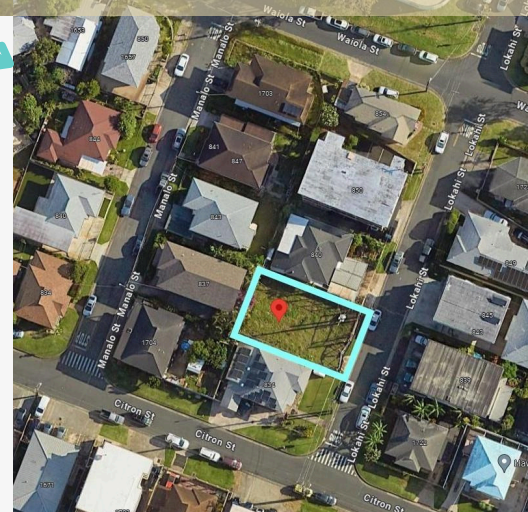
our
kaka'ako



PROPERTY SUMMARY

- ASKING PRICE: \$1,295,000
- TMK (1) 2-3-24:11
- TENURE: FEE SIMPLE
- ZONING: A-2
- PROP. TAX: \$282/MO.

BILL 7 BUILDING PERMIT APPROVED BY ALL DPP DEPARTMENTS! Once trenching permit is approved and contractor is named, permit is ready to be issued. 3,600 sf of A-2 zoned, cleared lot in a central, quiet location in the McCully neighborhood. Plans available for a 4- story, 18 studio unit walk-up. Declaration of Restrictive Covenants, geotech report,...etc. are completed. Please call Listor for additional details. Signed confidentiality agreement required before release of documents. Do not enter property without an appointment.



Kevin Nishikawa

President | Partner - Commercial Division
RB-17304

(808) 220-9220

kevin@marcushawaii.com



Alexander C Yen

AVP | Commercial Division
RA-81293

(808) 392-6475

alexandery@marcushawaii.com



www.MarcusHawaii.com

Seller or Seller's brokerage makes no guarantees on any information contained herein.