



## INDUSTRIAL SPACE FOR LEASE

# 6701-6749 E. 50th Ave.

### COMMERCE CITY, CO



## Building Information

UNIT	SIZE	OFFICE	LOADING	RATE	AVAILABLE
6727-6735	14,711 SF	1,935 SF	Three (3) Dock High (Potential for 4)	\$8.50/SF NNN	August 1, 2025
<div><div></div>Clear Height: 16'-17'</div> <div><div></div>Power: TBD</div> <div><div></div>Construction: Block/Concrete</div> <div><div></div>Zoning: I-1 (S)</div> <div><div></div>Sprinkler: None</div> <div><div></div>Lease Rate: \$8.50/SF NNN</div> <div><div></div>NNN: \$5.26/SF (Est. 2026)</div>					

\* Yard available at additional charge

## Highlights

- > Great visibility on 50th Avenue
- > Close to all highways
- > Yard available



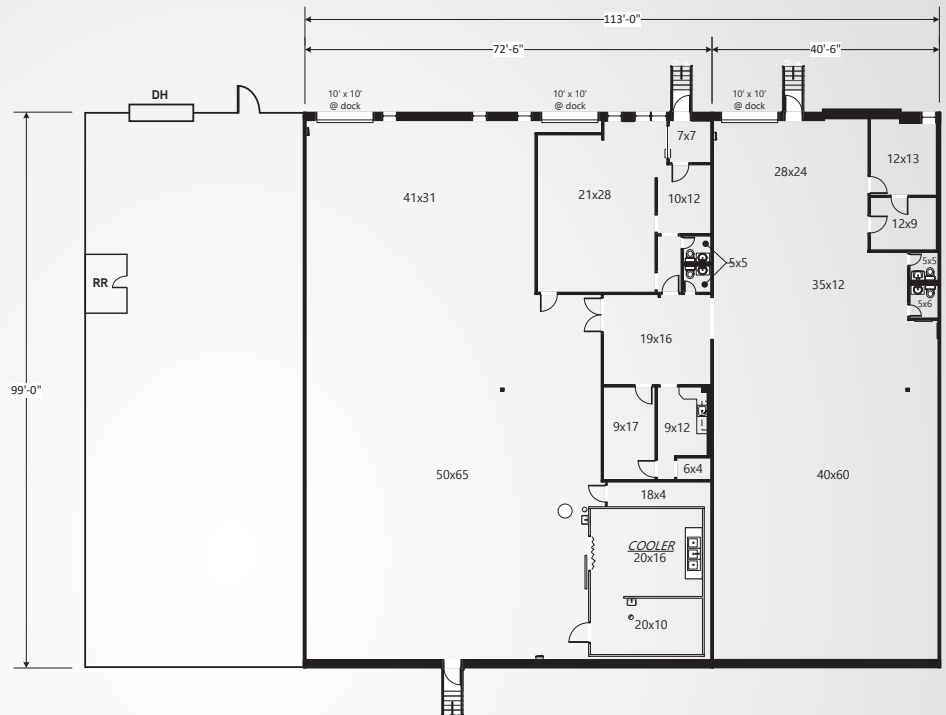
TIM SHAY  
303 283 4594  
tim.shay@colliers.com

Accelerating success.

6701-6749 E. 50th Ave.  
Commerce City, CO

## Contact Us

4643 South Ulster Street  
Suite 1000  
Denver, CO 80237  
MAIN +1 303 745 5800  
FAX +1 303 745 5888  
[www.colliers.com/denver](http://www.colliers.com/denver)



BROKERAGE  
DISCLOSURE

