



FOR SALE

±1.4 to ±2.785 Acres **\$575,000**
 📍 HWY 28 BYPASS, ANDERSON, SC 29624

Can be purchased as one ±2.785 AC parcel or subdivided into two (2) ±1.4 AC parcels

272.5' of Frontage on Hwy 28 Bypass in West Anderson

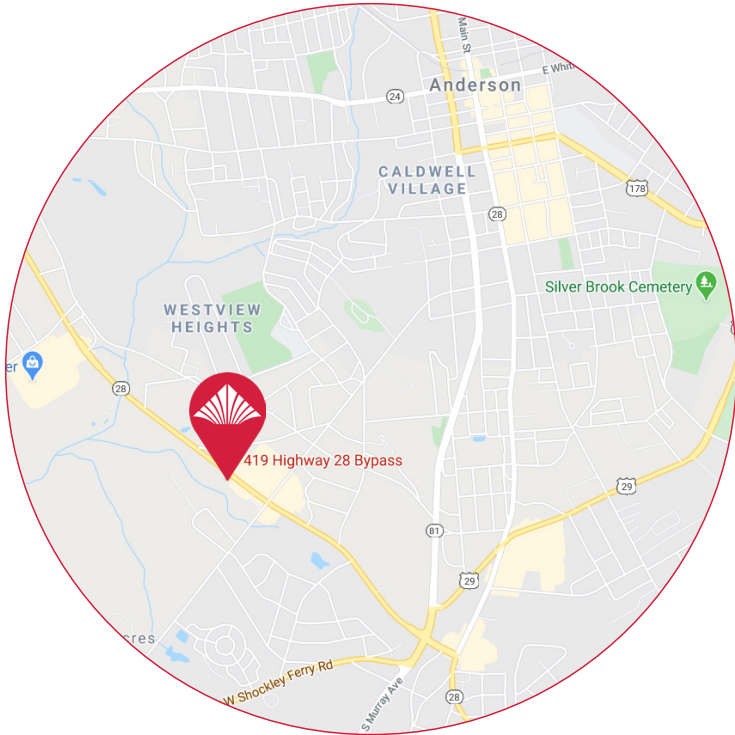
198' of Frontage on Danbury Lane (Average Traffic Count: ±21,700 Vehicles Per Day)

Just 5.9 miles to I-85 with access to Greenville/Spartanburg to the North and Atlanta, GA to the South

Close proximity to Tri-County Technical College, Anderson University, Lakeside Middle School, Westside High School

National retailers nearby include Walmart & Aldi

Sewer, Water, and Natural Gas Available. **Ground Lease may be considered.**



CONTACT:

SCOTT SNEDIGAR | ssnedigar@wilsonkibler.com | 864.444.4814



WILSON KIBLER | 13 E COFFEE ST GREENVILLE, SC 29601 | 803.779.8600 | www.wilsonkibler.com

The information contained herein has been obtained from sources we believe to be reliable; however, Wilson Kibler has not conducted any investigation regarding these matters and makes no warranty or representation whatsoever regarding the accuracy or completeness of the information provided.

±1.4 to ±2.785 Acres

HWY 28 BYPASS ANDERSON, SC 29624



CONTACT:

SCOTT SNEDIGAR | ssnedigar@wilsonkibler.com | 864.444.4814

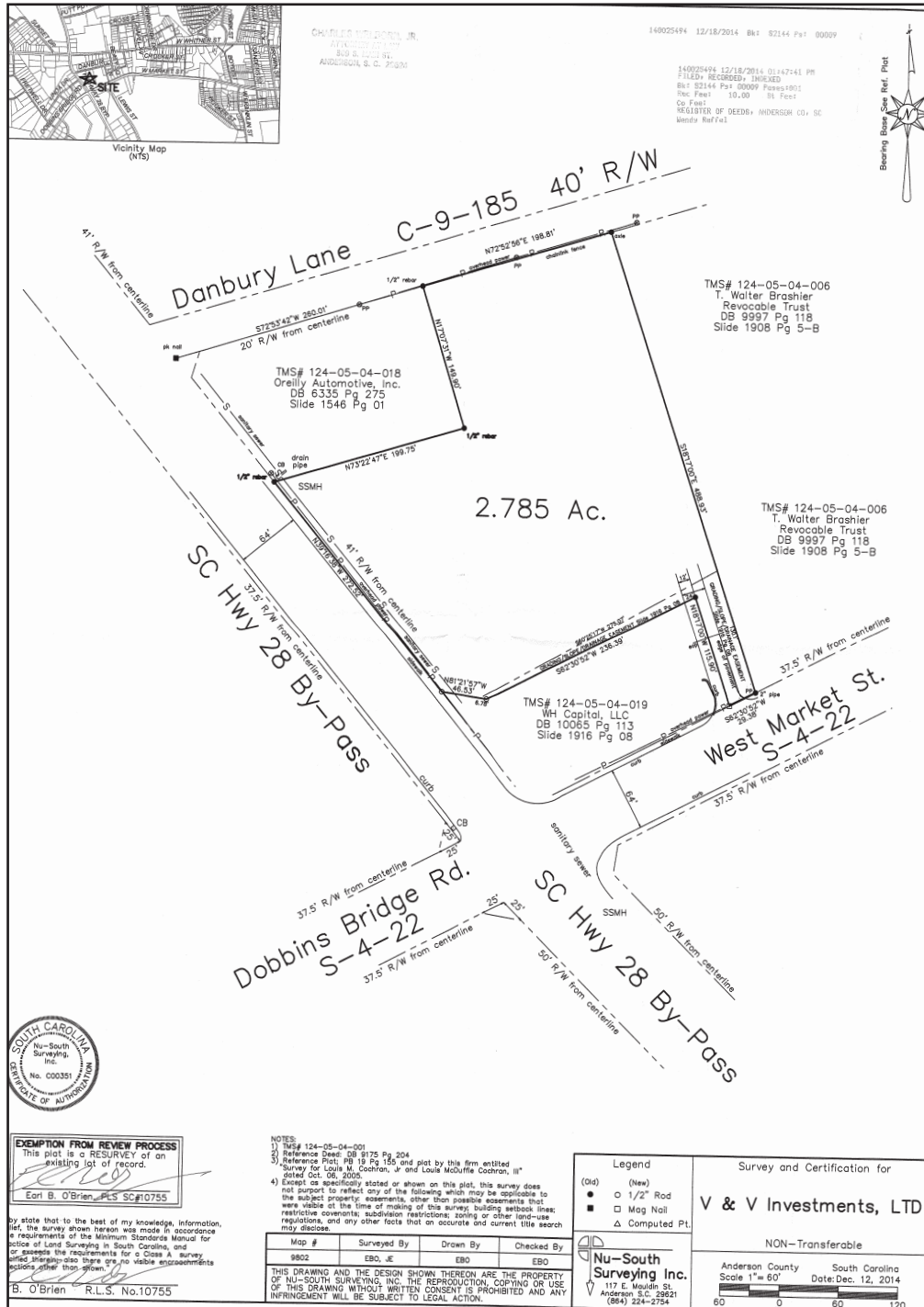
WILSON KIBLER | 13 E COFFEE ST GREENVILLE, SC 29601 | 803.779.8600 | www.wilsonkibler.com

The information contained herein has been obtained from sources we believe to be reliable; however, Wilson Kibler has not conducted any investigation regarding these matters and makes no warranty or representation whatsoever regarding the accuracy or completeness of the information provided.



±1.4 to ±2.785 Acres

HWY 28 BYPASS ANDERSON, SC 29624



CONTACT:

SCOTT SNEDIGAR | ssnedigar@wilsonkibler.com | 864.444.4814

WILSON KIBLER | 13 E COFFEE ST GREENVILLE, SC 29601 | 803.779.8600 | www.wilsonkibler.com

The information contained herein has been obtained from sources we believe to be reliable; however, Wilson Kibler has not conducted any investigation regarding these matters and makes no warranty or representation whatsoever regarding the accuracy or completeness of the information provided.



±1.4 to ±2.785 Acres

HWY 28 BYPASS ANDERSON, SC 29624



WATER AND SEWER ASSETS

The maps and data provided by this site are prepared by the City of Anderson GIS department. The City of Anderson makes no warranty, representation or guarantee as to the content, accuracy or reliability of the information provided herein. Users of this data are hereby notified that the public information sources should be consulted for verification of the information contained on this website. The City of Anderson assumes no liability for any errors, omissions or inaccuracies in the information provided regardless of how caused, or, for any decision made or action taken by any person in reliance upon any information or data furnished herein.

Legend

- Water Mains
- Hydrant
- Manhole
- Sewer Main



CONTACT:

SCOTT SNEDIGAR | ssnedigar@wilsonkibler.com | 864.444.4814

WILSON KIBLER | 13 E COFFEE ST GREENVILLE, SC 29601 | 803.779.8600 | www.wilsonkibler.com

The information contained herein has been obtained from sources we believe to be reliable; however, Wilson Kibler has not conducted any investigation regarding these matters and makes no warranty or representation whatsoever regarding the accuracy or completeness of the information provided.

