



# 2020 WILLIAMS ST

SAN LEANDRO, CALIFORNIA

± 100,293 SQUARE FEET

## PROPERTY DETAIL

- ±100,293 square feet
- Office area/showroom:
  - 1st Floor: ±11,781 square feet
  - 2nd Floor: ±11,400 square feet
- Power: 1,200 amps
- 16'-18' clear height
- 1 loading dock
- 3 roll up doors
- 2 rail doors
- Active rail
- Fire sprinklers



### Eddie Shuai

Senior Managing Director

LICENSE #01454419

m +1 415 336 3573

e eddie.shuai@jll.com

### Kristi Childers

Managing Director

LICENSE #01997043

m +1 510 812 2878

e kristi.childers@jll.com

### Zack Cauz

Associate

LICENSE #02340691

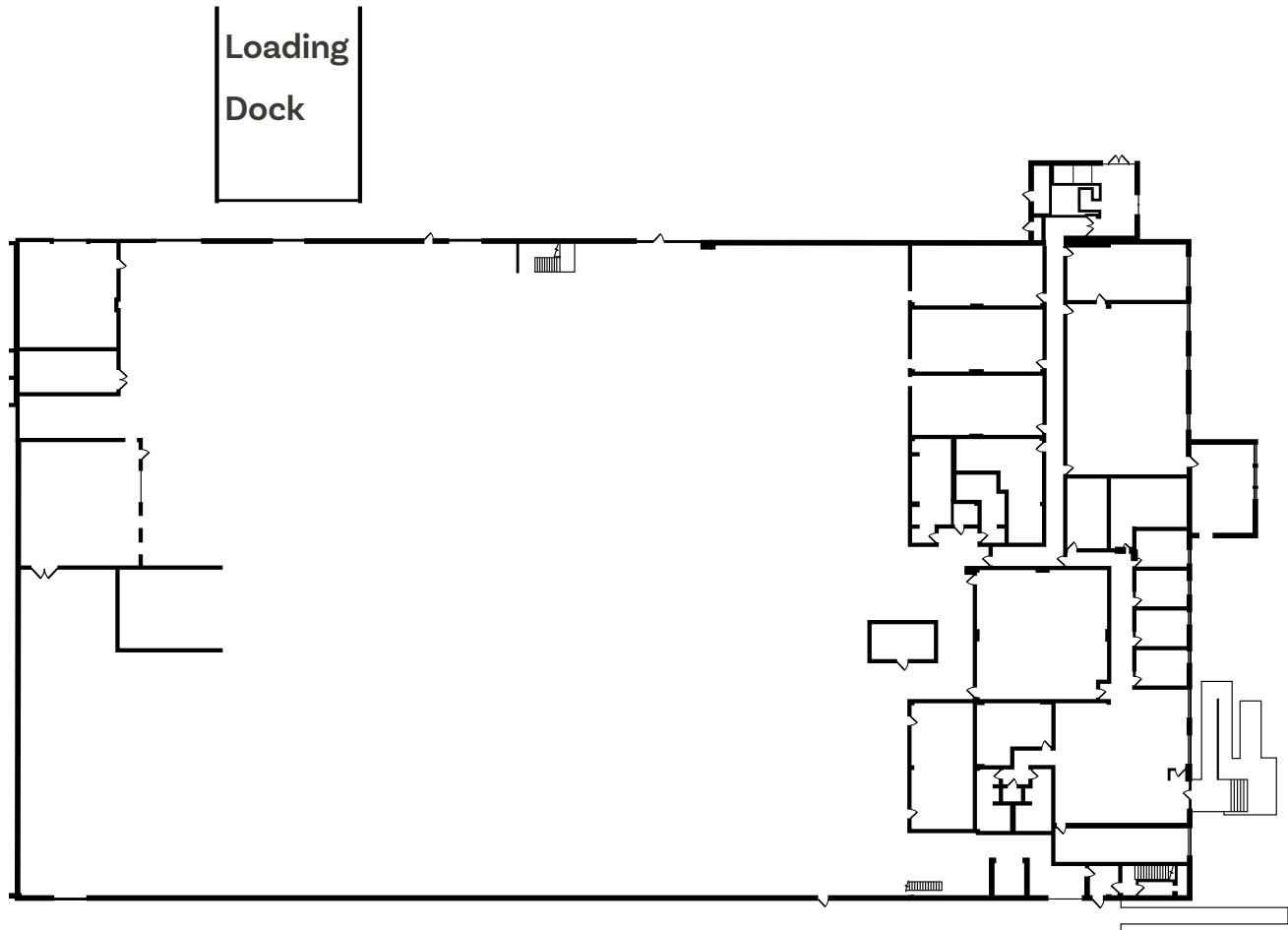
m +1 415 912 0794

e zack.cauz@jll.com

# 2020 WILLIAMS ST

SAN LEANDRO, CALIFORNIA

± 100,293 SQUARE FEET



Although information has been obtained from sources deemed reliable, neither Owner nor JLL makes any guarantees, warranties or representations, express or implied, as to the completeness or accuracy as to the information contained herein. Any projections, opinions, assumptions or estimates used are for example only. There may be differences between projected and actual results, and those differences may be material. The Property may be withdrawn without notice. Neither Owner nor JLL accepts any liability for any loss or damage suffered by any party resulting from reliance on this information. If the recipient of this information has signed a confidentiality agreement regarding this matter, this information is subject to the terms of that agreement. ©2025. Jones Lang LaSalle IP, Inc. All rights reserved.