

JONESBOROUGH LAND

Old State Route 34
Jonesborough, TN 37659

Location

At the intersection of Old State Route 34 and West Main Street in Jonesborough

Available for Sale

4.48 acres
\$156,800

Highlights

Adjacent to Dollar General

Proximal to two apartment complexes

Approx. 1 mile from International Storytelling Center and Historic Downtown Jonesborough

New traffic circle directly in front of property

Zoned B-3

Traffic Counts

W Main St: 9,495 (2022)
Old State Rte 34: 6,084 (2022)

Demographics

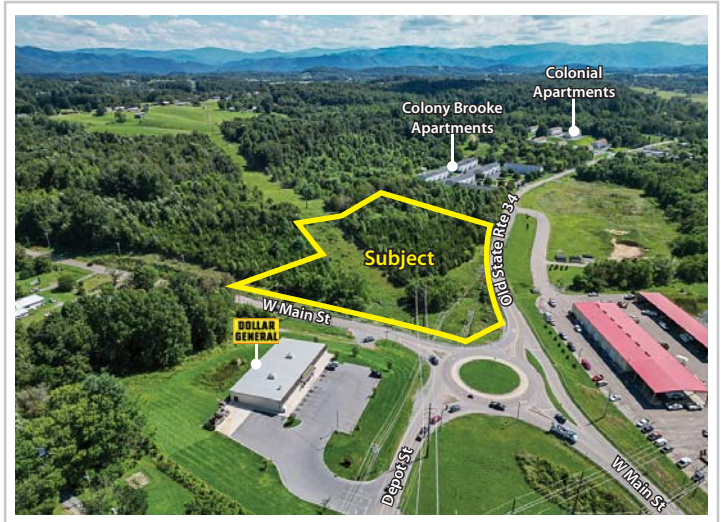
(2020 Est.)	3 mile	5 mile	10 mile
Population	13,948	31,094	132,561
Median HH Income	\$68,438	\$64,290	\$57,097
Median Age	44.7	44.2	41.8

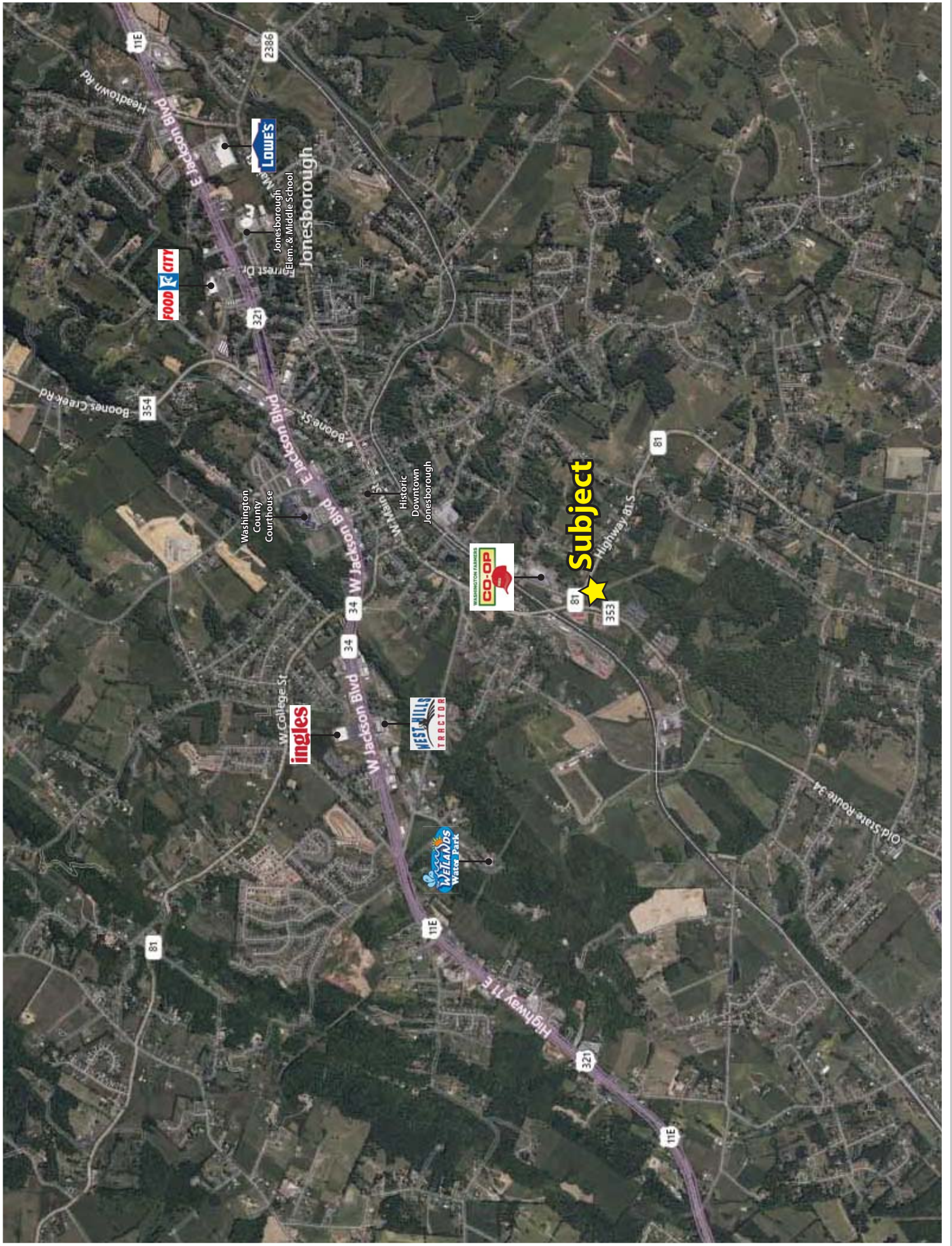
Contact

John Speropulos, CCIM, SIOR
john@mitchcox.com

Marc Murphy, CCIM
mmurphy@mitchcox.com

📞 423-282-6582 | 📠 423-282-5903
www.mitchcox.com





New Traffic Circle

CONNECTOR
(DEPOT STREET)
N 57°30' E
129.94'

96+-
AC

UTILITY LINES

N 71°25' E
247.35'

CENTER LINE OF
POWER LINES

ST. HWY. 61-SOUTH
S 61°30' E
134.46'

3.52+-
AC

OLD ST. RT. 24
N 81°45' E
124.73'

ROSENBLUM & MILLER

ROSENBLUM & MILLER

N 62°20' W
270.70'

N 34°45' E
128.14'

S 80°22' W
119.84'

S 20°12' E
103.12'

S 82°02' W
141.00'

S 47°33' E
97.73'

S 47°03' E
84.74'

S 50°07' E
97.57'

S 10°12' E
72.64'

N 07°57' E
154.93'

N 04°33' E
38.97'

N 14°52' E
85.17'

N 25°12' E
36.51'

S 75°12' W
36.51'

20'

25'

30'

DNV

DNV

DNV

DNV

DNV

DNV

DNV

DNV

DNV

DNV

DNV

DNV

DNV

DNV

DNV

DNV

DNV

DNV

DNV

DNV

DNV

DNV

DNV

DNV

DNV

DNV

DNV

DNV

DNV

DNV

DNV

DNV

DNV

DNV

DNV

DNV

DNV

DNV

DNV

DNV

DNV

DNV

DNV

DNV

DNV

DNV

DNV

DNV

DNV

DNV

DNV

DNV

DNV

DNV

DNV

DNV

DNV

DNV

DNV

DNV

DNV

DNV

DNV

DNV

DNV

DNV

DNV

DNV

DNV

DNV

DNV

DNV

DNV

DNV

DNV

DNV

DNV

DNV

DNV

DNV

DNV

DNV

DNV

DNV

DNV

DNV

DNV

DNV

DNV

DNV

DNV

DNV

DNV

DNV

DNV

DNV

DNV

DNV

DNV

DNV

DNV

DNV

DNV

DNV

DNV

DNV

DNV

DNV

DNV

DNV

DNV

DNV

DNV

DNV

DNV

DNV

DNV

DNV

DNV

DNV

DNV

DNV

DNV

DNV

DNV

DNV

DNV

DNV

DNV

DNV

DNV

DNV

DNV

DNV

DNV

DNV

DNV

DNV

DNV

DNV

DNV

DNV

DNV

DNV

DNV

DNV

DNV

DNV

DNV

DNV

DNV

DNV

DNV

DNV

DNV

DNV

DNV

DNV

DNV

DNV

DNV

DNV

DNV

DNV

DNV

DNV

DNV

DNV

DNV

DNV

DNV

DNV

DNV

DNV

DNV

DNV

DNV

DNV

DNV

DNV

DNV

DNV

DNV

DNV

DNV

DNV

DNV

DNV

DNV

DNV

DNV

DNV

DNV

DNV

DNV

DNV

DNV

DNV

DNV

DNV

DNV

DNV

DNV

DNV

DNV

DNV

DNV

DNV

DNV

DNV

DNV

DNV

DNV

DNV

DNV

DNV

DNV

DNV

DNV

DNV

DNV

DNV

DNV

DNV

DNV

DNV

DNV

DNV

DNV

DNV

DNV

DNV

DNV

DNV

DNV

DNV

DNV

DNV

DNV

DNV

DNV

DNV

DNV

DNV

DNV

DNV

DNV

DNV

DNV

DNV

DNV

DNV

DNV

DNV

DNV

DNV

DNV

DNV

DNV

DNV

DNV

DNV

DNV

DNV

DNV

DNV

DNV

DNV

DNV

DNV

DNV

DNV

DNV

DNV

DNV

DNV

DNV

DNV

DNV

DNV

DNV

DNV

DNV

DNV

DNV

DNV

DNV

DNV

DNV

DNV

DNV

DNV

DNV

DNV

DNV

DNV

DNV

DNV

DNV

DNV

DNV

DNV

DNV

DNV

DNV

DNV

DNV

DNV

DNV

DNV

DNV

DNV

DNV

DNV

DNV

DNV

DN



MITCH COX
REALTOR, INC.

2304 Silverdale Drive, Suite 200, Johnson City, TN 37601
423-282-6582 (o) 423-282-5903 (f) www.mitchcox.com