

SOUTHWEST MEDICAL PLAZA II

5801 Oakbend Trail
Fort Worth, TX 76132

Outpatient Medical For Lease

4,319 - 12,250 SF



Medical Leasing:
214.461.2383

Peter Shaw
214.461.2302
PShaw@lpc.com

Douglas Maclay
214.461.2371
dmaclay@lpc.com

Elizabeth Madden
214.461.2366
emadden@lpc.com

Banks Newton
214.461.2388
bnewton@lpc.com

Lincoln

Lincoln Property Company
8140 Walnut Hill Lane Suite 700
Dallas, TX 75231

www.lpc.com

SOUTHWEST MEDICAL PLAZA II

Outpatient Medical For Lease

5801 Oakbend Trail | Fort Worth, TX 76132



Property Overview

This off-campus Outpatient Medical Building is ideally positioned along the Chisholm Trail growth corridor. Residing minutes away from Texas Health Harris Methodist Southwest Hospital, TCU, and the Fort Worth Medical District, Southwest Medical Plaza II offers convenience for patients and staff.

Property Highlights

- Immediate access to the Chisholm Trail tollway and southwest Fort Worth growth corridor
- Convenient access to Texas Health Harris Methodist Southwest Hospital, Fort Worth Medical District, and TCU
- No Use Restrictions
- Free Parking for Patients & Staff
- Adjacent to Baylor Scott & White Surgicare

Availabilities	SF
140	6,170 SF
150	4,319 SF

Peter Shaw

214.461.2302
PShaw@lpc.com

Douglas Maclay

214.461.2371
dmaclay@lpc.com

Elizabeth Madden

214.461.2366
emadden@lpc.com

Banks Newton

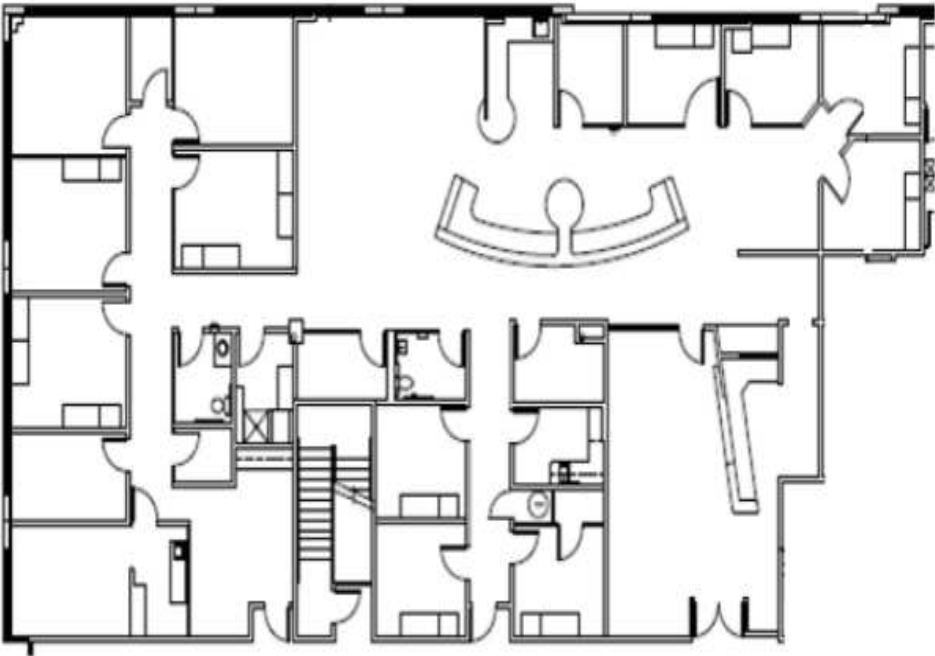
214.461.2388
bnewton@lpc.com

Lincoln

SOUTHWEST MEDICAL PLAZA II

Suite 140

5801 Oakbend Trail | Fort Worth, TX 76132



Suite	Size
140	6,170 SF

Peter Shaw

214.461.2302
PShaw@lpc.com

Douglas Maclay

214.461.2371
dmaclay@lpc.com

Elizabeth Madden

214.461.2366
emadden@lpc.com

Banks Newton

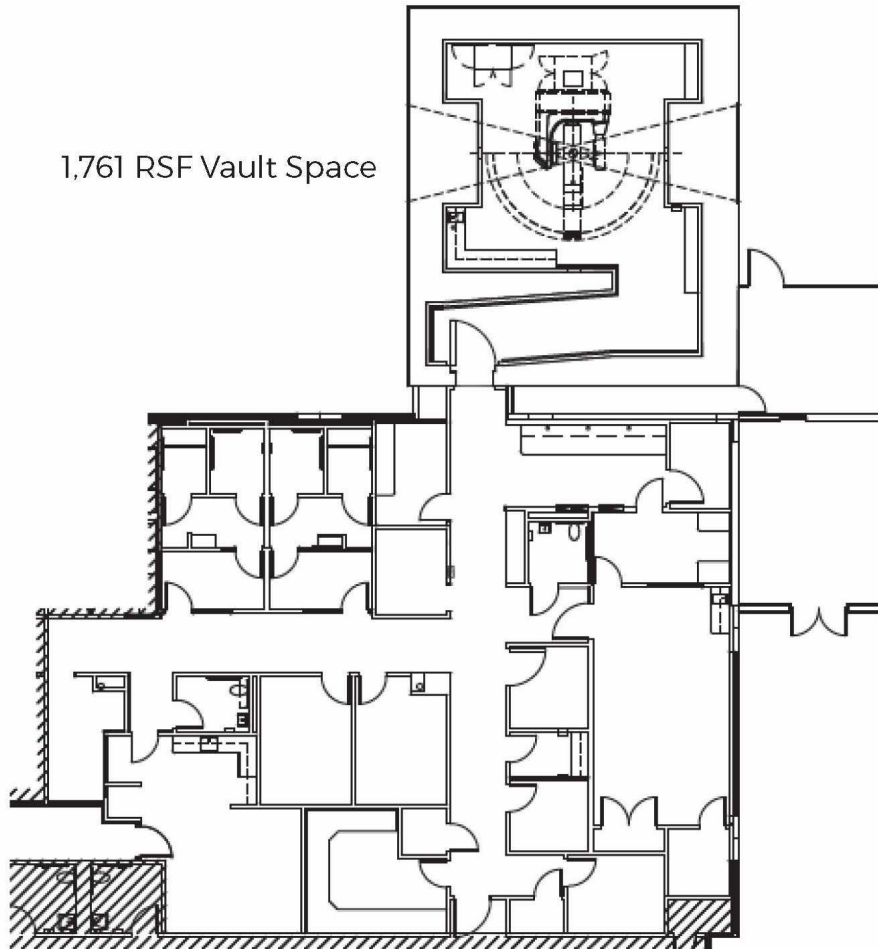
214.461.2388
bnewton@lpc.com

Lincoln

SOUTHWEST MEDICAL PLAZA II

Suite 150

5801 Oakbend Trail | Fort Worth, TX 76132



Suite

Size

150

4,319 SF

Peter Shaw

214.461.2302
PShaw@lpc.com

Douglas Maclay

214.461.2371
dmaclay@lpc.com

Elizabeth Madden

214.461.2366
emadden@lpc.com

Banks Newton

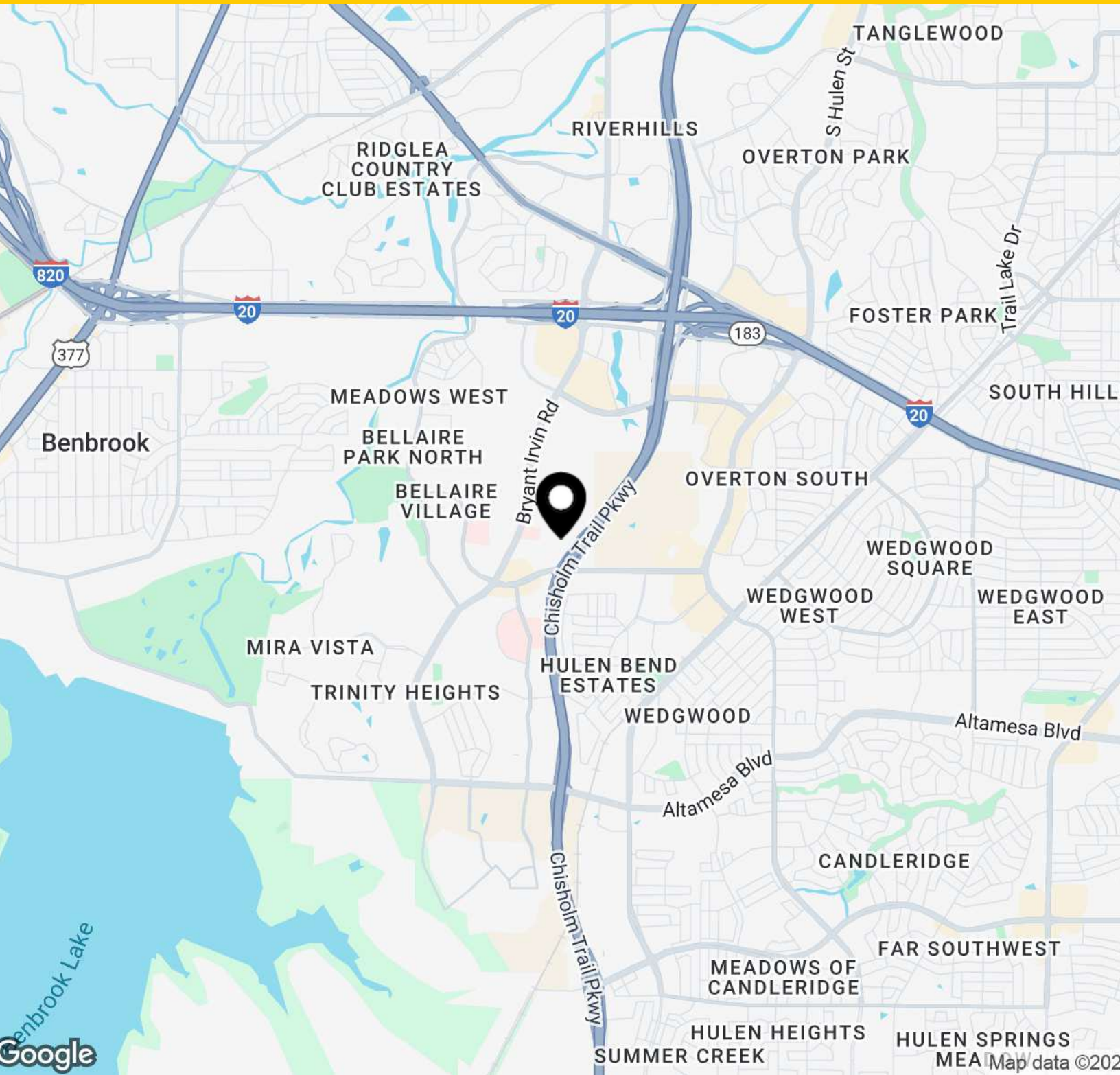
214.461.2388
bnewton@lpc.com

Lincoln

SOUTHWEST MEDICAL PLAZA II

Location Map

5801 Oakbend Trail | Fort Worth, TX 76132



Peter Shaw

214.461.2302
PShaw@lpc.com

Douglas Maclay

214.461.2371
dmaclay@lpc.com

Elizabeth Madden

214.461.2366
emadden@lpc.com

Banks Newton

214.461.2388
bnewton@lpc.com

Lincoln



SOUTHWEST MEDICAL PLAZA II

Healthpeak® | DOC
LISTED
NYSE

5801 Oakbend Trail
Fort Worth, TX 76132

Leasing Information:
214.461.2383

Peter Shaw
214.461.2302
PShaw@lpc.com

Douglas Maclay
214.461.2371
dmaclay@lpc.com

Elizabeth Madden
214.461.2366
emadden@lpc.com

Banks Newton
214.461.2388
bnewton@lpc.com

Lincoln

Lincoln Property Company
8140 Walnut Hill Lane Suite 700
Dallas, TX 75231

www.lpc.com