

6,350 SF - 12,700 SF AVAILABLE

PRIME WAREHOUSE & OFFICE SPACE
FUNCTIONAL. FLEXIBLE. MOVE-IN READY

12301

NW 112TH AVENUE, MEDLEY, FL 33178



BUTTERS
REALTY
&
MANAGEMENT

Butters Realty & Management
6820 Lyons Technology Circle #100
Coconut Creek | FL. 33073 | www.Butters.com

For more information contact:

Virginia Calcaño
Senior Associate
M: 954.588.9033
VCalcano@butters.com

Brian T. Ahearn, CCIM
Senior Vice President
M: 954.937.4540
BAhearn@butters.com

JC Conte - SIOR
Executive Vice President
M: 305.901.6033
JCConte@butters.com

No warranty or representation is made to the accuracy of the foregoing information.
Terms or sale or lease or availability are subject to change or withdrawal without notice.

Every once in a while, a property checks all the boxes — location, flexibility, and move-in readiness. That's what makes MPVS in Medley stand out.

Right off the Turnpike, this park offers 6,350 SF and 12,700 SF available now, plus a 25,400 SF space coming early 2026. Each unit features a built-out office, mezzanine, and restrooms — everything a growing business needs.

Total size: 12,700 SF (two combined units of 6,350 SF each)

Total Office size: 1,750 SF (two separate offices of 875 SF each)

Concrete Mezzanine: Two separate mezzanines of 875 SF

Ceiling height: 24'

Docks: 4 docks high doors (10'x9')

Truck Court: 120' non shared truck court

Parking: 1/1,000 SF

Lease rate: \$19 PSF Gross

Total Restrooms: 4

Electric: 3 phase electric available

Alarm system installed

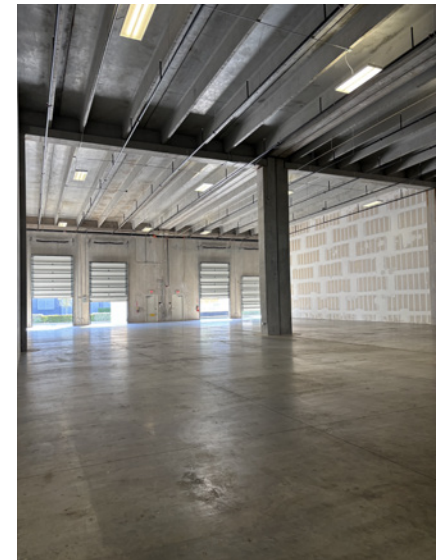
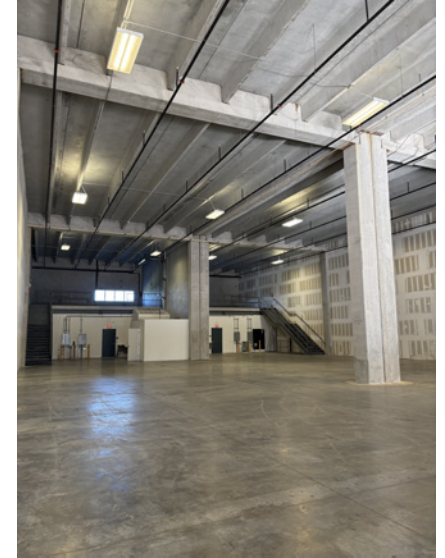
Zoning: M1 (Light Manufacturing)

Year built: 2020

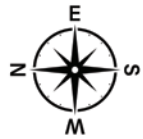
Minimum term: 3 years



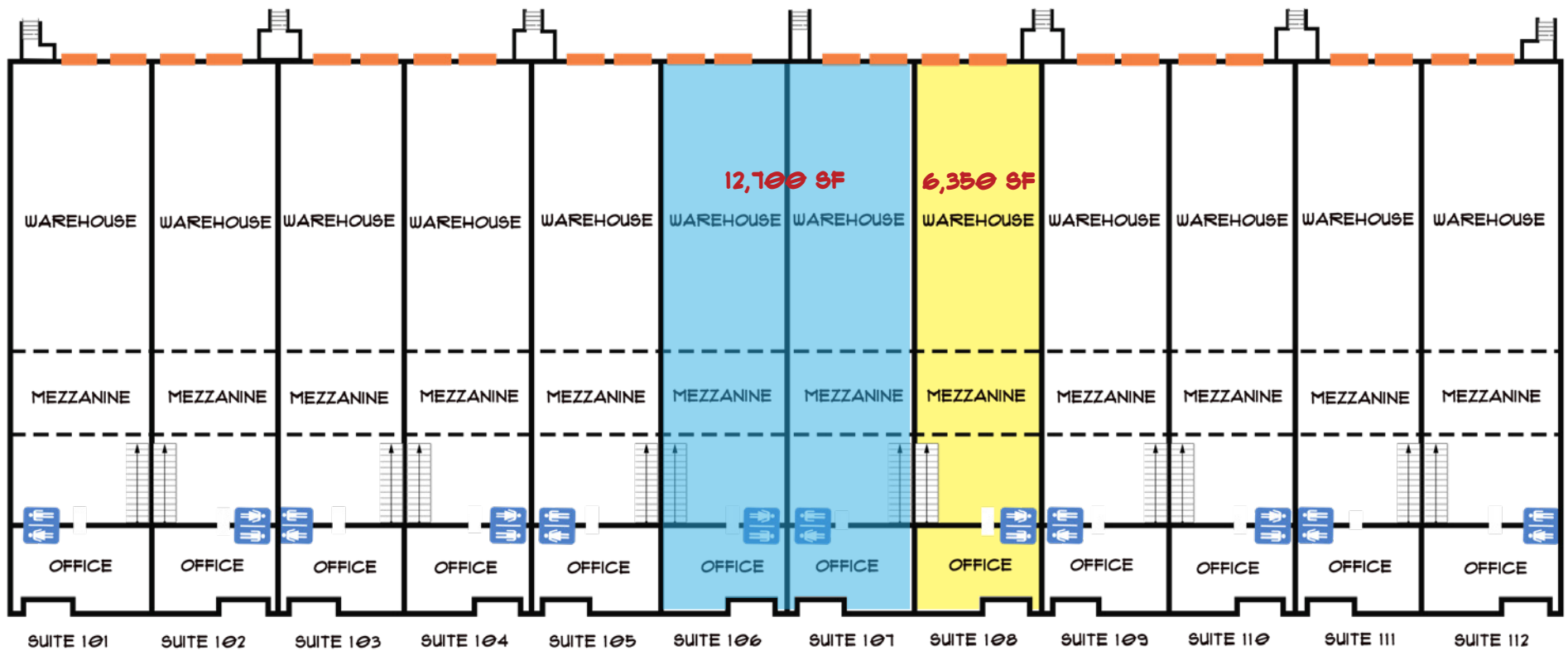
INTERIOR GALLERY



AVAILABLE SUITES



- 12,700 SF (TWO CONTINGENT UNITS OF 6,350 SF EACH)
- 6,350 SF



Situated within the Pan American North Business Park, the property offers excellent connectivity:

Proximity to Major Highways:

- » 0.1 miles from Florida Turnpike
- » 5 miles to SR-826 (Palmetto Expressway)
- » Approximately 12 miles to SR-836 (Dolphin Expressway)

Distance to Airports:

- » Approximately 10 miles to Miami International Airport
- » Approximately 25 miles to Fort Lauderdale-Hollywood International Airport

