

FOR LEASE

Phoenix Office Space

11747 NORTH 19TH AVENUE, PHOENIX, AZ 85029



PROPERTY HIGHLIGHTS

- ±600 SF and ±1,100 SF of space available
- Abundant parking
- Monument and building signage
- Excellent visibility on 19th Avenue
- Busy daytime traffic with high traffic counts; ±31,627 vehicles per day on 19th Avenue
- Easy access to I-17 and surrounding areas

LEASE RATE

Please Inquire

DEMOGRAPHICS 1 MILE 3 MILES 5 MILES

Population Est.	20,134	172,938	432,362
Avg. HH Income	\$41,433	\$57,691	\$65,932
No. of HH	6,852	67,153	167,875
Total Employees	13,789	52,575	129,203
Total Businesses	839	5,182	13,086

Source: CoStar 2019

TRAFFIC COUNT

31,627 vehicles per day along 19th Avenue

20,977 vehicles per day along Peoria Avenue

JACK STEIN

Patriot Commercial Properties

Principal | Designated Broker

602 508 0055

jack@patriotcommercialproperties.com

PATRIOT
COMMERCIAL PROPERTIES

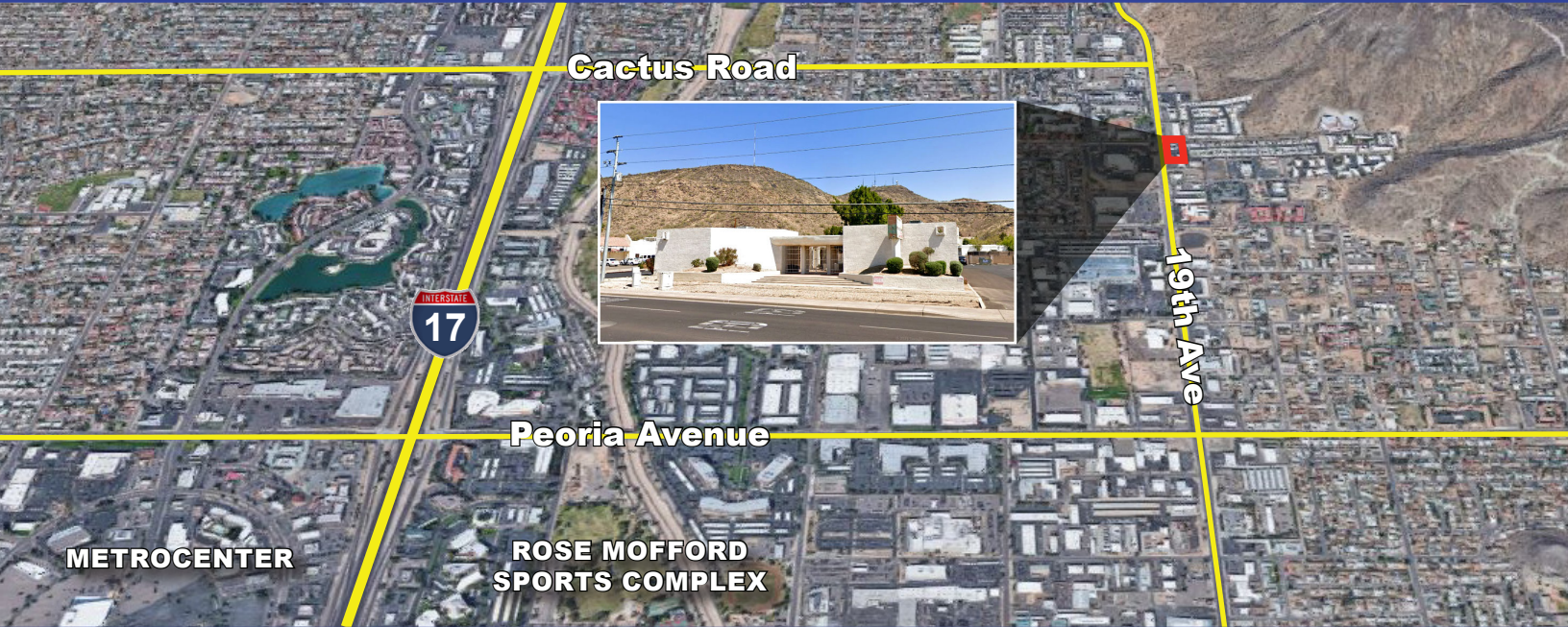
2833 N. 48th Street, Phoenix, AZ 85008

www.patriotcommercialproperties.com

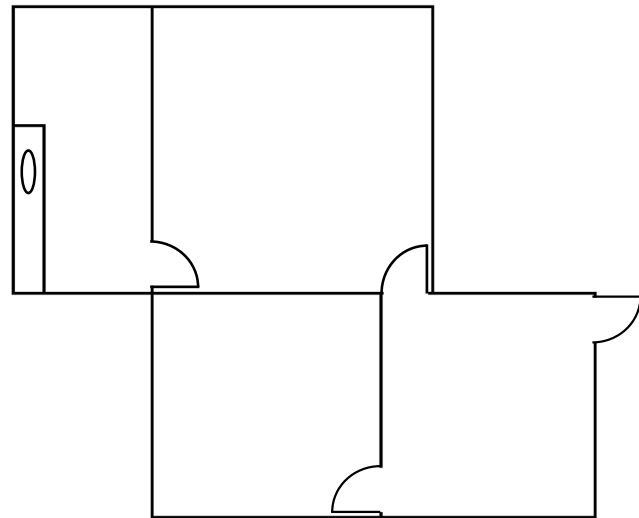
FOR LEASE

Phoenix Office Space

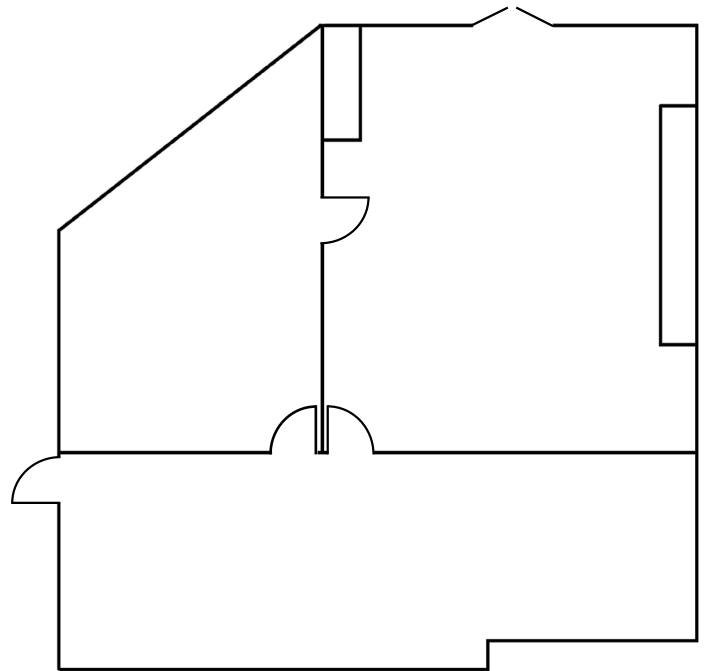
11747 NORTH 19TH AVENUE, PHOENIX, AZ 85029



FLOOR PLAN ±600 SF OFFICE



FLOOR PLAN ±1,100 SF OFFICE



JACK STEIN

Patriot Commercial Properties

Principal | Designated Broker

602 508 0055

jack@patriotcommercialproperties.com

PATRIOT
COMMERCIAL PROPERTIES

2833 N. 48th Street, Phoenix, AZ 85008

www.patriotcommercialproperties.com

Information contained herein was obtained from sources believed to be reliable, however Patriot Commercial Properties, LLC, makes no guarantees, warranties, or representations as to the accuracy or completeness thereof. The presentation of this property is submitted subject to errors, omissions, change of price or conditions prior to sale or lease, or withdrawal without notice.