



31-59

STEINWAY STREET
ASTORIA, QUEENS

2,597 SF STOREFRONT + BSMT | HIGH DENSITY NATIONAL TENANT CORRIDOR

31-59 Steinway Street

Centrally located, steps off Broadway

Available

Ground 2,597 sf - 12'-0" Ceiling Height
Basement 2,480 sf - 8'-6" Ceiling Height
Total: 5,077sf

Frontage: 31.5' ft. along Steinway St.
Possession: Immediate
Rent: Upon Request

Comments

- Freestanding branding opportunity
- Ideal for QSR, urgent care, dental, or general retail - currently Fabco Shoes
- Accessible via the **M** **R** subway lines
- National tenant block including FedEx Office & Print, GAP Factory, Banana Republic Factory, Old Navy (coming soon), J.D. Sports, The Vitamin Shoppe, CityMD, Bath & Body Works, German Doner Kebab, McDonald's, The Children's Place, Chase Bank, CVS Pharmacy, Starbucks, Chipotle, The Dermatology Specialists, T-Mobile, Verizon
- Area tenants Broadway Wine & Liquor, Tropical Smoothie Café, Steinway Pizza, Astoria Pets, Better Body Bootcamp, Zales, Las Margaritas, Cronin & Phelan's, Snipes, Foot Locker . . . to name a few

By the Numbers

Retail Businesses

789

1 Mile Radius

Households

66,075

2023 est. - 1 Mile Radius

Household Income

\$104,932

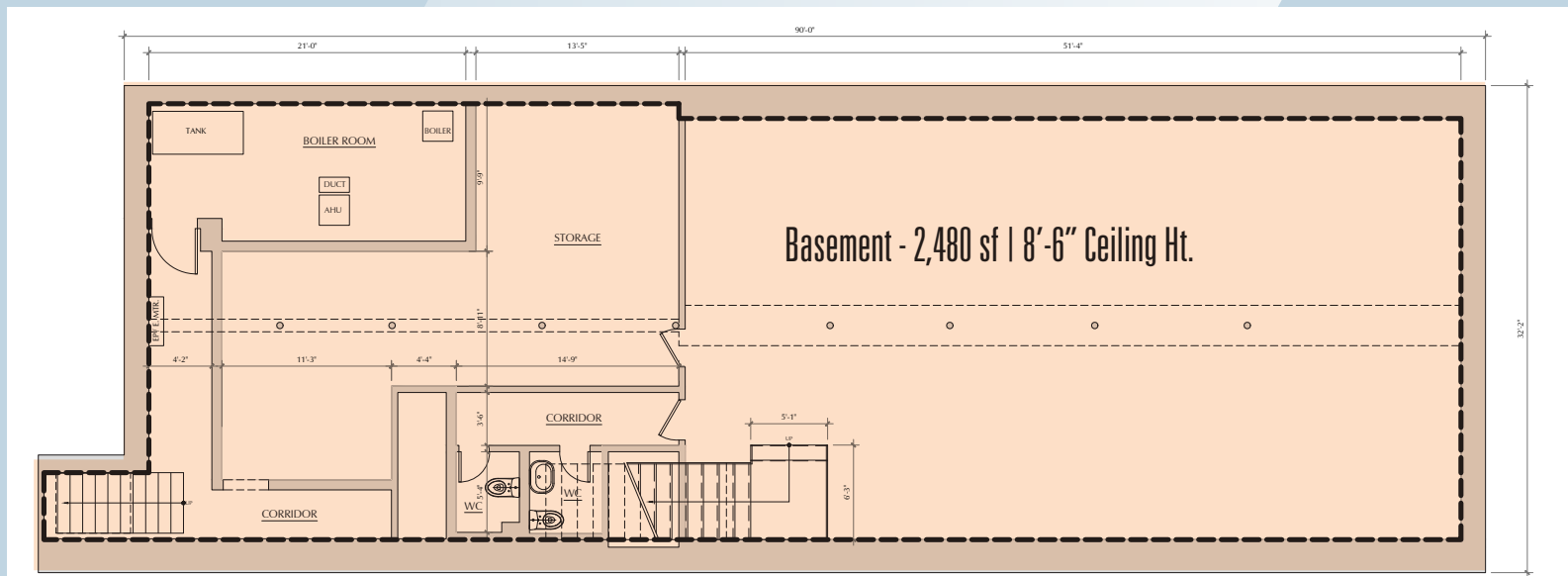
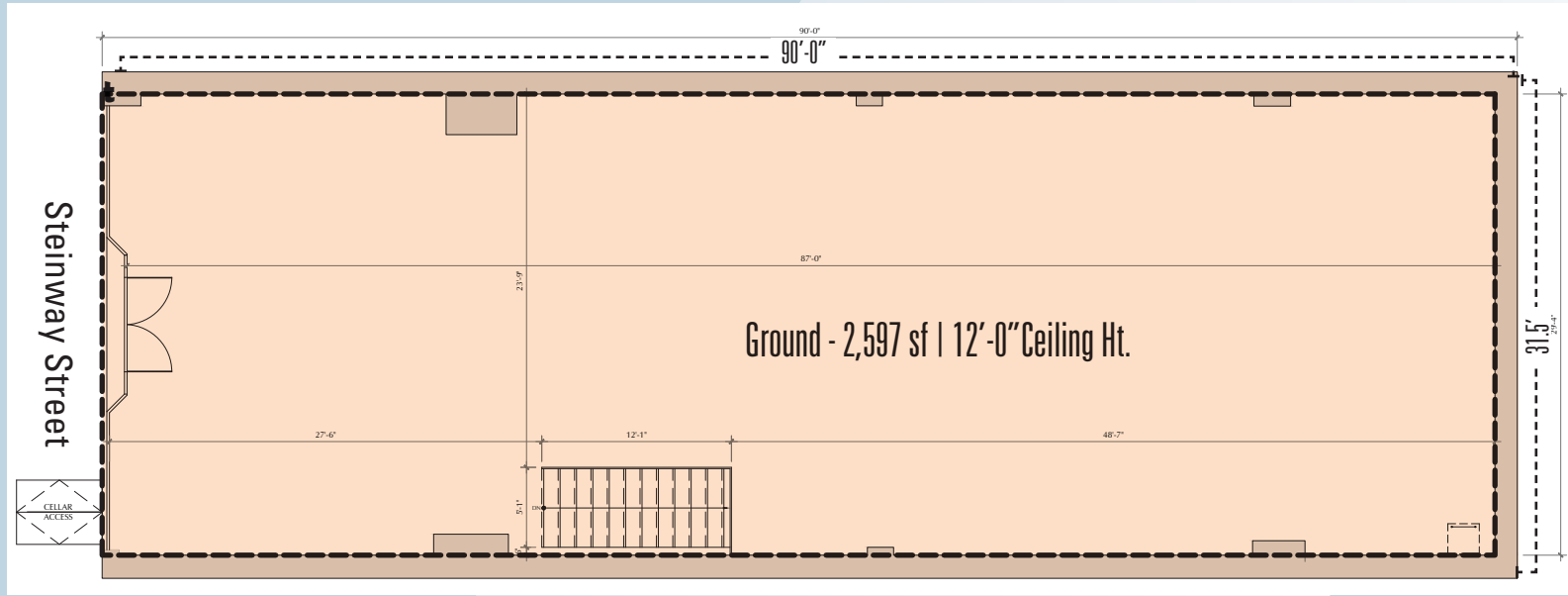
2023 Average

Subway Ridership

2,730,057

2023 Annual - Steinway Street Station

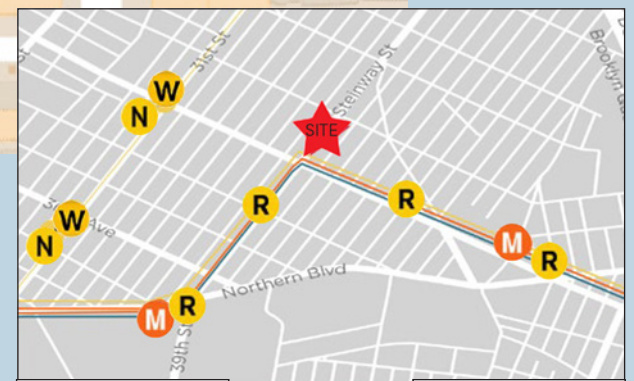
Floor Plan - 5,077 sf total



Area National Tenants



- | | | | |
|-------------------------------|------------------------------------|---------------------------------|------------------------------------|
| 1. GAP Factory | 8. German Doner Kebab | 15. CVS | 22. ZALES |
| 2. Popeye's Louisiana Kitchen | 9. McDonald's | 16. Starbucks | 23. Tiger Schulmann's Martial Arts |
| 3. FedEx Office & Print | 10. The Children's Place | 17. The Dermatology Specialists | 24. Nios Skin Lab |
| 4. Verizon | 11. SITE: 31-59 Steinway St | 18. T-Mobile | 25. Old Navy (coming soon) |
| 5. The Vitamin Shoppe | 12. Chipotle Mexican Grill | 19. Diamond Braces | 26. JD Sports |
| 6. CityMD | 13. Chase Bank | 20. Bank of America | |
| 7. Bath & Body Works | 14. TD Bank | 21. Banana Republic Factory | |



Annual Ridership
2,763,230
N W
2023

Annual Ridership
2,730,057
M R
2023



For further information and/or inspection contact:

Mark Tergesen

Licensed Assoc. Real Estate Broker
212.400.9528
mt@absre.com

Howard I. Gilbert

Licensed Assoc. Real Estate Broker
212.400.9492
hgilbert@absre.com

ABS Partners Real Estate • 200 Park Avenue South, 10th Floor, New York, NY 10003 • 212.400.6060 • www.absre.com