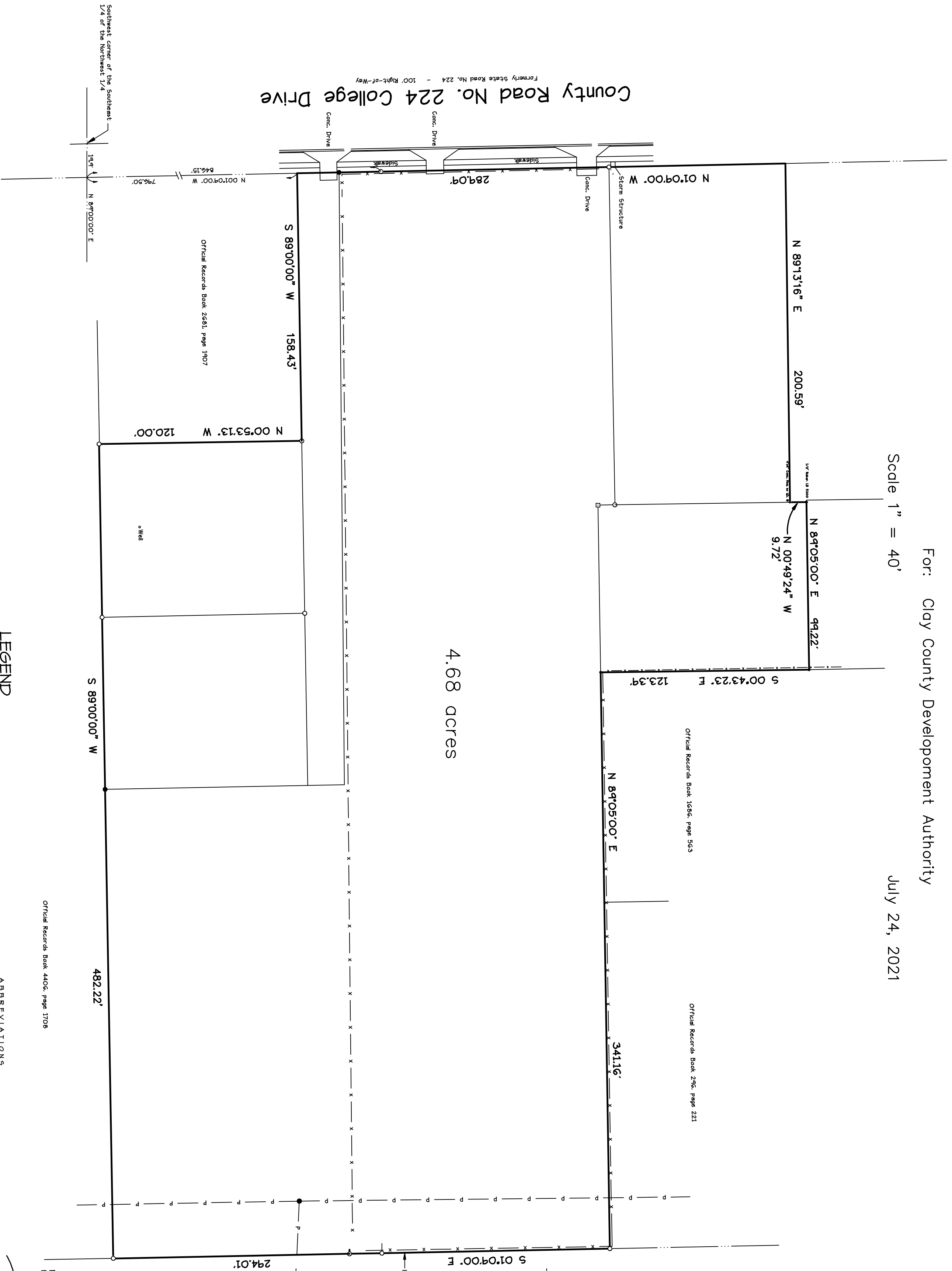


Several parcels of land situated in the Southeast 1/4 of the Northwest 1/4 of Section 35, Township 4 South, Range 25 East, Clay County, Florida.

For: Clay County Development Authority

Scale 1" = 40'

July 24, 2021



4.68 acres

GENERAL NOTES

1. Bearings shown hereon are based on the record bearing of N 01°04'00" W for the east right-of-way line County Road No. 224.
2. This map represents a compilation of surveys for Clay County Development Authority and does not represent an actual survey of the compiled parcel.

LEGEND

- Found 4"x4" Concrete Monument
- Found Iron Pipe (no I.D. #)
- Set 1/2" Iron Pipe (LB 1351)
- Fence
- Powerline/Pole and Anchor
- Telephone Line
- Cable TV Line
- Concrete Air Conditioner Pad
- Concrete Elec. Transformer Pad

ABBREVIATIONS

- AC Air Conditioner
- ET Electric Transformer
- ET Electric Transformer
- IP Iron Pipe

Harold T. Eiland
License No. LS 2518

Harold T. Eiland

Eiland & Associates, Inc.
Professional Surveyors & Mappers
Certificate of Authorization No. LB 1351
615 Blanding Boulevard
Orange Park, Florida 32073
Telephone 904-272-1000

Not valid without the signature and the original raised seal of a Florida licensed surveyor and mapper.