

110 Miller Road

Ann Arbor, MI 48104

7,500 SF Available | \$32.00/SF Modified Gross



Property Highlights

- + Class A office finishes
- + On-site Parking
- + Asking rate is \$32.00 Modified Gross
- + Building Signage
- + Adjacent to City of Ann Arbor Public Parking
- + Available Immediately
- + Furniture Available

110 Miller Ave

Ann Arbor, MI

For Lease

Property Information

7,500

Available Square Footage

38,000

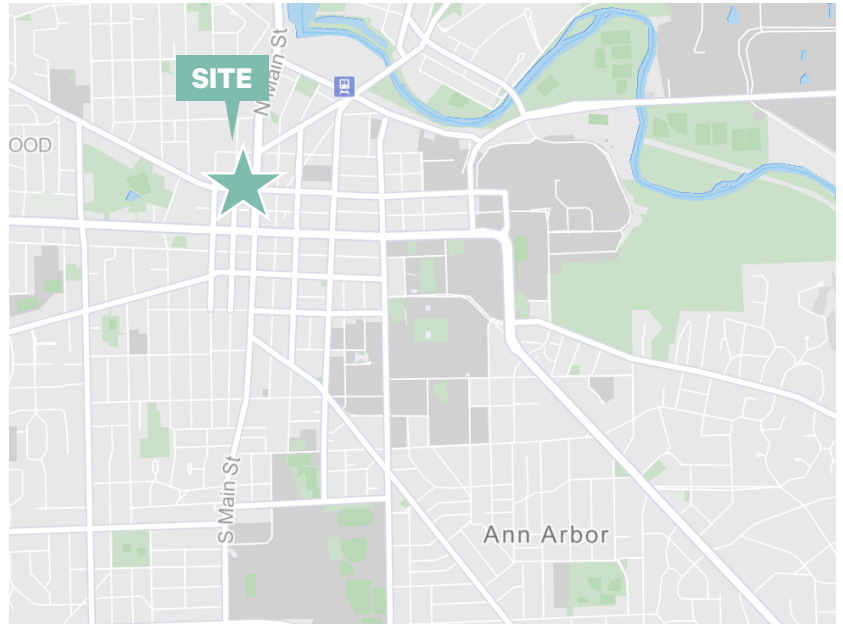
Building Square Footage

\$32.00/SF

Sublease Rate

DEMOGRAPHICS WITHIN A 5 MILE RADIUS

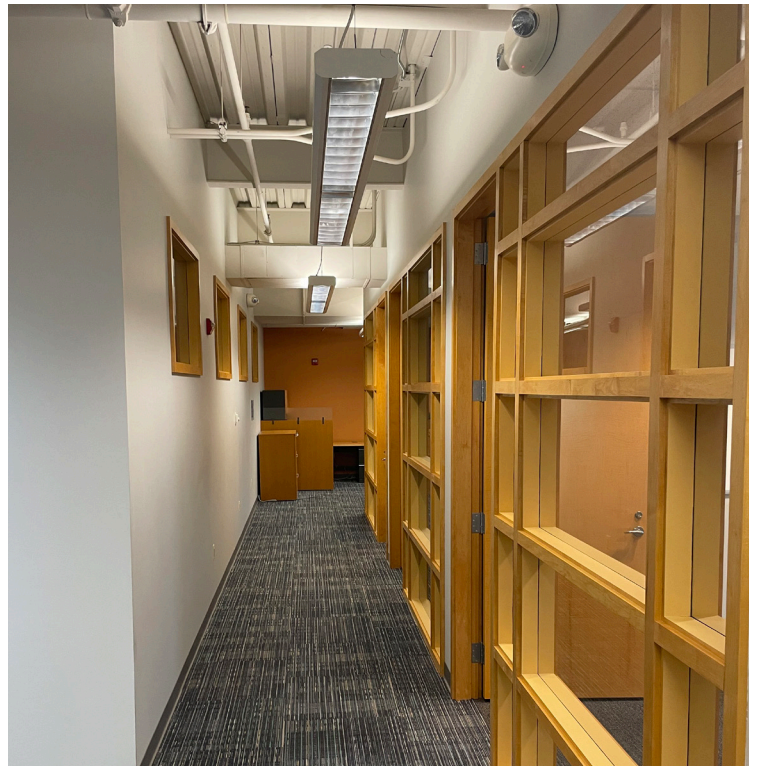
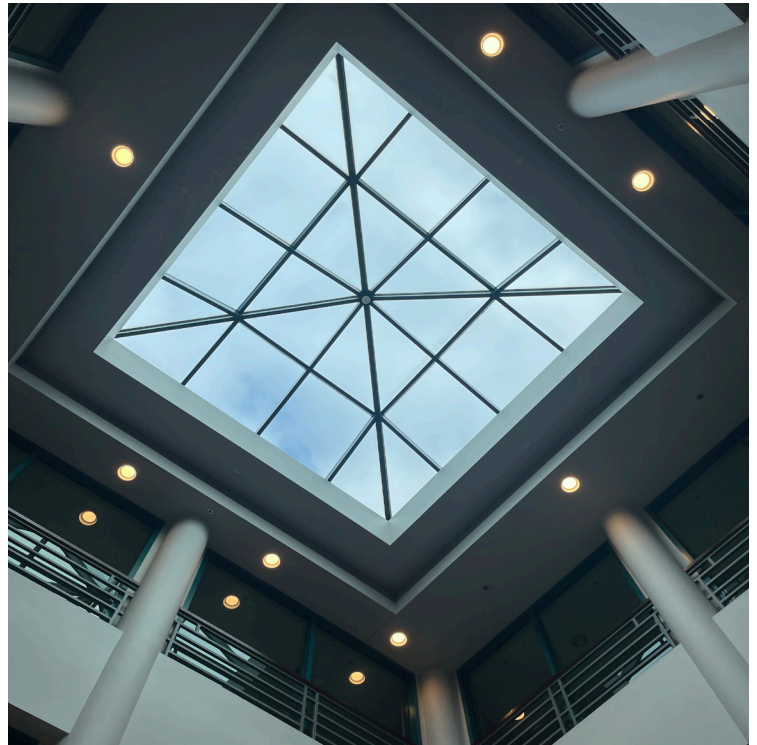
POPULATION	160,072
BUSINESSES	7,173
EMPLOYEES	167,159
HOUSEHOLDS	65,782
AVERAGE HH INCOME	\$128,538
PER CAPITA INCOME	\$55,355



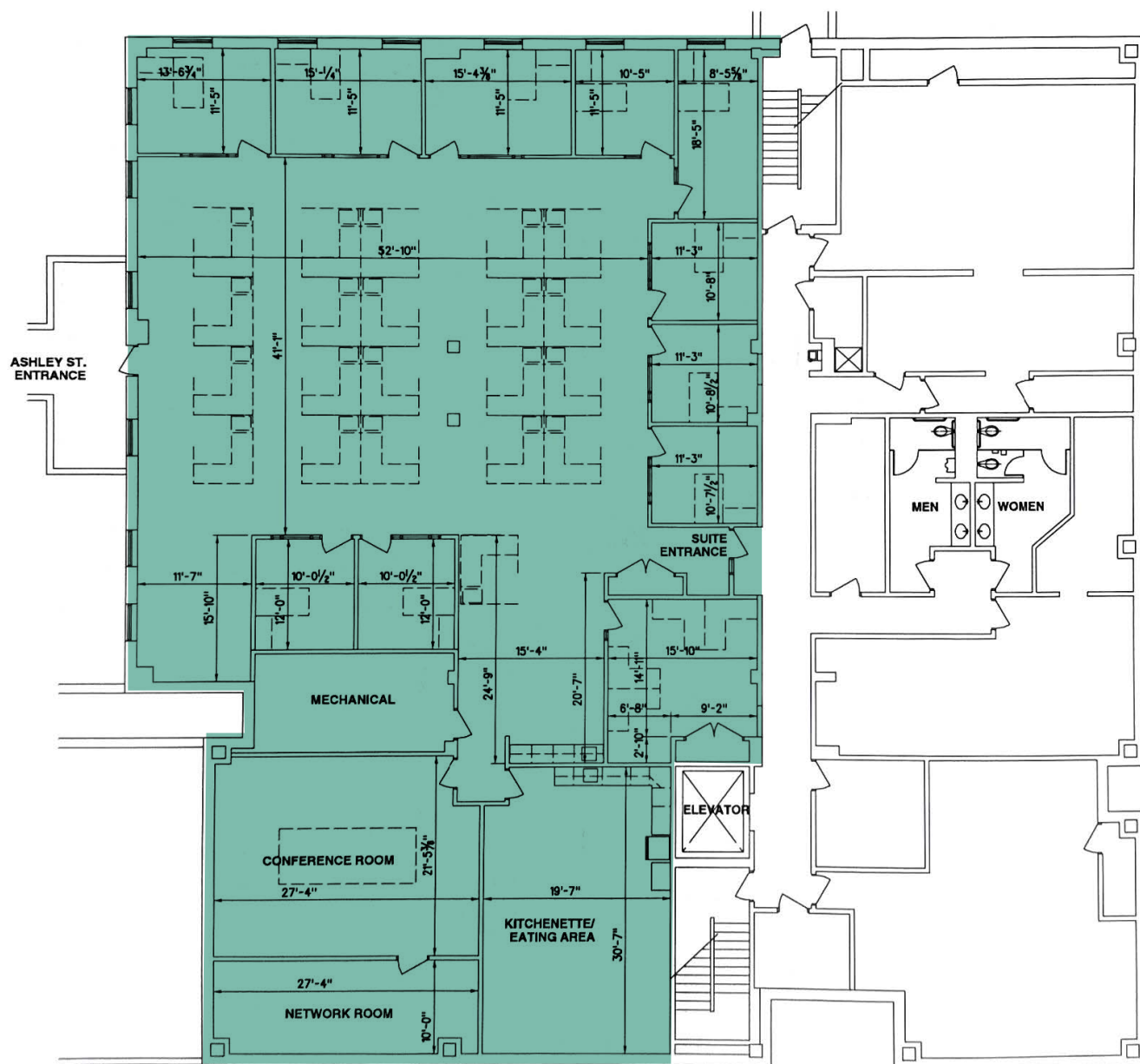
110 Miller Ave
Ann Arbor, MI

For Lease

Property Photos



Garden Level Floor Plan



Contact Us

Tim Guest

Vice President

+1 248 408 7838

tim.guest@cbre.com